

For Lease

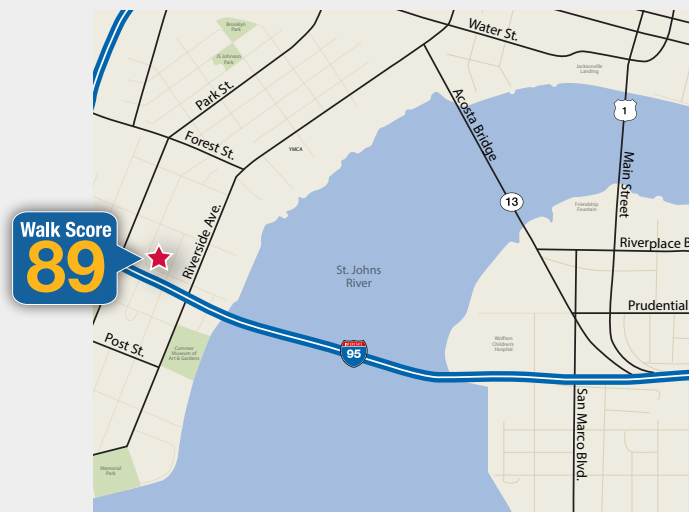
±7,000 SF
Office Building Available



The Peninsular Building

725 Peninsular Place
Jacksonville, FL 32204

- Located on half an acre of land in the Central Business District
- Excellent visibility from I-95 (150,000 ADT)
- Proximity to Unity Plaza (planned opening November 2014)
- Convenient access to I-95/I-10 interchange
- Ample parking
- Fiber optic hub available
- Solid construction with open floor plan
- Can be built out to tenant's needs



For more information:

Bryan J. Mickler

+1 904 363 9002 • bjm@naihallmarkpartners.com

Megan Vershava

+1 904 404 4458 • mv@naihallmarkpartners.com

NO WARRANTY OR REPRESENTATION, EXPRESS OR IMPLIED, IS MADE AS TO THE ACCURACY OF THE INFORMATION CONTAINED HEREIN, AND THE SAME IS SUBMITTED SUBJECT TO ERRORS, OMISSIONS, CHANGE OF PRICE, RENTAL OR OTHER CONDITIONS, PRIOR SALE, LEASE OR FINANCING, OR WITHDRAWAL WITHOUT NOTICE, AND OF ANY SPECIAL LISTING CONDITIONS IMPOSED BY OUR PRINCIPALS NO WARRANTIES OR REPRESENTATIONS ARE MADE AS TO THE CONDITION OF THE PROPERTY OR ANY HAZARDS CONTAINED THEREIN ARE ANY TO BE IMPLIED.

6675 Corporate Center Parkway, Suite 100
Jacksonville FL 32216

tel 904 363 9002 • fax 904 363 0098

www.naihallmarkpartners.com

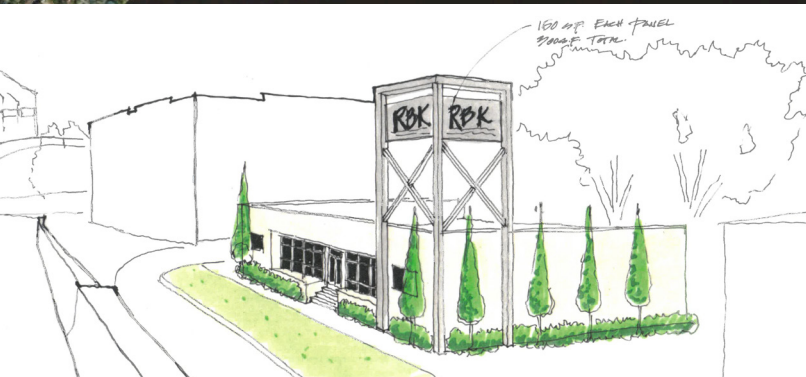
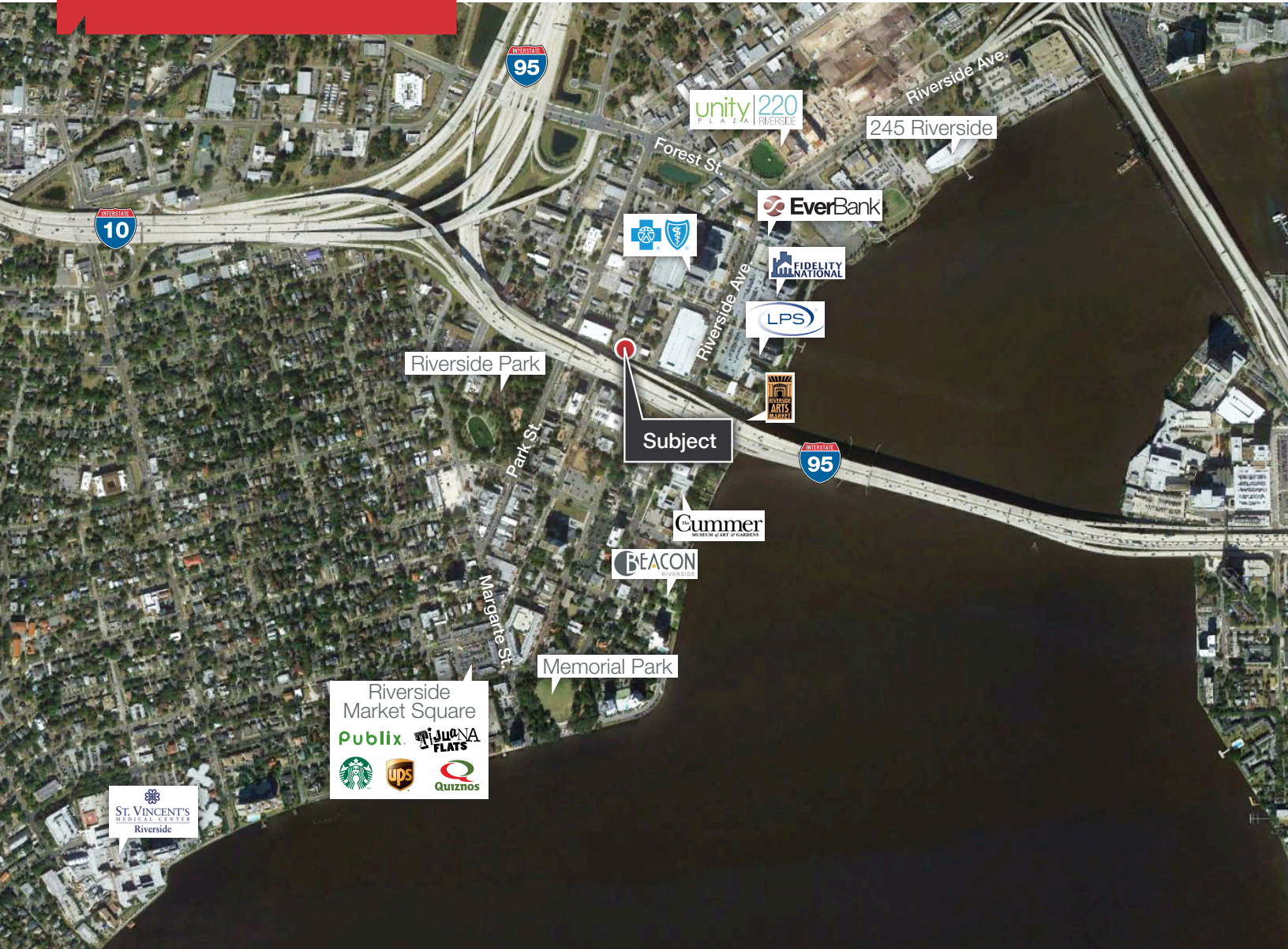
For Lease

±7,000 SF

Office Building Available

The Peninsular Building

725 Peninsular Place • Jacksonville, FL 32204



For more information:

Bryan J. Mickler

+1 904 363 9002 • bjm@naihallmarkpartners.com

Megan Vershave

+1 904 404 4458 • mv@naihallmarkpartners.com

NAI Hallmark Partners
Commercial Real Estate Services, Worldwide.

6675 Corporate Center Parkway, Suite 100
Jacksonville FL 32216
tel 904 363 9002 • fax 904 363 0098
www.naihallmarkpartners.com