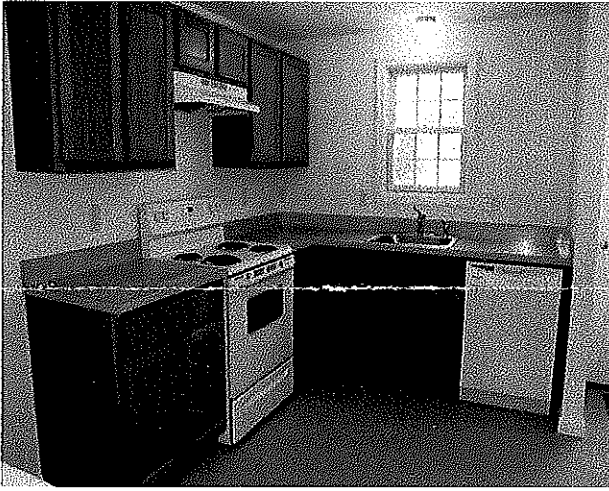


# Rental Lottery-6 Dory Lane-Brackett Landing Eastham, MA New 1-Bedroom Unit



Brand New 1-bedroom Unit. Full Basement, Washer/Dryer Hook-up. Large living area, one-car garage, over 800 square feet, dishwasher, free standing unit, convenient to local businesses.



## **APPLICANTS MUST:**

HAVE HOUSEHOLD INCOME AT OR BELOW 80% AMI

1 Person= \$44,750--2 Person=\$51,150--3 Person=\$57,550

MONTHLY RENT-\$767 (utilities not included)

A lottery to determine the order in which eligible applications are reviewed, will be held at the CDP conference room at 3 Main Street Mercantile, unit 8, Eastham, MA on Wednesday, July 30th, 2014 at 10 am.

Applicants need not attend.

You can contact us at 508-240-7873, ext 17 or send an email to [housinglottery@capecdp.org](mailto:housinglottery@capecdp.org) for more information

**The application deadline is JULY 1<sup>ST</sup>, 2014-3:00 PM**

Forward to a friend

## **APPLICATIONS AVAILABLE AT:**

Community Development Partnership  
[www.capecdp.org](http://www.capecdp.org)

Eastham Town Hall

Eastham Public Library

### **Brackett Landing Information Sessions**

**Wednesday, June 4<sup>th</sup>, 2014: 5:00-6:00 PM**

**AND**

**Saturday, June 14<sup>th</sup>, 2014: 10:00-11:00 AM**

We will discuss the application process, the rental rates and income and asset verification.

Location: CDP Conference Room, 3 Main Street  
Mercantile, Unit 8, Eastham, MA 02642

(across from the Fairway Restaurant)