



PP&D BROCHURE DISTRIBUTION



PP&D was founded in 1982 and is still locally owned. We distribute to nineteen routes in Vermont, New York and New Hampshire.

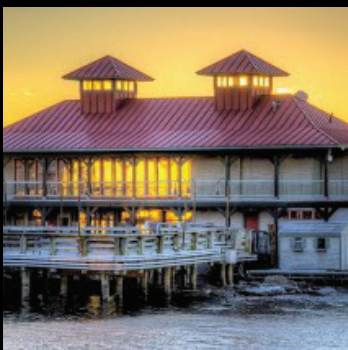
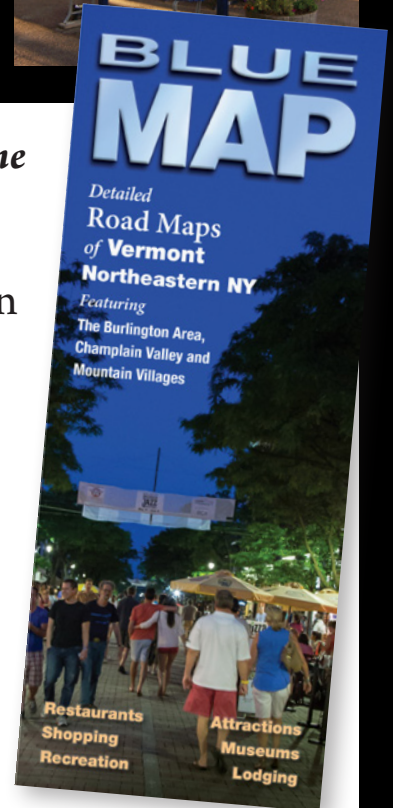


- Now offering 37 high traffic locations to choose from
 - Great package deals
 - Lots of extra perks
- See details inside...*

Get your copy of the **BLUE MAP!**

- **More Distribution**
six new regions, hundreds of locations added!
- **Bigger**, easier to read maps!
- **Bolder** business names on the map!
- **Better** listing organization!

See details inside...



2015 BLUE MAP

Being owned by a distribution company has big advantages. We have already doubled distribution locations to 400. **Twice as many as any other local map!!**

Distribution regions for the new BLUE MAP include:

- **Greater Burlington** – Over 200 Motels, Hotels, Inns, Restaurants, Shops, Attractions and Dozens of Supermarkets, Heath Clubs, Libraries, Retail and Dining Locations
- **Stowe and Waterbury Center** – Over 70 Hotels, Motels, Inns, Restaurants, Shops and Attractions
- **Mad River Valley, Waitsfield and Waterbury** - Over 70 Motels, Inns, Restaurants, Shops and Attractions
- **Grand Isle and St. Albans** -Over 40 Motels, Inns, Restaurants, Shops and Attractions
- **Smugglers Notch, Morrisville and Johnson** - Over 40 Hotels, Motels, Inns, Restaurants, Shops and Attractions
- **Montpelier and Barre** – Over 50 Hotels, Motels, Inns, Restaurants, Shops and Attractions
- **Middlebury and Vergennes** - Over 30 Hotels, Motels, Inns, Restaurants, Shops and Attractions
- **Plattsburgh** – Over 45 Hotels, Motels, Inns, Restaurants, Shops and Attractions
- **On 12 Lake Champlain Ferry Boats and 6 Ferry Docks** with almost a Million passengers!
- We will also be providing the BLUE MAP to hundreds of people, before they get to Vermont. It will be sent to recruiters, conference and convention planners, weddings and realtors!

Circulation – 220,000 maps to 400 locations (twice as many as any other local map)

Listings: (all listings include your business name on the map)

- 8 Line Ad with Color Logo \$580
- 11 Line Ad with Color Photo or Logo \$680

Display Ad, Including an 11 Line Listing

3³/₈" wide x 4¹/₂" high - Full Color, Inside \$ 2,100

3³/₈" wide x 4¹/₂" high - Full Color, Back Cover (only two available) \$ 2,900

3³/₈" wide x 9" high – Full Color, Full Back Cover (only one available) \$5,200

"We use the BLUE MAP literally every day as our primary go to information source to help our guests get oriented to Burlington, plus all the points of interest and shopping in and around the city. Having the Inn on the map gives our guests confidence that they can venture forth and then easily find their way back."

— Thanks from the **Davis family of Innkeepers.**

"Assisting visitors at our information booth every day, I find the BLUE MAP the most valuable tool I have. All the information that visitors need is right there for them in one easy to use map ... you can't beat it!"

— **George Commo, Church Street Marketplace Information Kiosk Director**

"The BLUE MAP is hands down an outstanding map/guide. Its listings are valued because they are comprehensive and include plenty of quality, unique Vermont based businesses. I know it's the sort of publication that people keep because we seldom find them trashed."

— **Cindy Roberts, Director, Brochure Distribution, Vermont Welcome Centers**


"We give them (BLUE MAP) out to everyone!"

— **Mac Borden Burlington Airport Information Counter Staff Lake Champlain Regional Chamber**

"BLUE MAP has proven to be an effective and cost efficient way for City Market to reach tourists throughout Greater Burlington. Thousands of customers walk through our doors daily and many grab a BLUE MAP, making it a useful and well-read marketing brochure."

— **Allison Weinhausen, Director of Member Services City Market, Onion River Co-op**

Ben & Jerry's Ice Cream - Burlington is the original home of Ben & Jerry's. Visit our flagship store on the Church Street Marketplace and indulge in a wide variety of euphoric shakes, sundaes, smoothies and specialty coffee drinks. Enhance any celebration with one of our hand crafted ice cream cakes! We offer the perfect treat for all appetites — dine in or stroll along the pedestrian-friendly marketplace! 802-862-9620. Visit us as well on the UVM campus at the Davis Center. 802-656-8188. www.benjerry.com **Downtown Map: 2F, Greater Burlington Map: 11J**



**New BLUE MAP
on display in
May 2015**

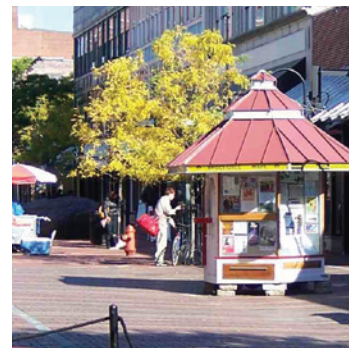


Extra Special Locations! Pick and Choose Your Favorites

CHURCH STREET MARKETPLACE STAFFED KIOSK *	S	\$260 a year
WATERFRONT PACKAGE:		\$395 a year
Waterfront Information Center Staffed **	S	
Burlington Boat House **	S	
Spirit of Ethan Allen Ticket Booth **	S	
DOWNTOWN HOTEL PACKAGE:		\$495 a year
Hilton Hotel, Burlington **	Y	
Courtyard Burlington Harbor Marriott **	Y	
Hotel Vermont **	Y	
SHELBURNE CHARLOTTE PACKAGE:		\$495 a year
Vermont Teddy Bear **	Y	
Shelburne Museum **	Y	
Shelburne Farms **	Y	
Vermont Wildflower Farm **	S	
HOTEL PACKAGE:		\$395 a year
Sheraton Hotel, South Burlington **	Y	
Hampton Inn, Colchester **	Y	
The Essex Resort and Spa **	Y	
WATERBURY CENTER PACKAGE:		\$395 A YEAR
Ben & Jerry's, Waterbury Center **	Y	
Rt 100 / Waterbury Info Booth***	Y	
Cold Hollow Cider, Waterbury Center **	Y	
MONTPELIER PACKAGE:		\$395 A YEAR
State & Elm Info Booth **	Y	
State Capitol, Montpelier **	S	
ASSORTED FANTASTIC LOCATIONS:		
Smugglers' Notch Resort **	Y	\$200 a year
Quechee Gorge Package** (Visitor Center and Village)	Y	\$295 a year
University Mall	Y	\$175 a year
ON BOARD THE LAKE CHAMPLAIN FERRIES		
On 2 Ferries - Charlotte, Vermont to Essex, New York *	S	\$250 a year
On 2 Ferries - Burlington, Vermont to Port Kent, New York *	S	\$250 a year
On 4 Ferries - Grand Isle to Cumberland Head, New York *	Y	\$250 a year
VERMONT FERRY DOCK PACKAGE:		\$195 A YEAR
Charlotte, Vermont - Ferry Dock *	Y	
Burlington, Vermont - King Street Ferry Dock *	S	
NEW YORK FERRY DOCK PACKAGE:		\$395 A YEAR
Cumberland Head, New York - Ferry Dock *	Y	
Port Kent, New York Ferry Dock *	S	
Essex, New York - Ferry Dock *	S	

ASK ABOUT:

- Multi package discounts
- Individual location prices
- 19 additional VT, NY, or NH packages to over 700 displays



KEY

S = Seasonal, approximately from Memorial Day to Columbus Day

Y = Yearly

* Not Included in PP&D Regional Brochure Routes

** Included at no extra charge for PP&D customers who pay for the complete region where this is located.

*** No lodging brochures from outside their region are allowed.



BROCHURE DISTRIBUTION

377 Pine Street
Burlington, VT 05401
(P) 802-862-4366
(F) 802-304-1017
bill@ppdbrochure.com
www.PPDBrochure.com

Blue Map & Brochure Distribution Contract

BLUE MAP distribution is 220,000 copies to over 400 locations in 2015

Business name _____
Notes _____
Address _____
City, State _____ Zip _____
Email _____
Web _____

Contract Status _____ Date _____
Contract Type _____
Contact Name _____
Contact Position _____
Phone _____
Alt Phone _____
Billing Contact _____
Other Contacts _____
Sales Rep _____

BLUE MAP

BLUE MAP LISTING: (8 lines = \$580, 11 lines = \$680) _____

Deadline _____ Ad Size / Lines _____ Map Code _____

Map _____ Map Sub Category _____ Map Coordinates _____

Materials Due: _____ New Copy: _____ New Photo: _____ New Logo: _____ New Display Ad: _____ New Map Location: _____

BROCHURE DISTRIBUTION

Church St. Marketplace (s) (\$260) _____

Waterfront Package (\$395) _____

*Waterfront Info Center (s), Burlington
Boat House (s), Spirit of Ethan Allen (s)*

Burlington Hotel Package (\$495) _____

*Hilton Hotel (y), Harbor Marriott (y)
Hotel Vermont (y)*

Shelburne Package (\$495) _____

*VT Teddy Bear (y), Shelburne
Museum (y) Shelburne Farms (y)
VT Wildflower Farm (s)*

Chittenden Hotel Package (\$395) _____

*Sheraton Hotel (y), Hampton Inn (y)
The Essex (y)*

University Mall (y) (\$175) _____

Waterbury Ctr. Package: (\$395) _____

*Ben & Jerry's (y), Rt 100 Info Booth (y)
Cold Hollow Cider (y)*

Montpelier Package (\$395) _____

*State & Elm Info Booth (y)
State Capitol (s)*

Smugglers' Notch Resort (y) (\$200) _____

Quechee Gorge Package (\$295) _____

*Includes Visitor Center (y)
and Village (y)*

Charlotte-Essex Ferry (y) (\$250) _____

Burlington-Port Kent Ferry (s) (\$250) _____

Grand Isle-Cumberland Head Ferry _____

(y) (\$250)

VT Ferry Dock Package (\$195) _____

Charlotte (y), Burlington (s)

NY Ferry Dock Package (\$395) _____

*Cumberland Head (y), Port Kent (s)
Essex (s)*

Note A _____

Note B _____

SUB TOTAL _____

Adjustments _____

s = seasonal y = yearly

TOTAL SALE

PAYMENT TERMS

Invoice will be sent upon receipt of signed contract.

Billing will be according to payment plan below:

Amount Due Due Date

DEPOSIT

PAYMENT 1

PAYMENT 2

PAYMENT 3

PAYMENT 4

Total _____

NOTE _____

AGREEMENT

1. Terms: Past due balances are subject to a 1.5% monthly service charge (Annual rate of 18%.)
2. All balances 90 days past due are subject to collection fees and attorney fees.
3. Publisher's Liability Limits: The publisher's liability for any error will not exceed the cost of the advertising space.
4. Positioning: Positioning of advertisements is at the discretion of the publisher.

Client Signature **X** _____

PPD Signature _____

Date _____