

What can you learn about organizational success from a restaurant management company, a health care system, a small school district and a nonprofit business? *

Discover the answers at the

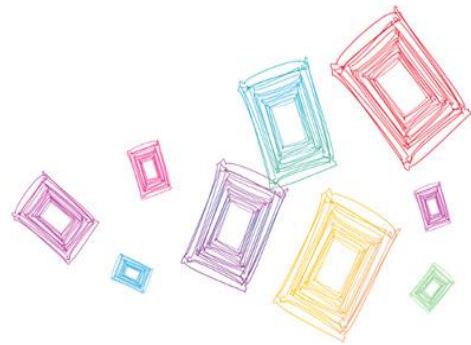
2014 Excellence at Work Conference

Wednesday - March 12, 2014

American Family Conference Center – Madison, WI

The conference is designed to motivate, inspire and provide practical tools and techniques to help individuals and organizations increase their productivity.

Learn best practices from role model organizations and network with others to grow your performance potential.



* **They each use the Baldrige framework to drive organizational improvement and sustainability.**

- SSM Health Care of Wisconsin was a recipient of the 2013 Wisconsin Forward Award at the excellence level.
- Pewaukee School District was a recipient of the 2013 Malcolm Baldrige National Quality Award.
- MetaStar was a recipient of the 2013 Wisconsin Forward Award at the mastery level.
- K&N Management was a recipient of the 2010 Malcolm Baldrige National Quality Award.

The Malcolm Baldrige National Quality Award is the nation's highest Presidential honor for performance excellence through innovation, improvement and visionary leadership.

The Wisconsin Forward Award is modeled upon the Malcolm Baldrige National Quality Award and recognizes organizations in the state of Wisconsin that have achieved performance excellence.

Hear from these and other great organizations on the following topics

- employee engagement
 - corporate culture
 - sustainability
 - strategic planning
 - process improvement
 - Baldrige criteria
 - leadership
 - innovation
- and more!*

Registration Fees: \$ 125.00 (WCPE members) **\$ 200.00** (non-members)

Lunch and breaks provided.

Sponsored by



To register or for more information

visit www.wisquality.org
or contact 608-663-5300