

# Labor Market Overview

Albany-Schenectady-Troy MSA

March 2014



*prepared by:*

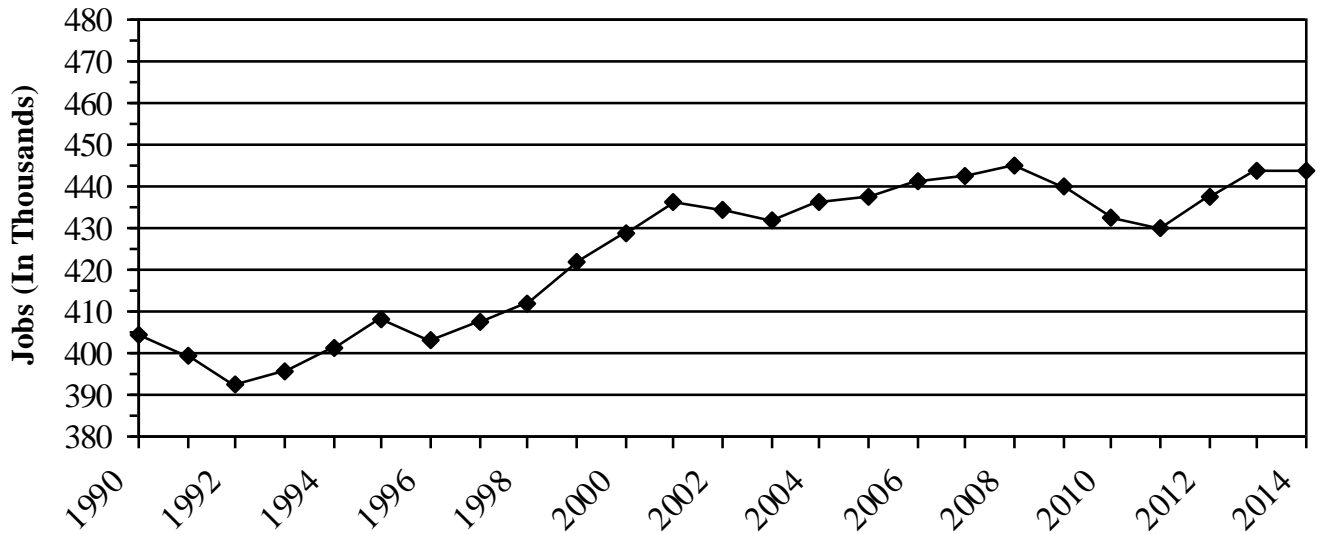
James H. Ross

Labor Market Analyst

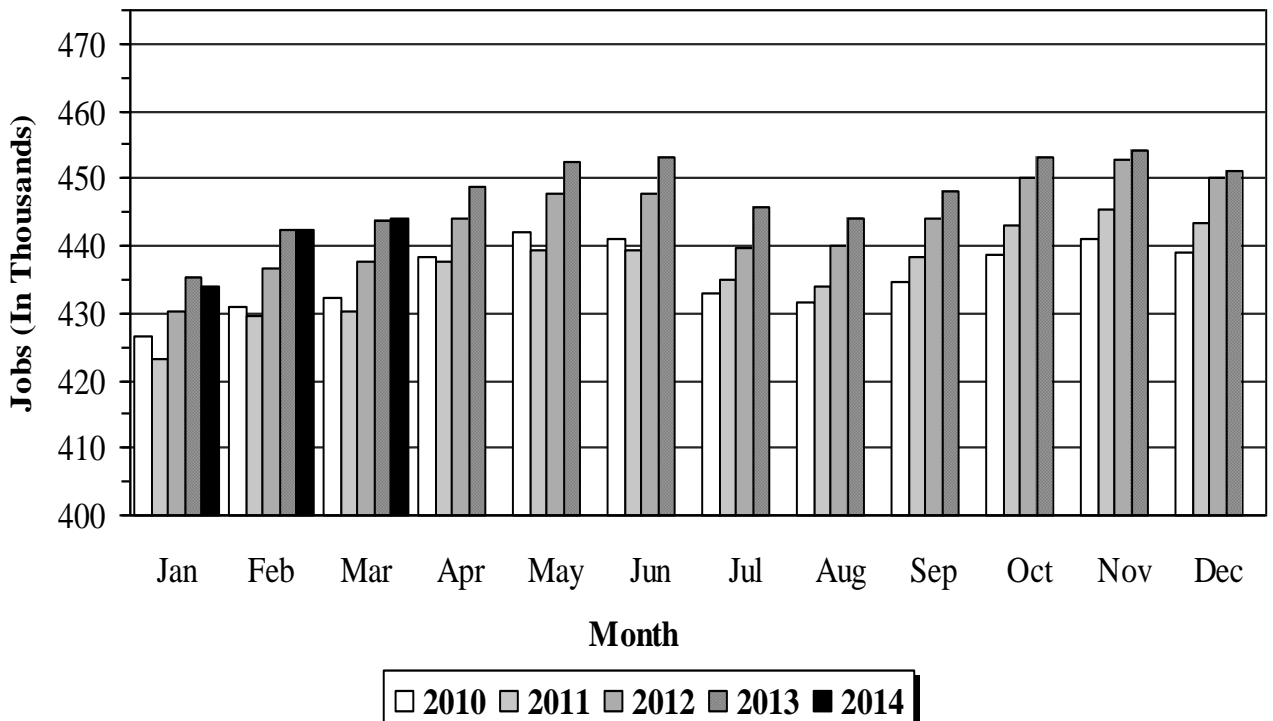
*Available online at [www.labor.state.ny.us/stats/cap/albany.pdf](http://www.labor.state.ny.us/stats/cap/albany.pdf)*



# **NONAGRICULTURAL WAGE AND SALARY JOBS** **ALBANY-SCHENECTADY-TROY MSA,** **March 1990-March 2014**

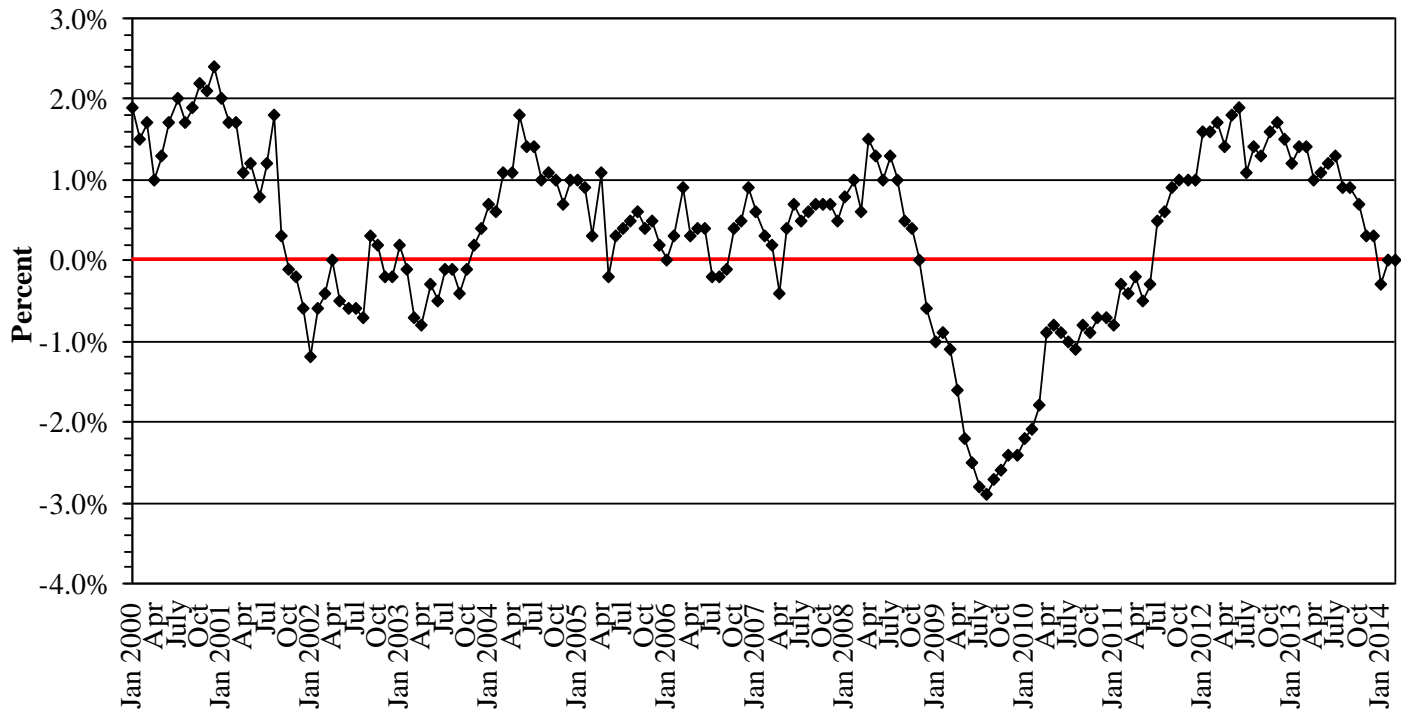


## **MONTHLY JOB COUNTS** **ALBANY - SCHENECTADY - TROY MSA, 2010 - 2014**



## RATE OF GROWTH IN JOBS

ALBANY - SCHENECTADY - TROY MSA, January 2000 -March 2014

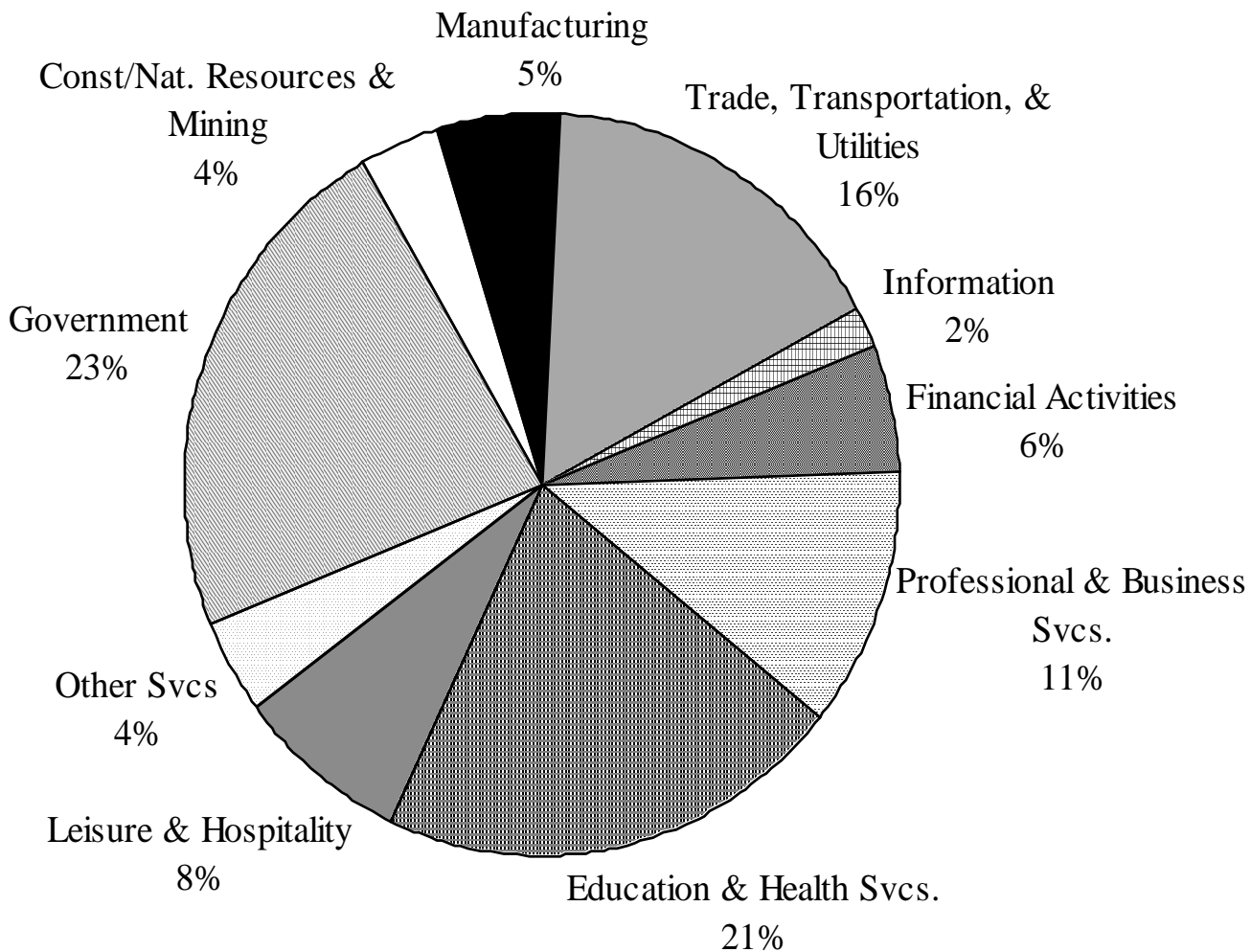


*Note: Based on year-to-year change*

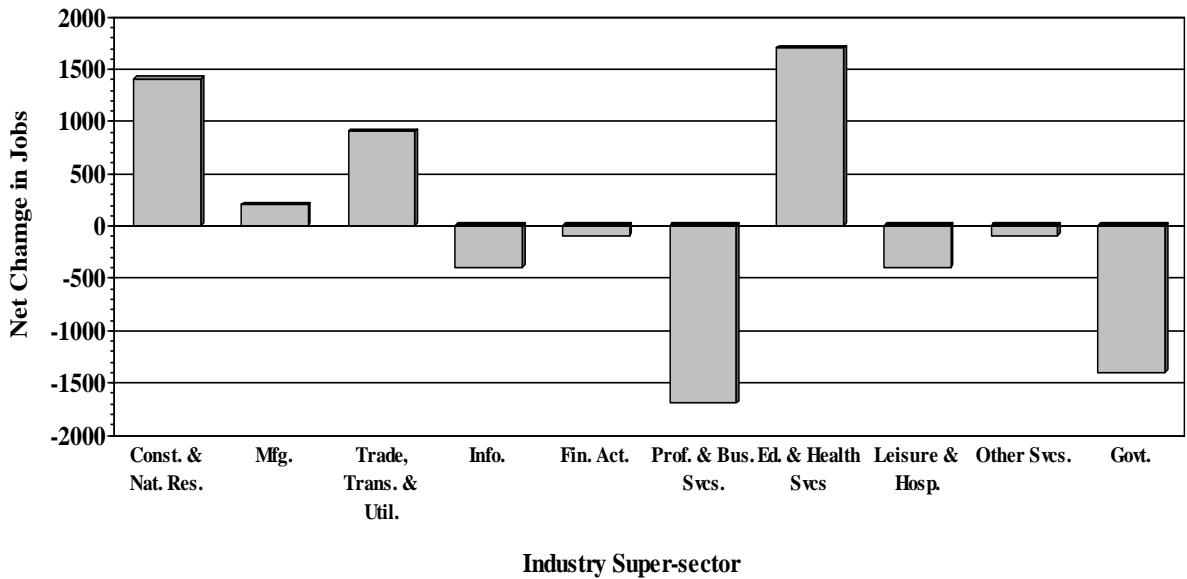
## NONAGRICULTURAL EMPLOYMENT BY SUPER-SECTOR

ALBANY-SCHENECTADY-TROY MSA, MARCH 2014

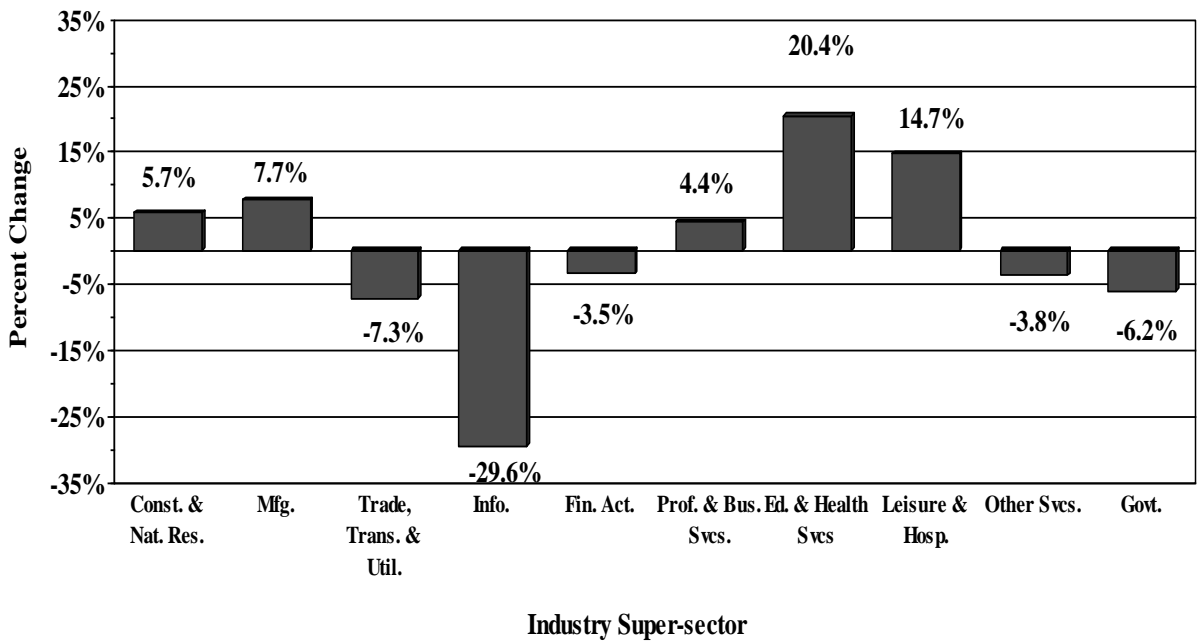
### *Industry Super-sector*



**NET CHANGE IN JOB COUNTS BY SUPER-SECTOR**  
ALBANY - SCHENECTADY - TROY MSA, March 2013 - March 2014



**PERCENT CHANGE IN JOB COUNTS BY SUPER-SECTOR**  
ALBANY - SCHENECTADY - TROY MSA, March 2004 - March 2014



**Table 1. Number of Nonfarm Jobs by Place of Work  
New York State and Areas  
(In Thousands, Not Seasonally Adjusted)**

Area	March 2014	March 2013 (R.)	Change to March 2014 from:	
			March 2013	
			Net	%
New York State	8,898.0	8,794.4	103.6	1.2
<b>Metropolitan Areas</b>				
Albany-Schenectady-Troy	443.9	443.8	0.1	0.0
Binghamton	105.1	105.5	-0.4	-0.4
Buffalo-Niagara Falls	544.0	540.8	3.2	0.6
Elmira	37.9	38.7	-0.8	-2.1
Glens Falls	51.4	51.4	0.0	0.0
Ithaca (Tompkins County)	69.9	70.9	-1.0	-1.4
Kingston (Ulster County)	59.5	58.4	1.1	1.9
Nassau-Suffolk	1,260.6	1,250.0	10.6	0.8
New York City	3,998.0	3,924.4	73.6	1.9
Poughkeepsie-Newburgh-Middletown	253.1	249.3	3.8	1.5
Putnam-Rockland-Westchester	557.1	555.5	1.6	0.3
Rochester	512.6	510.4	2.2	0.4
Syracuse	312.3	313.8	-1.5	-0.5
Utica-Rome	125.4	125.1	0.3	0.2
<b>Counties Outside Metropolitan Areas</b>				
Allegany	18.5	18.5	0.0	0.0
Cattaraugus	33.4	33.3	0.1	0.3
Cayuga	25.3	25.6	-0.3	-1.2
Chautauqua	52.1	52.7	-0.6	-1.1
Chenango	18.3	18.0	0.3	1.7
Clinton	33.3	33.5	-0.2	-0.6
Columbia	20.6	20.2	0.4	2.0
Cortland	19.1	19.6	-0.5	-2.6
Delaware	16.1	16.0	0.1	0.6
Essex	14.3	14.5	-0.2	-1.4
Franklin	19.1	19.2	-0.1	-0.5
Fulton	17.7	17.7	0.0	0.0
Genesee	21.7	21.6	0.1	0.5
Greene	14.4	14.3	0.1	0.7
Hamilton	1.8	1.8	0.0	0.0
Jefferson	40.6	40.9	-0.3	-0.7
Lewis	6.2	6.3	-0.1	-1.6
Montgomery	18.5	18.2	0.3	1.6
Otsego	26.4	26.4	0.0	0.0
St. Lawrence	41.3	41.4	-0.1	-0.2
Schuyler	4.5	4.5	0.0	0.0
Seneca	11.0	11.0	0.0	0.0
Steuben	38.2	37.5	0.7	1.9
Sullivan	23.8	24.4	-0.6	-2.5
Wyoming	12.9	12.9	0.0	0.0
Yates	7.5	7.6	-0.1	-1.3

Note: Data are subject to revision. R=Revised. Net and % changes based on rounded data.  
Source: New York State Department of Labor, Division of Research and Statistics, 518-457-3800.

**EMPLOYMENT IN NONAGRICULTURAL ESTABLISHMENTS, BY PLACE OF WORK**  
**ALBANY-SCHENECTADY-TROY AREA**  
(In thousands, not seasonally adjusted)

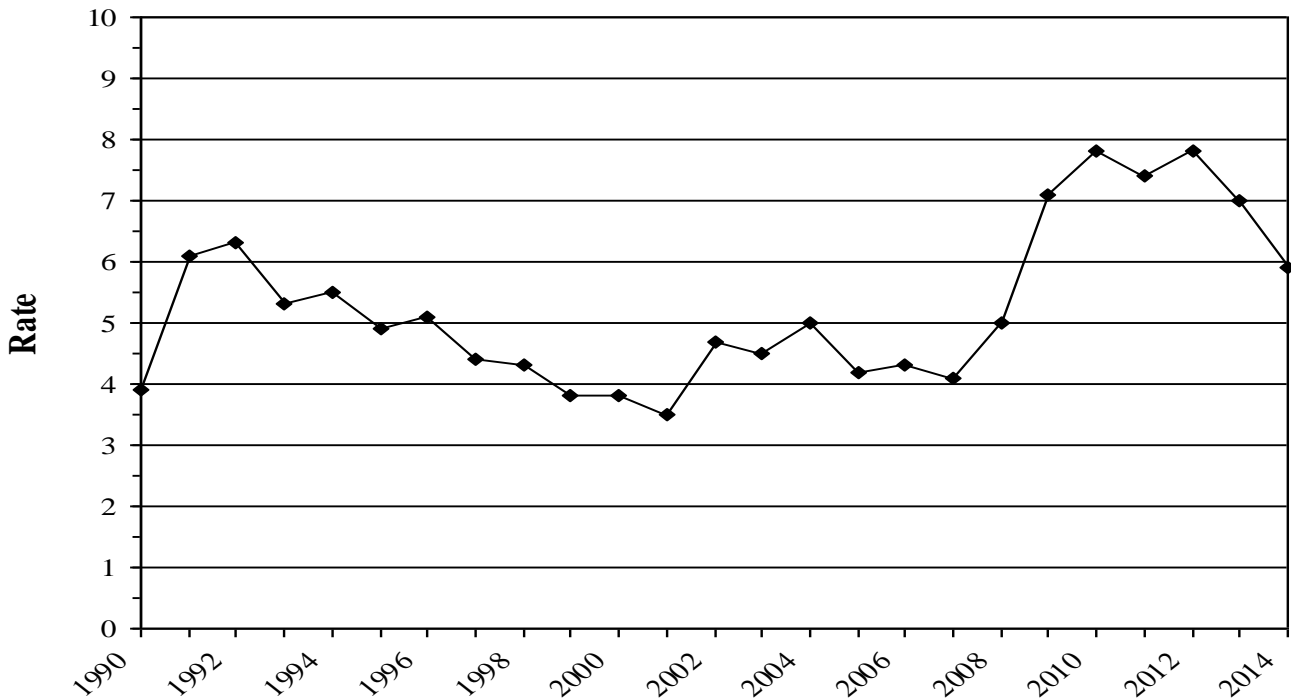
Industry	MAR 2014	FEB 2014	MAR 2013	Net Month	Pct Month	Net Year	Pct Year
Total Nonfarm	443.9	442.5	443.8	1.4	0.3	0.1	0.0
Total Private	342.2	340.4	340.7	1.8	0.5	1.5	0.4
Goods Producing	40.5	39.9	38.9	0.6	1.5	1.6	4.1
Natural Resources, Mining and Construction	16.6	16.0	15.2	0.6	3.8	1.4	9.2
Manufacturing	23.9	23.9	23.7	0.0	0.0	0.2	0.8
Service Providing	403.4	402.6	404.9	0.8	0.2	-1.5	-0.4
Private Service Providing	301.7	300.5	301.8	1.2	0.4	-0.1	0.0
Trade, Transportation, and Utilities	72.5	72.2	71.6	0.3	0.4	0.9	1.3
Wholesale Trade	13.6	13.6	13.5	0.0	0.0	0.1	0.7
Retail Trade	46.7	46.5	46.1	0.2	0.4	0.6	1.3
Food and Beverage Stores	11.1	11.0	10.9	0.1	0.9	0.2	1.8
General Merchandise Stores	8.3	8.4	8.3	-0.1	-1.2	0.0	0.0
Transportation, Warehousing, and Utilities	12.2	12.1	12.0	0.1	0.8	0.2	1.7
Transportation and Warehousing	10.7	10.6	10.5	0.1	0.9	0.2	1.9
Information	8.1	8.2	8.5	-0.1	-1.2	-0.4	-4.7
Telecommunications	2.6	2.6	2.7	0.0	0.0	-0.1	-3.7
Financial Activities	25.0	25.0	25.1	0.0	0.0	-0.1	-0.4
Professional and Business Services	50.2	50.3	51.9	-0.1	-0.2	-1.7	-3.3
Professional, Scientific, and Technical Services	28.6	29.0	30.2	-0.4	-1.4	-1.6	-5.3
Management of Companies and Enterprises	6.8	6.7	7.0	0.1	1.5	-0.2	-2.9
Admin. & Supp. and Waste Manage. & Remed. Servs.	14.8	14.6	14.7	0.2	1.4	0.1	0.7
Education and Health Services	93.7	92.8	92.0	0.9	1.0	1.7	1.8
Educational Services	31.1	31.2	30.6	-0.1	-0.3	0.5	1.6
Health Care and Social Assistance	62.6	61.6	61.4	1.0	1.6	1.2	2.0
Ambulatory Health Care Services	18.4	18.3	17.7	0.1	0.5	0.7	4.0
Hospitals	18.2	18.2	18.4	0.0	0.0	-0.2	-1.1
Leisure and Hospitality	34.4	34.3	34.8	0.1	0.3	-0.4	-1.1
Accommodation and Food Services	29.3	29.3	30.3	0.0	0.0	-1.0	-3.3
Other Services	17.8	17.7	17.9	0.1	0.6	-0.1	-0.6
Government	101.7	102.1	103.1	-0.4	-0.4	-1.4	-1.4
Federal Government	6.3	6.3	6.5	0.0	0.0	-0.2	-3.1
Federal Government Hospitals	1.6	1.6	1.6	0.0	0.0	0.0	0.0
State Government	50.8	50.7	51.2	0.1	0.2	-0.4	-0.8
State Government Education	7.1	7.0	7.1	0.1	1.4	0.0	0.0
State Government Hospitals	0.6	0.6	0.6	0.0	0.0	0.0	0.0
Local Government	44.6	45.1	45.4	-0.5	-1.1	-0.8	-1.8
Local Government Education	26.8	27.4	27.4	-0.6	-2.2	-0.6	-2.2

NOTE: DATA ARE SUBJECT TO REVISION. DETAIL MAY NOT ADD TO TOTALS DUE TO ROUNDING. NET AND PERCENT CHANGES ARE BASED ON ROUNDED DATA

# UNEMPLOYMENT RATE

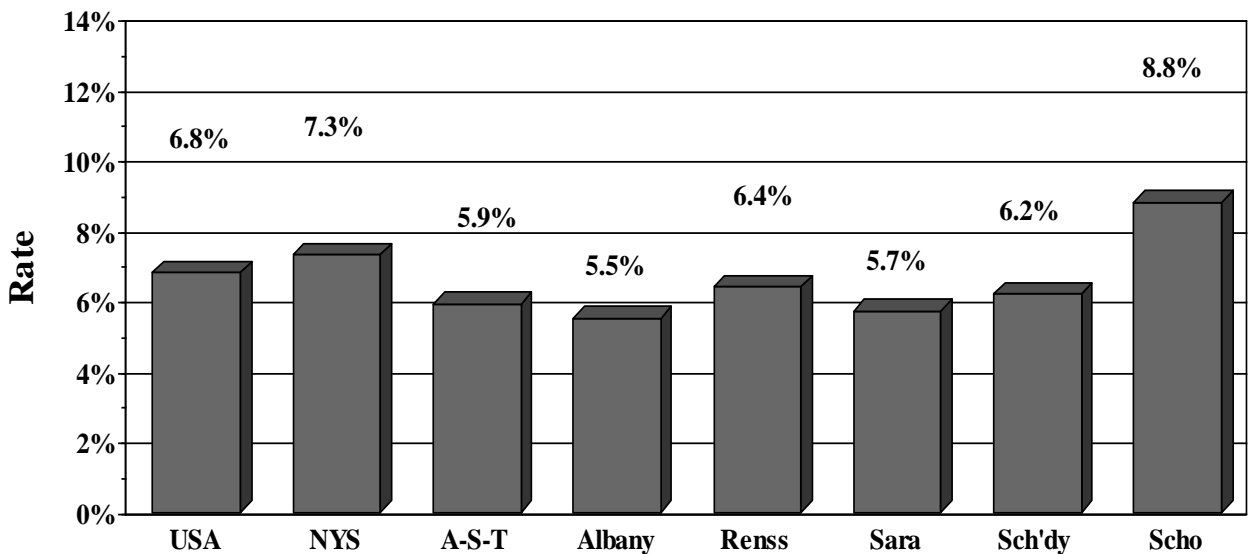
## ALBANY-SCHENECTADY-TROY MSA,

March 1990 – March 2014



## RESIDENT CIVILIAN UNEMPLOYMENT RATE - March 2014

United States, New York State & Albany-Schenectady-Troy MSA By County





**Employed, Unemployed, and Rate of Unemployment**  
**By Place of Residence**  
**For New York State and Major Labor Areas, March 2014**  
(Numbers in thousands, not seasonally adjusted)

AREA/COUNTY	EMPLOYED			UNEMPLOYED			UNEMPLOYMENT RATE (%)		
	Mar. 2014	Mar. 2013	Net Change	Mar. 2014	Mar. 2013	Net Change	Mar. 2014	Mar. 2013	Net Change
United States	145,090	142,698	+2,392	10,537	11,815	-1,278	6.8	7.6	-0.8
New York State	8,916.4	8,809.8	+106.5	697.4	762.7	-65.3	7.3	8.0	-0.7
New York City	3,767.7	3,685.7	+82.0	341.0	347.6	-6.6	8.3	8.6	-0.3
Bronx	500.4	489.5	+10.9	66.2	65.5	+0.7	11.7	11.8	-0.1
Kings	1,065.5	1,042.3	+23.2	103.0	106.5	-3.5	8.8	9.3	-0.5
New York	896.1	876.5	+19.5	64.6	67.9	-3.3	6.7	7.2	-0.5
Queens	1,077.3	1,053.8	+23.5	88.2	89.1	-0.8	7.6	7.8	-0.2
Richmond	228.6	223.6	+5.0	18.9	18.6	+0.3	7.6	7.7	-0.1
Putnam-Rockland-Westchester	638.7	633.9	+4.8	37.7	43.9	-6.2	5.6	6.5	-0.9
Putnam	49.9	49.5	+0.4	2.7	3.3	-0.5	5.2	6.2	-1.0
Rockland	147.0	145.9	+1.1	8.2	9.6	-1.5	5.3	6.2	-0.9
Westchester	441.8	438.5	+3.3	26.8	31.0	-4.2	5.7	6.6	-0.9
Nassau-Suffolk	1,387.0	1,373.0	+14.0	83.2	96.5	-13.3	5.7	6.6	-0.9
Nassau	651.0	644.4	+6.5	35.9	42.5	-6.6	5.2	6.2	-1.0
Suffolk	736.0	728.6	+7.4	47.3	54.1	-6.7	6.0	6.9	-0.9
Albany-Schenectady-Troy	413.8	414.0	-0.2	26.1	30.9	-4.8	5.9	7.0	-1.1
Albany	144.7	144.8	-0.1	8.4	10.0	-1.6	5.5	6.5	-1.0
Rensselaer	76.1	76.1	-0.0	5.2	6.2	-1.0	6.4	7.5	-1.1
Saratoga	110.0	110.1	-0.1	6.6	7.8	-1.2	5.7	6.6	-0.9
Schenectady	69.2	69.2	-0.0	4.5	5.4	-0.9	6.2	7.2	-1.0
Schoharie	13.8	13.8	-0.0	1.3	1.5	-0.2	8.8	10.1	-1.3
Binghamton	105.0	105.5	-0.5	8.7	9.8	-1.2	7.6	8.5	-0.9
Broome	82.8	83.3	-0.4	6.8	7.7	-0.9	7.6	8.4	-0.8
Tioga	22.1	22.2	-0.1	1.9	2.2	-0.3	7.9	8.8	-0.9
Buffalo-Niagara	525.0	522.6	+2.4	40.1	46.5	-6.3	7.1	8.2	-1.1
Erie	424.6	422.6	+2.0	31.3	36.5	-5.2	6.9	7.9	-1.0
Niagara	100.4	100.0	+0.5	8.9	10.0	-1.1	8.1	9.1	-1.0
Elmira (Chemung)	35.1	35.7	-0.6	2.9	3.5	-0.6	7.6	9.0	-1.4
Glens Falls	58.5	58.6	-0.1	5.0	5.8	-0.7	7.9	9.0	-1.1
Warren	30.7	30.7	-0.1	2.7	3.2	-0.4	8.2	9.4	-1.2
Washington	27.8	27.9	-0.1	2.3	2.6	-0.3	7.6	8.5	-0.9
Ithaca (Tompkins)	56.0	56.7	-0.7	2.6	3.0	-0.4	4.4	5.0	-0.6
Kingston (Ulster)	79.3	77.8	+1.5	6.0	7.1	-1.2	7.0	8.4	-1.4
Poughkeepsie-Newburgh-Middletown	296.8	292.9	+3.9	19.7	23.4	-3.7	6.2	7.4	-1.2
Dutchess	135.0	133.2	+1.8	8.8	10.2	-1.4	6.1	7.1	-1.0
Orange	161.9	159.7	+2.1	10.9	13.2	-2.3	6.3	7.6	-1.3
Rochester	483.6	481.7	+1.9	34.7	40.0	-5.3	6.7	7.7	-1.0
Livingston	29.4	29.3	+0.1	2.3	2.8	-0.5	7.3	8.8	-1.5
Monroe	341.3	339.9	+1.4	23.2	26.5	-3.3	6.4	7.2	-0.8
Ontario	52.5	52.3	+0.2	3.8	4.4	-0.6	6.8	7.8	-1.0
Orleans	17.3	17.3	+0.1	1.8	1.9	-0.1	9.5	10.0	-0.5
Wayne	43.1	42.9	+0.2	3.5	4.3	-0.8	7.6	9.2	-1.6
Syracuse	291.5	292.9	-1.5	22.2	26.1	-3.8	7.1	8.2	-1.1
Madison	32.3	32.4	-0.2	2.9	3.2	-0.2	8.3	8.9	-0.6
Onondaga	208.2	209.2	-1.0	14.2	16.7	-2.6	6.4	7.4	-1.0
Oswego	51.0	51.3	-0.3	5.1	6.2	-1.0	9.1	10.7	-1.6
Utica-Rome	122.1	122.0	+0.1	10.0	11.6	-1.6	7.6	8.7	-1.1
Herkimer	27.2	27.2	+0.0	2.6	2.9	-0.3	8.8	9.7	-0.9
Oneida	94.9	94.8	+0.1	7.4	8.7	-1.3	7.2	8.4	-1.2

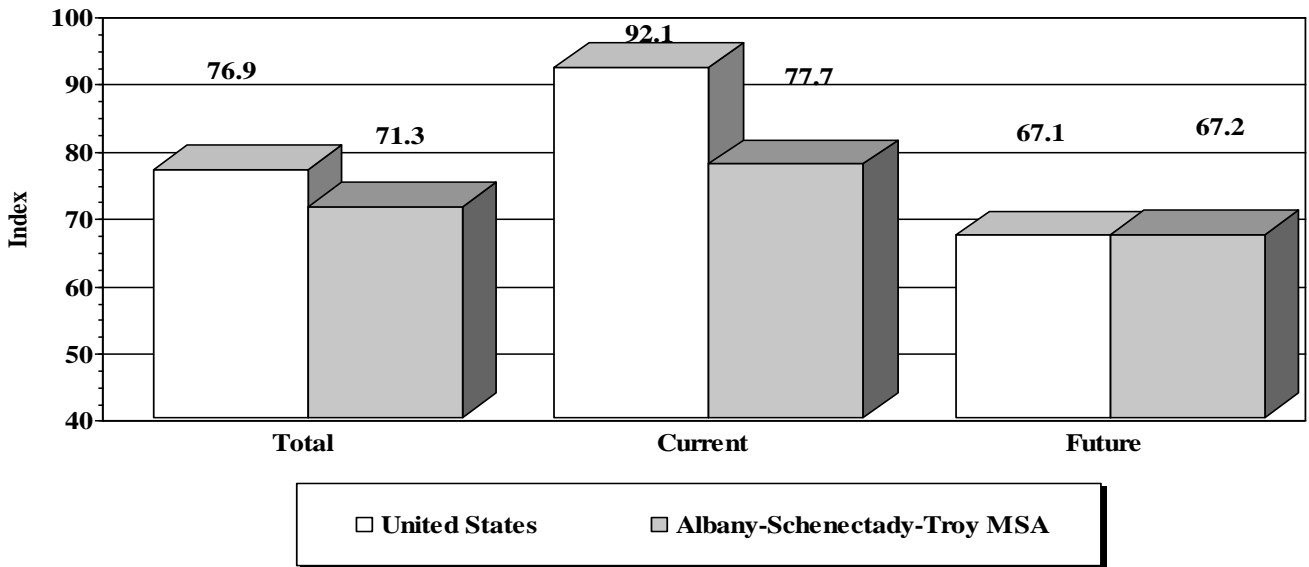
Note: Data are subject to revision. Detail may not add to totals due to rounding.

**Employed, Unemployed, and Rate of Unemployment**  
**By Place of Residence**  
**For Counties Not Within Major Labor Areas, March 2014**  
(Numbers in thousands, not seasonally adjusted)

AREA/COUNTY	EMPLOYED			UNEMPLOYED			UNEMPLOYMENT RATE (%)		
	Mar. 2014	Mar. 2013	Net Change	Mar. 2014	Mar. 2013	Net Change	Mar. 2014	Mar. 2013	Net Change
Allegany	22.3	22.4	-0.1	1.8	2.0	-0.2	7.5	8.4	-0.9
Cattaraugus	36.8	36.9	-0.0	3.1	3.6	-0.5	7.8	9.0	-1.2
Cayuga	36.3	36.6	-0.3	2.8	3.3	-0.5	7.2	8.2	-1.0
Chautauqua	55.8	56.3	-0.5	4.7	5.2	-0.6	7.7	8.5	-0.8
Chenango	22.8	22.6	+0.2	1.8	2.1	-0.3	7.1	8.4	-1.3
Clinton	33.4	33.5	-0.1	2.9	3.5	-0.6	8.1	9.6	-1.5
Columbia	28.4	27.9	+0.6	1.9	2.1	-0.3	6.2	7.1	-0.9
Cortland	22.1	22.5	-0.4	2.0	2.2	-0.2	8.2	8.9	-0.7
Delaware	19.0	18.9	+0.1	1.6	1.9	-0.3	7.6	9.1	-1.5
Essex	15.7	15.8	-0.1	1.6	1.9	-0.3	9.3	10.6	-1.3
Franklin	19.9	20.0	-0.1	1.9	2.3	-0.4	8.8	10.2	-1.4
Fulton	23.3	23.2	+0.1	2.2	2.7	-0.5	8.5	10.5	-2.0
Genesee	28.7	28.7	+0.0	2.1	2.4	-0.3	6.8	7.7	-0.9
Greene	21.2	21.0	+0.3	1.7	2.2	-0.4	7.6	9.3	-1.7
Hamilton	2.4	2.4	+0.0	0.3	0.3	-0.0	9.6	11.3	-1.7
Jefferson	41.4	41.7	-0.3	4.7	5.2	-0.5	10.1	11.1	-1.0
Lewis	10.6	10.7	-0.2	1.3	1.4	-0.2	10.7	11.7	-1.0
Montgomery	21.0	20.8	+0.2	2.0	2.4	-0.4	8.7	10.4	-1.7
Otsego	28.2	28.2	-0.1	2.0	2.5	-0.4	6.8	8.0	-1.2
St. Lawrence	43.7	43.7	-0.1	4.5	5.0	-0.5	9.2	10.2	-1.0
Schuyler	8.6	8.7	-0.1	0.7	0.9	-0.1	7.8	9.2	-1.4
Seneca	15.1	15.1	+0.1	1.1	1.3	-0.2	6.8	8.0	-1.2
Steuben	39.8	39.3	+0.5	3.6	4.4	-0.8	8.3	10.1	-1.8
Sullivan	29.5	29.9	-0.4	2.7	3.2	-0.4	8.4	9.6	-1.2
Wyoming	18.1	18.1	+0.0	1.7	1.9	-0.2	8.5	9.4	-0.9
Yates	12.1	12.2	-0.1	0.8	1.0	-0.1	6.4	7.3	-0.9

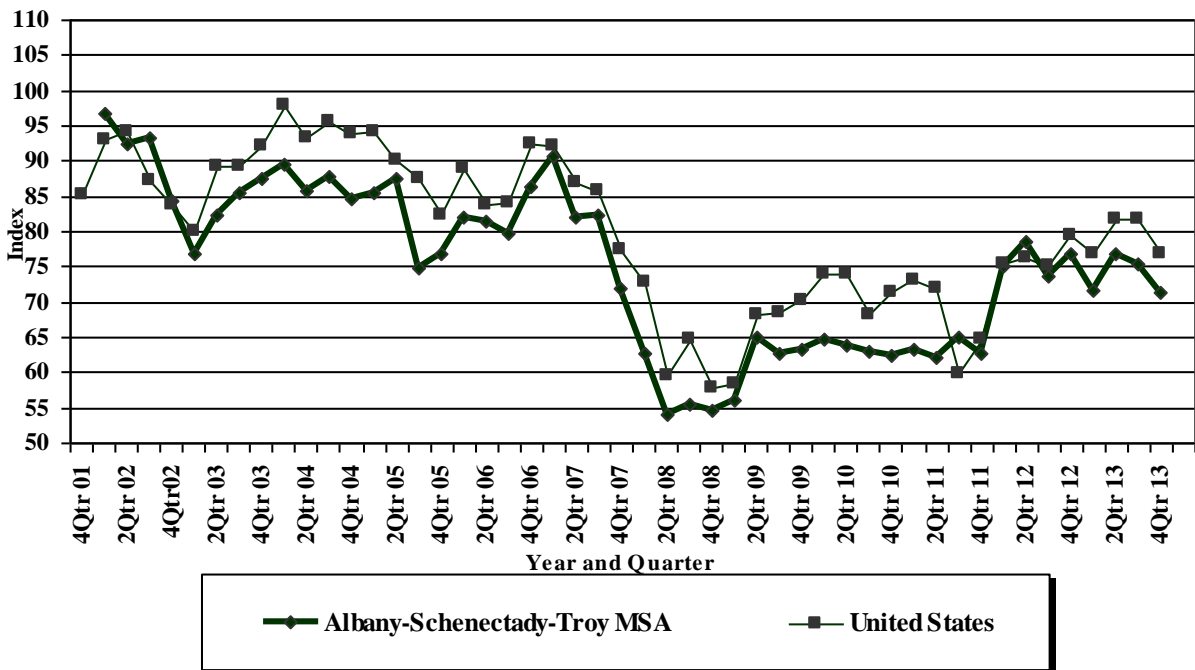
Note: Data are subject to revision. Detail may not add to totals due to rounding.

# **CONSUMER CONFIDENCE INDEX** **UNITED STATES AND ALBANY-SCHENECTADY-TROY MSA** **FOURTH QUARTER 2013**



*Source: Siena Research Institute*

## **CONSUMER CONFIDENCE INDEX** **UNITED STATES AND ALBANY-SCHENECTADY-TROY MSA**



## FACT SHEET

This fact sheet conveys important technical information that will contribute to a better understanding of resident labor force, including unemployment rates, and job data included in this and future press releases.

### State unemployment rates based on regression model

Unemployment rates for New York State and all other states (as well as New York City and the City of Los Angeles) are estimated using time-series regression models developed by the U.S. Bureau of Labor Statistics. The model reduces month-to-month variation in labor force data by reducing variation caused by sampling errors and other statistical noise (irregularities).

### Benchmarking of estimates

At the end of each year, labor force data are revised to reflect updated input data including new Census population controls, revised establishment jobs data, and revised state-level data from the Current Population Survey (CPS). As part of this procedure, all state figures are reviewed, revised as necessary, and then re-estimated. This process is commonly referred to as "benchmarking."

### Changes in methodology

With the release of January 2005 data, a new time-series regression model that utilizes "real-time" benchmarking is in effect. The redesigned model should reduce end-of-year revisions as major economic events will be reflected in a more timely manner. The new model also changes how estimates of new entrants or re-entrants into the labor force are made for sub-state areas, which may result in higher or lower unemployment rates in some sub-state areas. Also effective with the release of January 2005 data are updated metro area definitions. Please see <http://www.labor.state.ny.us/pdf/enys1104.pdf> for additional details.

### Unemployed and UI Beneficiaries

The estimate of the number of unemployed includes all persons who had no employment during the reference week (the week including the 12th of the month), were available for work, except for temporary illness, and had made specific efforts to find employment sometime during the 4-week period ending with the reference week. Unemployment insurance (UI) beneficiaries include those who apply for and qualify for UI benefits. Consequently, the estimate of the number of unemployed and the number of UI beneficiaries do not necessarily move in tandem. Persons collecting UI benefits generally make up from 35 to 50 percent of the unemployed.

### Job data

Monthly job data are obtained from the Current Employment Statistics survey of business establishments, which samples 18,000 establishments in New York State. The survey excludes self-employed workers, agricultural workers, unpaid family workers and domestic workers employed by private households. The data represent a count of jobs by place of work. Estimates for each month are revised the following month, as well as at the end of each year, as more complete data become available.

### Press release availability

In an effort to distribute information faster and more reliably and to reduce shipping costs, the New York State Department of Labor's monthly press release is available exclusively online at: <http://www.labor.state.ny.us>.