

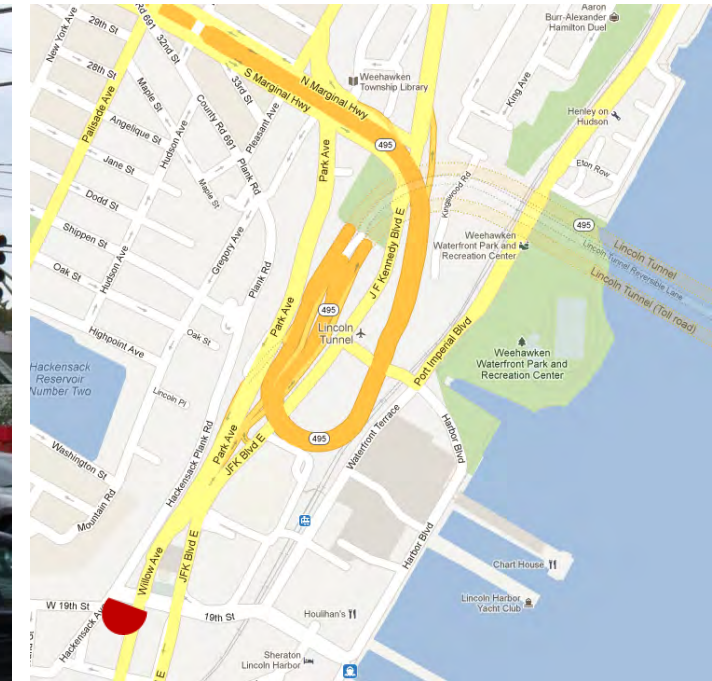
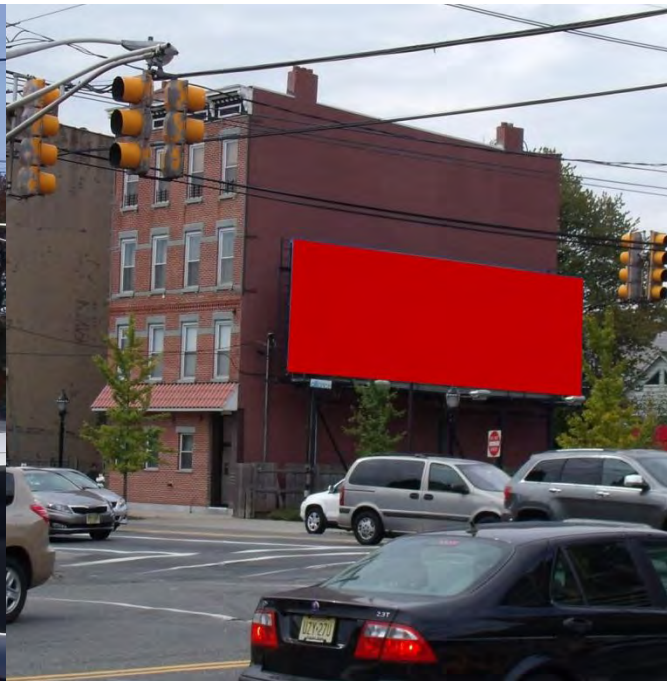
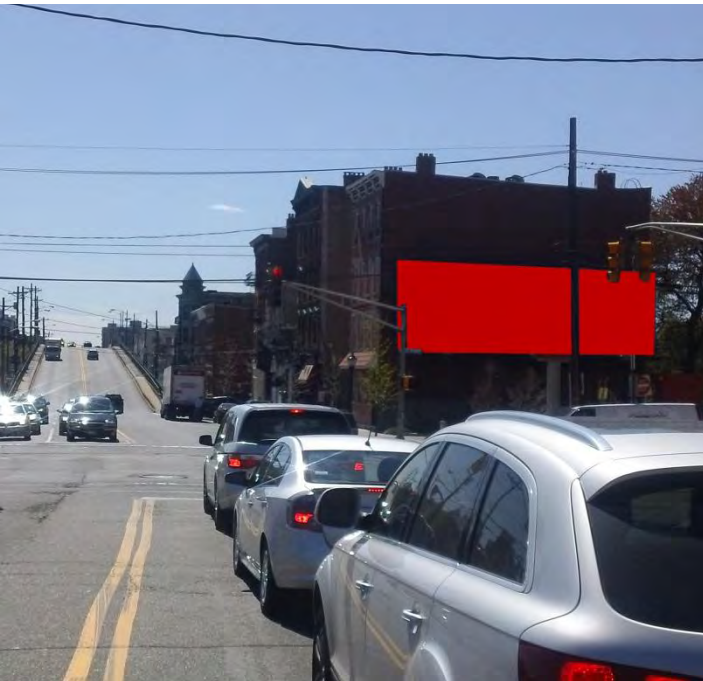
NEW YORK METRO

Bulletins in North Jersey

Our growing collection of Bulletins include locations near the Lincoln Tunnel, Newark Airport and roads feeding the New Jersey Turnpike and George Washington Bridge.

Please contact us for more info & rates.

- Newark:** I-78 West to EWR
- Hoboken:** Lincoln Tunnel to Hoboken
- Union City:** 495 to Lincoln Tunnel
- Union City:** 31st St. to 495 & NJTP
- Little Ferry:** 46 West to Route 17
- Little Ferry:** 46 East to NJTP/GWB



NEW YORK METRO

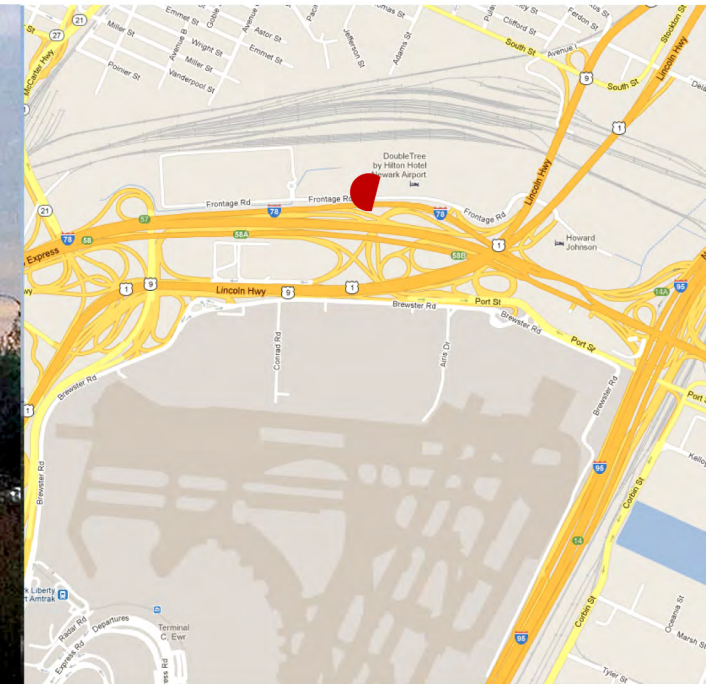
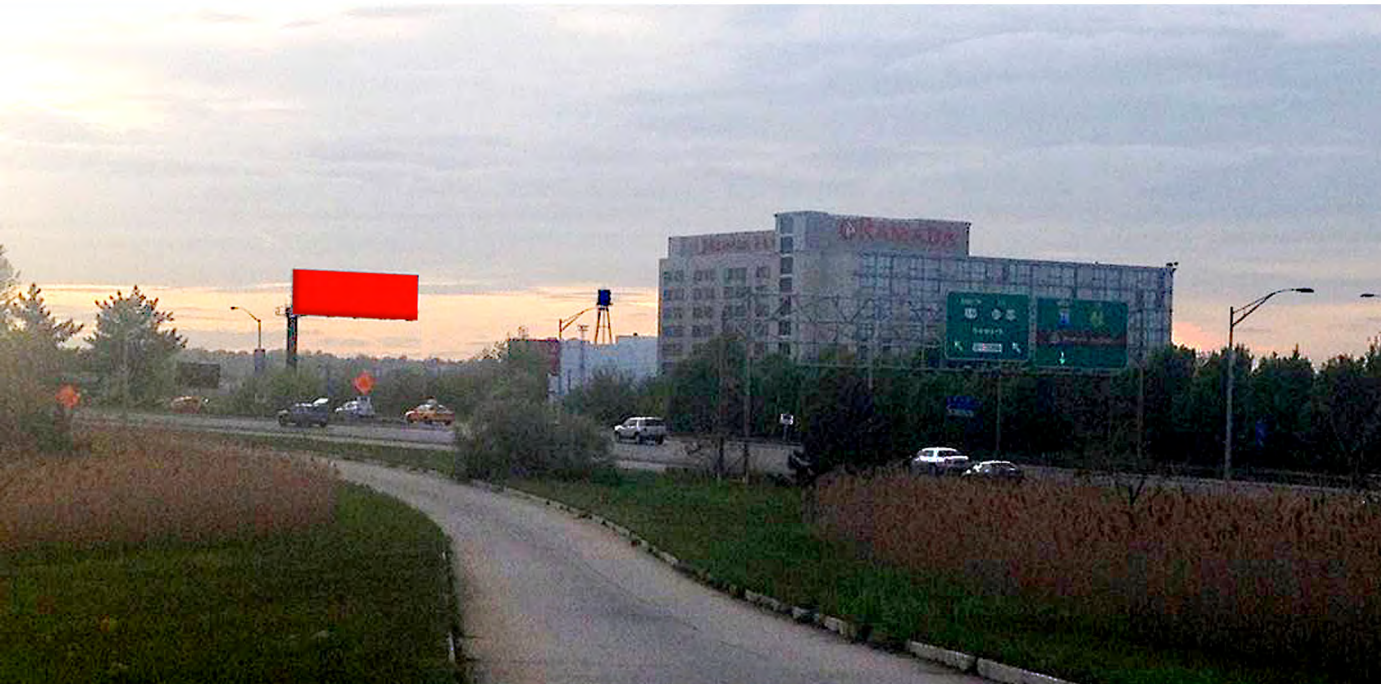
Unit 4372: Willow Ave @ 19th St., W/O Lincoln Tunnel (Hoboken, NJ)

Direct read for all Lincoln Tunnel traffic heading to Hoboken along one of the main arteries exiting the tunnel, which is less than 1/2 mile away. Hoboken is part of the New York metro area,. The median age is 30, with 50% of its 40,000 residents in the 25-44 age group. It's known for having an active night life, with over 85 bars per square mile, more per capita than anywhere else in the country. The city also contains Hoboken Terminal, a major transportation hub for the region.

Size: 14 x 48
Media / Style: Permanent Bulletin / Regular
Facing / Read: North / Right
Material: Vinyl
Illuminated: YES

Total 18+ EOI: 101,922
Lat / Long: 40.7600 / -74.0279
Zip: 07086

TAB Unique ID#: 30639033
Look Media ID#: 4372



NEW YORK METRO

Unit 4373: I-78 West @ Route 1 & 9 (Newark, NJ)

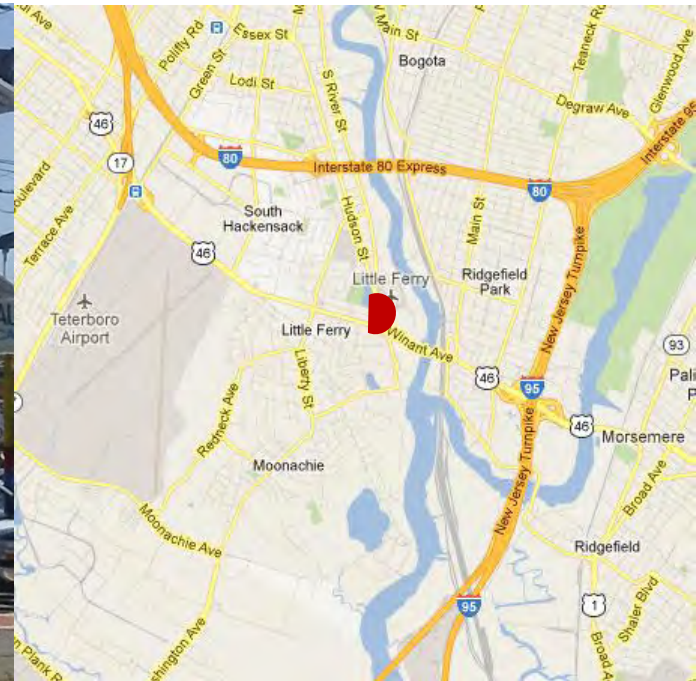
This single sign face is a direct read to traffic heading west on Route 78, at the Route 1 & 9, NJ Turnpike, and McArthur Highway Interchange. The high traffic volume is the result of vehicular only traffic heading to the Newark Liberty International Airport, the busiest airport in the Country. In addition to airport traffic, Interstate Highway 78 is an important East/West route as it leads directly from the Holland Tunnel and Manhattan.

Size: 14 x 48
Media / Style: Permanent Bulletin / Regular
Facing / Read: East/Right
Material: Vinyl
Illuminated: YES

Total 18+ EOI: 216,588

Lat / Long: 40.7119/ -74.1664
Zip: 07114

TAB Unique ID#: 30639034
Look Media ID#: 4373



NEW YORK METRO

Unit 4375: Route 46 East @ Grand Street (Little Ferry, NJ)

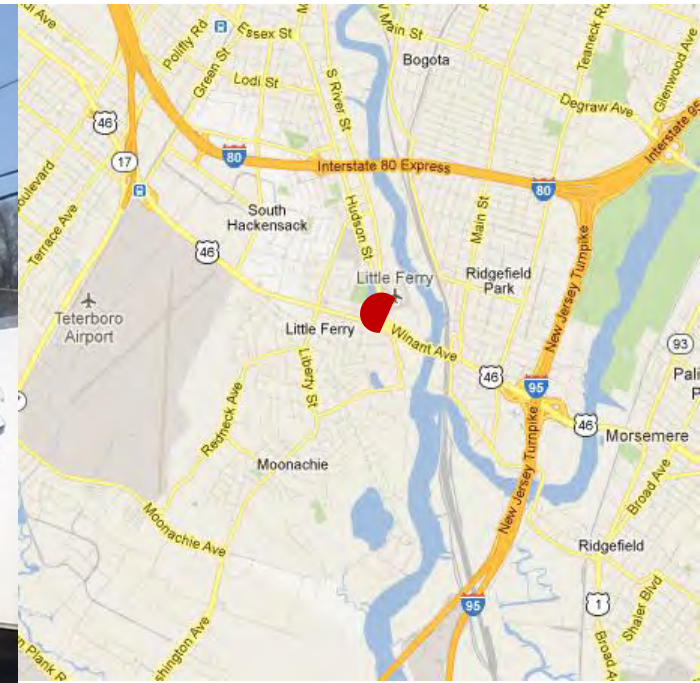
This sign is a left handed read for traffic heading east on Route 46, and is situated between Route 17 and the New Jersey Turnpike. The rooftop sign is visible directly to vehicles for several hundred feet on the approach. Traffic heading to the NJ Turnpike and George Washington Bridge from central and southern Bergen County use Route 46 as a main arterial highway.

Size: 12 x 50
Media / Style: Permanent Bulletin / Regular
Facing / Read: West/Left
Material: Vinyl
Illuminated: YES

Total 18+ EOI: 86,147

Lat / Long: 40.8540 / -74.0389
Zip: 07054

TAB Unique ID#: 30639036
Look Media ID#: 4375



NEW YORK METRO

Unit 4374: Route 46 West @ Grand Street (Little Ferry, NJ)

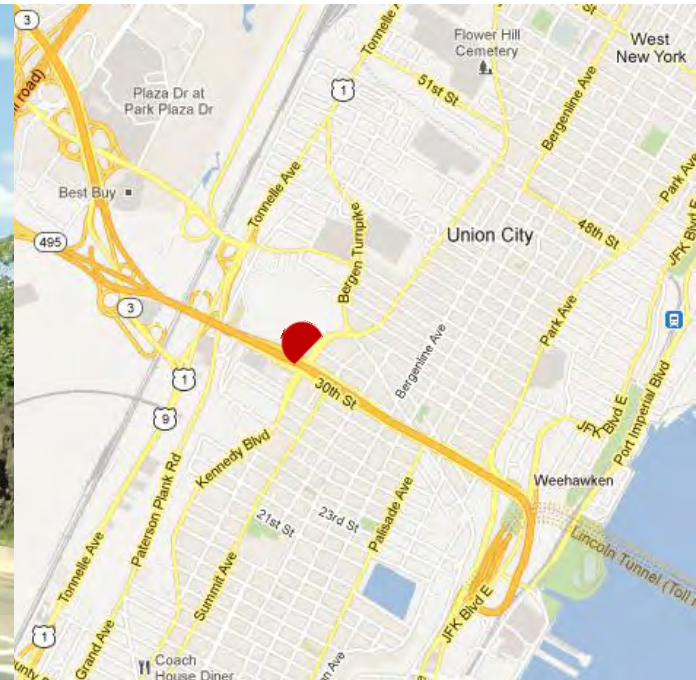
This sign is a right handed read to traffic heading west on Route 46 and is situated between the New Jersey Turnpike and Route 17. The rooftop sign is visible directly to vehicles for several hundred feet on the approach to the sign. Traffic leaving the George Washington Bridge heading westward toward central and southern Bergen County use Route 46 as a main arterial highway.

Size: 12 x 50
Media / Style: Permanent Bulletin / Regular
Facing / Read: East/Right
Material: Vinyl
Illuminated: YES

Total 18+ EOI: 111,784

Lat / Long: 40.8540 / -74.0389
Zip: 07054

TAB Unique ID#: 30639035
Look Media ID#: 4374



NEW YORK METRO

Unit 4378: I-495 & 31st St West @ JFK Blvd. E/O NJ Turnpike (Union City, NJ)

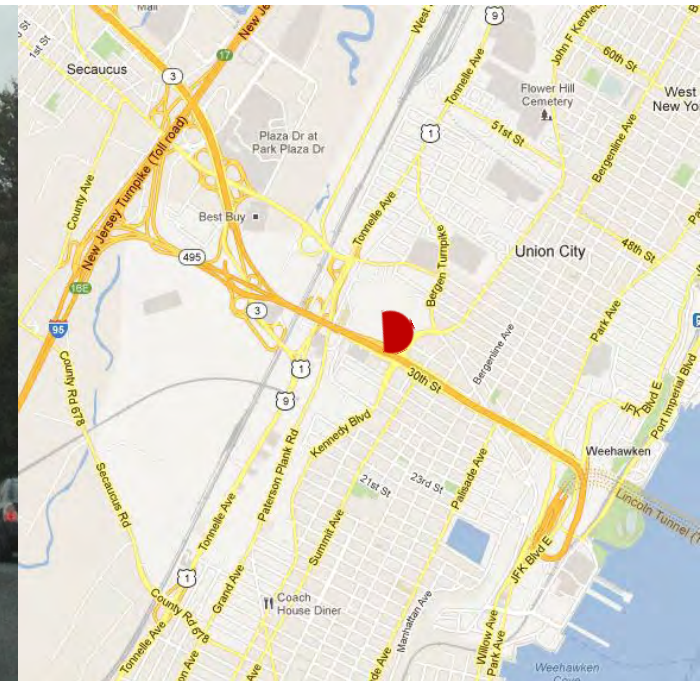
Located 31st Street, about a mile west of the Lincoln Tunnel. This bulletin shows to westbound traffic heading onto Route 495 towards the New Jersey Turnpike, Route 3, US Route 1 & 9 and the Meadowlands Sports Complex. This bulletin has an exceptionally long read providing a very strong impact to the viewer.

Size: 14 x 48
Media / Style: Permanent Bulletin / Regular
Facing / Read: East / Right
Material: Vinyl
Illuminated: YES

Total 18+ EOI: 692,837

Lat / Long: 40.7744 / -74.0354
Zip: 07047

TAB Unique ID#: 30639987
Look Media ID#: 4378



NEW YORK METRO

Unit 4379: 495 East @ JFK Blvd., W/O Lincoln Tunnel (Union City, NJ)

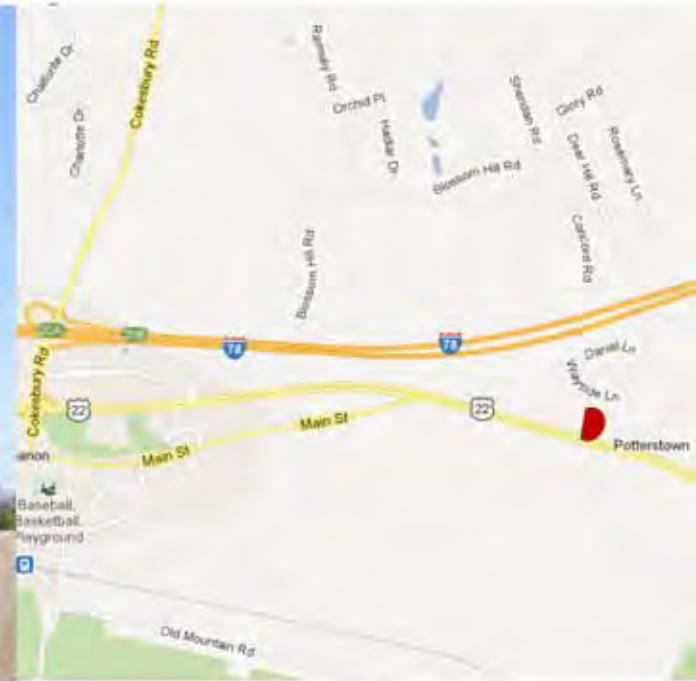
This bulletin is located on one of the most desirable stretches of highway for outdoor advertising in New Jersey: the ramp leading into the Lincoln Tunnel. Carrying some of the heaviest traffic volumes in the state, the Lincoln Tunnel is one of only three routes crossing the Hudson River into New York City. The bulletin faces eastbound traffic from Route 3, the NJ Turnpike, US Route 1 & 9 and local streets heading to midtown Manhattan.

Size: 14 x 48
Media / Style: Permanent Bulletin / Regular
Facing / Read: West / Left
Material: Vinyl
Illuminated: YES

Total 18+ EOI: 325,748

Lat / Long: 40.7744 / -74.0354
Zip: 07047

TAB Unique ID#: 30639988
Look Media ID#: 4379



NEW JERSEY

Unit 4377: Route 22 East, 2 miles E/O I-78, Exit 20 (Hunterdon Co, NJ)

Commuter traffic heading towards New York from PA often uses Route 22 as a less congested alternative that runs parallel to I-78. This is one of the few large-format bulletins along Route 22. Situated in the heart of Hunterdon County, one of the wealthiest areas of New Jersey, the bulletin is also just one mile from the world headquarters of pharmaceutical giant Merck.

Size: 13 x 44
Media / Style: Permanent Bulletin / Regular
Facing / Read: West/Left
Material: Vinyl
Illuminated: YES

Total 18+ EO: 56,634

Lat / Long: 40.6425 / -74.8008
Zip: 08833

TAB Unique ID#: 30639038
Look Media ID#: 4377