

VISION 120 SYSTEM™

PYROSAFE™



VISION 120 SYSTEM

Pyrosafe™ is the AGC family of fire-rated glazing solutions, providing a selection of products to meet the code requirements specific to the application. The Vision 120 System™ is a unique and exclusive 120-minute butt-glazed, transparent wall system. It utilizes Pyrobel® 120 glazing and the Quick-Frame™ system at the perimeter, eliminating all intermediate framing mullions for truly free and open vision.

BENEFITS

- Continuously glazed transparent wall, uninterrupted by intermediate framing
- Unlimited number of glass panels can be glazed into the wall—subject to structural engineering approval
- Perimeter framing will be Quick-Frame with 1-1/2" stop height
- Pyrobel 120 glazing panels available in a maximum size of 43-1/2" x 85" if glazed vertically, or 88" x 40-1/2" if glazed horizontally (glazing cannot be stacked)
- Glass panels are separated by no more than 4 mm of space, glazed according to specifications (see installation guidelines on back of this page)

COMMITTED TO ENVIRONMENTAL STEWARDSHIP

AGC Glass Company is committed to promoting environmental stewardship and sustainable building design. This commitment is evident in product innovations that optimize energy performance and improve natural daylighting. AGC's dedication to environmental responsibility extends to the company's manufacturing processes as well. AGC utilizes recycled, recovered, and reusable materials in its operations, including recycled packaging materials and returnable steel racks. Additionally, AGC's internal recycling program is designed to minimize waste and encourage environmental stewardship among employees.



AGC GLASS COMPANY NORTH AMERICA

www.pyrosafeglass.com
us.agc.com
877.376.3343
info@us.agc.com



VISION 120 SYSTEM™

INSTALLATION GUIDELINES

- Pyrobel® 120 glazing provided with arris cut at butt edge of glass
- Space between glazing not to exceed 4 mm
- Pyrobel must be glazed with 1/8" x 1/2" closed cell foam glazing tape with neutral cure silicone around the perimeter of both sides of glass (perimeter silicone must not be pressure glazed)
- Butt jointed glazing — Pyrobel 120 panes of maximum size 88" high by 40-1/2" wide may be butted together along vertical edges (no framing) using the AGC butt joint system, shown below:

- 10a. Momentive Pensil 300 - A silicone sealant is applied to fill the butt joint gap between the glazing panes and finished flush.
- 10b. Superwool paper X607 - Superwool paper with self-adhesive tape on one face. A strip is adhered along the full height of each glazing pane edge at the butt joints only, set central to the glazing panes thickness. 4 mm x 3 mm thick (uncompressed).
- 10c. Kerafix FXL 200 - Intumescent with self-adhesive tape of one face. A strip is adhered along the full height of each glazing pane edge at the butt joints only, positioned each side of item 2 (set 15 mm from the exposed and unexposed face of the glass). 10 mm x 2 mm thick.
- 10d. Fire Resistant Glazing Material*-Pyrobel 120.
*Bearing the UL Classification Mark

For additional BIM and CAD details, and CSI specifications, please view or download online at www.pyrosafeglass.com



Fire-Rated



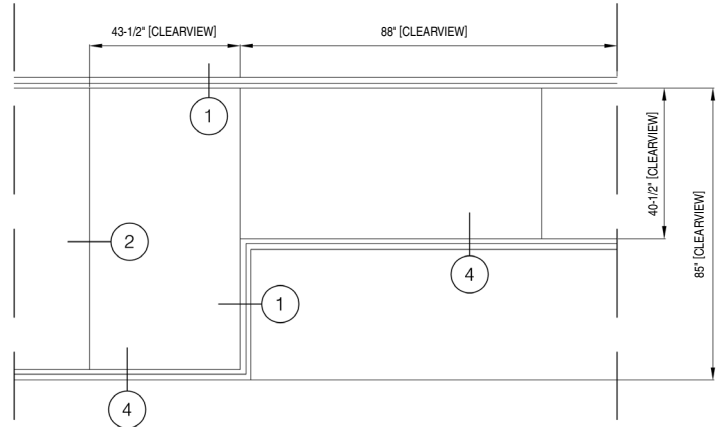
Impact Safety



Hose Stream

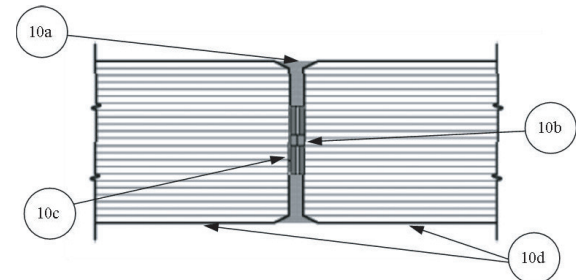


Radiant Heat

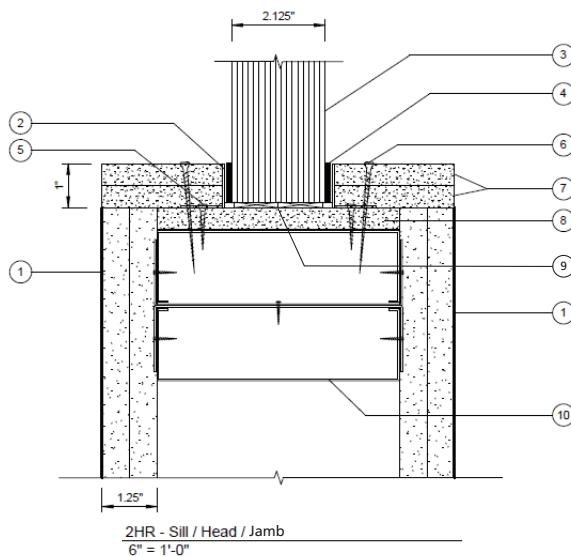


Elevation

Vision 120 System



2 Vertical Joint Vision 120 System



QUICK-FRAME 2-HOUR WALL	
#	DESCRIPTION
1	TWO LAYERS OF 5/8" [15.87 MM] THICK TYPE X OR TYPE C GYPSUM BOARD.
2	1" [25.4 MM] X 1-1/2" [38.1 MM] MINIMUM X 18 GAUGE [0.048"/1.21 MM] STEEL ANGLE STOPS [MUST BE CONTINUOUS].
3	NOMINAL 2" [50.8 MM] THICK PYROBEL 120-52 GLAZING PANEL.
4	1/8" [3.17 MM] THICK X 1/2" [12.7 MM] WIDE CLOSED CELL FOAM TAPE [APPLIED ON BOTH FACES].
5	NO. 6 1" [25.4 MM] LONG TEK SCREWS, 2" [50.8 MM] FROM EACH END AND 12" [304.8 MM] ON CENTER MAXIMUM.
6	2-1/2" [63.5 MM] LONG DRYWALL SCREWS, 2" [50.8 MM] FROM EACH END AND 8" [203.2 MM] ON CENTER MAXIMUM.
7	TWO LAYERS OF 1/2" [12.7 MM] THICK TYPE X OR TYPE C GYPSUM BOARD.
8	ONE LAYER OF 1/2" [12.7 MM] THICK TYPE X OR TYPE C GYPSUM BOARD.
9	3" [76.2 MM] LONG X 2-1/8" [53.98 MM] WIDE X 1/4" [6.35 MM] HIGH CALCIUM SILICATE SETTING BLOCKS AT QUARTER POINTS BENEATH THE BOTTOM EDGE OF GLAZING.
10	NOMINAL 5-5/8" [142.87 MM] WIDE, 20 GAUGE [0.52"/1.32 MM MATERIAL THICKNESS] COLD ROLLED STEEL C STUDS AND TRACK.

AGC

BEYOND GLASS™

AGC GLASS COMPANY NORTH AMERICA

©2013 AGC Glass Company North America, Inc. All rights reserved. Vision 120 is a registered trademark of AGC Glass Company Europe. Printed in USA. Consult with the local authority having jurisdiction (AHJ) before specifying or purchasing any product for your project.

Reference: #121813

www.pyrosafeglass.com

us.agc.com

877.376.3343

info@us.agc.com



BUILDING