



October 24-26, 2014  
Register today!

# 2014 Spook-O-Ree Leader's Guide

Please take a few minutes to read this guide carefully. We value your input and thank you for your service to our Scouts. If you have any questions, please email the Event Chair. Yours in Scouting,  
Debra Lanham dhlanh24@aol.com (Spook o Ree Chair)

## WELCOME

All Cub Scout Packs and their families are invited. This is a great Cub Scouting experience, as Scouts have fun in a variety of activities such as a BB range, Fishing, Haunted Carnival, and much more!

## WHAT'S NEW!!!

We plan to have several things that are different this year at Spook-O-Ree. Please see the bullet points below:

- **We will collect food for the local food banks (we ask every person attending to bring one can of food and donate any left over can goods after the event)**
- Campsite decorating contest to occur
- Movie night on Friday after dark in the amphitheatre
- Trick or Treat will be at the Campfire every family is asked to bring one bag of candy to share
- Programs to include: Haunted House, Haunted Trails both Scary and Non-Scary, Carnival and an old fashioned Hay Ride.
- Webelos will have a chance to work on advancement and earn two Webelos Activity Pins. (Readyman and Forester)
- Family Flyers included in this packet
- If using any wheeled device i.e. scooter please remember all terrain tires are best.

## INTRODUCTION

This booklet contains the information your Pack will require to have a successful and fun time at this year's event. **Be sure to read all the information carefully** as we expect all participants to act in accordance with the best of our Scouting traditions. We have written this booklet to be readable and easy to follow, but if you have any questions about anything written here, please feel free to contact us at the emails at the top. The Spook-O-Ree will be held at the Robert E. Knox Scout Reservation located in Lincolnton, GA. The directions and map to the site are included at the end of this booklet. The schedule of events is also included and we will follow it as closely as we possibly can. This event will place an emphasis on the Scouts acting within the best ideals of Scouting -- "Do Your Best". We expect Den Leaders and parents to supervise their Scouts and maintain safety and discipline at all times.

**Early  
Registration  
and fees due in  
the Scout  
office no later  
than  
October 3rd  
by 4:00 p.m.**

### Inside this issue:

Welcome	1
Introduction	1
Pack Coordinator	1
Registration	2
Forms Information	2
Camping	2
Check-In	3
Vehicles in Camp	3
Meals	3
FAQ's	4
Schedule of Events	5
Trick or Treating	6
Campsites	6
Check Out	6
T-Shirts	6
What to wear	6
Family Flyer	7
Family Registration Form	8
Pack Roster Form	9
Staff Registration Form	10
Skit or Song Registration	11
Directions to KSR/Rules	12/13

## PACK COORDINATOR

The Pack Coordinator must generate a pack roster (form enclosed) and submit it with all the fees. Packs need to select a pack coordinator and identify this person to the Event Chair in **email by September 26**. If a pack does not submit a name to the council, we will use the primary pack contact as the Pack Coordinator. The Pack Coordinator will be the main conduit for communication from the council to the pack. We will distribute detailed program information to the pack coordinators via email. Please ensure your Pack Coordinators include an email address for our event email list for this event.

## REGISTRATION

### EARLY BIRD REGISTRATION:

Due to the Council office by 4:00 pm on Friday, Oct. 3.

\$16/person (Scouts, Siblings & Adults)

\$12/Additional Scouts

Children 5 and under are **FREE!**

### LATE REGISTRATION:

No registrations will be accepted after 4:00 pm on Thursday, Oct. 17. Packs or individuals registering late will **NOT** receive patches or water bottles.

\$22/person (Scouts, Siblings, & Adults)

\$17/Additional Scouts

Children 5 and under are **FREE!**

**Medical Forms MUST be turned in upon checking in on the day of the event. Your unit will NOT be able to participate without the medical forms.**

**At registration you must turn in the following:**

Pack Roster Form  
ALL Family Reg. Forms  
Staff Roster Form  
Payment

**The following must be turned in on the day of the event:**

Medical Forms  
Skit/Song Registration

## FORMS

### FAMILY REGISTRATION FORMS

Each family should complete a family registration form. They need to submit this form to the Pack Coordinator. This form includes the Permission Form mentioned below.

### PERMISSION FORMS

No Scout will be allowed to participate in the Spook-O-Ree without a properly signed permission form. The permission form is located at the bottom of the Family Registration Form and needs to be signed by either parents or legal guardians.

### MEDICAL FORMS

All participants (scouts, adults, and siblings) must submit an Annual

Health & Medical form. This form can be located on the council website – [www.gacacouncil.org](http://www.gacacouncil.org). The Pack Coordinator will need to submit everyone's forms upon checking the pack in on the day of the event. Wristbands and other items will not be issued until all forms are received. Please have everyone complete the form **before** arriving at camp. If you do not have a medical form, you will not be able to participate in the event.

### PACK ROSTER FORM

This form is a summary of the families attending, number of Scouts in each rank, and summary of t-shirts that need to be ordered for your unit. This should be submitted by the Pack Coordinator to the Council.

**You can find all forms online where you can fill them out...**

Medical Forms:  
[www.gacacouncil.org/forms](http://www.gacacouncil.org/forms)

### SKIT REGISTRATION FORM

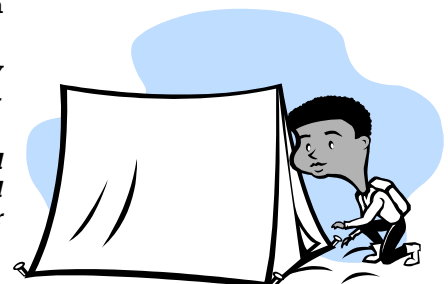
If you are interested in performing a skit or song at the campfire, please submit this form. Skits are not required, but they are highly encouraged and makes for a more interesting campfire.

Camping on Friday and/or Saturday night is highly encouraged, but it is optional. There is no additional charge for camping. PLEASE indicate on your pack's registration the number of campers for each night. We will assign campsites based on those numbers. The style of camping is Family camping on both nights. There will be a campfire program for those that are camping on Saturday night.

*Pack Coordinators and other Pack leaders will be allowed to set up camp on Thursday evening, if interested. This will enable leaders to help other families and monitor children Friday evening. Please contact event chair if you plan to do this to find out more.*

**\* A limited amount of electrical outlets are available per campsite, electricity will be reserved for those only with medical needs. If you have such a need you will camp in a designated area near the pavilion, those persons will be responsible for their own extension cords.**

## CAMPING



## CHECK-IN

Check-in will start Friday afternoon at **5:00 P.M.**; please do not arrive prior to this time. If you arrive prior to 5:00 P.M. on Friday you will be asked to wait in the parking area. **Check in will be done by the Pack Coordinator at the Admin building.** The following information must be submitted by the Pack Coordinator or designee:

- Skit Registration Form (optional)
- Any changes to the original roster submitted with registration fee
- Medical forms for ALL attendees
- Any other missing information from registration

After the pack has been checked in, the pack coordinator will receive all of his units t-shirts, water bottles, and wristbands. He or she will also receive a schedule of events, map of the activities, a BB & Archery schedule and any other information your unit may need for the event. Each participating family needs to check in with their Pack Coordinator. In an effort to ensure the safety of scouts and their families, we are requiring wristbands to be worn by all attendees during this event. The wristbands will be colored based on the area where you are camping. If a child becomes lost, we will be able to get him/her to the right place faster. We will also be able to ensure that only registered adults are

in the camp. This extra level of security will provide a safer environment for scouting. The boys will need to have a wristband to participate in the events. Your wristband will also designate your eating pavilion for lunch on Saturday.

Registered Families will be able to check in as they enter Knox to determine their campsite and will receive a schedule and a map. Please be prepared to turn in your bag of Candy as you arrive.

LEADERS interested in setting up their campsite Thursday evening or Friday morning need to contact the event chair for more information.

## VEHICLES IN CAMP

**(PLEASE READ THIS SECTION CAREFULLY)**

### **BSA rules prohibit vehicles in camp.**

Vehicles pose a safety issue and detracts from the outdoor experience. **This year, ONLY medically exempt vehicles will be allowed in campsites after a review of the medical need.** **TRAILERS:** If your unit or someone in your unit has a trailer, the trailer may be driven to the campsite, detached from your vehicle and left at the campsite. Trailers may be dropped between 4pm on Thursday until 4pm Friday. If you do not have a trailer for your unit, when you get to camp you will need to park your vehicle in the parking area. Please go to the tent near parking and let staff know you need a trailer to get your camping gear. We will have a trailer available to load your gear and take it to your campsite. We cannot be responsible for damaged gear. Please help the staff members load your things. Only official & medically exempt vehicles will be allowed in the camping area after check-in, if you are camping Friday night, but not Saturday, please get your gear out of the camping area Saturday morning before Opening Ceremony. Please pass this information to all of your parents.

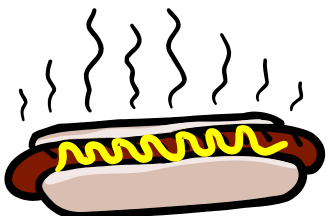
### Trailer Schedule:

Thurs. 4pm–Friday 4pm (unassisted)  
 Friday 4:30pm (Camp towed individual trailers)  
 Friday 4:00 pm (unit trailers permit issued)  
 Saturday 4:30pm (Camp towed)  
 Sunday 8:30am (Camp towed individual and unit trailers plus gear)

### **BSA rules prohibit vehicles in camp.**

## MEALS

Lunch is included in the program fee; the meal will consist of **two all beef hotdogs**, a piece of fruit, chips, and a drink. If you have someone in your pack with dietary or religious reasons they cannot eat this menu, please let us know and we will attempt to accommodate those needs on a case by case basis. We are only preparing one portion per person. Persons requiring additional quantities should consider bringing additional food with them. Remember, all other meals are NOT included and are your responsibility.



**Water bottles will be provided to every scout in attendance. Everyone else will need to bring a cup or water bottle with them.**

We will be eating around the Sewell Center picnic style at lunch time.



## Frequently Asked Questions

**Q:** If this program is designed around the dens, what is the role of the Cubmaster or Pack Representative?

**A:** Their role is to coordinate their dens' registration, coordinate with the Event Chairs, and ensure our Scouts and families have fun!

**Q:** Do boys entering the first grade have to be accompanied by a parent or an adult partner for the entire event?

**A:** Yes. This is compliance with the Council and BSA's policies.

**Q:** What if I do not want to camp?

**A:** The program runs from 9:15 am to 4:30pm on Saturday. Camping is encouraged, but not required. Camp on Friday or Saturday night or both at no additional cost! If you do not camp on Friday night, please arrive at Camp *no later than* 8 AM on Saturday as the Check In Station will close at 8:30 am.

**Q:** What if a family changed their mind and wants to attend after the Pack submitted the Pack's registration?

**A:** If it is after **October 3, 2014**, contact the Event Chair immediately. Then, take the registration along with late fees to the Council office. Late registration is \$22 per person and each additional Scout in a family is \$17.

**Q:** Are there camp T-shirts for sale?

**A:** Yes. They are \$10/each. ***They are only available with Early Bird Registration!***

**Q:** Will I be able to drive to my campsite?

**A:** Unfortunately no, BSA policy prohibits vehicles in camp with the exceptions of medically exempt and official service vehicles. Please see page 3 of this guide for further information.

If you have any questions after reading this guide, please bring them to the attention of the Event Chair: Debra Lanham [dlanham24@aol.com](mailto:dlanham24@aol.com)

# Schedule of Events

DRAFT

Friday	Time	Responsible	Location/Notes
Arrive	4:00-7:00	Pack Coordinator	
Check-In	6:00-8:30	Pack Coordinator	Admin Building
Movie Night- "Down & Derby"	7:00 (Dark)		Amphitheater
Leader's Meeting	9:00	Pack Coordinator/CM	Admin Building
Lights Out	10:00	Pack Coordinator	
Saturday	Time	Responsible	Location/Notes
Breakfast	7:00-8:30	On Own	Before Arrival/Campsites
Check-In	7:30-8:30	Pack Coordinator	Admin Building
Opening Ceremony	9:00-9:15	Event Chair	Assembly Field (flag poles)
Activities	9:15-4:00	Each pack/troop needs to provide one parent to assist.	Parents help at stations while rotating with their cubs.
Lunch (provided)	11:30-1:30		Designated Pavilions
Check-out	4:30-5:00	For Scout's not camping Saturday Night	Do not try to check-out any later as there will not be anyone in Admin to help you.
Dinner & Skit Prep (if you are camping Sat.)	4:00-6:00	Pack Coordinator	Every Pack should come up with one skit or song for the campfire.
Campfire program	6:30-7:30		Amphitheater (Scouts may wear costumes)
Haunted Programs	7:30-9:30	Staff	Various locations (see guide)
Lights Out	10:00	Pack Coordinator	
Sunday	Time	Responsible	Location/Notes
Breakfast	7:00-8:00	On Own	Campsites
Scout's Own Service	8:00-8:30		Amphitheater <b>NO TRAILERS WILL OR CAN RUN UNTIL AFTER "Scout's Own"</b>
Camp Cleanup & Check Out	8:45-10:00	Pack Coordinators	Camp trailers running and unit trailers retrieved
Depart	no later than 10:00	All	

## T-SHIRTS, PATCHES & WATER BOTTLES

**You have the opportunity to order t-shirts for \$10 each if you order before October 3<sup>rd</sup>.** T-shirts will have the event logo on the front. Every paid Scout will receive a patch with the event logo. Every paid participant will receive a water bottle with the event logo on it. T-shirts and water bottles will be issued during check-in. We will have containers of water throughout the event and during lunch. **We will NOT provide cups** but every Scout that registers before Oct. 3 will receive a water bottle. Patches will be provided during checkout. For packs that are not camping, check out will be after the activities at 4:30pm. For packs that are camping, your patches will be provided **AFTER** the Pack's campsite has been cleaned, all trash removed, and the site is inspected by a member of the staff. Leave No Trace will be in full force for the event.

## WHAT TO WEAR

The boys should participate in a Scout uniform or Scout T-shirt. Class A uniforms or Costumes should be worn to the campfire.



## HAUNTED ACTIVITIES

The **HAUNTED HOUSE, HAUNTED TRAILS, HAYRIDES, and CARNIVAL** Will be Saturday Evening. Each family is asked to provide one bag of candy (30+ pieces). (Turn in as you arrive at Knox)

## CAMPSITES

Campsites will be numbered and marked with stakes. Please do not let the boys mess with these stakes. If anything falls off of the stake, please give it to a staff member. These stakes are used every year and they make it easier for you to find where you are supposed to be camping. Please do not place your

tent in front of the stake or cover the stake in any way. If you cover the sign in any way, it will make it harder for other campers and staff members to find the correct campsite. Please remember that some areas need to accommodate large numbers of campers. Please arrange

tents in a manner that will allow all the campers to fit. Start at the back of the campsite and work your way up.

You are also invited to decorate your campsite with a Halloween theme. Be creative, but safe. We will judge campsites Saturday afternoon.

## CHECK-OUT

### For Packs that are:

NOT camping OR ONLY camping Friday

Camping Fri and Sat OR ONLY Sat

### Check-out is at:

Saturday, 7:30-8:30am (take gear to your vehicle)  
4:30-5:00pm (check-out)

Sunday, 8:45-10:00am (if you need to leave earlier than this please let staff know on Saturday, you will need to carry your gear)



At check-out, your unit will receive all Medical forms and patches for your group. We will be enforcing the **Leave No Trace** guidelines, so the Pack Coordinator will need to be sure the Campsite Host (assigned to you at check-in) clears your site before checking-out. This means that all fires must be extinguished according to BSA guidelines, all trash removed, and everything back in its place. You may put any bags of trash under the Pavilion.

**Remember, only vehicles allowed in camp are official service or medically exempt !**

# FAMILY FLYER

## SPOOK-O-REE

October 24-26 at Robert E. Knox Scout Reservation

Cost—\$16 per person, \$12 additional Scouts, Free for siblings under 5

T-shirts are \$10.00 each and **must be ordered before Oct 3.**

### Meals

Fri supper—on your own

Sat breakfast—on your own or with your pack

Sat lunch—provided by Spook-o-ree

Sat Supper—on your own or with your pack

Sunday breakfast—on your own or with your pack

**SNACKS**—you need to bring your own drinks and snacks for the weekend Spook-O-ree will provide water bottles for all paid participants.

**SHOES**—you will be doing LOTS of walking. Bring comfortable shoes (shoes must be closed-toed, no flip flops or open toe sandals )

**FISHING**—is a possibility so bring your gear if you have some.

**Don't forget your costume**

**Each family please have a bag of candy to turn in at the gate when you enter Knox .**

**Also we are asking for one can of food per person for the local food bank.**

**OTHER NECESSITIES**—The following is a sample list. You do not HAVE to have all of this, it is just a suggestion.

- Tent (please no oversized tents)
- First Aid Kit
- Sleeping Bags
- Pocket Knife
- Rope & clothes pins
- Tape
- Ground Sheet
- Insect Repellent
- Folding table & chairs
- Sewing Kit
- Shovel
- Cooler
- Rain coat
- Broom
- Lantern
- Fishing gear
- Air Mattress
- Pail
- Water Jug
- Wash basin
- Fire Extinguisher
- Waterproof tarp
- Matches
- Flashlights
- Hammer
- Electrical Extension Cord
- Camp Stove
- Storage containers
- pots & pans & dishes & cups
- Mirror
- Fire starter
- Aluminum Foil
- Stuff to handle food with and eat with
- Detergent
- Pot holders
- Paper towels
- Water Container
- Garbage bags

# Family Registration Form

## Early Bird Registration Deadline—10/3/2014

## Late Registration Deadline—10/17/2014

**PLEASE BE SURE TO COMPLETELY FILL OUT THIS FORM. MISSING INFORMATION MAY DELAY YOUR PACK WHEN CHECKING IN AT THE EVENT.**

Pack # \_\_\_\_\_ Last Name \_\_\_\_\_

Family Address \_\_\_\_\_ Phone # \_\_\_\_\_

Email \_\_\_\_\_

<b>ADULT(S) &amp; SIBLINGS OVER 5- Please indicate if you are staff</b>			<b>CAMPING</b>		<b>T-SHIRTS -\$10/ea</b>	
Name	Relationship to Scout	Paid EARLY/LATE	Friday? Circle one	Saturday? Circle one	Size	Paid
		\$16/\$22	Yes/No	Yes/No		
		\$16/\$22	Yes/No	Yes/No		
		\$16/\$22	Yes/No	Yes/No		
		\$16/\$22	Yes/No	Yes/No		
<b>SCOUT(S)</b>			<b>CAMPING</b>		<b>T-SHIRTS -\$10/ea</b>	
Name	Rank (Tiger, Wolf, etc)	Paid EARLY/LATE	Friday? Circle one	Saturday? Circle one	Size	Paid
		\$16/\$22	Yes/No	Yes/No		
		\$16/\$22	Yes/No	Yes/No		
		\$16/\$22	Yes/No	Yes/No		
		\$16/\$22	Yes/No	Yes/No		
<b>SIBLING(S) 5 &amp; UNDER</b>			<b>CAMPING</b>		<b>T-SHIRTS \$10/ea</b>	
Name	Age	Paid EARLY/LATE	Friday? Circle one	Saturday? Circle one	Size	Paid
		\$0	Yes/No	Yes/No		
		\$0	Yes/No	Yes/No		
		\$0	Yes/No	Yes/No		
		\$0	Yes/No	Yes/No		
	<b>TOTALS</b>	\$	#	#		\$

I understand that participation in the Fall Spook-O-Ree offered through the Georgia Carolina Council, Boy Scouts of America, involves a certain degree of risk. I have carefully considered the risk involved and have given the above mentioned persons my consent to participate in this program from October 24, 2014 to October 26, 2014.

**Print Name**

**Sign Name**

**Date**

\_\_\_\_\_

\_\_\_\_\_

\_\_\_\_\_



## Pack Roster Form

**Early Bird Registration Deadline—10/03/2014**

**Late Registration Deadline—10/14/2014**

**PLEASE BE SURE TO COMPLETELY FILL OUT THIS FORM. MISSING INFORMATION MAY DELAY YOUR PACK WHEN CHECKING IN AT THE EVENT OR RESULT IN AN INACCURATE COUNT OF PEOPLE OR T-SHIRTS. If additional space is needed, please copy this form. If you would like an electronic version to use, email the Event Chair. Please do not make your own version of this form.**

*Pack Coordinators can also register online through the Council Website.*

	Family Name	# Adults	# Scouts	#Sib (<5)	#Sib (≥5)	#Camping Friday	#Camping Saturday	#Shirts ordered	Amount Paid \$
1									
2									
3									
4									
5									
6									
7									
8									
9									
10									
11									
12									
13									
14									
15									
16									
17									
18									
19									
20									
	<b>TOTALS</b>								\$

**Total number of Scouts in each rank**

**Tiger \_\_\_\_\_ Wolf \_\_\_\_\_ Bear \_\_\_\_\_ Webelos \_\_\_\_\_**

**Pack T-shirt Order**

Please indicate TOTAL number of t-shirts in each size

**\_\_\_\_\_ YS \_\_\_\_\_ YM \_\_\_\_\_ YL \_\_\_\_\_ AS \_\_\_\_\_ AM \_\_\_\_\_ AL \_\_\_\_\_ AXL \_\_\_\_\_ AXXL**

**Total # of t-shirts \_\_\_\_\_ x \$10 each = \$ \_\_\_\_\_**

## STAFF Roster Form

**PLEASE BE SURE TO COMPLETELY FILL OUT THIS FORM. Please do not make your own version of this form.**

*Leaders: It is very important that your youth staff be mature enough to support the program and not be a distraction.*

Unit # \_\_\_\_\_ Unit Coordinator \_\_\_\_\_

	Name	Adult (√)	Scout (√)	Shirt size	Area volunteering
1					
2					
3					
4					
5					
6					
7					
8					
9					
10					
11					
12					
13					
14					
15					
16					
17					
18					
19					
20					
	<b>TOTALS</b>				

### Staff T-shirt Order

Please indicate **TOTAL** number of t-shirts in each size

\_\_\_ YL    \_\_\_ AS    \_\_\_ AM    \_\_\_ AL    \_\_\_ AXL    \_\_\_ A2XL    \_\_\_ A3XL

**Total # of t-shirts** \_\_\_\_\_

**STAFF MUST be registered by OCT 3 in order to be guaranteed a shirt.**

# Skit or Song Registration Form

Please turn in this form with registration or no later than 4:30 at Admin on October 25, 2014.

Pack # \_\_\_\_\_ Den # \_\_\_\_\_

Rank (Circle one): Tiger Wolf Bear  
Webelos Pack skit

We would like to present the following at the campfire program on Saturday night.

Skit Name \_\_\_\_\_

Short description: \_\_\_\_\_

\_\_\_\_\_

Song Name \_\_\_\_\_

The Event Chair will review all skit and song requests and attempt to incorporate all of the skits into the campfire program.

The Event Chair reserves the right to approve or disapprove skits and songs without appeal.

## Directions to Robert E. Knox Scout Reservation

1150 Fred R. Prater Parkway

Lincolnton, GA 30817

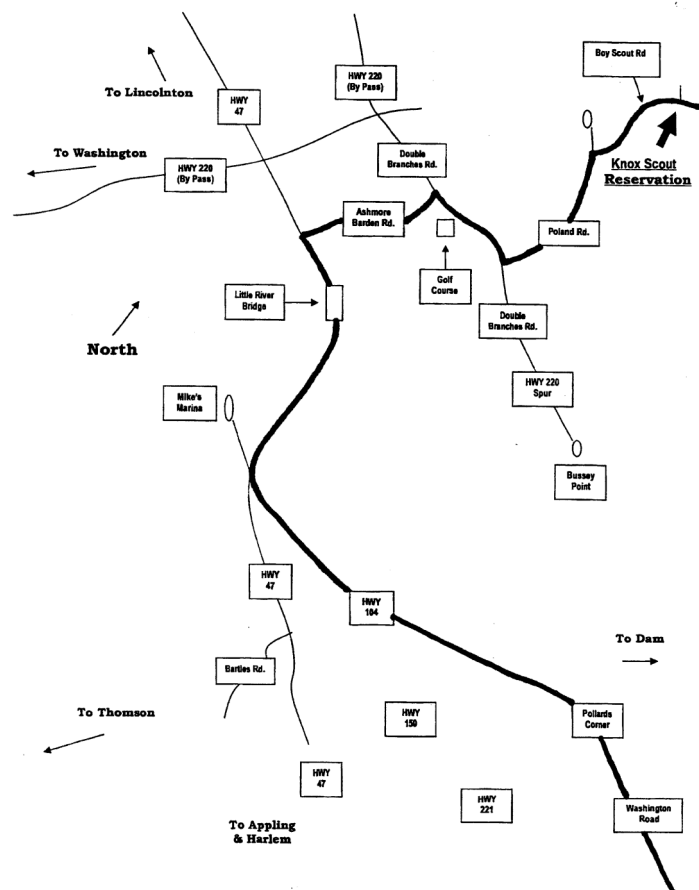
Emergency Contact at KSR (706) 359-5422

### FROM AIKEN / COLUMBIA

1. Go west on I-20. In Georgia take Exit 194, (Belair Road / Dyess Parkway / Highway 383)
2. Turn right at the top of the off ramp. Continue on Belair Road for – 4 miles.
3. Turn left onto Washington Road (104 West).
4. Travel 9.7 miles to Pollards Corner; flashing red lights / 4-way stop (Chevron Gas Station and Maryland Fried Chicken at intersection).
5. Continue straight through intersection (104 West becomes West 47) for – 9 miles.
6. Watch for signs to Bussey Point Recreation Area (brown sign) and Knox Scout Reservation (green sign) on the right.
7. Turn right onto Ashmore-Barden Road.
8. Go to the end of Ashmore-Barden Road – 2.9 miles. Turn right at stop sign.
9. Go 1.3 miles (past golf course). Watch for Mulberry C.M.E. Church on right. Road curves to right. Look for green Knox Scout Reservation Sign on right.
10. Turn left onto Poland Road. Go 0.7 miles.
11. Turn right at Camp Entrance (Fred R. Prater Parkway).
12. Stay on main paved road in camp. Follow the signs.

### FROM AUGUSTA / ATLANTA

1. Take I-20 to Exit 196-B (I-520 Bobby Jones Expressway).
2. Stay on Bobby Jones through 3 Stop Lights (past Sams Club, and Wal-Mart).
3. At next Stop Light turn left onto Washington Road (104 West).
4. Travel approximately 13 miles to pollards Corner; flashing red lights / 4-way stop (Chevron Gas Station and Maryland Fried Chicken at intersection).
5. Continue straight through intersection (104 West becomes West 47) for – 9 miles.
6. Watch for signs to Bussey Point Recreation Area (brown sign) and Knox Scout Reservation (green sign) on the right.
7. Turn right onto Ashmore-Barden Road.
8. Go to the end of Ashmore-Barden Road – 2.9 miles. Turn right at stop sign.
9. Go 1.3 miles (past golf course). Watch for Mulberry C.M.E. Church on right. Road curves to right. Look for green Knox Scout Reservation Sign on right.
10. Turn left onto Poland Road. Go 0.7 miles.
11. Turn right at Camp Entrance (Fred R. Prater Parkway).
12. Stay on main paved road in camp. Follow the signs.



## **Robert E. Knox Scout Reservation Rules – Revised 6/1/2010**

**Rules are made for the safety of participants, protection of the facility, and to provide fairness to all. Please notify all participants of the following:**

No firearms, bows and arrows, or ammunition of any kind may be kept in the possession of any Scout or Scouter. No axes are permitted or needed. Hatchets may be used by Boy Scouts or Adult Leaders only. No fireworks of any kind are permitted on camp property. No fixed blade, sheath or other survival knives are permitted. Folding or pocket knives are permitted by those scouts that have earned their Whittlin' Chip.

The speed limit for vehicles is 3MPH (walking speed). One person per seatbelt and they must be worn. No riding in truck beds. No motor-homes, RV's, campers or generators.

No alcoholic beverages or unlawful drugs are permitted on camp property. Tobacco use permitted only in designated areas (a designated area will be provided at check in). BSA guidelines require a smoke-free environment for our scouts. If you must smoke, please do so out of sight of youth participants and not inside any buildings. Please "field dress" your butts and dispose of them properly remembering the ever present danger of forest fires.

Closed toe shoes must be worn in camp at all times. Walk, do not run, within your campsite. Remember tent stakes and tie downs. The Scout uniform, correctly worn, is the most proper dress.

Anyone leaving the event must sign out at the Admin Bldg and must sign back in upon return.

A Pack must have Pack leadership at all times during the event. The Buddy System should be used at all times.

Pets are not allowed at camp. Please, for the safety of other campers and the pet, leave them at home.

Leave No Trace guidelines are to be followed. Trash your trash. Leave nothing but footprints, take nothing but pictures.

Camp and Lake: Follow BSA guidelines for camping. Stay out of the lake. No water craft/swimming permitted.

No Electronic devices or bikes are to be brought into camp. Parents only may carry cell phones or two-way radios. A radio channel will be designated for announcements.

Stoves and Lanterns: Follow BSA regulations according to fuels. Keep open flames out of and away from tents.

FIRES WILL BE ALLOWED IN DESIGNATED FIRE CIRCLES ONLY. Do not cut trees. Bring your firewood, charcoal or collect dead wood from the ground. No pit/trench fires, use the rings provided. Never leave a fire unattended, especially when going to bed. All fires should be extinguished according to BSA guidelines.

Rocks and Sticks: Although tempting, rocks must not be thrown or kicked and sticks may not be swung. Injury/damage to property usually results from this action. Such actions will result in you being asked to leave the campout immediately. Adult Leaders please help monitor your boys.

First Aid: The Health Lodge will be manned during the event. Medical Emergencies should be directed through Admin during other hours. Minor first aid should be handled at the campsite if you have supplies. Medications for all Scouts and Scouters will be kept at the Health Lodge and administered by the Health Officer.