



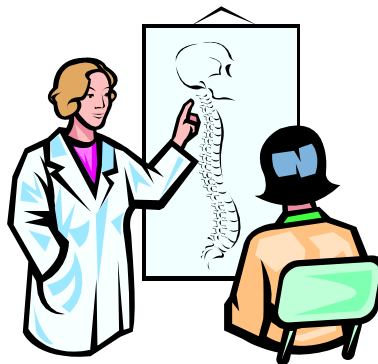
Do you have MS?
Are you interested in research?
The MS Center at EvergreenHealth is now enrolling for MS-BMD - a trial to study the possible effects of disease modifying therapies on bone density in patients with Multiple Sclerosis.

The MS-BMD trial will measure bone density changes in patients treated with Gilenya™ versus other FDA approved MS therapies or no therapy. This trial will last about 2 years and include at least 6 visits to our clinic.

To qualify for this study, you must:

- Have a confirmed diagnosis of relapsing remitting or secondary progressive MS
- Be at least 21 years old
- Currently be taking Gilenya™ or other FDA approved MS therapy or no MS therapy
- Be willing to follow guidelines for Gilenya™ use or other MS therapy use
- Be willing and able to take calcium and vitamin D supplements
- Be able to give written consent to participate in this trial

If you have questions or would like more information on this study, please contact research coordinator at 425-899-5374 or 425-899-5369. Find info online at www.clinicaltrials.gov and www.evergreenhealth.com (search "MS clinical trials").



MS-BMD Research Study
 MS Center at Evergreen
 Phone: 425-899-5374 or
 425-899-5369

MS-BMD Research Study
 MS Center at Evergreen
 Phone: 425-5374 or
 425-899-5369

MS-BMD Research Study
 MS Center at Evergreen
 Phone: 425-5374 or
 425-899-5369

MS-BMD Research Study
 MS Center at Evergreen
 Phone: 425-899-5374 or
 425-899-5369

MS-BMD Research Study
 MS Center at Evergreen
 Phone: 425-899-5374 or
 425-899-5369

MS-BMD Research Study
 MS Center at Evergreen
 Phone: 425-899-5374 or
 425-899-5369

MS-BMD Research Study
 MS Center at Evergreen
 Phone: 425-899-5374 or
 425-899-5369