



park*lane
JEWELRY | SINCE 1995
FOR
ERED
CARPET

ABOVE & BEYOND

PARK LANE FOR E! LIVE FROM THE RED CARPET

Revitalize yourself with more glamour and elegance. The latest Park Lane for E! Live From the Red Carpet collection combines modern luxury with unapologetic confidence. Each unique piece was hand selected by Hollywood's most stylish critics. Created especially for you, Park Lane for E! Live from the Red Carpet jewelry takes the guess work out of completing your fabulous look to stand out among the crowd.



FEATURED ON COVER

INTENSE NECKLACE - #20068 \$260

Unique, brushed silver faceted acrylic pendants and two bold filigree oval accents fashion a spectacular cascade necklace guaranteed to wow the crowd! (18"+3")





SUNSET & VINE COLLECTION

BRING OUT YOUR GLAM TONIGHT WITH THIS SINFULLY DELICIOUS SPARKLE



BEL-AIR NECKLACE - #20071 \$195

Adorn your neckline with this chic mix of three necklace layers in one. A flexible hematite coil, a strand of faceted jet gems and a hematite link chain join to make a glamorous statement necklace. (14 1/2" + 4")



SWAY EARRINGS - #20070 \$48

The fringe on these 'notice-me' gleaming hematite, shoulder-duster earrings drops a dramatic 5 inches!



AVALON BRACELET - #20066 \$86

Bold, beautiful, and mirror-bright, this hematite hinged cuff bracelet makes a major statement. Wear one on EACH wrist for double the impact!

VICEROY BRACELET - #20069 \$127

This pyramid-studded, hematite-finish bracelet is cool and edgy and just right for today's moto-chic fashion trend. Stretches to fit the wrist.





OWN THE NIGHT NECKLACE - #20021 \$249

Knotted, black, satin rope anchors the dramatic pavé hematite crystal disc. Measures 19" / Lobster clasp.

TEMPTATION BRACELET - #20012 \$169

Rows of clear Austrian crystals artfully glamorize this hematite, gently twisted bangle.



ON-THE-LIST

WEAR SULTRY SOPHISTICATED SPARKLE AND YOU'LL NEVER WAIT IN LINE AGAIN.

LET'S DANCE NECKLACE - #20053 \$228

A cascade of smoky-topaz acrylic and jet black glass faceted orbit beads fashion this dramatic, V-shaped bib necklace. (16" + 3")



INSANELY IT RING - #20013 \$147

The faceted, jet oval is surrounded by a pavé Austrian crystal encrusted frame accented with two princess-cut CZs. Available in sizes 5-10.



CHEERS RING - #20002 \$47

A trio of matte, silver tone rings to stack or wear separately. One is adorned with clear Austrian crystals and the other two have aurora borealis crystals. Available in sizes 5-10.



STUDIO CITY BRACELET - #20038 \$259

Sparkling hematite crystals embellish this glamorous, art deco era-inspired, stretch-to-fit bracelet.



LAGUNA COLLECTION

GET SWEEP AWAY IN THE MOMENT WEARING THE LUXURIOUS COLORS OF THE OCEAN

STACK 'EM BRACELET - #20075 \$104

The sleek silvertone bangle is punctuated with genuine Jasper oval gems. Couple two or three together for added glamour!
Genuine stones will vary slightly.



NEWPORT EARRINGS - #20062 \$117

Polished flat blue Jasper gemstones are set in delicate silver beadwork and artfully arranged to create dramatic chandelier earrings.
Genuine stones will vary slightly.



LAPIS RING - #20061 \$120

Prong-set in silvertone, this mega-size, teardrop-shaped genuine Jasper gemstone ring is a guaranteed complement-gatherer. Sizes 5-10
Genuine stones will vary slightly.



IT'S A WRAP BRACELET - #20046 \$124

Green suede cord, woven through a 21-inch goldtone chain, wraps around your wrist multiple times to anchor a sparkling bar of channel-set Austrian crystals.



MOJITO NECKLACE - #20027 \$79

Mint-green faceted beads separated by golden baby beads fashion this 16" + 4" necklace.



MOJITO RING - #20030 \$109

Mint-green cabochons and clear Austrian crystals accent this brilliant flower ring.
Matte, gold tone plating.
Available in sizes 5-10.



MOJITO EARRINGS - #20029 \$117

Mint-green, tear drops are nestled among mint green and aurora borealis Austrian crystals on these matte gold tone earrings.

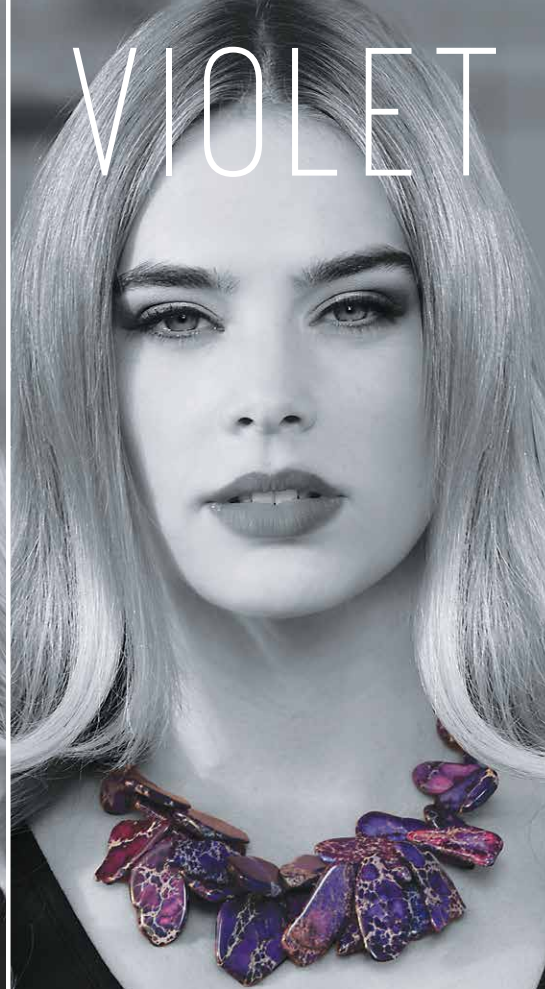


JASPER



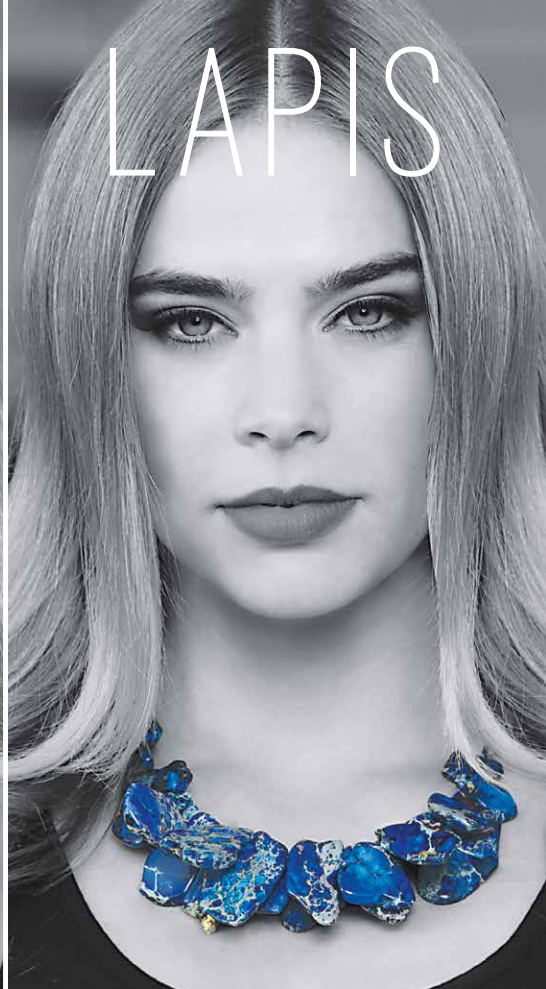
JASPER - #20048 \$364 Emerald green is the "IT" color of the season. A bold profusion of genuine jasper gemstone nuggets create this dramatic statement necklace.* (16" + 3")

VIOLET

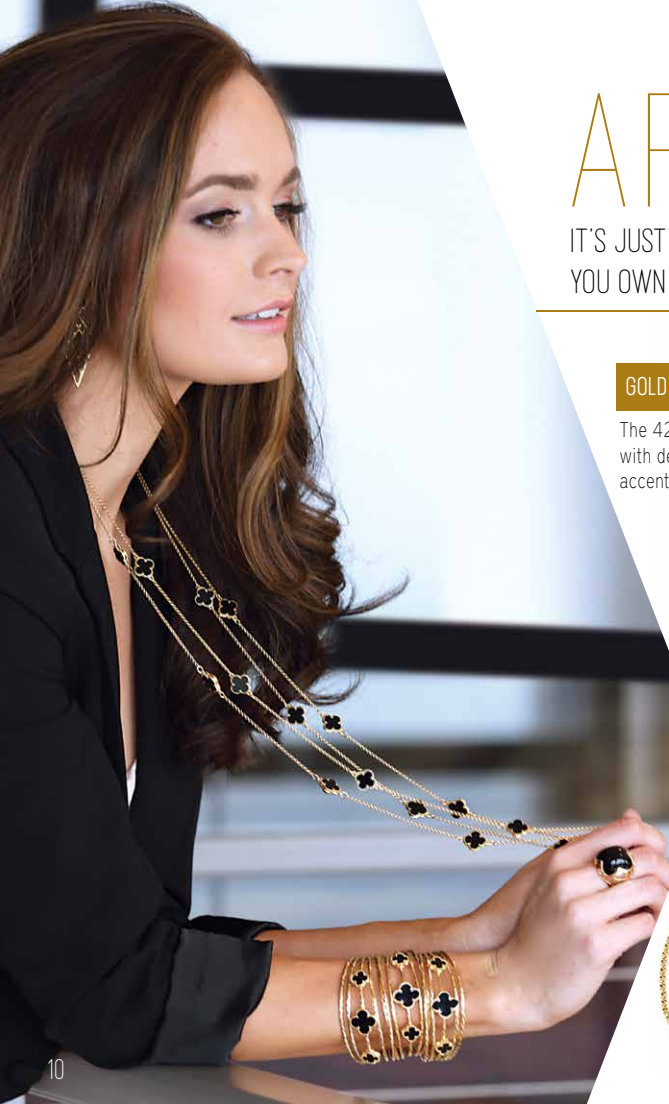


VIOLET - #20080 \$364 An elaborate cascade of polished flat genuine purple Jasper gemstones creates a dramatic, show-stopping statement necklace.* (16" + 3")

LAPIS



LAPIS - #20060 \$364 This profusion of genuine blue Jasper gemstones creates a mesmerizing cascade necklace. (16" + 3")
*Genuine stones will vary slightly.



GOLD COAST RING - #20040 \$117

AFTER PARTY

IT'S JUST PAST MIDNIGHT AND YOU'RE JUST GETTING STARTED.
YOU OWN THE NIGHT.

A genuine black agate quatrefoil-shaped gem merges seamlessly with the sculptured shank of this bold gold, dome ring. Sizes 5-10.



GOLD COAST NECKLACE - #20039 \$104

The 42-inch gold chain is embellished with designer-influenced quatrefoil accents presented in black onyx.



GOLD COAST BRACELET - #20051 \$103

A trio of onyx quatrefoil accents adorns the textured bars of this designer-inspired cuff.



ROOSEVELT BRACELET - #20072 \$190

A spectacular profusion of sparkling crystals, each set in golden prongs, embellishes the wide, black suede strap bracelet. Anchor this eye-popping bracelet to your wrist with adjustable golden snaps.





VIBE NECKLACE - #20037 \$85

Each strand of this 2-in-1 necklace features an Austrian crystal, dagger-style pendant. Wear the 22-inch long strand together with, or separate from, the 18" + 3" necklace.



TRIBAL BEAUTY EARRINGS - #20023 \$85

Matte, gold tone cones and burnished gold fringe sway freely on an arc of Austrian crystals in these spectacular, shoulder-duster earrings.



TRIBAL BEAUTY NECKLACE - #20022 \$67

Matte, gold tone cones and burnished gold fringe hang from an arc of Austrian crystals suspended from a burnished chain. Measures 28" + 3" ext.



APACHE NECKLACE - #20025 \$99

This gold tone arrowhead pendant features hand-painted enamel and miniature crystal accents. 28" + 3" long gold tone chain. Lobster clasp.



APACHE EARRINGS - #20026 \$24

Hand-painted enamel and sparkling hematite Austrian crystals enhance these petite, arrowhead pierced earrings.

CHEVRON BRACELET - #20014 \$55

These hand-painted enamel, retro chevron-motif bangle bracelets are cast in a polished gold tone. Black or white / sold separately.





HEAVEN ON EARTH COLLECTION

TAKE A DEEP BREATH AND ENJOY A LITTLE PIECE OF HEAVEN. THE PERFECT COLLECTION FOR YOUR MIND, BODY AND SOUL.



INFINITE NECKLACE - #20063 \$43

Suspended from its 15"+3" delicate golden chain, the sparkling Infinity symbol is channel-set with Austrian crystals.

MIX IT UP RING - #20067 \$64

Three shimmering hematite rings, each adorned with a faceted jet black gemstone, nest together to create a high-fashion ring trio, or slip each ring on a different finger. Sizes 5-10



FAITH BRACELET - #20079 \$49

SWEET BRACELET - #20078 \$49

INSPIRE BRACELET - #20077 \$49



A heart accent and bold goldtone sliding letters adorn these on-trend wrist straps. Choose or mix and match "FAITH", "SWEET", or "INSPIRE"! Adjusts from 7" to 7 1/2". Snap closure.



SILVER CRUSH NECKLACE - #20003 \$169

Slinky snake chains suspend an abstract, hammered, silver tone collar. Measures 16" + 3" in length.

VINTAGE SAPPHIRE RING - #20018 \$159

Clear jewels showcase the faux sapphire, emerald-cut gem in this matte silver tone ring. Available in sizes 5-10.



ANGEL CITY RINGS - #20065 \$78

The arched crystal-encrusted wings of this unique 3-D ring appear ready to take flight. Angel City is available in gold, silver, hematite, and rose gold finish with clear crystals, and in silvertone with ruby pink colored crystals. Sizes 5-10



THE AWAKENING

AWAKEN YOUR ALTER EGO WEARING JEWELRY WITH A BIT OF SASS, A LITTLE SPARKLE AND A LOT OF PERSONALITY.



FAVORITES EARRINGS - #20047 \$52

A solo Austrian crystal adorns the center of these matte-finish orb stud earrings. The trio includes one pair each; silver, gold and rose gold.



AWAKEN BRACELET - #20024 \$46

An Austrian crystal studded cross balances the faceted beads of this stretch to fit, chic bracelet. Available in hematite or copper. Sold separately.



NOW & FOREVER RINGS - #20054 \$49

Shimmering, channel-set CZs outline the cross of Now & Forever ring. Wear stacked or separately. Choose hematite, gold, or rose gold. Sz. 5-10. Sold separately.



SLEEK RINGS - #20045 \$52

Five sleek, mixed-metal rings to wear stacked or separately. Two silver; one each gold, hematite, and rose gold-plated. Sizes 5-10



HALO BRACELET - #20052 \$75

Crystals and burnished studs punctuate the leather strap that wraps the wrist to showcase a cross embellished with Austrian crystals. Available in black or white leather. Snap closure/Adjustable.



NOW & FOREVER NECKLACES - #20050 \$68

A disk of pave Austrian crystals encircles an open cross on the sparkling pendant that's suspended from its 15-inch (+3"extension) gold chain. Choose gold, rose gold, or hematite. Sold separately





GLAMOUR GIRL

WHAT'S NOW AND WHAT'S NEXT SPEAKS WITH A YOUTHFUL VIBE.

BFF NECKLACES - #20076 2 FOR \$59



This 16-inch + 3" delicate golden necklace features a solo accent CZ and a "bff" (best friends forever) pendant. Sold in a pair, keep one for yourself and give one to your bff!

HAUTE HIPSTER BRACELET - #20073 \$161

Sections of genuine mother-of-pearl, opals, and agate beads and crystals, woven into leather cording, merge to create one long strand. As you wrap your wrist, the different stones stack to fashion a multi-color bracelet. Genuine stones will vary slightly.



DAISY NECKLACE - #20041 \$43

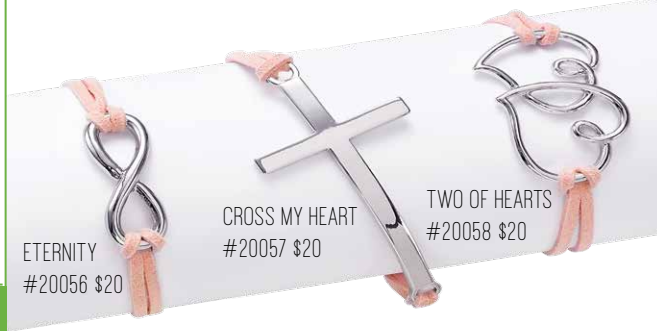
Austrian crystal-accented colorful daisies fashion this heart-shaped pendant suspended from its 15-inch gold chain.



DAISY EARRINGS - #20042 \$27



A tiny pink crystal shimmers from the center of these dainty earrings.



ETERNITY
#20056 \$20

CROSS MY HEART
#20057 \$20

TWO OF HEARTS
#20058 \$20

SUEDE BRACELETS - \$20 EACH OR 4 FOR \$70

Pink suede cords anchors a gleaming silver eternity/infinity symbol, a modern silvertone cross, intertwined silver hearts, or the word LOVE. Slip knots make it adjustable. Purchase them separately or as a set of four. (If purchasing as a set use #20049)

LOVE ME #20059 \$20



TOTALLY SWEET NECKLACE - #20074 \$39

Dainty and feminine, this 17-inch long necklace states "Sweet" and is available in gold, silver or dark hematite finish. (3" ext)

AMP UP YOUR GLAM-
FACTOR WITH THE
TWO BIGGEST
NAMES IN
HOLLYWOOD,
PARK LANE
JEWELRY
& E! LIVE
FROM THE
RED CARPET.



PARK LANE JEWELRY
1-800-621-0088
PARKLANEJEWELRY.COM



11/2013 SUPPLY #2299