



November 29, 2013

## ***TIME TO HEDGE?***

A **hedge** is an investment position intended to offset potential losses/gains that may be incurred by a companion investment. In simple language, a hedge is used to reduce any substantial losses/gains suffered by an individual or an organization.

A hedge can be constructed from many types of financial instruments, including [stocks](#), [exchange-traded funds](#), [insurance](#), [forward contracts](#), [swaps](#), [options](#), many types of [over-the-counter](#) and [derivative](#) products, and [futures contracts](#).

As human beings we hedge all of the time. Some hedges are not that expensive.

Even though I live in one of the sunniest cities in the world, I usually have a jacket ready, just in case.

When I go fishing, I take along my bottom fishing tackle just in case the surface fish do not bite.

When I go holiday shopping I keep the tags, just in case I have to take everything back.

Other hedges are quite expensive.

We can buy this insurance and that insurance for each and every move that we make on a trip. Our luggage, trip cancelation, missing our flight, and our rental car-all can be hedged. Just click the online button and it's done, *but it is not free*.

When I buy a new laptop or piece of office equipment, I am always offered an extended warranty. The scenario of the thing breaking on day 366 of a one year warranty always eats at me as I leave the store. I am a hard sell. I rarely buy the extended plan.

I just know that somewhere someone is earning a commission off of me.

Some people always buy the warranty, while others almost never do.

I just hate buying a car. The inevitable hot lights will eventually come on before the keys are finally handed over on your shiny new car.

Do you want to buy the lo-jack tracking device?

How about protection for that brand new paint?

Upholstery tears real easily, would you like insure it? Some folks are a hard-sell, while others are soft.

Engines almost always go out when the odometer hits 60,001. Then what are you going to do? Your warranty is no good any more. I think that Ford puts a chip in there somewhere that guarantees it.



Tick, Tick, Tick.....

And of course life insurance is the ultimate hedge. The first life insurance salesman showed up at my door when I was a newlywed.



Somehow, life insurance is just not a big priority at that stage of your life. Cheap, yes. But we don't even have a toaster yet.



*Check this out. You can listen to Best Stocks Now Radio Show while toasting your bread! Where do I get one?*

This has been yet another bad year for the hedge fund industry. One of my clients sent me article that listed the average hedge fund return of 6.2% year to date in 2013.

How could this be a bad year for hedge funds?

The market has had one of its best years ever?

It makes me wonder how the hedge funds will fare during a bad year in the market.

With the market up over 26% in 2013, how can the average hedge fund be up only 6.2%?

**The biggest reason is that cost of hedging has been high this year.**

Carrying a jacket around on warm evening is a real hassle. Plus, it is almost a guarantee that you are going to leave it somewhere and have to go back and get it the next day.

A \$200 vacation can become \$300 real quick if you do too much hedging.

A cheap clock radio can go up in price exponentially with that Cadillac extended warranty that guards against knocking it off the night table during a sleepless night.

Just like sticker shock is showing up on people's faces when they learn what all of the bells and whistles on their shiny, new healthcare plan costs.

A whole life insurance policy does not come cheap.

Neither does a big position in an underperforming asset. Here is where we stand year to date:

<b>Asset Class</b>	<b>12/31/12 Close</b>	<b>Fri. 11/29/13 Close</b>	<b>2012 Final</b>	<b>2013 YTD</b>
S&P500	1426.19	1805.81	13.41%	26.62%
Forward PE ratio	16.49	18.58	2.09	12.67%
DJIA	13104.00	16086.41	7.06%	22.76%
NASD	3019.51	4059.89	15.66%	34.46%
S&P600 (Small)	476.57	656.85	14.82%	37.83%
S&P400 (Mid-Cap)	1020.43	1304.18	16.07%	27.81%
Total World Stock Index	49.42	58.50	16.07%	18.37%
Emg. Mkts (VWO)	44.53	41.48	16.54%	-6.85%
Em Mkt Sm. Cap (DGS)	49.44	47.44	19.59%	-4.05%
Europe (EFA)	56.86	66.24	14.80%	16.50%
China (FXI)	40.45	40.13	16.00%	-0.79%
Latin America (ILF)	43.84	38.24	2.98%	-12.77%
20 Yr.+ U.S Treas. (TLT)	121.18	104.37	2.98%	-13.87%
7-10 Yr. U.S Treas. (IEF)	106.99	101.68	2.98%	-4.96%
U.S. 10yr. Tr.	2.01%	2.74%	-0.53%	-36.32%
Spain 10yr. Bond	4.11%	4.15%	5.17%	-0.97%
Oil	94.75	93.79	5.21%	-1.01%
Gold	1692.00	1250.80	6.14%	-26.08%

I have pointed out many times in the past year, the wide range of returns from the various asset classes.

From small cap U.S. stocks which are up over 38% year to date, to gold which is down 26%, and of course everything in between.

With just one month left to go in 2013, here is where a 50/50 bond/stock portfolio is year-to-date

## 2013

<u>Begin</u>	<u>Invest</u>	<u>Gain/Loss</u>	<u>Current</u>	<u>Pct.</u>
\$50,000	TLT	-\$6,936	\$43,064	
\$50,000	S&P 500	\$13,468	\$63,468	
<b><u>\$100,000</u></b>		<b><u>\$6,532</u></b>	<b><u>\$106,532</u></b>	<b><u>6.53%</u></b>

Hmmm, very interesting. Plus 6.5%. Just about in line with the average hedge fund!

In 2012, the market was up 11.82%, but a 50/50 fund was up 5.88%.

## 2012

<u>Begin</u>	<u>Invest</u>	<u>YTD</u>	<u>Gain/Loss</u>	<u>Current</u>	<u>Pct.</u>
\$50,000	TLT	-0.06%	-\$29	\$49,971	
\$50,000	S&P 500	11.82%	\$5,911	\$55,911	
<b><u>\$100,000</u></b>			<b><u>\$5,882</u></b>	<b><u>\$105,882</u></b>	<b><u>5.88%</u></b>

But, in 2008 a 50/50 fund bought you a big chunk of protection!

## 2008

<u>Begin</u>	<u>Invest</u>	<u>YTD</u>	<u>Gain/Loss</u>	<u>Current</u>	<u>Pct.</u>
\$50,000	TLT	32.10%	\$16,050	\$66,050	
\$50,000	S&P 500	-38.50%	-\$19,250	\$30,750	
<b><u>\$100,000</u></b>			<b><u>-\$3,200</u></b>	<b><u>\$96,800</u></b>	<b><u>-3.20%</u></b>

With the stock market down 38.5% and the bond market up 32.1%, the net was just a 3.2% overall loss. Of course you would have been up 32.1% had you been 100% in the bond market that year. But only a 3.2% loss would have sure been more palatable than a 38.5% drubbing being 100% in stocks!

A 50/50 stock bond portfolio **since January 1, 2008** is up a grand total of 6.37%

A 100% stock portfolio is up 22.9%.

A 100% bond portfolio is up 36.4%.

Being 100% invested in the BEST performing asset class each year since January 1, 2008 would be up an astonishing 259%!!!

Modern Portfolio Theory (MPT)? Indeed!

I am not buying it.

As you can see if we can tilt our portfolios just a little bit towards the best performing asset class each year, we are going to GREATLY improve our performance over time.

**BACN™-Best Asset Classes NOW.** Everybody loves bacon! Bacon sizzles!

I make no claims or guarantees, but I do everything that I can possible do to be in the best performing asset classes vs. the worst ones.

In just a moment will look at the best asset classes now BACN™. But before we do, let's check and see how we finished the week.

Asset Class	Fri. 11/22/13 Close	Fri. 11/29/13 Close	Week Change	Week Pct. Change
S&P500	1804.76	1805.81	1.05	0.06%
Forward PE ratio	18.38	18.58	0.20	1.09%
DJIA	16,064.77	16,086.41	21.64	0.13%
NASD	3991.65	4059.89	68.24	1.71%
S&P600 (Small)	648.08	656.85	8.77	1.35%
S&P400 (Mid-Cap)	1308.81	1304.18	-4.63	-0.35%
Tot.Wld Stock Index (VT)	58.44	58.50	0.06	0.10%
Emg. Mkts (VWO)	41.35	41.48	0.13	0.31%
Em Mkt Sm. Cap (DGS)	47.00	47.44	0.44	0.94%
Europe (EFA)	66.15	66.24	0.09	0.14%
China (FXI)	39.96	40.13	0.17	0.43%
Latin America (ILF)	38.74	38.24	-0.50	-1.29%
20 Yr.+ U.S Treas. (TLT)	103.91	104.37	0.46	0.44%
7-10 Yr. U.S Treas. (IEF)	101.68	101.68	0.00	0.00%
U.S. 10yr. Tr.	2.75%	2.74%	-0.01%	0.36%
Greece 10yr. Bond	8.76%	8.83%	0.07%	-0.80%
Italy 10yr. Bond	4.09%	4.05%	-0.04%	0.98%
Spain 10yr. Bond	4.11%	4.15%	0.04%	-0.97%
Oil	94.72	93.79	-0.93	-0.98%
Gold	1242.90	1250.80	7.90	0.64%

The Nasdaq continues to sizzle like bacon, while there is nothing shiny about gold, and interest rates continue to trend upwards.

This will ALL change at some point in the future, however. The first shall be last and the last shall be first! We just don't know when the shake-up is coming.

That is why we have to take it one day at a time, one stock at a time, one sector at a time, and one stock at a time.

This completely flies in the face of asset allocation which takes it ONE YEAR AT A TIME!

[Here](#) is why the average hedge fund is only up 6.2% year to date.

Speaking of BEST ASSET CLASSES NOW (BACN™), with just one month left in 2013, where do we stand?

Let's check the current ranking of the asset classes. I rank 45 different asset classes (including a lot of stock and bond oriented ones) on a daily basis. I generally focus on the top 8-10. Here is how they currently stack up:

Top 8 (3 wks. ago)



Rank	Asset Class	Symbol
1	Small-Cap Growth Index	IJT-(456)
2	Small-Cap Value Index	IJS-(536)
3	Smallcap Dividend Index (	DES-(594)
4	Mid-Cap Value	VOE-(618)
5	Nasdaq 100 Index	QQQ-(656)
6	Large-Cap Growth	JKE-(669)
7	Mid Cap Growth	IJK-(677)
8	Private Equity Listed Ind	PSP-(725)

Top 8 (2 wks. ago)



Rank	Asset Class	Symbol
1	Small-Cap Growth Index	IJT-(420)
2	Small-Cap Value Index	IJS-(614)
3	Nasdaq 100 Index	QQQ-(713)
4	Mid-Cap Value	VOE-(723)
5	Mid Cap Growth	IJK-(740)
6	Smallcap Dividend Index (	DES-(804)
7	Largecap Dividend Index (	DLN-(953)
8	Large-Cap Growth	JKE-(1037)

Top 8 (This week)



Rank	Asset Class	Symbol
1	Small-Cap Growth Index	IJT-(513)
2	Small-Cap Value Index	IJS-(529)
3	Smallcap Dividend Index (	DES-(723)
4	Micro-Cap Index	IWC-(758)
5	Nasdaq 100 Index	QQQ-(806)
6	Mid-Cap Value	VOE-(837)
7	Mid Cap Growth	IJK-(893)
8	Large-Cap Growth	JKE-(1034)

Where do I currently stand on the stock vs. bond debate? With the TOP TEN asset classes being all stock related, I still stand FIRM on a 100%/0% stock bond mix. I have kept you out of the bond bashing that has taken place over the last 12 months!

Also notice that the 100% stock mix is still decidedly tilted in the small and mid-cap direction! This is also very important information to build portfolios around. **It ain't over 'til it's over!**



We next check Asset Classes 9-16 again this week to see if anything interesting is going on there.

(9-16) Three weeks ago



(9-16) Last week



(9-16) This week



The first bond related asset class shows up #12 in the emerging market income arena. I just don't dip down that low when it comes to modeling my portfolios. In between asset classes 16-37 is just a whole bunch of MEDIOCRITY that would for certain show up in an MPT asset allocation portfolio that is tended to once per year, or once per quarter if you are lucky. ☺

Here are the CURRENT bottom eight ranked asset classes:

Bottom 8 two weeks ago



Bottom 8 last week



Bottom 8 this week



Being SHORT the market continues to thrash portfolios, while gold, cash, commodities, and interest rate sensitive investments (bonds) should be avoided like the plague!

Let's pause for a moment and look at the current technical picture of the stock markets. I always like visual confirmation of my asset class rankings.

### One-year chart of the S&P 500



The S&P 500 still looks fine to me. All-time highs this past week. To sell now would be a mere guess. Guessing that the market has topped out over the last 5 years has been a losing prognostication.



### Three-year chart of the S&P500



The primary trend of the market still points up. This is another term for BULL MARKET.

### One-year chart of the NASDAQ:



The Nasdaq is now north of 4,000. It is also up 34.5% on the year. If you think that the Nasdaq has topped out, then short it.

### PSQ ProShares Short QQQ Fund NYSE

© StockCharts.com

29-Nov-2013

Open 18.83 High 18.85 Low 18.77 Close 18.80 Volume 194.6K Chg -0.11 (-0.58%)



But don't say that I did not WARN YOU!

### One-year chart of the DJIA

### \$INDU Dow Jones Industrial Average INDEX

© StockCharts.com

29-Nov-2013 12:53pm

Open 16105.16 High 16174.51 Low 16074.14 Last 16077.97 Chg -19.36 (-0.12%)



The DJIA has broken out through resistance to new, all-time highs. How long can it go for? Nobody knows the answer to that question. That is why we take it one day at a time. Let's next look at the leading indexes around the world.

BEST two weeks ago



BEST last week



BEST this week



Stocks, stocks and more stocks. The reverse VIX is also interesting.

Here are the current **worst** indexes around the world.

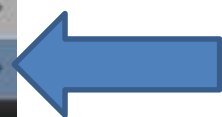
Worst Indexes 2 weeks ago



Worst Indexes last week



Worst Indexes this week



This inverse Vix and regular Vix relationship will be interesting to watch going forward. It could give some important clues as to when this current bullish trend begins to change.

Now on to the sectors in the market. Best Asset Classes Now-BACN™. Best Sectors Now. Best Stocks Now. I track sixty sectors on a daily basis. Here are the current leaders.

Top 8 three weeks ago



Top 8 two weeks ago



Top 8 this week



I know that I sound like a broken record, but pharmaceuticals and biotechs continue to lead the market.

Let's next check sector rankings 9-16 to see if anything interesting is going on there:

#9-16 (3 weeks ago)



#9-16 (2 weeks ago)



#9-16 (this week)



The BANKS are really starting to kick into gear again. I saw several breakouts in the banks this past week! Here is just one good example.

29-Nov-2013

Open 20.70 High 20.80 Low 20.43 Close 20.47 Volume 27.5K Chg -0.08 (-0.39%)

ABCB (Daily) 20.47

MA(50) 18.64  
MA(200) 16.99  
MA(20) 19.23



Here are this week's worst ranked sectors.

**Bottom 8 Two Weeks Ago**

Rank	Sector	Index
8-	Alternative Energy	GEX-(2272)
8-	Emerging Markets	EEM-(2353)
8-	Nuclear Energy Index	NLR-(2359)
8-	Realty Majors	ICF-(2399)
8-	Real Est. U.S Index iShar	IYR-(2526)
C+	Metals/Mining Sector	XME-(2871)
C+	Goldminer's Index	GDX-(2883)
C+	Networking Sector	IGN-(3030)

**Bottom 8 Last Week**

Rank	Sector	Index
C+	Agribusiness Small-Cap In	CROP-(2835)
C+	Clean Energy Index	ICLN-(2866)
C+	Nuclear Energy Index	NLR-(2895)
C+	Networking Sector	IGN-(2922)
C+	Real Est. U.S Index iShar	IYR-(3017)
C+	Global Shipping Index	SEA-(3043)
C-	Metals/Mining Sector	XME-(3341)
C-	Goldminer's Index	GDX-(3484)

**Bottom 8 This Week**

Rank	Sector	Index
C+	Networking Sector	IGN-(2771)
C+	Intl. REIT Index	VNQ-(2784)
C+	Realty Majors	ICF-(2856)
C+	Global Utilities	JXI-(2876)
C+	Nuclear Energy Index	NLR-(2907)
C	Real Est. U.S Index iShar	IYR-(3194)
C-	Metals/Mining Sector	XME-(3457)
C-	Goldminer's Index	GDX-(3553)

I have been showing you a lot of good charts. Here is what a bad one looks like.



Rising interest rates have taken their toll on the bond and real estate sector.

If you are 75 years old, you are supposed to have 75% of your assets in bonds. Right? Not according to Bill Gunderson BEST ASSET CLASS NOW (BACN™) theory!

The four year, nine month old BULL MARKET is still intact. I am not a buy and holder. I am a market timer. I have kept you in throughout this current bull. It will come to an end at some point, but I just don't see enough evidence yet. Therefore, I continue to keep the **GREEN FLAG** flying on the stock market.



Please follow me on Twitter @BillGunderson throughout the week for any changes in my current stance on the market or individual stocks. If you need a quick primer on how to use Twitter, click [here](#).

My tweets are also found on my **BEST STOCKS NOW** app every day, and on the [homepage](#) of my website: <http://www.pwstreet.com>

## Bill Gunderson's Model Portfolio for Investors seeking Aggressive/Moderate Growth.

This is my most aggressive portfolio. It is designed for investors with long-term time horizons, seeking maximum growth. This portfolio is made up mainly of small and mid-cap stocks with superior growth potential. This portfolio is up **36.76%** YTD after all expenses.

I added Allegiant Travel (ALGT) to this portfolio this past week. I did not sell anything. Cash level is now **17.8%**. **Actual Portfolios may vary depending on start time and actual stock mix.**

<b>Gunderson Aggressive Gr. Model Portfolio</b>		* <b>36.76%</b> <u>YTD</u> (After Fees)										
<b>As of 11/29/2013 (8:00am)</b>		<b>38.44%</b> <u>YTD</u> (Before Fees)										
		* <b>11.99%</b> <b>2012</b> (After Fees)										
		<b>14.89%</b> <b>2012</b> (Before Fees)										
*(Net of all \$7 trading fees and an annual mgt. fee of 2.0%-INTERNALLY AUDITED)												
*Actual accounts managed by Gunderson Capital Mgt. may vary depending upon when accounts are opened and actual stock mix.												
<u>Sym.</u>	<u>Name</u>	<u>Sector</u>	<u>Add Date</u>	<u>Add Price</u>	<u>Adj. Price</u>	<u>Shares</u>	<u>Begin Value</u>	<u>Current Price</u>	<u>Current Value</u>	<u>Current G/L</u>	<u>Current Allocation</u>	
1	AKRX	Akorn Inc.	Drug	30-Sep-13	\$19.64	\$19.64	295	\$5,794	\$26.00	\$7,670	32.4%	4.66%
2	ACET	Aceto Corp.	Basic Mat.	22-Nov-13	\$20.64	\$20.64	260	\$5,366	\$21.44	\$5,574	3.9%	3.39%
3	ALGT	Allegiant Travel	Transportation	27-Nov-13	\$113.65	\$113.65	50	\$5,683	\$113.65	\$5,683	0.0%	3.46%
4	ANAC	Anacor Pharm.	Drug	15-Aug-13	\$10.54	\$10.54	477	\$5,028	\$13.81	\$6,587	31.0%	4.01%
5	BCEI	Bonanza Creek Energy	Energy	19-Sep-13	\$47.87	\$47.87	115	\$5,505	\$45.53	\$5,236	-4.9%	3.18%
6	CEMP	Cempra Inc.	Drug	26-Sep-13	\$10.57	\$10.57	515	\$5,444	\$12.95	\$6,669	22.5%	4.06%
7	CFX	Colfax Corp.	Industrial	31-May-13	\$49.90	\$49.90	94	\$4,691	\$58.23	\$5,474	16.7%	3.33%
8	DDD	Three D Systems	Technology	31-Oct-13	\$62.71	\$62.71	87	\$5,456	\$75.50	\$6,569	20.4%	3.99%
9	DXCM	Dexcom Inc.	Drug	10-May-13	\$19.85	\$19.85	229	\$4,546	\$33.47	\$7,665	68.6%	4.66%
10	ILMN	Illumina	Drug	26-Jun-13	\$75.73	\$75.73	62	\$4,695	\$97.67	\$6,056	29.0%	3.68%
11	INCY	Incyte Corp.	Drug	18-Nov-13	\$46.96	\$46.96	115	\$5,400	\$47.15	\$5,422	0.4%	3.30%
12	JAZZ	Jazz Pharmaceuticals	Drug	31-May-13	\$69.00	\$69.00	68	\$4,692	\$116.98	\$7,955	69.5%	4.84%
13	NUS	Nu Skin Enterprises	Consumer	16-Aug-13	\$87.28	\$87.28	58	\$5,062	\$128.25	\$7,439	46.9%	4.52%
14	OPEN	Opentable Inc.	Consumer	8-Nov-13	\$77.23	\$77.23	68	\$5,252	\$83.90	\$5,705	8.6%	3.47%
15	P	Pandora Media	Media	21-Aug-13	\$21.48	\$21.48	238	\$5,112	\$28.59	\$6,804	33.1%	4.14%
16	PCRX	Pacira Pharmaceuticals	Drug	22-Nov-13	\$55.49	\$55.49	97	\$5,383	\$55.28	\$5,362	-0.4%	3.26%
17	PDLI	P D L Biopharma	Drug	22-Nov-13	\$9.51	\$9.51	570	\$5,421	\$9.75	\$5,558	2.5%	3.38%
18	PCYC	Pharmacyclics Inc.	Drug	12-Jul-13	\$107.00	\$107.00	48	\$5,136	\$124.59	\$5,980	16.4%	3.64%
19	TRIP	TripAdvisor	Leisure	31-Oct-13	\$83.85	\$83.85	67	\$5,618	\$88.41	\$5,923	5.4%	3.60%
20	STLD	Steel Dynamics	Basic Mat.	8-Nov-13	\$19.23	\$19.23	275	\$5,288	\$18.09	\$4,975	-5.9%	3.03%
21	YELP	Yelp Inc	Internet	15-Nov-13	\$69.41	\$69.41	80	\$5,553	\$60.89	\$4,871	-12.3%	2.96%
22	WST	West Pharm. Services	Medical	10-Oct-13	\$42.83	\$42.83	120	\$5,140	\$50.13	\$6,016	17.0%	3.66%
<b>Curren Mkt. Value</b>									\$135,192	82.2%		
<b>Current Cash</b>									\$29,253	17.8%		
<b>Current Total Value</b>									\$164,445	100.0%		
<b>Begin 2013</b>									\$120,246			
<b>2013 YTD G/L (After Fees)</b>									\$44,200	36.76%		
<b>2013 Mgt. Fees (2.0%) annual</b>									\$1,304			
<b>2013 Trading Costs (\$7 each)</b>									\$714			
<b>Total Costs</b>									\$2,018	1.7%		
<b>2013 YTD G/L (Before Fees)</b>									\$38,444			
<b>Begin 2012</b>									\$107,371			
<b>End 2012</b>									\$120,246			
<b>2012 Gain</b>									\$12,875			
<b>Pct. Gain (after all fees)</b>									11.99%			

I did a feature of Aceto Corp. on Monday's show. You can watch it [Here](#)

Akorn continues to hit new highs. I [wrote](#) about it this past week.



I bought the breakout on Allegiant this past week.





Energy stocks like Bonanza are barely hanging on. I do have an exit strategy just in case.



Yelp is another one that is barely hanging in there. I wish that they all could be winners.



# West Pharmaceuticals is breaking out to new highs!

WST West Pharmaceutical Services NYSE

© StockCharts.com

29-Nov-2013 11:29am

Open 50.35 High 50.60 Low 49.88 Last 50.01 Volume 45.4K Chg -0.07 (-0.14%)

1/4 WST (Daily) 50.01

MA(50) 45.06

MA(200) 36.94

MA(20) 47.59



**Gunderson Aggressive Growth Model Portfolio Sells 2013**

	Symbol	Name	Sector	Bought	Buy Price		Shares	Tot. Buy	Sell Price	Total Sell	Pct. G/L	Sell Date
1	ALXN	Alexion Pharmaceutical	Drug	22-Jun-12	\$95.95	\$95.95	51	\$4,893	\$97.18	\$4,956	1.3%	18-Jan-13
2	ONXX	Onyx Pharmaceuticals	Drug	21-Sep-12	\$85.04	\$85.04	58	\$4,932	\$77.33	\$4,485	-9.1%	18-Jan-13
3	ELL	Ellie Mae	Real Est.	12-Oct-12	\$26.40	\$26.40	176	\$4,646	\$22.21	\$3,909	-15.9%	25-Jan-13
4	AMT	American Tower	Telecom	26-Oct-12	\$73.37	\$73.37	57	\$4,182	\$76.87	\$4,382	4.8%	8-Feb-13
5	SSYS	Stratays	Technology	18-Jan-12	\$87.03	\$87.03	48	\$4,177	\$71.20	\$3,418	-18.2%	15-Feb-13
6	REGN	Regeneron Pharm.	Drug	31-Aug-12	\$145.96	\$145.96	32	\$4,671	\$163.85	\$5,243	12.3%	15-Feb-13
7	CHN	China Fund	International	28-Dec-12	\$21.02	\$21.02	190	\$3,994	\$21.81	\$4,144	3.8%	8-Mar-13
8	DGS	Emg. Mkt. Sm. Cap Index	International	14-Dec-12	\$47.92	\$47.92	83	\$3,977	\$50.55	\$4,196	5.5%	22-Mar-13
9	OCN	Ocwen Financial	Financial	17-Aug-12	\$24.87	\$24.87	192	\$4,775	\$34.99	\$6,718	40.7%	22-Mar-13
10	RGR	Sturm Ruger	Leisure	8-Feb-13	\$55.35	\$55.35	76	\$4,207	\$52.62	\$3,999	-4.9%	22-Mar-13
11	UTEK	Ultratech Inc.	Technology	18-Jan-13	\$39.36	\$39.36	106	\$4,172	\$39.60	\$4,198	0.6%	22-Mar-13
12	TOL	Toll Brothers Inc	Building	25-Jan-13	\$37.98	\$37.98	111	\$4,216	\$34.24	\$3,801	-9.8%	22-Mar-13
13	CRM	Salesforce.com	Software	14-Dec-12	\$166.85	\$166.85	24	\$4,004	\$165.42	\$3,970	-0.9%	5-Apr-13
14	DHI	D R Horton	Building	22-Mar-13	\$24.92	\$24.92	160	\$3,987	\$23.08	\$3,693	-7.4%	5-Apr-13
15	PCYC	Pharmacyclics Inc.	Drug	14-Aug-12	\$59.50	\$59.50	80	\$4,760	\$75.55	\$6,044	27.0%	5-Apr-13
16	PIR	Pier 1 Imports	Consumer	19-Oct-12	\$20.34	\$20.34	234	\$4,760	\$21.83	\$5,108	7.3%	5-Apr-13
17	TTC	Toro Co.	Building	20-Jul-12	\$39.55	\$39.55	120	\$4,746	\$45.43	\$5,452	14.9%	5-Apr-13
18	XHB	Homebuilders Index	Building	26-Oct-12	\$25.52	\$25.52	165	\$4,211	\$28.91	\$4,763	13.3%	5-Apr-13
19	ARII	American Railcar Inds.	Transportation	1-Feb-13	\$39.82	\$39.82	106	\$4,221	\$40.51	\$4,294	1.7%	12-Apr-13
20	GWR	Genesee & Wyoming	Transportation	14-Dec-12	\$73.90	\$73.90	53	\$3,917	\$84.93	\$4,501	14.9%	12-Apr-13
21	AZZ	A Z Z Inc.	Building	25-Jan-13	\$43.62	\$43.62	97	\$4,231	\$41.53	\$4,028	-4.8%	19-Apr-13
22	LL	Lumber Liquidators	Building	12-Feb-13	\$62.25	\$62.25	69	\$4,295	\$67.21	\$4,637	8.0%	19-Apr-13
23	TREX	Trex Company Inc.	Building	25-Jan-13	\$42.78	\$42.78	99	\$4,235	\$47.35	\$4,688	10.7%	19-Apr-13
24	CTRX	Catamaran Corp.	Medical	9-Mar-12	\$36.51	\$36.51	82	\$2,994	\$51.54	\$4,226	41.2%	10-May-13
25	CBG	C B R E Group	Real Est.	8-Feb-13	\$24.08	\$24.08	174	\$4,190	\$24.21	\$4,213	0.5%	10-May-13
26	FCFS	First Cash Financial	Financial	29-Mar-13	\$58.34	\$58.34	70	\$4,084	\$54.07	\$3,785	-7.3%	10-May-13
27	HHC	Howard Hughes Corp.	Real Est.	5-Oct-12	\$73.60	\$73.60	62	\$4,563	\$101.80	\$6,312	38.3%	22-May-13
28	CTGX	Computer Task Group	Technology	22-Mar-13	\$21.56	\$21.56	185	\$3,989	\$22.10	\$4,089	2.5%	24-May-13
29	BMRN	Biomarin Pharm.	Drug	14-Dec-12	\$49.59	\$49.59	80	\$3,967	\$62.70	\$5,016	26.4%	31-May-13
30	PCH	Potlatch Corp.	Real Est.	5-Apr-13	\$45.78	\$45.78	94	\$4,303	\$46.92	\$4,410	2.5%	29-May-13
31	BRS	Bristow Group	Energy	22-Mar-13	\$63.32	\$63.32	63	\$3,989	\$62.19	\$3,918	-1.8%	3-Jun-13
32	GNC	General Nutrition	Consumer	3-May-13	\$45.39	\$45.39	99	\$4,494	\$43.33	\$4,290	-4.5%	4-Jun-13
33	JBHT	J B Hunt Trans Svcs	Transportation	16-Nov-12	\$59.30	\$59.30	65	\$3,855	\$71.55	\$4,651	20.7%	4-Jun-13
34	SBH	Sally Beauty	Consumer	12-Apr-12	\$30.55	\$30.55	124	\$3,788	\$29.58	\$3,668	-3.2%	5-Jun-13
35	SGEN	Seattle Genetics	Drug	15-Mar-13	\$33.55	\$33.55	133	\$4,462	\$33.53	\$4,459	-0.1%	4-Jun-13
36	WSO	Watsco Inc.	Building	21-Dec-12	\$75.54	\$75.54	52	\$3,928	\$86.37	\$4,491	14.3%	4-Jun-13
37	ABG	Asbury Automotive Group	Auto	26-Oct-12	\$30.55	\$30.55	157	\$4,796	\$40.12	\$6,299	31.3%	12-Jun-13
38	AEGR	Aegerion Pharmaceuticals	Drug	10-May-13	\$44.88	\$44.88	101	\$4,533	\$69.49	\$7,018	54.8%	13-Jun-13
39	LGF	Lions Gate Entertainment	Leisure	3-May-13	\$25.92	\$25.92	174	\$4,510	\$26.96	\$4,691	4.0%	12-Jun-13
40	ONXX	Onyx Pharm	Drug	26-Apr-13	\$94.69	\$94.69	47	\$4,450	\$86.44	\$4,063	-8.7%	12-Jun-13
41	REGN	Regeneron Pharm.	Drug	26-Apr-13	\$216.60	\$216.60	21	\$4,549	\$237.70	\$4,992	9.7%	12-Jun-13
42	ALKS	Alkermes	Drug	12-Apr-13	\$24.99	\$24.99	177	\$4,423	\$27.64	\$4,892	10.6%	20-Jun-13
43	BECN	Beacon Roofing	Building	31-May-13	\$41.22	\$41.22	113	\$4,658	\$38.96	\$4,402	-5.5%	20-Jun-13
44	GILD	Gilead Sciences	Drug	16-Nov-12	\$37.44	\$37.44	102	\$3,818	\$49.94	\$5,094	33.4%	20-Jun-13
45	IMGN	Immunogen Inc.	Drug	31-May-13	\$18.70	\$18.70	252	\$4,712	\$15.34	\$3,866	-18.0%	20-Jun-13
46	PBH	Prestige Brands	Consumer	11-Feb-13	\$24.58	\$24.58	175	\$4,302	\$28.39	\$4,968	15.5%	20-Jun-13
47	CSGP	Costar Group	Real Est.	21-Dec-12	\$87.23	\$87.23	45	\$3,925	\$135.49	\$6,097	55.3%	12-Jul-13
48	TMH	Team Health Hldgs.	Healthcare	22-Mar-13	\$35.14	\$35.14	111	\$3,901	\$39.14	\$4,345	11.4%	22-Jul-13
49	TRS	Trimas Corp.	Diversified	26-Jun-13	\$35.88	\$35.88	130	\$4,664	\$35.01	\$4,551	-2.4%	24-Jul-13
50	CSOD	Cornerstone OnDemand	Technology	14-Jun-13	\$43.46	\$43.46	107	\$4,650	\$43.00	\$4,601	-1.1%	29-Jul-13
51	HHC	Howard Hughes Inc.	Real Est.	27-Jun-13	\$113.03	\$113.03	41	\$4,634	\$108.09	\$4,432	-4.4%	29-Jul-13
52	MOH	Molina Healthcare	Healthcare	10-May-13	\$36.72	\$36.72	124	\$4,553	\$37.05	\$4,594	0.9%	9-Aug-13
53	FURX	Furiex Pharm.	Drug	23-Jul-13	\$46.10	\$46.10	108	\$4,979	\$37.31	\$4,029	-19.1%	15-Aug-13
54	TSCO	Tractor Supply	Consumer	5-Apr-13	\$106.03	\$106.03	41	\$4,347	\$117.24	\$4,807	10.6%	15-Aug-13
55	NEOG	Neogen Corp.	Medical	5-Apr-13	\$49.40	\$49.40	87	\$4,298	\$53.29	\$4,636	7.9%	20-Aug-13
56	DW	Drew Industries	Building	10-Jun-13	\$39.53	\$39.53	119	\$4,704	\$40.68	\$4,841	2.9%	27-Aug-13
57	ISIS	Isis Pharmaceuticals	Drug	13-Jun-13	\$23.51	\$23.51	204	\$4,796	\$24.34	\$4,965	3.5%	27-Aug-13
58	SNTS	Santarus Inc.	Drug	18-Jan-13	\$12.51	\$12.51	335	\$4,191	\$22.76	\$7,625	81.9%	27-Aug-13
59	THO	Thor Industries	Building	14-Jun-13	\$48.12	\$48.12	97	\$4,668	\$50.46	\$4,895	4.9%	27-Aug-13
60	EEV	Ultrashort Emerging Markets	Inverse	27-Aug-13	\$26.94	\$26.94	185	\$4,984	\$23.20	\$4,292	-13.9%	6-Sep-13
61	NBIX	Neurocrine Biosciences	Drug	3-Sep-13	\$15.73	\$15.73	327	\$5,144	\$10.62	\$3,473	-32.5%	13-Sep-13
62	TROV	Trovagene Inc.	Drug	31-Jul-13	\$8.19	\$8.19	630	\$5,160	\$7.15	\$4,505	-12.7%	20-Sep-13
63	TSRX	Trius Therapeutics	Drug	15-Jul-13	\$10.65	\$10.65	482	\$5,133	\$13.63	\$6,570	28.0%	Bought Out 20-Sep-13
64	DORM	Dorman Products	Auto	14-Aug-13	\$52.35	\$52.35	96	\$5,026	\$49.85	\$4,786	-4.8%	4-Oct-13
65	AFOP	Alliance Fiber Optic	Technology	28-Aug-13	\$18.66	\$18.66	270	\$5,037	\$17.72	\$4,784	-5.0%	8-Oct-13
66	ALKS	Alkermes	Drug	29-Jul-13	\$34.53	\$34.53	150	\$5,180	\$30.26	\$4,539	-12.4%	8-Oct-13
67	ALNY	Alnylam Pharm	Drug	24-May-13	\$28.86	\$28.86	165	\$4,762	\$57.11	\$9,423	97.9%	8-Oct-13
68	ASGN	On Assignment	Misc.	22-Mar-13	\$24.91	\$24.91	160	\$3,986	\$34.37	\$5,499	38.0%	18-Oct-13
69	BMRN	Biomarin Pharm.	Drug	9-Sep-13	\$74.99	\$74.99	72	\$5,399	\$65.42	\$4,710	-12.8%	18-Oct-13
70	ACAD	Acadia Pharm.	Drug	15-Jul-13	\$19.85	\$19.85	250	\$4,963	\$21.70	\$5,425	9.3%	23-Oct-13
71	SGMO	Sangamo Biosciences	Drug	2-Oct-13	\$12.44	\$12.44	470	\$5,847	\$10.33	\$4,855	-17.0%	25-Oct-13
72	NPSP	N P S Pharmaceuticals	Drug	19-Apr-13	\$12.87	\$12.87	168	\$2,162	\$27.99	\$4,702	117.5%	SOLD HALF 21-Oct-13
73	USNA	U SA N A Health Science	Consumer	14-Jun-13	\$74.15	\$74.15	63	\$4,671	\$69.04	\$4,350	-6.9%	31-Oct-13
74	NPSP	N P S Pharmaceuticals	Drug	19-Apr-13	\$12.87	\$12.87	169	\$2,175	\$27.23	\$4,602	111.6%	SOLD THE REST 30-Oct-13
75	GPOR	Gulfport Energy	Energy	28-Aug-13	\$59.39	\$59.39	87	\$5,167	\$55.33	\$4,814	-8.8%	7-Nov-13
76	OCN	Ocwen Financial	Financial	30-Jul-13	\$47.57	\$47.57	110	\$5,233	\$50.80	\$5,588	6.8%	5-Nov-13
77	PCRX	Pacira Pharm.	Drug	14-Aug-13	\$37.66	\$37.66	138	\$5,197	\$46.95	\$6,479	24.7%	7-Nov-13
78	RPTP	Raptor Pharmaceutical	Drug	10-Jul-13	\$10.33	\$10.33	500	\$5,165	\$13.08	\$6,540	26.6%	7-Nov-13
79	EGHT	Eight By Eight	Technology	16-Jul-13	\$8.98	\$8.98	572	\$5,137	\$9.63	\$5,508	7.2%	13-Nov-13
80	OPK	Opko Health	Medical	14-Oct-13	\$10.55	\$10.55	525	\$5,539	\$9.46	\$4,967	-10.3%	19-Nov-13
81	ENSG	Ensign Group	Medical	12-Apr-12	\$35.62	\$35.62	124	\$4,417	\$42.36	\$5,253	18.9%	18-Nov-13

# Bill Gunderson's Model Portfolio for Conservative Growth Investors:

This model is made up of mostly large and mid-cap companies that I consider suitable for investors who have a **conservative growth risk profile**. Time horizon of at least 3-5 years would be appropriate. Large cap stocks have underperformed small caps in 2013.

This portfolio is up **21.16%** year-to-date. This net of an annual mgt. fee of 2.0% and all \$7 trades. NO CHANGES THIS PAST WEEK. Cash level is still 0%. **ACTUAL PORTFOLIOS MAY VARY DEPENDING ON START TIME AND ACTUAL PORTFOLIO MIX.**

Conservative Growth Model <b>21.16%</b> *YTD After Fees													
11/29/2013 (9:00am) <b>22.10%</b> YTD Before Fees													
<b>12.52%</b> *2012 After Fees													
<b>14.71%</b> *2012 Before Fees													
(Net of all \$7 Trading Costs and a 2% annual mgt fee-Internally Audited)													
Actual portfolios may vary depending on when account is opened and actual mix of stocks)													
Add	Add	Add	Add	Adjusted	Beginning	Current	Current	Current	G/L	Alloc.			
Date	Symbol	Name	Sector	Price	Price	Shares	Value	Price	Value	G/L	Alloc.		
1	15-Mar-13	ACT	Actavis	Drug	\$91.59	\$91.59	51	\$4,671	\$163.78	\$8,353	78.8%	5.15%	
2	16-Aug-13	AAPL	Apple Computer	Drug	\$500.00	\$500.00	10	\$5,000	\$553.19	\$5,532	10.6%	3.41%	
3	25-Jul-13	CELG	Celgene	Drug	\$143.18	\$143.18	36	\$5,154	\$162.05	\$5,834	13.2%	3.60%	
4	9-Sep-13	DAL	Delta Airlines	Transport.	\$22.78	\$22.78	221	\$5,034	\$28.96	\$6,400	27.1%	3.94%	
5	10-Jul-13	DLTR	Dollar Tree	Consumer	\$53.84	\$53.84	94	\$5,061	\$55.83	\$5,248	3.7%	3.23%	
6	10-Jul-13	EOG	E O G Resources	Energy	\$143.25	\$143.25	36	\$5,157	\$166.66	\$6,000	16.3%	3.70%	
7	16-Aug-13	FB	Facebook	Internet	\$37.08	\$37.08	137	\$5,080	\$47.06	\$6,447	26.9%	3.97%	
8	25-Jul-13	GILD	Gilead Sciences	Drug	\$60.74	\$60.74	84	\$5,102	\$75.11	\$6,309	23.7%	3.89%	
9	26-Jun-13	ILMN	Illumina	Drug	\$75.73	\$75.73	64	\$4,847	\$97.49	\$6,239	28.7%	3.85%	
10	18-Nov-13	INCY	Incyte	Drug	\$46.96	\$46.96	115	\$5,400	\$47.10	\$5,417	0.3%	3.34%	
11	14-Dec-12	MA	Mastercard	Financial	\$482.30	\$482.30	9	\$4,341	\$763.10	\$6,868	58.2%	4.23%	
12	31-Jul-13	MEOH	Methanex	Energy	\$47.60	\$47.60	109	\$5,188	\$61.81	\$6,737	29.9%	4.15%	
13	14-Nov-13	MHK	Mohawk Industries	Building	\$143.21	\$143.21	35	\$5,012	\$140.63	\$4,922	-1.8%	3.03%	
14	10-Jul-13	NFLX	Netflix	Leisure	\$242.15	\$242.15	21	\$5,085	\$365.28	\$7,671	50.8%	4.73%	
15	8-Nov-13	NUE	Nucor	Basic Mat	\$54.52	\$54.52	100	\$5,452	\$51.17	\$5,117	-6.1%	3.15%	
16	31-Oct-13	NXPI	Nxp Semiconductors	Technology	\$41.10	\$41.10	133	\$5,466	\$42.34	\$5,631	3.0%	3.47%	
17	22-Mar-13	ODFL	Old Dominion Freight	Transport.	\$38.18	\$38.18	105	\$4,009	\$51.67	\$5,425	35.3%	3.34%	
18	12-Jul-13	PCYC	Pharmacyclics Inc.	Drug	\$107.09	\$107.09	47	\$5,033	\$124.82	\$5,867	16.6%	3.62%	
19	16-Sep-13	REGN	Regeneron Pharm.	Drug	\$297.43	\$297.43	18	\$5,354	\$293.35	\$5,280	-1.4%	3.25%	
20	2-Oct-13	PCLN	Priceline.com	Leisure	\$1,065.54	\$1,065.54	5	\$5,328	\$1,195.88	\$5,979	12.2%	3.69%	
21	14-Nov-13	PNR	Pentair Ltd	Industrial	\$69.63	\$69.63	70	\$4,874	\$71.07	\$4,975	2.1%	3.07%	
22	24-Oct-13	PXD	Pioneer Nat. Resources	Energy	\$209.23	\$209.23	26	\$5,440	\$179.25	\$4,661	-14.3%	2.87%	
23	5-Apr-13	TJX	T J Maxx Co.	Consumer	\$47.14	\$47.14	97	\$4,573	\$63.31	\$6,141	34.3%	3.78%	
24	31-Oct-13	TRIP	TripAdvisor	Leisure	\$83.85	\$83.85	65	\$5,450	\$88.35	\$5,743	5.4%	3.54%	
25	19-Apr-13	TSCO	Tractor Supply	Consumer	\$54.03	\$54.03	86	\$4,647	\$73.43	\$6,315	35.9%	3.89%	
26	29-Jun-12	V	Visa	Finance	\$123.11	\$123.11	38	\$4,678	\$204.47	\$7,770	66.1%	4.79%	
27	22-Mar-13	VRX	Valeant Phar.	Drug	\$74.04	\$74.04	53	\$3,924	\$110.01	\$5,831	48.6%	3.59%	
								Total Holdings	\$162,711				
								Total Cash	-\$454				-0.2%
								<b>Current Total Value</b>	<b>\$162,257</b>				
								Begin 2013	\$133,923				
								YTD Tot. Gain/Loss	\$28,334				100.0%
								YTD Pct. Gain/Loss	<b>21.16%</b>				
								2013 Mgt. Fees	\$670				
								2013 Trading Costs (\$7 each)	\$595				
								Total Costs	\$1,265				
								Adj. Gain/Loss	\$29,599				
								Adj. Pct. Gain/Loss	22.10%				
								Begin 2012	\$119,023				
								2012 Gain/Loss	\$17,511				
								Pct. Gain/Loss	<b>14.71%</b>				
								Fees/Cost	\$2,611				
								Adj. Gain/Loss	+	\$14,900			
								Pct. Gain/Loss	<b>12.52%</b>				

I am working on an article for TheStreet.com about the Solar stocks. Am I a bull or a bear?  
 Here is my [current take](#) on one of the bellweather stocks in the sector. (FSLR)

Apple Computer (AAPL) had a fantastic breakout this past week. I continue to add to my position. I told you that it would eventually find a bottom and turn around!



Another oil stock hanging on by the skin of its teeth.



**Netflix is now up over 50% since my most recent buy.**



**I analyzed NXPI on Wednesday's show. It is attempting a breakout.**



***I analyzed Old Dominion on Monday's show. What a great stock!***

**ODFL** Old Dominion Freight Line, Inc. Nasdaq GS + BATS © StockCharts.com

29-Nov-2013 11:50am **Open** 51.56 **High** 51.91 **Low** 51.52 **Last** 51.67 **Volume** 132.0K **Chg** +0.14 (+0.27%) ▲

1/4 ODFL (Daily) 51.67

MA(50) 47.72

MA(200) 42.76

MA(20) 49.05



***And there is Priceline.com The stock of the decade!***

**PCLN** priceline.com Inc. Nasdaq GS + BATS © StockCharts.com

29-Nov-2013 11:50am **Op** 1194.20 **Hi** 1198.75 **Lo** 1191.57 **Last** 1195.46 **Vol** 180.8K **Chg** +8.26 (+0.70%) ▲

1/4 PCLN (Daily) 1195.45

MA(50) 1069.70

MA(200) 877.39

MA(20) 1119.40



**Another energy stock giving me grief. I am holding a VERY short leash!**



**With all of this “peace” in the middle-east, oil prices continue to drop. No wonder the Saudi’s are not too happy these days!**





## 2013 Conservative Growth Model Portfolio Sells

	<u>Bought</u>	<u>Bought</u>	<u>Bought</u>	<u>Sector</u>	<u>Buy Price</u>		<u>Shares</u>	<u>Tot. Buy</u>	<u>Sell Price</u>	<u>Total Sell</u>	<u>Pct. G/L</u>		<u>Sell Date</u>
1	25-May-12	BIIB	Biogen	Drug	\$131.75	\$131.75	36	\$4,743	<b>\$143.79</b>	\$5,176	9.1%	<b>SOLD</b>	11-Jan-13
2	28-Sep-12	WPI	Watson Pharmaceutical	Drug	\$85.76	\$85.76	63	\$5,403	<b>\$83.71</b>	\$5,274	-2.4%	<b>SOLD</b>	11-Jan-13
3	26-Oct-12	LPX	Louisiana Pacific	Building	\$15.54	\$15.54	336	\$5,221	<b>\$21.00</b>	\$7,056	35.1%	<b>SOLD</b>	18-Jan-13
4	29-Jun-12	ALXN	Alexion Pharm.	Drug	\$98.71	\$98.71	48	\$4,738	<b>\$97.69</b>	\$4,689	-1.0%	<b>SOLD</b>	25-Jan-13
5	26-Oct-12	TWC	Time Warner Cable	Media	\$99.52	\$99.52	52	\$5,175	<b>\$87.95</b>	\$4,573	-11.6%	<b>SOLD</b>	1-Feb-13
6	11-Jan-13	E	Eni Spa ads	Oil & Gas	\$51.58	\$51.58	89	\$4,591	<b>\$46.52</b>	\$4,140	-9.8%	<b>SOLD</b>	8-Feb-13
7	8-Jun-12	PETM	Petsmart	Consumer	\$66.24	\$66.24	70	\$4,637	<b>\$66.98</b>	\$4,689	1.1%	<b>SOLD</b>	8-Feb-13
8	11-May-12	AMT	American Tower	Telecom	\$67.86	\$67.86	70	\$4,750	<b>\$74.63</b>	\$5,224	10.0%	<b>SOLD</b>	15-Feb-13
9	23-Nov-12	HDB	H D F C Bank Ltd.	Banks	\$40.17	\$40.17	109	\$4,379	<b>\$38.70</b>	\$4,218	-3.7%	<b>SOLD</b>	22-Feb-13
10	11-Jan-13	ILF	Latin Amer. 40 Index	nternationa	\$45.09	\$45.09	102	\$4,599	<b>\$43.46</b>	\$4,433	-3.6%	<b>SOLD</b>	22-Feb-13
11	28-Dec-12	FXI	China 25 Index	nternationa	\$39.64	\$39.64	112	\$4,440	<b>\$40.19</b>	\$4,501	1.4%	<b>SOLD</b>	22-Feb-13
12	27-Jul-12	REGN	Regeneron Pharm.	Drug	\$137.91	\$137.91	34	\$4,689	<b>\$159.92</b>	\$5,437	16.0%	<b>SOLD</b>	22-Feb-13
13	1-Jun-12	PPG	P P G Industries	Basic Mat.	\$98.96	\$98.96	48	\$4,750	<b>\$136.26</b>	\$6,540	37.7%	<b>SOLD</b>	8-Mar-13
14	30-Nov-12	EBAY	Ebay Inc.	Consumer	\$52.67	\$52.67	85	\$4,477	<b>\$51.05</b>	\$4,339	-3.1%	<b>SOLD</b>	15-Mar-13
15	14-Dec-12	VVO	Vanguard Emg. Mkt. ETF	nternationa	\$43.75	\$43.75	100	\$4,375	<b>\$43.29</b>	\$4,329	-1.1%	<b>SOLD</b>	15-Mar-13
16	11-Jan-13	ASML	A S M L Holding N.v.	Technology	\$65.32	\$65.32	70	\$4,572	<b>\$68.16</b>	\$4,771	4.3%	<b>SOLD</b>	22-Mar-13
17	11-May-12	NVO	Novo Nordisk	Drug	\$145.90	\$145.90	32	\$4,669	<b>\$162.22</b>	\$5,191	11.2%	<b>SOLD</b>	22-Mar-13
18	8-Feb-13	TSM	Taiwan Semiconductor	Technology	\$18.45	\$18.45	250	\$4,613	<b>\$17.06</b>	\$4,265	-7.5%	<b>SOLD</b>	22-Mar-13
19	22-Feb-13	KORS	Michael Kors Hldgs.	Consumer	\$59.15	\$59.15	78	\$4,614	<b>\$55.49</b>	\$4,328	-6.2%	<b>SOLD</b>	22-Mar-13
20	31-Aug-12	CNI	Canadian Natl. Railway	Transport.	\$91.99	\$91.99	52	\$4,783	<b>\$100.30</b>	\$5,216	9.0%	<b>SOLD</b>	5-Apr-13
21	26-Oct-12	XHB	Homebuilders Index	Building	\$25.52	\$25.52	204	\$5,206	<b>\$30.04</b>	\$6,128	17.7%	<b>SOLD</b>	5-Apr-13
22	22-Feb-13	CAM	Cameron Intl. Corp.	Energy	\$63.08	\$63.08	73	\$4,605	<b>\$59.41</b>	\$4,337	-5.8%	<b>SOLD</b>	19-Apr-13
23	25-Jan-13	DHI	D R Horton	Building	\$21.76	\$21.76	215	\$4,678	<b>\$21.63</b>	\$4,650	-0.6%	<b>SOLD</b>	19-Apr-13
24	28-Dec-12	FAST	Fastenal	Building	\$46.88	\$46.88	95	\$4,454	<b>\$47.35</b>	\$4,498	1.0%	<b>SOLD</b>	19-Apr-13
25	8-Feb-13	NBL	Noble Energy	Energy	\$115.36	\$115.36	40	\$4,614	<b>\$106.48</b>	\$4,259	-7.7%	<b>SOLD</b>	19-Apr-13
26	15-Mar-13	PXD	Pioneer Nat. Resources	Energy	\$129.31	\$129.31	36	\$4,655	<b>\$110.72</b>	\$3,986	-14.4%	<b>SOLD</b>	19-Apr-13
27	31-Aug-12	AMZN	Amazon.com	Consumer	\$248.92	\$248.92	19	\$4,729	<b>\$254.81</b>	\$4,841	2.4%	<b>SOLD</b>	26-Apr-13
28	8-Feb-13	CBG	C B R E Group	Real Est.	\$24.08	\$24.41	192	\$4,623	<b>\$23.49</b>	\$4,510	-3.8%	<b>SOLD</b>	24-May-13
29	14-Feb-13	CMCSA	Comcast Corp.	Media	\$40.49	\$40.49	114	\$4,616	<b>\$41.82</b>	\$4,767	3.3%	<b>SOLD</b>	24-May-13
30	5-Oct-12	FMX	Fomento Econ Mex	nternationa	\$95.18	\$95.18	59	\$5,616	<b>\$110.17</b>	\$6,500	15.7%	<b>SOLD</b>	21-May-13
31	1-Feb-13	HNP	Huaneng Pwr Intl ADR	Utility	\$40.67	\$40.67	115	\$4,677	<b>\$43.01</b>	\$4,946	5.8%	<b>SOLD</b>	21-May-13
32	1-Mar-13	LNKD	Linked In	Internet	\$170.46	\$170.46	27	\$4,602	<b>\$177.68</b>	\$4,797	4.2%	<b>SOLD</b>	22-May-13
33	19-Apr-13	AMT	American Tower	Telecom	\$80.88	\$80.88	58	\$4,691	<b>\$78.97</b>	\$4,580	-2.4%	<b>SOLD</b>	29-May-13
34	24-May-13	CELG	Celgene	Drug	\$122.58	\$122.58	41	\$5,026	<b>\$112.64</b>	\$4,618	-8.1%	<b>SOLD</b>	5-Jun-13
35	17-Aug-12	HD	Home Depot	Consumer	\$57.10	\$57.10	83	\$4,739	<b>\$76.75</b>	\$6,370	34.4%	<b>SOLD</b>	4-Jun-13
36	22-Mar-13	SHW	Sherwin Williams	Building	\$168.94	\$168.94	23	\$3,886	<b>\$183.26</b>	\$4,215	8.5%	<b>SOLD</b>	4-Jun-13
37	21-Aug-12	UNP	Union Pacific	Transport.	\$125.19	\$125.19	38	\$4,757	<b>\$151.26</b>	\$5,748	20.8%	<b>SOLD</b>	5-Jun-13
38	26-Apr-13	ONXX	Onyx Pharm.	Medical	\$95.88	\$95.88	50	\$4,794	<b>\$86.44</b>	\$4,322	-9.8%	<b>SOLD</b>	12-Jun-13
39	15-Mar-13	CSX	C S X Corp.	Transport.	\$24.02	\$24.02	193	\$4,636	<b>\$23.88</b>	\$4,609	-0.6%	<b>SOLD</b>	20-Jun-13
40	17-Aug-12	GILD	Gilead Sciences	Drug	\$28.21	\$28.21	168	\$4,739	<b>\$49.94</b>	\$8,390	77.0%	<b>SOLD</b>	20-Jun-13
41	22-Mar-13	PBH	Prestige Brands	Consumer	\$25.18	\$25.18	158	\$3,978	<b>\$28.39</b>	\$4,486	12.7%	<b>SOLD</b>	20-Jun-13
42	5-Apr-13	REGN	Regeneron	Drug	\$185.41	\$185.41	25	\$4,635	<b>\$217.19</b>	\$5,430	17.1%	<b>SOLD</b>	20-Jun-13
43	12-Apr-13	ALKS	Alkermes	Drug	\$24.99	\$24.99	188	\$4,698	<b>\$27.64</b>	\$5,196	10.6%	<b>SOLD</b>	20-Jun-13
44	14-Feb-13	GWW	W W Grainger	Industrial	\$225.20	\$225.20	21	\$4,729	<b>\$249.67</b>	\$5,243	10.9%	<b>SOLD</b>	20-Jun-13
45	17-Apr-13	AMP	Ameriprise Financial	Financial	\$81.69	\$81.69	61	\$4,983	<b>\$77.11</b>	\$4,704	-5.6%	<b>SOLD</b>	24-Jun-13
46	22-Feb-13	BX	Blackstone Group	Financial	\$18.70	\$18.70	247	\$4,619	<b>\$19.40</b>	\$4,792	3.7%	<b>SOLD</b>	24-Jun-13
47	22-Mar-13	CSGP	Costar Group	Real Est.	\$105.02	\$105.02	38	\$3,991	<b>\$133.28</b>	\$5,065	26.9%	<b>SOLD</b>	12-Jul-13
48	22-Mar-13	STZ	Constellation Brands	Food/Bev.	\$46.67	\$46.67	85	\$3,967	<b>\$52.12</b>	\$4,430	11.7%	<b>SOLD</b>	22-Jul-13
49	19-Jul-13	DRC	Dresser-Rand Group Inc.	Energy	\$66.55	\$66.55	74	\$4,925	<b>\$59.60</b>	\$4,410	-10.4%	<b>SOLD</b>	29-Jul-13
50	26-Apr-13	FTI	F M C Technologies	Energy	\$56.74	\$56.74	88	\$4,993	<b>\$53.56</b>	\$4,713	-5.6%	<b>SOLD</b>	29-Jul-13
51	26-Apr-13	CERN	Cerner	Medical	\$47.94	\$47.94	100	\$4,794	<b>\$46.12</b>	\$4,612	-3.8%	<b>SOLD</b>	30-Aug-13
52	27-Aug-13	EEV	Ultrashort Emg. Markets	Inverse	\$26.94	\$26.94	190	\$5,119	<b>\$23.18</b>	\$4,404	-14.0%	<b>SOLD</b>	6-Sep-13
53	22-Mar-13	AZO	Autozone	Auto	\$395.41	\$395.41	10	\$3,954	<b>\$413.45</b>	\$4,135	4.6%	<b>SOLD</b>	16-Sep-13
54	11-Jul-13	RKT	Rock Tenn Co Cl A	Paper	\$107.00	\$107.00	47	\$5,029	<b>\$101.93</b>	\$4,791	-4.7%	<b>SOLD</b>	3-Oct-13
55	26-Apr-13	COG	Cabot Oil & Gas	Energy	\$35.48	\$35.48	140	\$4,967	<b>\$36.09</b>	\$5,053	1.7%	<b>SOLD</b>	2-Oct-13
56	16-Sep-13	ALKS	Alkermes Plc	Drug	\$35.34	\$35.34	140	\$4,948	<b>\$30.26</b>	\$4,236	-14.4%	<b>SOLD</b>	8-Oct-13
57	9-Sep-13	BMRN	Biomarin Pharm.	Drug	\$74.99	\$74.99	72	\$5,399	<b>\$65.42</b>	\$4,710	-12.8%	<b>SOLD</b>	18-Oct-13
58	26-Jun-13	WLP	Wellpoint Healthcare	Drug	\$81.57	\$81.57	58	\$4,731	<b>\$83.80</b>	\$4,860	2.7%	<b>SOLD</b>	24-Oct-13
59	1-Jul-13	CNC	Centene	Healthcare	\$53.06	\$53.06	100	\$5,306	<b>\$60.51</b>	\$6,051	14.0%	<b>SOLD</b>	24-Oct-13
60	17-Apr-13	OCN	Ocwen Financial	Financial	\$44.25	\$44.25	113	\$5,000	<b>\$50.80</b>	\$5,740	14.8%	<b>SOLD</b>	5-Nov-13
61	11-Oct-13	RMD	Resmed Inc.	Medical	\$56.25	\$56.25	95	\$5,328	<b>\$50.90</b>	\$4,836	-9.5%	<b>SOLD</b>	22-Nov-13

# Bill Gunderson's INCOME/GROWTH Model Portfolio

This portfolio is for investors seeking Income along with the possibility of Growth. This is a good mix for retirees who are seeking a CD alternative-albeit with greater risk. This portfolio currently has an average yield of **4.2%**.

This portfolio is now up **19.80%** YTD and **29.97%** since its August 5, 2011 inception. This works out to an annualized rate of **11.60%**. **Bonds anyone?** This is another testament to the importance of being in the right asset classes!

I added PKG this past week. Cash level in this portfolio is now **1.3%**. **ACTUAL PORTFOLIOS MAY VARY depending on start time and actual stock mix.**

Income/Growth Model as of 11/29/13 As of 9:00am Inception Date August 5, 2011				19.80% *YTD (After Fees) Annualized			0.00%						
				20.51% (Before Fees)									
				28.97% Since Inception									
				*(Net of trading costs and 2% annual mgt fee)-Internally audited.									
	Added	Symbol	Name	Sector	Add Price	Adj.Buy Price	Shares	Beg. Value	Current Price	Current Value	G/L	Alloc.	Curr. Yield
1	5-Aug-13	AAPL	Apple Computer	Technology	\$468.55	\$468.55	9.0	\$4,217	\$554.95	\$4,995	18.4%	3.80%	2.5%
2	14-Dec-12	BME	Blackrock Hlth. Science Tr.	Medical	\$29.37	\$27.81	122.0	\$3,583	\$34.14	\$4,165	22.8%	3.17%	4.6%
3	8-Mar-13	BTO	John Hancock Finl Opp Fd	Medical	\$20.28	\$20.28	198.0	\$4,015	\$23.30	\$4,613	14.9%	3.51%	5.6%
4	22-Feb-13	BX	Blackstone Group	Income-Priv. Eq.	\$19.03	\$19.03	210.0	\$3,996	\$28.64	\$6,014	50.5%	4.58%	4.1%
5	21-Jun-13	CLCT	Collector's Universe	Misc.	\$15.83	\$15.83	273.0	\$4,322	\$16.61	\$4,535	4.9%	3.45%	8.9%
6	8-Jul-13	DEST	Destination Maternity	Consumer	\$27.38	\$27.38	155.0	\$4,244	\$30.80	\$4,774	12.5%	3.64%	2.4%
7	26-Jun-13	F	Ford Motor	Auto	\$15.25	\$15.25	250.0	\$3,813	\$17.12	\$4,280	12.3%	3.26%	2.4%
8	5-Apr-13	FUN	Cedair Fair	Leisure	\$40.40	\$40.40	100.0	\$4,040	\$50.15	\$5,015	24.1%	3.82%	5.7%
9	21-Jun-13	HCSG	Healthcare Svcs. Group	Healthcare	\$23.86	\$23.86	165.0	\$3,937	\$29.12	\$4,805	22.0%	3.66%	2.7%
10	4-Oct-13	HP	Helmerich & Payne	Energy	\$74.08	\$74.08	57	\$4,223	\$77.53	\$4,419	4.7%	3.37%	2.8%
11	16-Sep-13	HQH	H & Q Healthcare Fund	Healthcare	\$23.86	\$23.86	180.0	\$4,295	\$25.95	\$4,671	8.8%	3.56%	7.3%
12	13-Jun-13	JPM	J P Morgan	Bank	\$53.80	\$53.80	76.0	\$4,089	\$57.54	\$4,373	7.0%	3.33%	2.9%
13	5-Jul-13	KEY	Keycorp	Bank	\$11.81	\$11.81	347.0	\$4,089	\$12.80	\$4,442	8.4%	3.38%	1.9%
14	4-Nov-13	KKR	K K R & Co.	Finance	\$22.77	\$22.77	185.0	\$4,089	\$23.73	\$4,390	4.2%	3.34%	1.9%
15	21-Jun-13	KYN	Kayne Anderson Mlp Inv.	Energy	\$36.83	\$36.83	105.0	\$3,867	\$37.19	\$3,905	1.0%	2.97%	6.8%
16	27-Jun-13	MDP	Meredith Corp.	Media	\$48.11	\$48.11	81.0	\$3,897	\$53.26	\$4,314	10.7%	3.29%	3.4%
17	21-Oct-11	MMP	Magellan Mid. Ptrs.	Energy	\$31.51	\$29.39	128	\$4,033	\$61.97	\$7,932	110.9%	6.04%	3.8%
18	3-Oct-13	NM	Navios Maritime	Transportation	\$7.48	\$7.48	565	\$4,226	\$7.76	\$4,384	3.7%	3.34%	3.2%
19	29-Nov-13	PKG	Packaging Corp. of Amer.	Consumer	\$61.66	\$61.66	74	\$4,563	\$61.66	\$4,563	0.0%	3.47%	3.2%
20	4-Oct-13	SDRL	Seadrill Ltd.	Energy	\$46.51	\$46.51	91	\$4,232	\$42.85	\$3,899	-7.9%	2.97%	7.9%
21	26-Apr-13	TAXI	Medallion Financial	Finance	\$14.34	\$14.34	283.0	\$4,058	\$17.79	\$5,035	24.1%	3.83%	6.0%
22	8-Jun-12	TCAP	Triangle Capital Corp.	Finance	\$21.39	\$19.68	195.0	\$4,171	\$28.89	\$5,634	46.8%	4.29%	7.4%
23	13-Aug-13	TIS	Orchids Paper Products	Consumer	\$27.90	\$27.90	150.0	\$4,185	\$32.68	\$4,902	17.1%	3.73%	5.0%
24	9-Mar-12	WES	Western Gas Partners	Energy	\$46.62	\$44.76	97.0	\$4,522	\$63.68	\$6,177	42.3%	4.70%	3.7%
25	31-May-12	WFC	Wells Fargo	Bank	\$41.20	\$41.20	98.0	\$4,038	\$44.20	\$4,332	7.3%	3.30%	2.9%
26	8-Jun-12	WHR	Whirlpool Corp.	Building	\$150.63	\$150.53	30.0	\$4,519	\$153.18	\$4,595	1.8%	3.50%	1.7%
27	27-Jun-13	WLP	Wellpoint Inc.	Healthcare	\$81.57	\$81.57	48.0	\$3,915	\$93.09	\$4,468	14.1%	3.40%	1.7%
											AVG. YIELD	<b><u>4.2%</u></b>	
									Current Tot. Holdings	\$129,631	98.7%		
									Current Cash	\$1,678	1.3%		
									Current Total Value	\$131,309	100.0%		
									End 2012	\$109,607			
									2013 YTD Gain	\$21,702			
									2013 YTD Pct.	19.80%			
									2013 YTD Mgt. Fees	\$548			
									2013 YTD Trading Costs	\$231			
									2013 Adj. Gain	\$22,481			
									2013 Adj. Pct.	20.51%			
									BEGIN 2012	\$106,193			
									2012 Gain/Loss (Before Fees)	\$5,679			
									2012 Gain/Loss Pct. (Before Fees)	5.35%			
									Fees (since Inception)	\$548			
									G/L since Inception	\$30,761			
									Adj. Pct. (After Fees)	28.97%			

Notice that there are NO bonds or other interest-rate sensitive investments in my income portfolio! I got out of them over one year ago. [Here](#) is why! Did your advisor get you out bonds????

Blackstone Group continues to hit new highs and pay a good dividend.



Are we having FUN yet?



This dividend portfolio is a very eclectic mix of stocks!



It was raining hard in 'Frisco, I needed one more fare to make my night...



## 2013 Income Model Portfolio Sells

	<u>Bought</u>	<u>Bought</u>	<u>Bought</u>	<u>Sector</u>	<u>Buy Price</u>		<u>Shares</u>	<u>Tot. Buy</u>	<u>Sell Price</u>	<u>Total Sell</u>	<u>Pct. G/L</u>	<u>Sell Date</u>
1	7-Dec-12	MYI	Blackrock Muniyield Quality	Income-Muni	\$16.41	\$16.32	222.0	\$3,643	<b>\$15.73</b>	\$3,492	-3.6%	<b>SOLD</b> 1-Feb-13
2	5-Oct-12	PCN	Pimco Corp. & Inc. Strat.	Income-Bds.	\$19.12	\$18.66	238.0	\$4,551	<b>\$18.67</b>	\$4,443	0.1%	<b>SOLD</b> 8-Feb-13
3	26-Oct-12	OKE	Oneok Inc.	Income-Energy	\$47.17	\$46.81	91.0	\$4,292	<b>\$45.08</b>	\$4,102	-3.7%	<b>SOLD</b> 8-Mar-13
4	9-Sep-11	OKS	Oneok Ptrs.	Energy	\$43.29	\$40.71	91	\$3,939	<b>\$54.01</b>	\$4,915	32.7%	<b>SOLD</b> 8-Mar-13
5	14-Dec-12	RNF	Rentech Nitrogen	Agricultural	\$37.50	\$37.50	96.0	\$3,600	<b>\$35.88</b>	\$3,444	-4.3%	<b>SOLD</b> 29-Mar-13
6	5-Oct-12	TNH	Terra Nitrogen Co. Lp	Income-Comm.	\$215.00	\$215.00	21.0	\$4,515	<b>\$202.92</b>	\$4,261	-5.6%	<b>SOLD</b> 5-Apr-13
7	9-Mar-12	PVD	Admin Fondos Pension	Finance	\$75.31	\$68.21	48.0	\$3,615	<b>\$103.00</b>	\$4,944	51.0%	<b>SOLD</b> 17-May-13
8	19-Oct-12	MSD	MS Emerging Mkt. Debt	Income-Foreign	\$12.17	\$11.82	390.0	\$4,746	<b>\$12.07</b>	\$4,707	2.1%	<b>SOLD</b> 17-May-13
9	12-Oct-12	TEI	Templeton Emg. Mkt. Income	Income-Foreign	\$17.19	\$16.69	277.0	\$4,762	<b>\$16.44</b>	\$4,554	-1.5%	<b>SOLD</b> 17-May-13
10	5-Oct-12	PKO	Pimco Income Opp. Fund	Income-Foreign	\$30.57	\$29.26	149.0	\$4,555	<b>\$30.82</b>	\$4,592	5.3%	<b>SOLD</b> 24-May-13
11	1-Feb-13	ARCC	Ares Capital Corp.	Income-Priv. Eq.	\$17.93	\$17.56	223.0	\$3,998	<b>\$17.33</b>	\$3,865	-1.3%	<b>SOLD</b> 29-May-13
12	5-Oct-12	BKCC	Blackrock Kelso Cap. Corp.	Income-Priv. Eq.	\$10.16	\$9.66	448.0	\$4,552	<b>\$10.05</b>	\$4,502	4.0%	<b>SOLD</b> 31-May-13
13	5-Oct-12	AWF	Alliance Gbl Hi-Income Fund	Income-Foreign	\$15.70	\$14.90	249.0	\$3,909	<b>\$15.19</b>	\$3,782	1.9%	<b>SOLD</b> 3-Jun-13
14	12-Oct-12	ENB	Enbridge Inc.	Income-Energy	\$39.86	\$39.29	112.0	\$4,464	<b>\$41.45</b>	\$4,642	5.5%	<b>SOLD</b> 21-Jun-13
15	4-May-12	EPD	Enterprise Products	Energy	\$52.47	\$50.62	75.0	\$3,935	<b>\$58.53</b>	\$4,390	15.6%	<b>SOLD</b> 20-Jun-13
16	5-Aug-11	KMP	Kinder Morgan	Energy	\$68.03	\$62.36	74	\$5,034	<b>\$81.41</b>	\$6,024	30.5%	<b>SOLD</b> 20-Jun-13
17	5/31/2012	AB	Alliance Bernstein Hld	Finance	\$25.31	\$25.31	165.0	\$4,176	<b>\$19.50</b>	\$3,218	-23.0%	<b>SOLD</b> 5-Jul-13
18	28-Sep-12	BLX	Banco Latinoamericano	Bank	\$22.24	\$21.51	201.0	\$4,470	<b>\$25.04</b>	\$5,033	16.4%	<b>SOLD</b> 12-Jul-13
19	5-Aug-11	OHI	Omega Healthcare	REIT	\$15.82	\$14.08	66	\$1,044	<b>\$33.82</b>	\$2,232	140.2%	<b>Partial Sell</b> 19-Jul-13
20	5-Aug-11	NHI	Nat. Health Investors	REIT	\$40.60	\$36.78	102	\$4,141	<b>\$61.43</b>	\$6,266	67.0%	<b>SOLD</b> 1-Aug-13
21	5-Aug-11	O	Realty Income	REIT	\$30.01	\$27.74	167	\$5,012	<b>\$42.95</b>	\$7,173	54.8%	<b>SOLD</b> 1-Aug-13
22	5-Aug-11	OHI	Omega Healthcare	REIT	\$15.82	\$14.08	200	\$3,164	<b>\$30.12</b>	\$6,024	113.9%	<b>SOLD</b> 1-Aug-13
23	31-May-12	WSR	Whitestone REIT	Real Estate	\$16.41	\$16.41	255.0	\$4,185	<b>\$15.81</b>	\$4,032	-3.7%	<b>SOLD</b> 2-Aug-13
24	19-Apr-13	CXW	Corrections Corp. of America	Service	\$34.85	\$34.85	115.0	\$4,008	<b>\$34.08</b>	\$3,919	-2.2%	<b>SOLD</b> 23-Aug-13
25	18-Jul-13	CPA	Copa Holdings Sa	Transportation	\$141.38	\$141.38	30.0	\$4,241	<b>\$125.61</b>	\$3,768	-11.2%	<b>SOLD</b> 28-Aug-13
26	4-Jun-13	BAH	Booz Hamilton	Services-Govt.	\$17.91	\$17.64	225.0	\$4,030	<b>\$18.56</b>	\$4,176	5.2%	<b>SOLD</b> 9-Oct-13
27	26-Oct-12	BGS	B & G Foods Inc.	Food	\$30.00	\$29.41	147.0	\$4,410	<b>\$33.01</b>	\$4,852	12.2%	<b>SOLD</b> 15-Oct-13
28	21-Jun-13	CALM	Cal-Maine Foods	Food	\$46.78	\$46.78	83.0	\$3,883	<b>\$51.69</b>	\$4,290	10.5%	<b>SOLD</b> 15-Oct-13

# 401-K Section (How is your 401k) portfolio doing?

Everyone has different choices to them in their 401-ks. The choices basically fall into several broad categories however: Large Cap, Mid-Cap, Small-Cap, Govt. Bond, Corp. Bond, Inflation Protected Bond, International, Emerging Market, and maybes sectors like technology, natural resources, etc.

I have added a number of mutual funds to my **Best Stocks Now** database that are representative of the various categories of funds that are available in most 401k plans. I grade them on a daily basis.

If you have a wide selection of mutual funds in your plan, here is my current basic recommendation: This portfolio is up **30.82%** year-to-date (net of all fees and trading costs). No changes this past week. This portfolio is currently FULLY INVESTED.

<b>Mutual Fund Model Portfolio</b>				<b>30.82%</b> (after fees)									
11/28/2013 (Close)				<b>31.92%</b> (before fees)									
(Net of all Trading Costs and a 2% annual mgt fee-Internally Audited)													
<b>Add Date</b>	<b>Symbol</b>	<b>Name</b>	<b>Sector</b>	<b>Add Price</b>	<b>Adjusted Price</b>	<b>Shares</b>	<b>Beginning Value</b>	<b>Current Price</b>	<b>Current Value</b>	<b>G/L</b>	<b>Recc.</b>	<b>Alloc.</b>	
1	31-Dec-12	FBIOX	Fidelity Biotech	Drug	\$109.99	\$109.99	34.09	\$3,750	\$178.71	\$6,092	62.48%	Buy	18.63%
2	13-Sep-13	BUFOX	Buffalo Micro-cap Fund	Micro-Cap	\$17.57	\$17.57	240.00	\$4,217	\$19.45	\$4,668	10.70%	Buy	14.27%
3	31-Dec-12	FBMPX	Fidelity Multimedia	Leisure	\$57.35	\$57.35	65.39	\$3,750	\$79.43	\$5,194	38.50%	Hold	15.88%
4	15-Mar-13	FSESX	Fidelity Selecty Energy Svc.	Energy	\$75.83	\$75.83	48.13	\$3,650	\$84.51	\$4,067	11.45%	Buy	12.44%
5	31-Dec-12	FSCRX	Fidelity Sm. Cap Discovery	Small-Cap	\$24.07	\$24.07	207.73	\$5,000	\$32.09	\$6,666	33.32%	Buy	20.38%
6	8-Mar-13	FMCSX	Fidelity Mid-Cap Stock	Mid-Cap	\$32.78	\$32.78	152.53	\$5,000	\$39.07	\$5,959	19.19%	Buy	18.22%
<b>HOLDINGS</b>										\$32,647			99.8%
<b>CASH</b>										\$58			0.2%
<b>TOTAL</b>										\$32,705			100.0%
<b>Begin 2013</b>										\$25,000			
<b>Gain/Loss-After Fees</b>										\$7,705			
<b>Pct. G/L (After Fees)</b>										30.82%			
<b>Fees/Cost</b>										\$275			
<b>Adj. Gain/Loss</b>										\$7,980			
<b>Pct. Gain/Loss</b>										31.92%			

## 2013 Sells

<b>Add Date</b>	<b>Symbol</b>	<b>Name</b>	<b>Sector</b>	<b>Add Price</b>	<b>Adjusted Price</b>	<b>Shares</b>	<b>Beginning Value</b>	<b>Current Price</b>	<b>Current Value</b>	<b>G/L</b>	<b>Sell Date</b>	
1	31-Dec-12	FHKCX	Fidelity China	Consumer	\$30.66	\$30.66	81.54	\$2,500	\$31.77	\$2,591	3.62%	8-Mar-13
2	31-Dec-12	FSEAX	Fidelity Emg. Asia	International	\$29.89	\$29.89	83.64	\$2,500	\$30.57	\$2,557	2.28%	8-Mar-13
4	31-Dec-12	FMKAX	Fidelity Emg. Markets	International	\$15.30	\$15.30	245.10	\$3,750	\$14.90	\$3,652	-2.61%	15-Mar-13
5	31-Dec-12	FSHOX	Fidelity Housing/Const.	Building	\$48.76	\$48.76	76.91	\$3,750	\$54.64	\$4,202	12.06%	5-Jul-13
6	5-Jul-12	FSRBX	Fidelity Regional Bank Fund	Mid-Cap	\$23.74	\$23.74	180.00	\$4,273	\$24.00	\$4,320	1.10%	12-Sep-13

Bill Gunderson is a professional fee-based money manager. Gunderson Capital Management manages hundreds of accounts all across the country. Minimum account size is \$100,000. Annual Mgt. fees are 2% on accounts under \$250,000, 1.5%-1.75% on accounts between \$250k and \$1 million, and 1% on accounts over \$1 million. Call us for a portfolio evaluation and more info. (855)611-BEST.

To view this past week's show archives click [here](#)

# 401(k) Section (VERY BASIC)

Many folks have a very limited selection of choices in your 401-k. **NO CHANGES THIS WEEK!**

U.S. Large Cap	15.0%
U.S. Mid-Cap	35.0%
U. S. Small-Cap	50.0%
U.S. Bond	
Foreign Bond	0.0%
International Stock	0.0%
Cash	0.0%

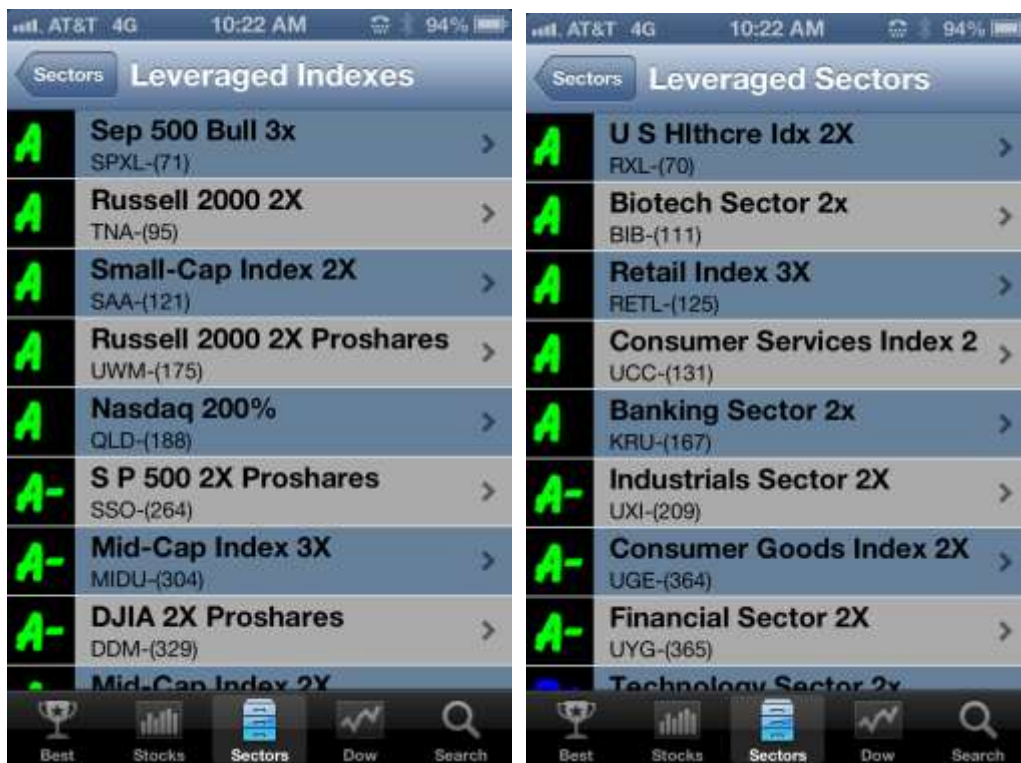
## Bill Gunderson's ETF Model Portfolio

This portfolio is for investors seeking growth. This portfolio is now up **25.88%** YTD. No changes this past week. This portfolio is FULLY INVESTED.

<b>ETF Model Portfolio</b>				<b><u>25.88%</u></b>									
11/29/2013-10am				(Net of all Trading Costs and a 2% annual mgt fee-Internally Audited)									
				<b><u>26.92%</u></b>		(Before fees and costs)							
<b>Add</b>	<b>Date</b>	<b>Symbol</b>	<b>Name</b>	<b>Sector</b>	<b>Add Price</b>	<b>Adjusted Price</b>	<b>Shares</b>	<b>Beginning Value</b>	<b>Current Price</b>	<b>Current Value</b>	<b>G/L</b>	<b>Recc.</b>	<b>Alloc.</b>
1	31-Dec-12	IBB	Biotech Index	Drug	\$137.22	\$137.22	25.00	\$3,431	<b>\$224.64</b>	\$5,616	<b>63.71%</b>	BUY	17.85%
2	15-Mar-13	IJK	Mid Cap Growth	Mid-Cap	\$126.83	\$126.83	23.00	\$2,917	<b>\$146.64</b>	\$3,373	<b>15.62%</b>	BUY	10.72%
3	6-Sep-13	FDN	Internet Index	Technology	\$51.53	\$51.53	75.00	\$3,865	<b>\$56.63</b>	\$4,247	<b>9.90%</b>	BUY	13.50%
4	31-Dec-12	IWM	Russell 2000 Index	Small-Cap	\$84.32	\$84.32	59.00	\$4,975	<b>\$114.15</b>	\$6,735	<b>35.38%</b>	BUY	21.40%
5	15-Mar-13	OIH	Oil Service Sector	Energy	\$43.87	\$43.87	69.00	\$3,027	<b>\$48.64</b>	\$3,356	<b>10.87%</b>	St. Buy	10.66%
6	29-Mar-13	VHT	Healthcare Index (Vanguard)	Mid-Cap	\$82.92	\$82.92	81.00	\$6,717	<b>\$101.70</b>	\$8,238	<b>22.65%</b>	Buy	26.18%
<b>HOLDINGS</b>										<b>\$31,565</b>			<b>100.0%</b>
<b>CASH</b>										<b>-\$95</b>			<b>0.0%</b>
<b>TOTAL</b>										<b>\$31,470</b>			<b>63.5%</b>
<b>Begin 2013</b>										<b>\$25,000</b>			
<b>2013 G/L</b>										<b>\$6,470</b>			
<b>2013 Pct. G/L (before fees)</b>										<b>25.88%</b>			
<b>2013 Fees/Cost</b>										<b>\$261</b>			
<b>Ajd. G/L</b>										<b>\$6,731</b>			
<b>Adj.Pct. Gain/Loss</b>										<b>26.92%</b>			

<b>Add</b>	<b>Date</b>	<b>Symbol</b>	<b>Name</b>	<b>Sector</b>	<b>Add Price</b>	<b>Adjusted Price</b>	<b>Shares</b>	<b>Beginning Value</b>	<b>Current Price</b>	<b>Current Value</b>	<b>G/L</b>	<b>Sell Date</b>
1	31-Dec-12	AIA	Asia 50 Index	International	\$48.15	\$48.15	51.00	\$2,456	<b>\$47.25</b>	\$2,410	<b>-1.87%</b>	26-Jan-13
2	31-Dec-12	VWO	Emerging Mkts. Index	International	\$44.53	\$44.53	84.00	\$3,741	<b>\$44.33</b>	\$3,724	<b>-0.45%</b>	15-Mar-13
3	31-Dec-12	CHN	The China Fund	Consumer	\$21.41	\$21.41	116.00	\$2,484	<b>\$21.45</b>	\$2,488	<b>0.19%</b>	15-Mar-13
4	31-Dec-12	EWX	Emg. Markets Sm. Cap Index	Leisure	\$46.64	\$46.64	80.00	\$3,731	<b>\$47.96</b>	\$3,837	<b>2.83%</b>	29-Mar-13
5	31-Dec-12	FDN	Internet Index	Technology	\$43.20	\$43.20	64.00	\$2,765	<b>\$43.14</b>	\$2,761	<b>-0.14%</b>	29-Mar-13
6	31-Dec-12	XHB	Homebuilders Sel. Index	Building	\$26.60	\$26.60	141.00	\$3,751	<b>\$29.31</b>	\$4,133	<b>10.19%</b>	5-Jul-13
7	5-Jul-13	KRU	Regional Banks 2X	Banking	\$70.46	\$70.46	57.00	\$4,016	<b>\$68.81</b>	\$3,922	<b>-2.34%</b>	6-Sep-13

**COMING IN 2014. BILL GUNDERSON LEVERAGED MODEL PORTFOLIO**



Will it be BIB, UWM, RETL, DDM, QLD, SAA, TNA, ERX, KRU, SSO, SPXL, or inverse leveraged etf's?

**ALSO COMING IN 2014. MELISSA'S COLLEGE FUND.**





Bill Gunderson's Weekly Top 300 List



This is just an appetizer, here is the main course:

# Bill Gunderson's

## Best Stocks Now

### Top 300 as of 11/29/2013

			One	Six	Three	Two	Six	One	Two	One	Yest.	Current
			Year Ago	Mos. Ago	Mos. Ago	Mos. Ago	Wks. Ago	Mo. Ago	Wks. Ago	Wk. Ago		
			<u>Rank</u>	<u>Rank</u>	<u>Rank</u>	<u>Rank</u>	<u>Rank</u>	<u>Rank</u>	<u>Rank</u>	<u>Rank</u>	<u>Rank</u>	<u>Rank</u>
A+	BBSI	Barrett Business Svcs	1	5	48	24	87	13	8	7	1	1
A+	ALK	Alaska Air Group Inc	7	212	81	51	49	104	3	3	9	2
A+	INCY	Incyte Corp	195	7	2	3	25	78	55	6	3	3
A+	NUS	Nu Skin Enterprises, Inc	582	1	6	13	1	3	1	4	2	4
A+	ILMN	Illumina Inc	3	89	151	249	20	8	2	11	18	5
A+	BIIB	Biogen Idec Inc	132	243	29	93	43	39	48	30	85	6
A+	SLXP	Salix Pharmaceuticals Ltd	120	127	382	145	208	254	156	20	5	7
A+	DAL	Delta Air Lines	2597	186	86	7	110	132	5	1	4	8
A+	PRGO	Perrigo Co	699	429	318	380	575	149	53	26	7	9
A+	CMN	Cantel Medical	43	95	23	1	3	4	22	40	50	10
A+	ANIK	Anika Therapeutics Inc	1572	19	65	45	92	88	38	45	72	11
A+	WST	West Pharmaceutical Svcs	593	59	189	154	10	12	43	29	23	12
A+	FIZZ	National Beverage Corp	1504	1062	1274	1187	1043	895	149	168	53	13
A+	ACHC	Acadia Healthcare	0	25	45	35	192	50	9	19	40	14
A+	GILD	Gilead Sciences Inc	45	115	35	75	19	35	15	10	10	15
A+	ISIS	ISIS Pharmaceuticals Inc	2862	501	74	102	390	529	238	435	21	16
A+	PRIM	Primoris Services Corp	1267	500	541	614	708	1104	744	13	11	17
A+	SPLK	Splunk	0	298	9	30	199	161	198	69	12	18
A	ACET	Aceto Corp	179	90	500	267	361	319	167	35	43	19
A	DXCM	Dexcom	1043	48	83	116	31	115	23	43	28	20
A	CRVL	Corvel Corp	1286	84	91	41	12	101	111	107	16	21
A	ACT	Actavis Inc.	117	56	103	114	86	70	13	41	27	22
A	RMTI	Rockwell Med Tech Inc	2627	1546	549	44	76	98	124	32	19	23
A	MNRO	Monro Muffler Brake Inc	626	641	872	708	559	246	183	152	49	24
A	HIMX	HiMax	3058	935	574	577	1743	1694	368	457	100	25
A	FIX	Comfort Systems USA	1958	823	1352	1157	650	478	10	17	15	26
A	BCOR	Bluecora	524	269	465	559	595	908	39	36	20	27
A	DDD	Three D Systems Inc.	169	1894	1259	2080	1635	21	44	166	8	28
A	MWIV	M W I Veterinary Supply	65	22	278	232	108	207	290	286	334	29
A	CP	Canadian Pacific Railway	51	334	250	193	59	33	14	9	22	30
A	MEOH	Methanex Corp	303	166	72	52	173	245	374	57	29	31
A	TSCO	Tractor Supply Co	160	192	164	46	1044	18	26	22	14	32
A	PSMT	PriceSmart Inc	144	369	153	182	58	150	184	5	24	33
A	AKRX	Akorn Inc.	109	57	4	10	27	47	28	129	13	34
A	BWLD	Buffalo Wild Wings Inc	934	612	241	187	29	188	4	21	6	35
A	VFC	VF Corp	249	351	350	539	209	170	114	34	25	36
A	URI	United Rentals Inc	113	211	228	71	50	83	41	99	46	37
A	KERX	Keryx Biopharmaceuticals	1976	341	277	272	212	228	86	108	33	38
A	FELE	Franklin Electric Co	570	147	330	302	724	1046	473	337	371	39
A	CIR	CIRCOR Intl Inc	2463	1040	1539	1177	978	429	71	54	38	40
A	PCLN	Priceline.com Inc	24	26	73	20	61	71	109	14	17	41
A	TYL	Tyler Technologies Inc	81	233	259	33	85	5	16	28	26	42
A	LNG	Cheniere Energy Inc	0	388	11	17	21	10	33	38	31	43
A	OPEN	Open Table	2672	6	222	773	191	1523	30	82	131	44
A	PRFT	Perficient Inc	1180	411	702	542	560	2062	764	228	47	45
A	HEES	H & E Equip. Svcs.	0	1092	714	901	2250	551	20	16	32	46
A	TRIP	Tripadvisor	0	871	1200	1194	346	121	190	44	57	47
A	ELN	Elan Corp PLC	2675	432	707	584	416	295	129	100	90	49
A	CELG	Celgene Corp	154	40	15	25	28	276	201	220	60	50

# Bill Gunderson's

## Best Stocks Now

### Top 300 as of 11/29/2013

			One	Six	Three	Two	Six	One	Two	One	Yest.	Current
			Year Ago	Mos. Ago	Mos. Ago	Mos. Ago	Wks. Ago	Mo. Ago	Wks. Ago	Wk. Ago		
			<u>Rank</u>	<u>Rank</u>	<u>Rank</u>	<u>Rank</u>	<u>Rank</u>	<u>Rank</u>	<u>Rank</u>	<u>Rank</u>	<u>Rank</u>	<u>Rank</u>
A	GPT	Gogo Inc.		0	0	0	1990	1800	711	1056	36	<b>51</b>
A	SHLO	Shiloh Ind Inc	1218	2670	1941	1868	1568	505	745	886	37	<b>52</b>
A	CRR	Carbo Ceramics Inc	452	602	378	374	228	354	58	46	93	<b>53</b>
A	PAM	Pampa Energia Sa Adr	2999	892	7	81	18	1294	1877	2312	39	<b>54</b>
A	MINI	Mobile Mini Inc	544	830	422	298	409	312	144	136	87	<b>56</b>
A	AOS	Smith AO Corp	15	82	37	42	14	14	27	39	41	<b>57</b>
A	PKD	Parker Drilling Co	2214	2710	2762	2514	1697	1703	990	72	42	<b>58</b>
A	THRM	Amerigon Inc	1546	657	309	301	355	148	65	56	44	<b>59</b>
A	LII	Lennox Internarional Inc	148	267	75	68	139	138	40	23	62	<b>60</b>
A	ICON	Iconix Brand Group Inc	1833	485	1138	1322	1672	561	64	64	35	<b>61</b>
A	CSII	Cardiovascular Systems	0	448	1772	1565	81	59	84	106	45	<b>62</b>
A	ADS	Alliance Data Systems Corp	288	100	110	96	37	54	52	79	81	<b>63</b>
A	SFUN	Soufun Hldgs.	0	781	1226	1917	2194	1602	1496	786	48	<b>64</b>
A	TWC	Time Warner Cable Inc	329	1542	1231	2206	1825	1214	1528	1653	63	<b>65</b>
A	ENDP	Endo Pharm Hldgs Inc	1675	1463	986	1221	1205	1889	618	91	92	<b>66</b>
A	BIPIX	Profunds Biotech Ultra	86	320	36	76	63	157	212	109	70	<b>67</b>
A	RGR	Sturm, Ruger & Co. Inc	4	124	51	65	206	80	272	61	59	<b>68</b>
A	RLI	RLI Corp	418	893	676	855	495	110	173	89	111	<b>69</b>
A	NFLX	Netflix, Inc	236	64	19	54	11	40	25	36	61	<b>70</b>
A	P	Pandora Media Inc.	2331	163	38	98	109	106	31	569	52	<b>71</b>
A	JACK	Jack in the Box Inc	1506	786	2199	1844	1845	2281	474	376	127	<b>72</b>
A	NEOG	Neogen Corp	46	354	182	89	5	6	18	31	55	<b>73</b>
A	PZZA	Papa John's International Inc	664	143	348	425	437	58	123	73	56	<b>74</b>
A	DAVE	Famous Dave's of America Inc	2167	507	670	600	758	612	92	135	67	<b>75</b>
A	STN	Stantec Inc.	0	0	0	0	0	0	0	51	58	<b>78</b>
A	TPL	Texas Pacific Land Trust	254	83	1144	656	114	94	174	154	78	<b>79</b>
A	ODC	Oil-Dri Corp America	869	522	804	530	741	689	794	80	74	<b>80</b>
A	WAB	Wabtec Corp	344	138	63	15	47	60	96	47	82	<b>81</b>
A	WWW	Wolverine World Wide Inc	369	148	252	285	306	281	215	226	83	<b>82</b>
A	RFIL	R F Industries	2851	1116	376	369	95	74	125	130	64	<b>83</b>
A	TA	TravelCenters America	3112	1814	1280	1454	1597	1505	1184	1140	34	<b>84</b>
A	HALO	Halozyme Ther.	0	0	0	0	168	195	192	167	66	<b>86</b>
A	AIRM	Air Methods Corp	217	160	296	196	215	183	159	102	129	<b>87</b>
A	BX	Blackstone Group	2236	621	166	253	93	32	219	121	68	<b>88</b>
A	LECO	Lincoln Electric Holdings	272	558	466	437	44	31	24	48	75	<b>89</b>
A	ALKS	Alkermes Inc	255	187	78	377	362	129	217	63	108	<b>90</b>
A	ANDE	Andersons Inc	870	141	174	144	290	282	232	316	314	<b>91</b>
A	CEMP	Avis Budget Group	0	1948	485	62	52	1280	1090	434	158	<b>92</b>
A	XTXI	Crosstex Energy Inc	2581	1804	830	831	79	42	82	105	102	<b>93</b>
A	DYAX	Dyax	671	645	666	147	210	82	180	237	113	<b>95</b>
A	BMY	Bristol-Myers Squibb Co	1702	1524	639	486	485	297	98	117	104	<b>96</b>
A	ABC	Amerisourcebergen Corp	257	205	109	150	68	67	57	60	73	<b>97</b>
A	WTS	Watts Water Tech	433	117	111	140	262	193	143	134	112	<b>98</b>
A	VASC	Vascular Solutions Inc	95	307	403	439	115	144	150	68	115	<b>99</b>
A	ODFL	Old Dominion Freight Lines	49	81	52	53	133	229	236	157	99	<b>100</b>

# Bill Gunderson's

## Best Stocks Now

### Top 300 as of 11/29/2013

			One	Six	Three	Two	Six	One	Two	One	Yest.	Current
			Year Ago	Mos. Ago	Mos. Ago	Mos. Ago	Wks. Ago	Mo. Ago	Wks. Ago	Wk. Ago	Rank	Rank
			<u>Rank</u>	<u>Rank</u>	<u>Rank</u>	<u>Rank</u>	<u>Rank</u>	<u>Rank</u>	<u>Rank</u>	<u>Rank</u>	<u>Rank</u>	<u>Rank</u>
A	UCC	Consumer Services Index 2X	713	714	125	172	123	131	206	112	117	<b>101</b>
A	DW	Drew Ind Inc	308	104	379	119	105	90	47	52	109	<b>102</b>
A	IBB	Biotech Index	358	254	53	101	196	467	386	216	107	<b>103</b>
A	GENE	Genie Energy		0	519	1914	1786	1314	420	291	215	<b>104</b>
A	GENT	Gentium		0	475	737	260	270	12	18	79	<b>105</b>
A	ACQ.TC	Autocandada	0	0	0	0	53	103	271	447	376	<b>106</b>
A	LTS	Ladenburg Thalmann	0	0	0	0	1030	642	370	219	80	<b>107</b>
A	GMK	Gruma SA de CV Adr	2049	586	551	537	488	440	95	174	91	<b>108</b>
A	MA	Mastercard	97	96	160	184	46	52	139	111	110	<b>109</b>
A	ALGT	Allegiant Travel	429	218	495	414	179	373	221	178	193	<b>110</b>
A	JAZZ	Jazz Pharmaceuticals plc	106	11	41	162	67	136	116	27	54	<b>111</b>
A	MKTX	Marketaxess Hldg.	0	0	0	0	0	0	0	155	101	<b>112</b>
A	SNHY	Sun Hydraulics	0	550	536	521	451	547	646	714	77	<b>113</b>
A	IEX	IDEX Corp	235	197	113	104	73	68	59	55	122	<b>114</b>
A	JKS	Jinksolar Hldg.	2113	72	82	80	106	346	132	175	94	<b>115</b>
A	TREX	Trex Company Inc	10	556	505	229	397	56	72	128	71	<b>116</b>
A	ATRO	Astronics Corp	2086	47	25	72	78	84	74	93	84	<b>117</b>
A	CERN	Cerner Corp	12	278	139	88	4	26	42	49	95	<b>118</b>
A	MOG-A	Moog Inc.	2055	1407	471	508	498	847	377	373	185	<b>119</b>
A	BIB	Biotech Sector 2x	1128	358	84	84	342	2414	767	251	140	<b>120</b>
A	PCRX	Pacira Pharmaceuticals	1131	77	10	16	101	261	550	326	96	<b>121</b>
A	SLCA	U S Silica Hldgs.	0	854	657	1027	124	142	62	315	118	<b>122</b>
A	DUST	Goldminers 3X Inverse		3212	1269	1296	3290	2962	3169	1762	97	<b>123</b>
A	RNET	Altisource Asst. Mgt.	0	0	333	668	664	806	1115	592	144	<b>124</b>
A	HQH	Heartland Payment Systems		0	145	372	455	516	521	218	125	<b>125</b>
A	TRMB	Trimble Navigation Ltd	21	1117	226	183	473	134	127	70	124	<b>126</b>
A	FRM	Furmanite Corp.	3172	1124	1689	1523	1250	1363	365	394	360	<b>127</b>
A	AMZN	Amazon.com Inc	143	234	267	297	236	44	56	77	154	<b>128</b>
A	TASR	Taser Intl Inc	825	355	516	490	726	29	50	58	98	<b>129</b>
A	YHOO	Yahoo! Inc	1749	948	1142	295	298	404	486	184	123	<b>130</b>
A	AFSI	Amtrust Fin. Svcs.	56	58	171	90	309	396	130	206	130	<b>131</b>
A	SM	S M Energy Co	1297	894	824	557	472	422	730	754	51	<b>133</b>
A	EFN.TO	Element Financial Co.		725	195	579	2342	1087	1243	425	105	<b>134</b>
A	UDOW	DJIA 3X	0	2490	244	1691	802	535	570	270	149	<b>135</b>
A	UPRO	S & P 500 3X	0	1304	133	337	218	272	285	191	204	<b>136</b>
A	CBST	Cubist Pharmaceuticals	468	27	148	136	187	407	472	687	408	<b>137</b>
A	UNTD	United Online Inc	2054	1692	2600	2773	2530	734	951	1174	114	<b>138</b>
A	SAVE	Spirit Airlines	1612	2860	1803	1846	1518	1108	1449	1548	116	<b>139</b>
A	PSIX	Power Solutions	0	0	0	0	0	143	63	75	30	<b>141</b>
A	EXAM	Examworks	0	0	0	0	0	0	1373	977	120	<b>142</b>
A	CBM	Cambrex Corp	2728	1475	2511	1647	1558	919	302	308	250	<b>143</b>
A	DXPE	DXP Enterprises Inc	92	108	197	206	177	250	49	94	86	<b>144</b>
A	RENT	Rentrak Corp	304	1140	569	489	561	443	545	67	139	<b>145</b>
A	UHAL	Amerco	57	356	402	428	410	398	525	230	134	<b>146</b>
A	SNAK	Inventure Foods Inc.	0	1026	927	797	801	820	1196	1158	69	<b>147</b>
A	VNET	Twenty One Vianet	1238	758	1398	1286	1777	1337	1404	1636	344	<b>149</b>
A	WINA	Winmark Corp	239	165	154	454	466	530	428	485	146	<b>150</b>

# Bill Gunderson's

Best Stocks Now

Top 300 as of 11/29/2013

			One	Six	Three	Two	Six	One	Two	One	Yest.	Current
			Year Ago	Mos. Ago	Mos. Ago	Mos. Ago	Wks. Ago	Mo. Ago	Wks. Ago	Wk. Ago	Rank	Rank
			Rank	Rank	Rank	Rank	Rank	Rank	Rank	Rank	Rank	Rank
A	SFG	StanCorp Financial Grp	1093	884	2046	1573	1370	1321	1232	1217	180	<b>151</b>
A	ACIW	A C I Worldwide	192	195	273	100	185	348	244	363	424	<b>152</b>
A	OTEX	Open Text Corp	394	617	600	662	623	451	330	190	157	<b>153</b>
A	NXPI	N X P Semiconductors	295	103	336	874	149	51	54	90	128	<b>154</b>
A	DQ	Dago New Energy Corp.	0	1128	232	237	253	209	177	232	132	<b>155</b>
A	IEP	Icahn Ent.		0	0	0	138	177	178	234	119	<b>156</b>
A	CFX	Colfax	1482	62	93	188	213	393	303	110	328	<b>157</b>
A	YY	YY Inc.	0	0	0	0	0	0	0	0	163	<b>158</b>
A	SWFT	Swift Transportation	0	193	373	85	219	230	321	459	76	<b>159</b>
A	HBI	Hanes Brands	1181	18	54	134	325	343	179	172	133	<b>160</b>
A	NNI	Nelnet Inc	60	274	511	209	65	48	60	138	188	<b>161</b>
A	MPWR	Monolithic Power Systems	852	418	667	783	761	197	250	126	206	<b>162</b>
A	DIS	Walt Disney Co	867	1657	538	465	270	253	398	339	400	<b>163</b>
A	FUL	Fuller HB Co	403	891	418	87	64	91	87	98	126	<b>164</b>
A	SGMO	Sangamo Biosciences Inc	2809	116	529	108	1289	2811	2777	1307	219	<b>165</b>
A	UXI	Industrials Sector 2X	1910	853	234	220	147	182	231	148	136	<b>166</b>
A	DGI	Digitalglobe Inc	679	1860	1875	3065	3373	2372	463	173	186	<b>167</b>
A	HGR	Hanger Orthopedic Grp	265	574	563	375	528	280	347	358	361	<b>168</b>
A	PII	Polaris Industries Inc	111	73	31	99	134	140	172	208	159	<b>169</b>
A	SBUX	Starbucks Corp	115	69	120	152	62	73	100	76	161	<b>170</b>
A	TAXI	Medallion Financial Corp	449	258	283	286	400	410	417	268	162	<b>171</b>
A	KRU	Banking Sector 2x	2381	299	1266	794	429	721	380	404	244	<b>172</b>
A	KKD	Krispy Kreme Doughnuts Inc	508	118	560	291	156	192	199	179	247	<b>173</b>
A	EPAY	Bottomline Technologies	1890	344	827	505	157	116	249	236	190	<b>174</b>
A	CCOI	Cogent Communications Group	1717	628	1322	1273	901	864	351	467	364	<b>175</b>
A	RES	RPC Inc	719	470	419	326	38	24	36	66	121	<b>176</b>
A	BWS	Brown Shoe	833	634	983	1108	1360	1367	758	428	353	<b>177</b>
A	MDCO	Medicines Co	2415	945	987	759	190	337	289	119	167	<b>178</b>
A	RRGB	Red Robin Gourmet Burgers	538	305	381	141	169	225	46	53	143	<b>179</b>
A	CCIX	Coleman Cable	2513	2633	2305	1809	2114	979	283	159	201	<b>180</b>
A	ABTL	Autobytel	0	1379	545	434	217	256	369	233	274	<b>182</b>
A	GNC	G N C Holdings	859	43	107	92	241	61	104	78	249	<b>183</b>
A	AEIS	Advanced Energy Inds	2348	2438	2805	2197	1762	1595	781	608	486	<b>184</b>
A	BABY	Natus Medical Inc	1396	2196	2858	2998	1428	1186	479	757	208	<b>185</b>
A	PCCC	PC Connection Inc	2588	1022	975	613	642	102	103	221	168	<b>186</b>
A	WETF	WisdomTree Investments	1023	1424	1452	869	845	672	766	973	176	<b>187</b>
A	PNR	Pentair Ltd	1318	201	339	279	364	352	224	120	202	<b>188</b>
A	DWRE	Demandware Inc.	0	121	243	287	265	367	101	131	148	<b>189</b>
A	TQQQ	DJIA 3X	0	184	134	95	82	99	146	132	150	<b>190</b>
A	UBNT	Ubiquiti Networks	1237	712	1258	1125	1304	1196	1402	140	151	<b>191</b>
A	NLSN	Nielsen Hldgs.	1524	817	595	731	503	96	83	65	103	<b>192</b>
A	CTSH	Cognizant Tech Sol CI A	800	353	155	112	120	46	68	116	177	<b>193</b>
A	EAT	Brinker International Inc	968	1079	2072	2192	1058	921	260	249	196	<b>194</b>
A	HXL	Hexcel Corp	746	1098	889	810	652	523	117	142	179	<b>195</b>
A	KSU	Kansas City Southern	443	408	223	292	16	22	34	15	156	<b>196</b>
A	PDLI	P D L Biopharma	908	1866	1492	2518	2185	1999	1812	209	200	<b>197</b>
A	SYNT	Syntel Inc	205	383	585	543	658	691	799	1104	297	<b>198</b>
A	SKX	Skechers USA Inc CI A	2263	632	1183	1600	1887	1485	921	1057	216	<b>199</b>
A	ATHN	Athenahealth	1263	569	204	167	6	2	7	8	189	<b>200</b>

# Bill Gunderson's

Best Stocks Now

Top 300 as of 11/29/2013

		One	Six	Three	Two	Six	One	Two	One	Yest.	Current	
		Year Ago	Mos. Ago	Mos. Ago	Mos. Ago	Wks. Ago	Mo. Ago	Wks. Ago	Wk. Ago	Rank	Rank	
		Rank	Rank	Rank	Rank	Rank	Rank	Rank	Rank	Rank	Rank	
A	DRTX		0	888	1402	768	622	75	2	567	<b>201</b>	
A	TEN	518	224	268	122	225	204	227	323	147	<b>203</b>	
A	VRX	108	2	76	9	8	41	208	362	262	<b>204</b>	
A	AFFX	3155	1338	1900	1634	784	446	413	488	381	<b>205</b>	
A	BEAV	346	161	104	115	131	141	141	151	160	<b>206</b>	
A	MFRI	3096	2286	2256	2503	2139	1891	2425	2354	142	<b>207</b>	
A	ONVO	0	0	0	0	0	0	0	0	164	<b>208</b>	
A-	LKQ	50	35	28	8	13	137	209	103	218	<b>209</b>	
A-	MCK	565	768	774	685	396	86	137	115	184	<b>210</b>	
A-	CBI	1031	466	196	165	69	79	106	196	155	<b>211</b>	
A-	ECL	415	450	312	402	205	227	107	118	197	<b>212</b>	
A-	HVT	391	1042	1378	905	1609	922	348	276	194	<b>213</b>	
A-	WHR	191	276	272	180	547	405	214	183	165	<b>214</b>	
A-	CMCSA	138	457	190	215	132	179	235	197	166	<b>215</b>	
A-	ANAC	431	46	494	55	77	53	305	158	169	<b>216</b>	
A-	SPR	2696	3052	2873	2726	2448	1718	1478	1345	170	<b>217</b>	
A-	LOPE	0	0	0	0	0	300	306	292	267	<b>218</b>	
A-	HTHT	1783	713	2038	2214	1851	1410	128	472	421	<b>219</b>	
A-	LORL	22	151	94	241	345	77	253	199	253	<b>220</b>	
A-	BA	1426	478	167	191	160	123	112	137	195	<b>221</b>	
A-	MEG	3134	1810	1600	979	259	266	322	690	173	<b>222</b>	
A-	YINN	0	0	0	0	0	0	0	305	232	<b>223</b>	
A-	HAR	2611	670	2334	1235	1080	731	223	275	198	<b>224</b>	
A-	NKE	312	483	564	469	406	126	118	169	174	<b>225</b>	
A-	STZ	1206	435	147	194	84	92	181	322	137	<b>226</b>	
A-	TJX	153	136	247	225	214	112	152	189	175	<b>227</b>	
A-	NM	2530	371	246	103	527	169	213	139	141	<b>228</b>	
A-	ENSG	743	190	136	168	249	257	175	469	213	<b>229</b>	
A-	ARII	475	200	305	210	162	198	81	160	233	<b>230</b>	
A-	SVA	2797	273	144	113	310	760	394	514	203	<b>231</b>	
A-	CMG	347	1162	409	312	41	43	37	71	178	<b>232</b>	
A-	BR	1687	726	1361	963	238	239	160	186	217	<b>233</b>	
A-	SHPG	1152	579	611	746	508	454	703	828	210	<b>234</b>	
A-	GLL	3047	3404	1943	1982	3405	3297	2197	2390	182	<b>235</b>	
A-	FN		0	0	1028	1443	2239	186	114	235	<b>236</b>	
A-	ORBC	0	0	386	1281	1208	1028	830	979	245	259	<b>237</b>
A-	EVK	0	0	0	124	203	190	1407	866	153	<b>238</b>	
A-	CVS	936	1589	740	1110	649	420	240	213	240	<b>239</b>	
A-	LCC	152	931	245	309	125	180	147	185	183	<b>240</b>	
A-	XTEX	0	2458	1814	1174	233	167	239	187	220	<b>241</b>	
A-	AYI	485	202	199	86	40	109	94	88	268	<b>242</b>	
A-	MANH	979	270	525	506	23	16	51	162	187	<b>243</b>	
A-	ALNY	2182	21	30	14	311	653	1107	1255	345	<b>246</b>	
A-	UAL	1733	2829	1704	2478	3297	2164	2344	1606	145	<b>248</b>	
A-	BMRN	14	259	8	31	556	867	1295	281	264	<b>249</b>	
A-	FBDIX	708	174	18	61	334	679	1041	495	336	<b>251</b>	

**Bill Gunderson's****Best Stocks Now****Top 300 as of 11/29/2013**

		One	Six	Three	Two	Six	One	Two	One	Yest.	Current	
		Year Ago	Mos. Ago	Mos. Ago	Mos. Ago	Wks. Ago	Mo. Ago	Wks. Ago	Wk. Ago	Rank	Rank	
		Rank	Rank	Rank	Rank	Rank	Rank	Rank	Rank	Rank	Rank	
A-	GOOG	Google	1228	1734	1727	2357	1460	1116	315	285	333	<b>252</b>
A-	MHK	Mohawk Ind Inc	878	328	582	411	529	310	361	250	227	<b>253</b>
A-	TTC	Toro Co	40	167	295	70	89	65	91	225	228	<b>254</b>
A-	ALGN	Align Tech Inc	767	111	70	177	55	75	73	81	229	<b>255</b>
A-	SES.TC	Secure Energy Services	2004	1238	1127	965	757	696	948	954	199	<b>256</b>
A-	FEIC	FEICo	158	156	100	97	229	205	182	283	230	<b>257</b>
A-	TRIB	Tri-S Security Corp	700	183	209	59	83	117	188	211	214	<b>258</b>
A-	FBIOX	Fidelity Biotech	264	210	33	50	175	549	895	497	276	<b>260</b>
A-	LOCK		0	0	0	1026	2633	1113	61	290	273	<b>262</b>
A-	PKG	Packaging Corp of America	862	120	173	143	135	63	99	143	287	<b>263</b>
A-	FCFS	First Cash Financial Services	25	220	200	203	66	105	108	170	269	<b>264</b>
A-	RGEN	Repligen Corp	256	805	1252	726	2585	1609	937	229	209	<b>265</b>
A-	ULTI	Ultimate Software	185	12	49	138	164	120	89	62	238	<b>266</b>
A-	AMP	Ameriprise Financial Inc	1137	126	179	222	128	165	165	240	212	<b>267</b>
A-	HLF	Herbalife	1329	476	603	752	2243	3105	810	399	332	<b>268</b>
A-	LO	Lorillard Inc	444	1704	1300	1450	905	688	110	123	356	<b>269</b>
A-	OPK	Opko Health	0	0	117	4	2	9	32	627	243	<b>270</b>
A-	FLT	Fleetcor Technologies	58	561	177	218	442	362	189	271	252	<b>271</b>
A-	HNH	Handy & Harman Ltd.	1409	239	264	341	337	1112	268	329	256	<b>273</b>
A-	CLDX	Celldex Therapeutics	2104	237	143	109	1075	1335	917	964	299	<b>276</b>
A-	RUTH	Ruths Hospitality Group	175	1031	2429	1805	1716	1660	1577	446	207	<b>277</b>
A-	SAIA	Saia Inc.	896	473	363	412	399	277	282	442	221	<b>278</b>
A-	DDM	DJIA 2X Proshares	2092	1672	426	1351	612	471	433	314	270	<b>279</b>
A-	FBT	Biotech Index-First Trust	221	442	67	273	403	837	497	203	385	<b>281</b>
A-	VRTS	Virtus Investment Ptrs.	1022	741	1437	1446	492	176	255	349	272	<b>282</b>
A-	INSY	Insys Ther.	0	0	0	0	1149	984	696	352	211	<b>283</b>
A-	KKR	K K & R Co.	0	0	0	0	0	178	102	95	275	<b>284</b>
A-	PCYC	Pharmacyclics Inc	490	8	3	6	35	414	376	287	358	<b>285</b>
A-	LUV	Southwest Airlines Co	2633	2193	1691	1507	1926	1622	372	341	261	<b>287</b>
A-	CGNX	Cognex Corp	1126	134	141	129	388	163	280	364	294	<b>288</b>
A-	SSYS	Stratasys Inc.	338	45	270	385	142	114	298	164	343	<b>289</b>
A-	OILT	Oiltanking Ptrs.	711	564	532	548	847	507	971	50	192	<b>290</b>
A-	IHE	Pharmaceutical Index	1024	490	404	445	571	697	801	242	330	<b>291</b>
A-	UYG	Financial Sector 2X	2127	1989	933	1396	910	1134	972	668	477	<b>292</b>
A-	ROIA	Radio One Inc	3023	1055	837	370	242	224	334	426	265	<b>293</b>
A-	TPLM	Triangle Petroleum	1690	1518	1308	968	733	1143	1183	1353	225	<b>294</b>
A-	SXL	Sunoco Logistic Parnters	85	172	425	406	371	45	80	144	236	<b>296</b>
A-	ECPG	Encore Capital	243	63	224	2	9	28	69	397	308	<b>297</b>
A-	IGTE	IGate Corp	786	536	780	631	611	491	228	346	295	<b>298</b>
A-	TIS	Orchids Paper Products	0	132	343	324	234	139	226	304	302	<b>299</b>
A-	MHFI	McGraw Hill Fin.	0	0	0	1180	981	1120	1212	332	322	<b>300</b>

**Bill Gunderson is a professional fee-based money manager. Gunderson Capital Management manages hundreds of accounts all across the country. Minimum account size is \$100,000. Annual Mgt. fees are 2% on accounts under \$250,000, 1.5%-1.75% on accounts between \$250k and \$1 million, and 1% on accounts over \$1 million. Call us for a portfolio evaluation and more info. (855)611-BEST.**

Click [HERE](#) to find out how we deploy cash once your account is opened



My Best Stocks Now Radio Hour is heard on the Salem Broadcast Network every weekday. Check your local affiliate for schedule.

You can listen live to the show on the internet through the station's websites:



Seattle



Dallas/Ft.Worth



Twin Cities



San Francisco



Honolulu



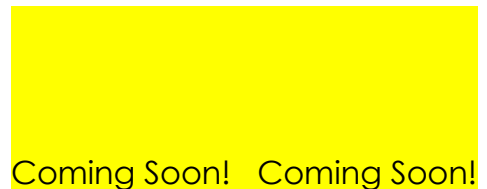
Atlanta



Tune-In App



BSN App



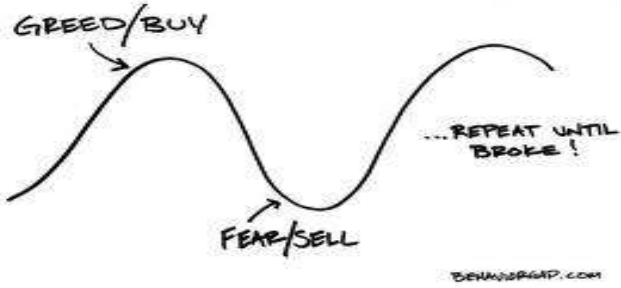
Houston

Miami

In addition to this we will also download the shows to the radio archives on my website <http://pwstreet.com> and send them to iTunes. There is no excuse to not keep up on your investments!

**DON'T BE THIS TYPE OF INVESTOR!!!!!!**





Bill Gunderson is also columnist for *The Street.com*, *MarketWatch.com*, *Townhall Finance*, and *SeekingAlpha.com*.



You can see my recent articles for the *TheStreet* by clicking [here](#)

To see my recent articles for *MarketWatch* click [here](#)

Watch for Bill Gunderson on:



Here are snippets on all of the stocks I have talked about on my radio show, and articles that I have written over the last few months. They are in alphabetical order.

<http://pwstreet.com/good-bad-stocks/>

To order my book, Best Stocks Now, click the link below:

<http://pwstreet.com/book/>

To set up and appointment with me, click the link below:

<http://pwstreet.com/contact-us/>



***Come visit me some time!***

**Subscriptions to this weekly newsletter are \$195 per year or \$60 per quarter. To subscribe call us at (855)611-BEST or visit our website at <http://pwstreet.com>. You can also mail a check to Gunderson Capital Mgt. 101 W.Broadway #1975 San Diego, CA 92101**

THIS REPORT PROVIDES GENERAL INFORMATION AND IS NOT AN OFFER TO BUY OR SELL ANY SECURITY. IT IS THE SOLE OPINION OF THE WRITER, BILL GUNDERSON. BILL GUNDERSON IS PRESIDENT OF GUNDERSON CAPITAL MANAGEMENT INC. LOCATED AT 101 W. Broadway #1975, San Diego, CALIFORNIA PHONE NO. (855)611-BEST. BILL GUNDERSON EDITS THE WEEKLY NEWSLETTER. INFORMATION IN THIS NEWSLETTER COMES FROM INDEPENDENT SOURCES BELIEVED TO BE RELIABLE, BUT ACCURACY IS NOT GUARANTEED. BILL GUNDERSON OR GUNDERSON CAPITAL MGT. INC. HAS NOT VERIFIED THE ACCURACY OF THE INFORMATION PUBLISHED BY THE INDEPENDENT SOURCES. SELECTIONS IN THIS NEWSLETTER ARE THE SOLE OPINIONS OF BILL GUNDERSON AND ARE SUBJECT TO RISKS AND UNCERTAINTIES BEYOND THE CONTROL OF BILL GUNDERSON AND GUNDERSON CAPITAL MGT. INC. SUCH RISKS AND UNCERTAINTIES INCLUDE NATIONAL, INTERNATIONAL, ECONOMIC CONDITIONS AND FLUCTUATIONS; ECONOMIC CONDITIONS OF SPECIFIC SECTORS AND GROUPS AND COMPANIES; MANAGEMENT CAPABILITIES OF COMPANIES SELECTED. SELECTIONS IN THIS NEWSLETTER MAY NOT YIELD PROFITABLE RESULTS AND MAY ACTUALLY RESULT IN A LOSS OF INVESTMENT CAPITAL. AS AN INVESTMENT ADVISOR, BILL GUNDERSON, OR CLIENTS OF GUNDERSON CAPITAL MGT. INC. MAY PURCHASE AND SELL SECURITIES IDENTIFIED EITHER IN THEIR OWN ACCOUNTS OR ACCOUNTS THAT THEY MANAGE. THEY MAY ALSO BUY OR SELL SECURITIES MENTIONED WITHOUT NOTICE TO NEWSLETTER SUBSCRIBERS. IF YOU HAVE ANY QUESTIONS, YOU CAN CONTACT BILL GUNDERSON AT (855)611-BEST