



UNIVERSITY OF  
WEST LONDON  
Connected.

# UNDERGRADUATE OPEN DAY

Saturday 5 October, 11am – 4pm  
St Mary's Road, Ealing W5 5RF

[uwl.ac.uk/  
open](http://uwl.ac.uk/open)

# 94%

.....  
of our graduates are  
**in employment**  
within six months of  
graduation\*

# Welcome to the University of West London

We are delighted that you are interested in studying at the University of West London and look forward to meeting you.

The open day will be a great opportunity for you to find out more about the course you are interested in and see why **94% of our graduates are in employment within six months of graduating\***.

In order to make the most of the talks and demonstrations, please have a look at the planner on pages 14 - 17 of this booklet.

Deciding which university to apply for can be tough, and we hope our open day will help you to make an informed decision. Please do not hesitate to ask any of the team if you have any questions.

**Professor Peter John**  
Vice-Chancellor  
University of West London



## Contents

Your arrival	4
Tours	6
Course Information Fair	8
One Stop Shop	10
Subject talks	12
Talks planner	14
General Advice Fair	18
How to find us	20
Site map	24
Future Campus	25
Registration fast-track	31

\* According to Employment Performance Indicators (EPI) figures published by HESA on 4 July 2013

# Your arrival

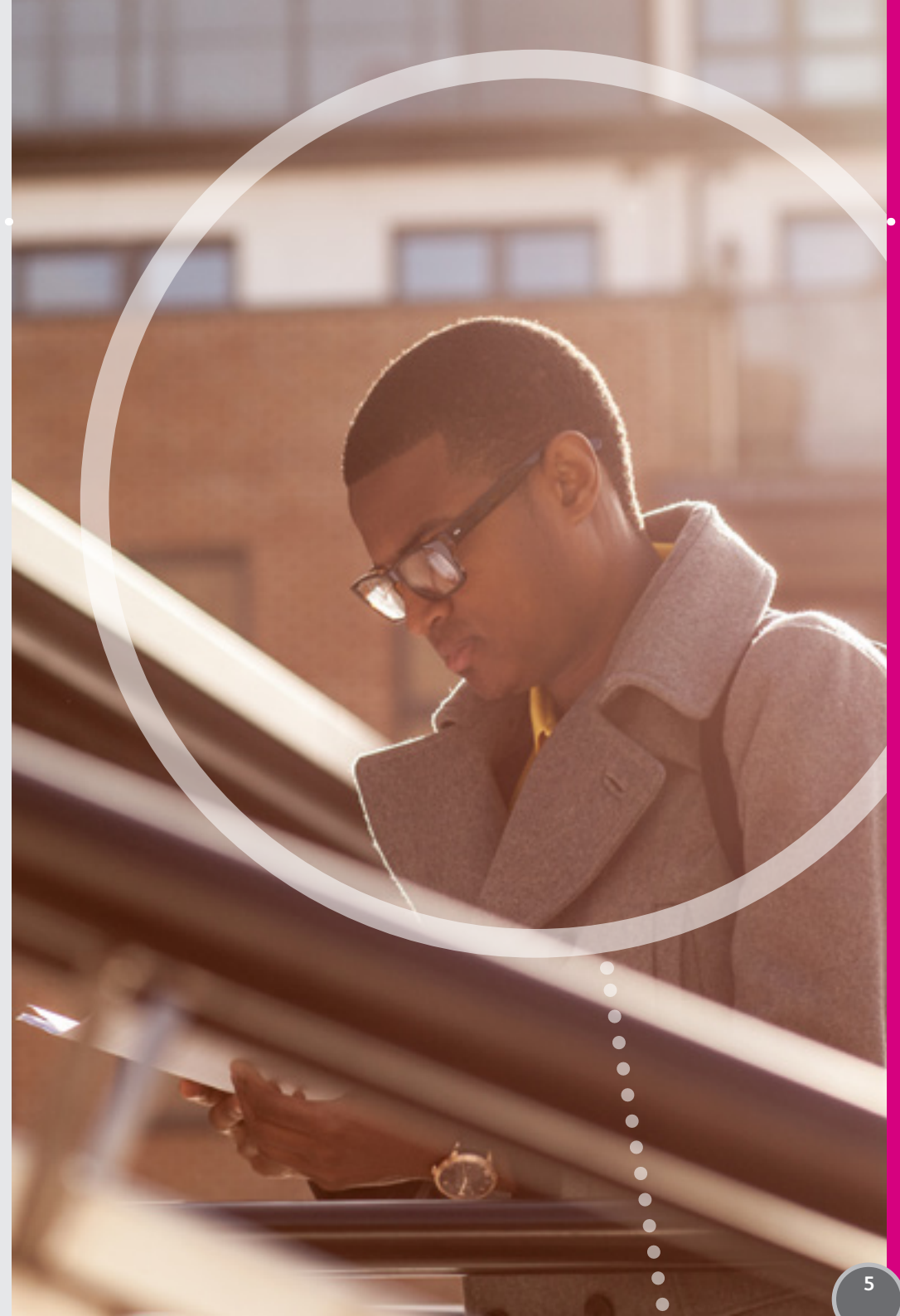
When you arrive, please go to the main reception where we will collect your completed fast-track registration form (which can be found on page 31 of this booklet) or where you will be able to register if you have not completed this beforehand.

## Refreshments

We will be welcoming you on arrival with refreshments in the Refectory. If you would like to purchase snacks throughout the day, there are a number of vending machines located throughout the site and a range of coffee shops, cafes and restaurants within a short walk.

## Helpdesk

If you need any advice or guidance throughout the day, our Helpdesk will be situated in the Refectory. The team there will be able to answer your questions, direct you around campus and advise you on how to make the most of your day.



# Tours

## General campus tours

**Times:** These leave approximately every 20 minutes. There is no need to reserve a space.

**Location:** The campus tour meeting point is situated in the Refectory opposite the Helpdesk.

We believe the best people to show you around our facilities are our current students. Who better to give you a real insight into what it's like to be a student at the University of West London?

### The tour will include:

- our main social spaces
- the One Stop Shop (Student Support Centre).



## Nursing and Midwifery Simulation Centre tours

**Times:** These run regularly throughout the day. Bookings can be made on a first come first served basis at the Helpdesk in the Refectory on the day.

**Location:** Please check-in with our Tour Operator at the Helpdesk located in the refectory five minutes before your scheduled tour time.

Our Simulation Centre boasts state-of-the-art facilities to enable a full range of hands-on training. The Centre is able to replicate theatre, critical care, A&E (Accident and Emergency), midwifery, ward-based and community environments, supporting the educational needs of students from a range of disciplines.

**Due to high demand, it may only be possible for one guest to accompany you on this tour.**



# Tours

## Accommodation tours

**Times:** These run regularly throughout the day. Bookings can be made on a first come first served basis at the Helpdesk in the Refectory on the day.

**Location:** Please check-in with our Tour Operator at the Helpdesk located in the Refectory five minutes before your scheduled tour time.

Paragon is our award-winning student accommodation which has 810 ensuite single study bedrooms, each with communal kitchen/dining areas, fitted to the highest standards including WiFi. It is located on our Brentford site, eight minutes by free shuttle bus from our Ealing site.

The tour takes around one hour to complete, and if you don't have time to join a tour on the day, staff from the accommodation service will be available to answer any queries at the One Stop Shop on the ground floor.

 For more information about our accommodation visit: [uwl.ac.uk/accommodation](http://uwl.ac.uk/accommodation)



# Course Information Fair

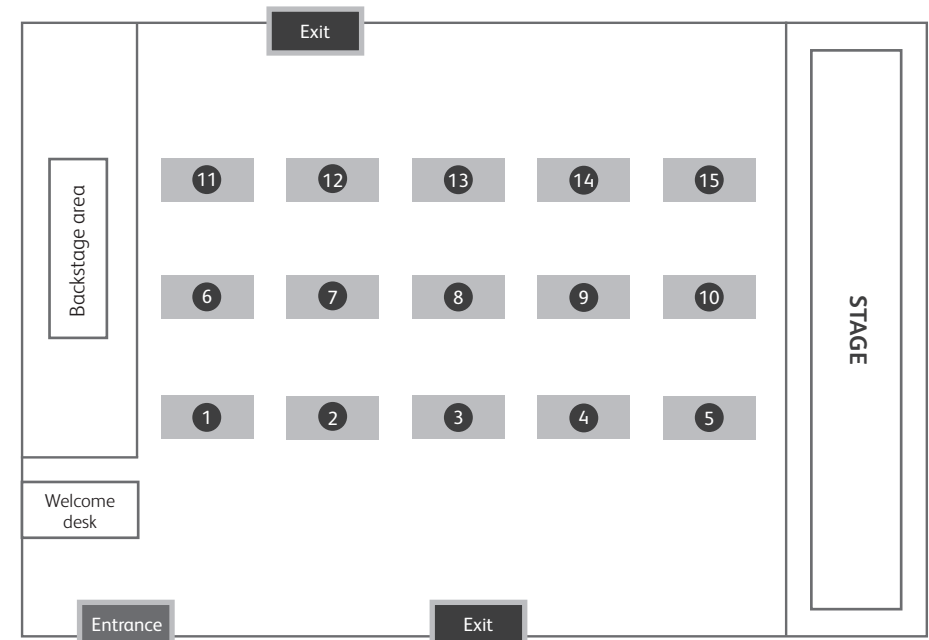
## Talk to our academics one-to-one

**Times:** 11am – 4pm

**Location:** Lawrence Hall

We would recommend you visit the Course Information Fair at some point during your visit. Representatives will be available from each of our Schools:

- College of Nursing, Midwifery and Healthcare
- Ealing Law School
- Ealing School of Art, Design and Media
- London College of Music
- London School of Hospitality and Tourism
- School of Computing and Technology
- School of Psychology, Social Work and Human Sciences
- The Business School.



- 1 Law and Criminology
- 2 Film Production, Media, Broadcasting, Broadcast Journalism, Advertising and PR
- 3 Fashion, Photography, Graphics, Motion Graphics and Digital Visual Effects
- 4 Tourism, Airline and Airport Management
- 5 Hospitality, Events Management, Culinary Arts and Professional Cookery
- 6 Music Technology, Live Sound and Music Management
- 7 Music Performance, Composition, Musical Theatre, Theatre Production and Acting for Stage
- 8 Computing, Architectural Technology, Civil Engineering and Applied Sound Engineering
- 9 Midwifery and Operating Department Practice
- 10 Adult, Child, Mental Health and Learning Disabilities Nursing
- 11 Business, Accounting and Finance
- 12 Psychology
- 13 Social Work and Forensic Science
- 14 Home and EU Admissions
- 15 International Team

# One Stop Shop

**Times:** 11am – 4pm

**Location:** Ground Floor

The One Stop Shop helps with all non-academic student enquiries. They can help you with any questions you may have on a one-to-one basis, relating to the following:

- accommodation
- disability support
- funding advice
- health and well-being - including health, counselling and chaplaincy
- general student advice.

## Accommodation

At the One Stop Shop, you will be able to discuss your accommodation options and how to apply for a place in our Student Halls of Residence.

They can also advise you on:

- letting agents and private rented accommodation
- student residences.

# One Stop Shop

## Disability support

Come and speak to our Disability Advisors, who work with students with a wide range of disabilities, including but by no means restricted to:

- specific learning difficulties (such as dyslexia, dyspraxia, ADHD)
- mental health difficulties (such as depression, bi-polar disorder)
- long term medical conditions (such as HIV, cancer, multiple sclerosis)
- unseen disabilities (such as diabetes, asthma, epilepsy)
- sensory impairments (such as visual impairment, hearing impairment)
- mobility or physical impairments (such as paralysis, arthritis).

## Funding advice

Ask about money matters on a one-to-one basis and take the opportunity to discuss student loans, scholarships and bursaries.

## Health and well-being

We look after our students through close links with local doctors and GP practices.

We offer a counselling service in case you feel your well-being is being affected or compromised and would like to talk in confidence about any issues.

Our chaplaincy represents faith communities and gives personal and spiritual support for students of any religious background or none.



**If you are considering studying part-time, please visit the One Stop Shop for more information on funding.**



# Subject talks

There will be a number of talks throughout the day to help you find out more about our courses and facilities. The planner on pages 14 - 17 will help you schedule your day and the information over the next few pages will help you work out which of our talks will be most beneficial to you.

**You do not need to book for any of the talks.**

## Introduction to the University of West London

**Times:** 11am and 1pm  
**Location:** Dr William Barry Theatre, First Floor, Ealing site

We will welcome you to the University and showcase the exciting opportunities the University has to offer.

## Money Talk

**Times:** 12noon and 1.30pm  
**Location:** TC228  
Second Floor, Ealing site

Come along to our Money Talk, where we will be presenting a guide to student finance. The talk will also cover the UK National Scholarship Programme and what financial help may be available to you.

**If you cannot attend this talk you can visit our award-winning Finance Team in the main reception who will be able to answer any questions you might have.**

# Subject talks

## Parents Talk

**Times:** 12.30pm  
**Location:** Dr William Barry Theatre, First Floor, Ealing site

This talk will give parents and guardians lots of hints and tips on the support they can provide throughout the university application process.

## UCAS Application and Personal Statement Workshop

**Times:** 12noon and 2.30pm  
**Location:** Dr William Barry Theatre, First Floor, Ealing site

In today's competitive climate, a high quality personal statement can be vital in securing your place at your first-choice university.

This workshop will certainly help to get you started. There will be plenty of 'top tips', helpful hints and work sheets to take away with you at the end of the session.



# Talks planner

OPEN DAY SCHEDULE	11am	11.30am	12noon	12.30pm	1pm	1.30pm	2pm	2.30pm	3pm
<b>University-wide talks</b>									
Introduction to UWL	DWBT***				DWBT***				
Money Talk: to include NSP and scholarships information			TC228			TC228			
Parents Talk				DWBT***					
UCAS Application and Personal Statement Workshop			DWBT***					DWBT***	
<b>London College of Music</b>									
Welcome Talk		TC132				TC132			
Music Management			TC134						
Music Technology and Live Sound Production			TC132*				TC132*		
Musical Theatre and Acting for Stage			Vestry Hall**			Vestry Hall**			
Music Performance and Composition				TC132*				TC132*	
Theatre Production					TC134				
<b>London School of Hospitality and Tourism</b>									
Welcome Talk		TC140							
Culinary Arts and Professional Cookery			H236*				H236*		
Hospitality and Events Management			TC140*				TC140*		
Tourism Management/Airline and Airport Management			H310*				H310*		
<b>College of Nursing, Midwifery and Healthcare</b>									
Welcome Talk		TC128				TC128			
Midwifery			TC128				TC128		
Adult Nursing				TC128				TC128	
Child Nursing				TC130		TC130			
Mental Health and Learning Disabilities Nursing			TC130				TC130		
Operating Department Practice					TC130				
<b>Ealing School of Art, Design and Media</b>									
Welcome Talk		DWBT***							
Advertising				TC126				TC126	
Broadcasting/Broadcast Journalism			TC126			TC126			
Fashion and Textiles			TC30*				TC30*		
Film			TC120	Showreel			TC120	Showreel	
Graphics/Motion Graphics					TC110				
Media					TC46				
Photography			TC118*				TC118*		
Public Relations					TC126		TC126		
Visual Effects					TC118*				



OPEN DAY SCHEDULE	11am	11.30pm	12noon	12.30pm	1pm	1.30pm	2pm	2.30pm	3pm
<b>The Business School</b>									
Welcome Talk		TC46							
Accounting and Finance				TC46				TC46	
Business			TC46				TC46		
<b>School of Computing and Technology</b>									
Welcome Talk	H140								
Applied Sound Engineering		TC144B							
Applied Sound Engineering Demonstration Session			TC144B + H214						
Architectural Technology, Construction Management and Civil Engineering		H118							
Architectural Technology and Construction Management Demonstration Session			H118						
Civil Engineering Demonstration Session			H218						
Computing		TC344							
Computing Demonstration Session			TC344						
<b>Ealing Law School</b>									
Criminology							DWBT***		
Law						DWBT***			
<b>School of Psychology, Social Work and Human Sciences</b>									
Forensic Science			H216: Detection of minute blood stains			H216: Detection of minute blood stains			
Psychology (includes workshop)		TC138			TC138			TC138	
Social Work (includes workshop)			TC248				TC248		

\*These talks include tours of our specialist facilities unique to the subject area  
 \*\* Please head to TC20, Ground Floor of the Teaching Centre and one of our Student Ambassadors will escort you to Vestry Hall at the given time  
 \*\*\* Dr William Barry Theatre, Ealing site  
 \*\*\*\* Tours last one hour

# General Advice Fair

**Times:** 11am – 4pm  
**Location:** The Refectory

## Learning support

The Institute of Teaching, Innovation and Learning (INSTIL) run numerous workshops to help students develop their academic skills.

There are regular sessions that cover topics like critical thinking, avoiding plagiarism, exam and revision strategies.

## Careers and Employment Service and Volunteering

If you would like to talk to someone about careers, or if you are thinking of working part-time during your studies, then the Careers and Employment Service will be able to help.

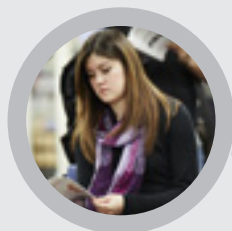
We can help you to make choices that are right for you whether they involve employment or further study.

You can also speak to us to find out what volunteering is all about. From One Day Challenges to Volunteer Placements, there is something for everyone.

## Library

Students spend a lot of their time in the Library, so why not speak to one of our dedicated Library staff, who can help you make the most of the resources available?

As well as our extensive stock of specialist books and journals, the Library provides fully-networked, open access work stations, scanners, colour printers, DVDs and audio playback.



# General Advice Fair

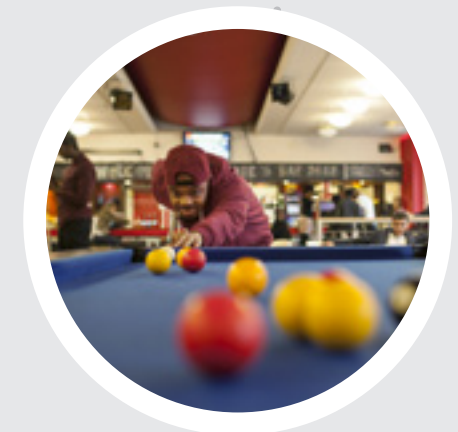
## Students' Union

The Students' Union will be open to all from 11am to 4pm: make sure to visit our brand new bar, gym, café and office!

Come and experience what student life is like at the University of West London. As a student, you automatically become a member of the Students' Union. Our role is to make sure that you have the best time, socially and academically, throughout your studies. We offer a bar, gym and café on campus, exclusively for the use of our students, and support a range of different clubs and societies, which you can join to have fun and meet new friends. The SU also supports course representatives to ensure that your voice is made loud and clear and to give you a say in your academic experience. There are plenty of opportunities for you to get involved in the Students' Union. When you arrive, make sure to come and meet us and be part of something great!


This year's elected **Students' Union President, Jodie Vickery**, will be available all day for you to ask any questions you may have about studying at the University of West London.

 For all of the latest news and updates, please follow [@UWL\\_SU](https://twitter.com/UWL_SU) on Twitter.



# How to find us

The University of West London has excellent transport links. The Ealing site is served by fast rail-links and there are also excellent local bus services.

 Visit [www.tfl.gov.uk](http://www.tfl.gov.uk) to plan your journey.

## By bus

There are several bus routes that run close to the Ealing site.

## These are:

65, E2, E8, 207, 427, 607, E3 and E9.

## By underground

The nearest underground stations are **South Ealing (5 mins walk)**, which is on the Heathrow branch of the Piccadilly Line and **Ealing Broadway (8 - 10 mins walk)**, which is on the Central and District Lines.

## By train

There is one train station within walking distance of our Ealing site, which is **Ealing Broadway**. There is a regular rail service to and from London Paddington (approx 10 mins), Slough (20-30 mins) and Reading (40 mins).

## By road

### Sat Nav postcode:

W5 5RF, St Mary's Road

The Ealing site lies on the B455 between the A4 and the A4020 (Uxbridge Road). The M4 motorway is a few minutes' drive away from Ealing (Junction 2), and the A40, M40 and M25 are all easily accessible.

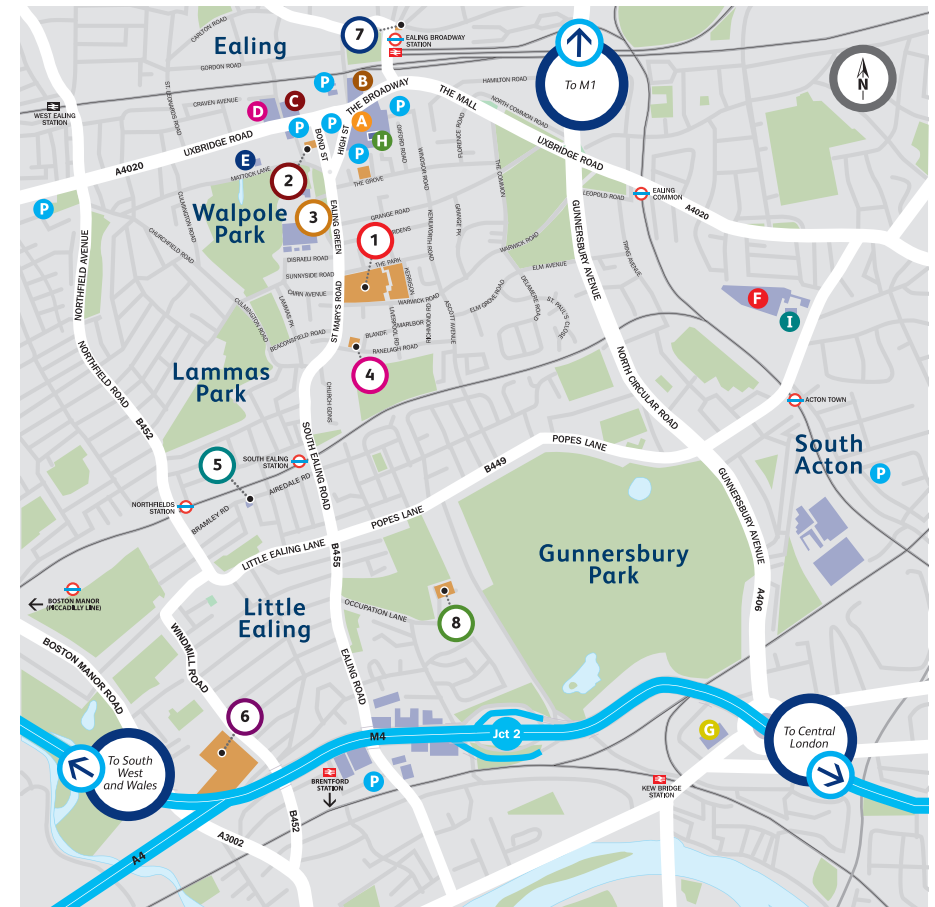
## Parking

We recommend using public transport to travel to us, as parking in Ealing is limited and there is no parking available on site.

There is, however, parking in Ealing Broadway Shopping Centre, which is reasonably priced, and a 5-10 minute walk away.

### Sat Nav postcode:

W5 3HL



### University Buildings

- 1** .....  
**Ealing Site**
- Academic Office
  - Administration
  - Bookshop
  - Ealing Law School
  - Ealing School of Art, Design and Media
  - London College of Music
  - London School of Hospitality and Tourism
  - Pillars Restaurant
  - School of Computing and Technology
  - Student Services
  - Students' Union
  - Teaching Centre
  - University Accommodation Service
- 2** .....  
**Walpole House**
- Administration
- 3** .....  
**Ealing Studios**
- Ealing School of Art, Design and Media
  - London College of Music
- 4** .....  
**Vestry Hall**
- London College of Music
- 5** .....  
**Bramley Road Surgery**

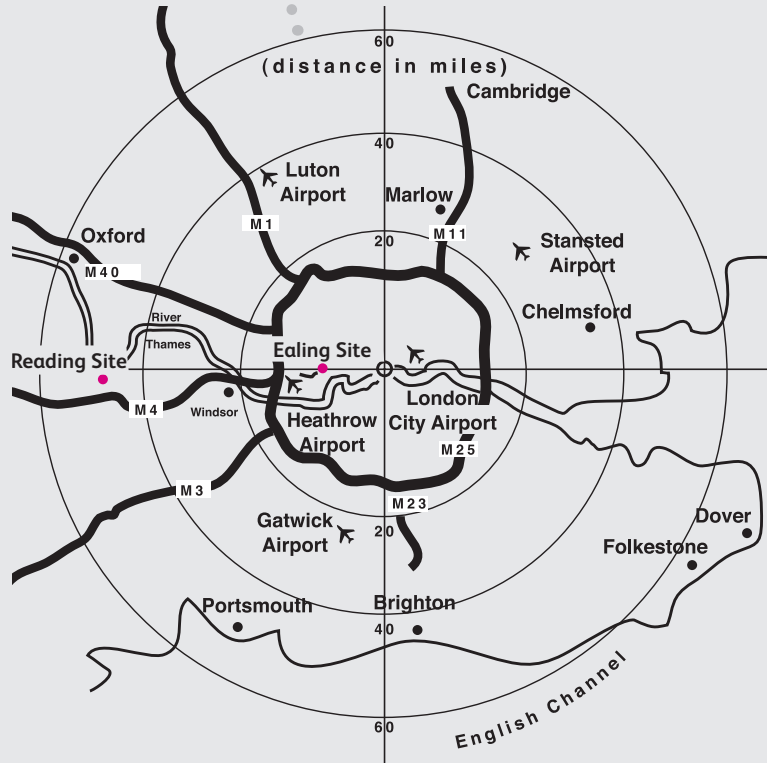
- 6** .....  
**Brentford Site**
- College of Nursing, Midwifery and Healthcare
  - Library
  - Paragon Residential Accommodation
  - School of Psychology, Social Work and Human Sciences
  - Nursing Simulation Centre
  - The Business School
- 7** .....  
**Villiers House Library**
- 8** .....  
**Student Village Housing**

### Additional Information

- A** Broadway Shopping Centre
- B** Arcadia Shopping Centre
- C** Ealing Town Hall
- D** Ealing Civic Centre
- E** Questors Theatre
- F** Acton Hospital
- G** Leisure Centre
- H** Library
- I** Sports Centre
- P** Parking



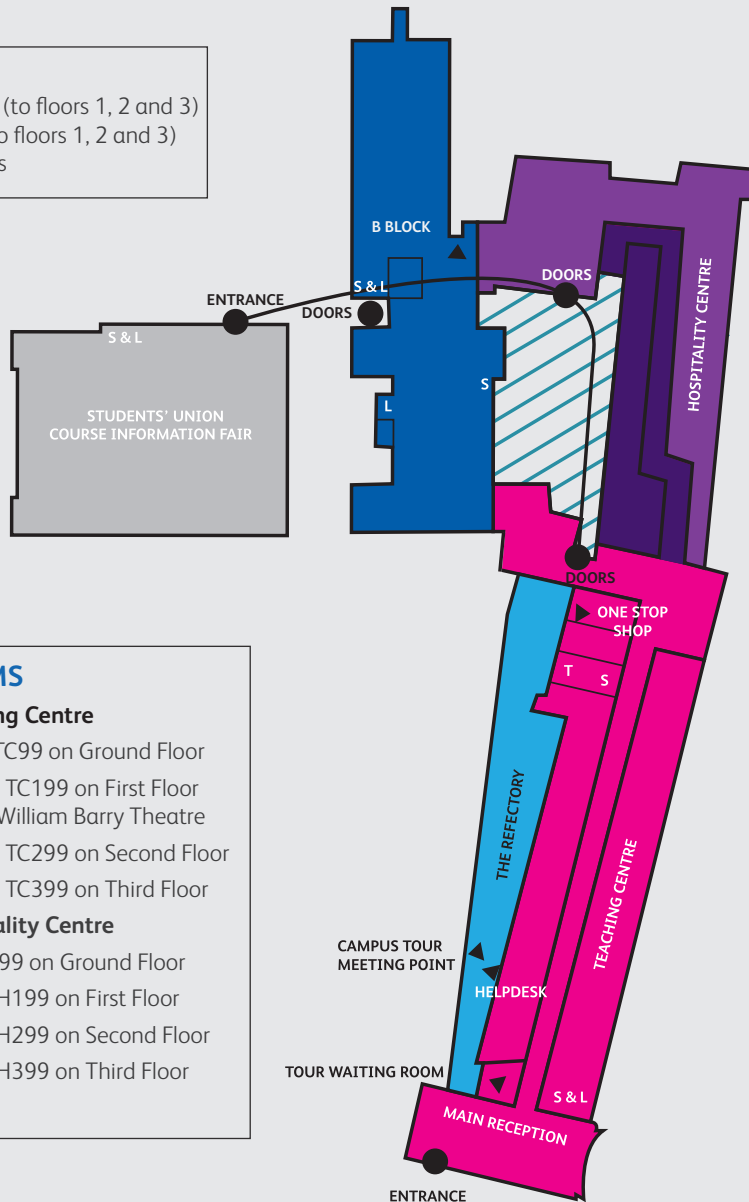
# How to find us



# Site map

## KEY

- S Stairs (to floors 1, 2 and 3)
- L Lift (to floors 1, 2 and 3)
- T Toilets



## ROOMS

### Teaching Centre

- TC10 - TC99 on Ground Floor
- TC100 - TC199 on First Floor and Dr William Barry Theatre
- TC200 - TC299 on Second Floor
- TC300 - TC399 on Third Floor

### Hospitality Centre

- H10 - H99 on Ground Floor
- H100 - H199 on First Floor
- H200 - H299 on Second Floor
- H300 - H399 on Third Floor

# FUTURE CAMPUS

## #FutureCampus

**Future Campus** is an exciting project to modernise the University of West London's Ealing site which will be rolling out in phases over the next two academic years.

The project is part of our long term strategy to continually improve the learning experience and social spaces for our students and to maintain our position as the number one modern University\* in the capital.

This is an exciting time to join the University of West London. A brand new Students' Union will open in September 2013 with a new bar and lounge, gym and modern café. Furthermore, by September 2014, the University will boast a new library, brand new refectory, updated bookshop and a social space in the heart of the campus.

These changes will take place predominately in the summer breaks to minimise the impact on day-to-day life at the site.

If you have any questions, please visit [www.uwl.ac.uk/futurecampus](http://www.uwl.ac.uk/futurecampus) or contact the Future Campus team by emailing [futurecampus@uwl.ac.uk](mailto:futurecampus@uwl.ac.uk)

Alternatively, visit our Facebook group: **'UWL Future Campus News'**

\*The Guardian University Guide 2013



Follow @Uniwestlondon #FutureCampus



Visit our Facebook group 'UWL Future Campus News'

futurecampus@uwl.ac.uk





**Join us on Facebook:**

[facebook.com/UniversityofWestLondon](https://facebook.com/UniversityofWestLondon)



**Follow us on Twitter:**

[twitter.com/UniWestLondon](https://twitter.com/UniWestLondon) #TeamUWL #UWLopenday



**Subscribe to our YouTube channel:**

[youtube.com/uniofwestlondon](https://youtube.com/uniofwestlondon)



**Connect with us on LinkedIn:**

[uk.linkedin.com/company/university-of-west-london](https://uk.linkedin.com/company/university-of-west-london)

**#UWL**







# Registration Fast-track

To fast-track your registration, please fill in the attached form and hand in to one of the team on the day.

Name

Address

Mobile number

email

How many guests have accompanied you?

Subject that you are interested in





UNIVERSITY OF  
**WEST LONDON**  
Connected.

**94%**

.....  
of our graduates are  
**in employment**  
within six months of  
graduation\*

\* According to Employment Performance Indicators (EPI) figures published by HESA on 4 July 2013.  
Graduates who have studied an undergraduate degree programme.