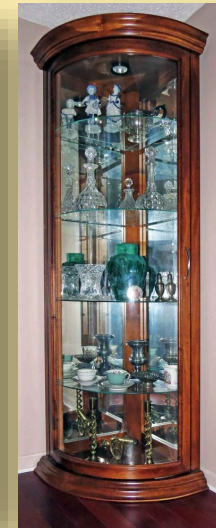


Estate Sale Pros

Living Estate Sale

RANCHLANDS

ONLY
2
DAYS



Unit 39—700 Ranch Estates Pl. NW
Calgary, AB T3G 1M3

LIVING ESTATE SALE

FRIDAY

June 20 NOON—6:00PM

SATURDAY

June 21 10:00AM—3:00PM

SPECIAL INVITATION
Friday June 20
10:00AM—NOON

Contents for Sale by OWNER / EXECUTOR

Welcome

This client is moving out of the country so....there must not be anything left!

An assortment of items ready to go from her home to yours.

A great opportunity to “car shop”. The “SMART” car has only had about 8300 km per year added to the speedometer (or about 700 per month) and the Dodge NITRO...only about 400k per week. **PRETTY LOW MILEAGE** on both cars.

Artworks, furniture, carpets and cars. A pretty well rounded sale!

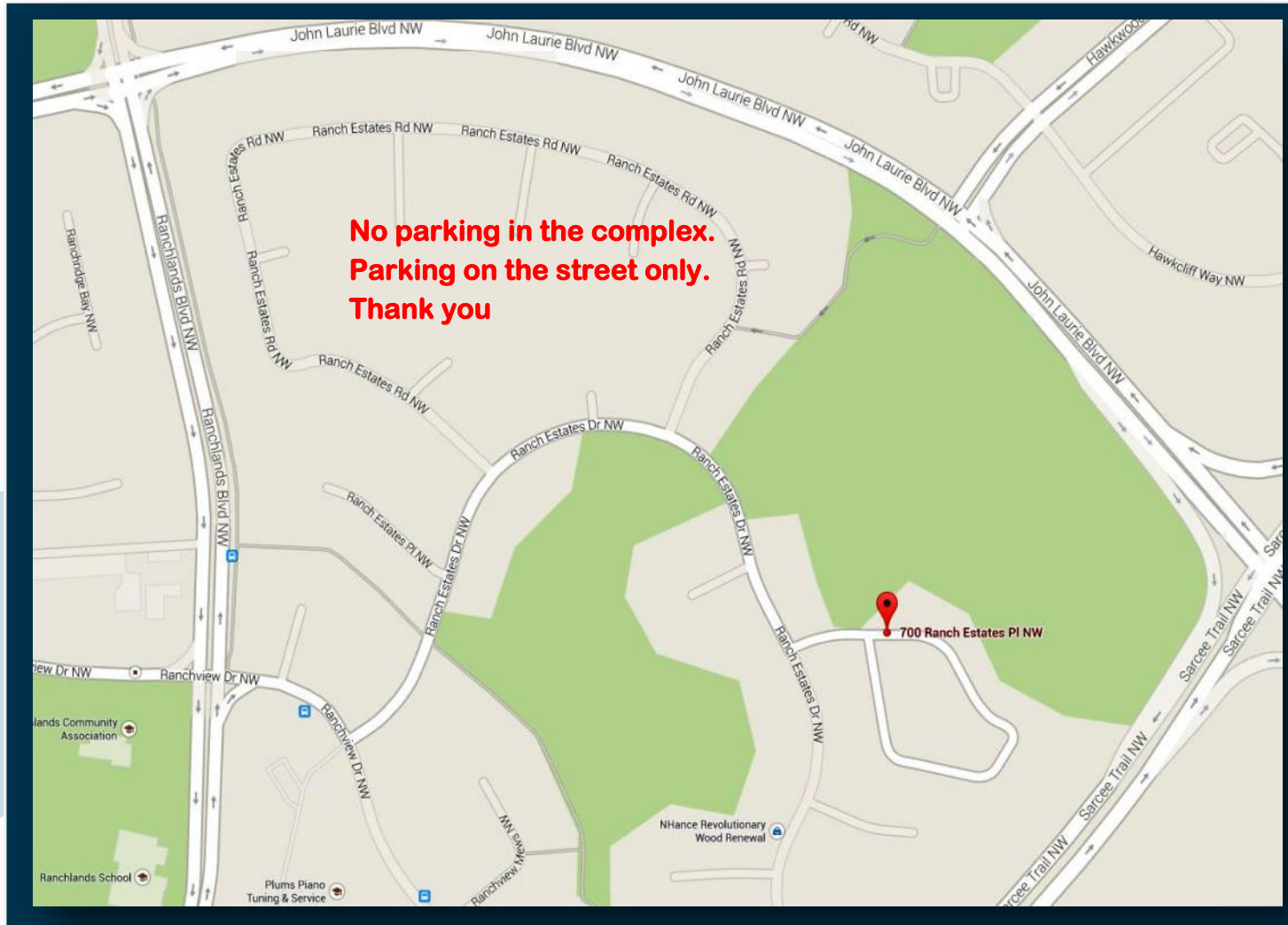
See you in Ranchlands!

Estate Sale Pros

Living Estate Sale

Ranchlands

Everything for Sale Except the Memories!



Everything
**PRICE TAGGED TO
SELL**

CASH & CARRY

Bring help to
MOVE furniture

**ENTIRE HOUSEHOLD
CONTENTS FOR
SALE**

*Information herein
deemed reliable but not
guaranteed*

ENJOY THE SALE!

Unit 39—700 Ranch Estates Place NW Calgary, T3G1M3



2009 Smart Fortwo

41,437 km

Yellow and black exterior. Automatic/standard. Air conditioning. Tac Dial. Clock. Bike Rack. Headlight eye lashes. iPod jack.

Estate Sale Pros

Living Estate Sale



2007 Dodge Nitro

94,707 km

Electric blue, grey interior.
Full tow package with brake controller.
Air conditioning. Heated leather seats.
iPOD jack. 130 volt plug. Slide out trunk.
Moon/Sun roof. Upgraded speakers. New battery. Fairly new tires. Running boards. Wind deflectors. Bluetooth.





Estate Sale Pros

Living Estate Sale





Estate Sale Pros

Living Estate Sale





Estate Sale Pros

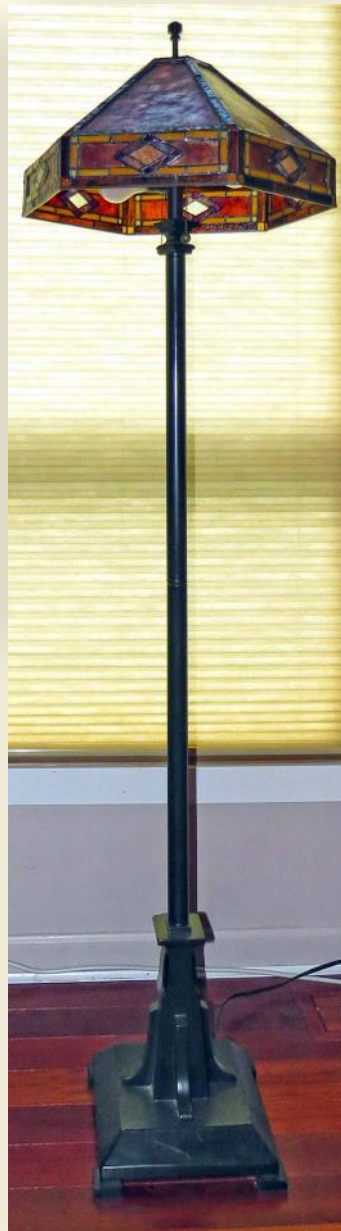
Living Estate Sale





Estate Sale Pros

Living Estate Sale





Estate Sale Pros

Living Estate Sale





DETAILS

MODERN FURNITURE

- Wonderful **corner DISPLAY CABINET**, rounded glass door, 4 interior shelves (76 1/2" tall)...Perfect for displaying precious items.
- **SQUARE DINING TABLE** (36" square), 1 - 18" leaf and **6 HIGH BACK CHAIRS** (minor chips on legs, etc).
- **Black leather three seater SOFA**, triple back and double arm cushion (93" L X 39" D).
- **"Chair and a half"**, soft red color with loose back and **two separate** cushions to match chair (measures 53" X 41"), **built for cuddling**.
- **Queen size SLEIGH BED** (head and footboard) with **top quality TEMPUR-PEDIC MATTRESS** (mattress alone worth \$3000.00).
- **Very unique "DOLL HOUSE" shaped liquor cabinet, converted to computer desk by client.** Front wall (doorway) opens to reveal inside. Pull out writing surface with English leather inset. Double drawer, heavy duty brass fittings. Measures (36" W X 28" D X 33" H)
- Set of 3 **NESTING TABLES**, inset wood (as is).
- (2) **IKEA high back CHAIRS with stools**, leather back and seat.
- **Bar Stool "Charles Ghost" by Kartell with Starck (designed by Phillip Starck).**
- (2) **TRI-LIGHT FLOOR LAMPS** with "faux" stained glass shades (plastic).
- Modern **NURSING/ROCKER**.
- **5 drawer pink DRESSER**...fantastic for a little girl's room.
- **IKEA ISLAND** with attached 3 stainless steel drawers and **2 high back BAR STOOLS** (69" L X 35" D X " 35 1/2" H). This whole unit could even be used in a sewing room.
- Handy Cupboard, door with 4 interior shelves (19 1/2" X 13" D X 48" H).
- Wonderful **COFFEE TABLE**, 2 fold out leaves, lower pull out baskets.
- Large **upholstered FOOTSTOOL** (as is).

RUGS

- **Wool AREA RUG**, Green/Blue (measures 75" X 109").
- **Wool rug**, red with centre medallions (measures 41" X 71")

- **Wool rug**, red with diamond and rectangular pattern (48" X 90").
Area RUG, made in Pakistan (3' 9" X 5' 9").

ANTIQUE FURNITURE & COLLECTABLES

- **Wonderful DESK with drop front "leather" topped writing surface**, 16 interior compartments, 2 small door compartments, 2 drawer compartments, 3 lower drawers, made by National Mt. Airy, purchased at Weismore Furniture (56" L X 26" X 47"), **very good quality!**
- **Antique "Duncan Phyfe" type TABLE**, pie crust edge, mahogany wood, splayed leg base. Top and double leaves "fold down", as is.
- **Antique CHEST**, three drawer with pull out upper shelf, "birds eye" maple centre, veneer over oakwood, original patina on brass door drawer pulls with "OGEE" feet. Drawer bottoms bevelled and hand planed.
- Antique **liquor decanter**, approx. 8" tall, as is.
- Blue and white figurine, **"Boy with Accordion"**, back stamp crossed hammers, **Metzler and Ortloff (C1941)**, similar to Lladro.
- (2) **antique brass open "barley twist" CANDLE STANDS** (11 3/4" H).
- Tall green **Malecite VASE**, raised figures, approx. 14" H.
- **Fish service, antler horn handles** with engraved blades on knife and fork.
- **LIBCASCA BRASS WEIGH SCALE with 6 brass weights** (1 lb., 8 oz., 4 oz., 2 oz., 1 oz., 1/2 oz.), **excellent condition.**
- Antique **brass & porcelain handled tripod base trivet**, adjusts to clip onto fireplace.
- Pair of **STERLING SILVER salt & pepper stands.**
- **AUTO HARP** with velvet lined case (very nice decorative piece).
- **Pan FLUTE** in case.
- **BESWICK FOX & DOG**, bone china ornaments.
- Framed print "European Canal Scene" (19" X 23").
- **Antique 3 drawer CHEST** with pull out slider (24" X 18" X 30 1/2")
- Pink **ALABASTER TABLE LAMP.**
- **ROYAL DOULTON "PROVENCAL" pattern cereal bowls** (4).
- **Royal Albert "Forget Me Not" creamer.**
- **Royal Winton compote.**
- **Small Port Merion bowl.**
- **ROYAL DOULTON "Cotswold" pattern** (7 pieces)
- Wall **BAROMETER.**

Estate Sale Pros

Living Estate Sale

- Hand carved Native canoe on stand (Haida or Salish).
 - (4) different **Asian prints**.
- Some **costume jewellery**.

ELECTRONICS

- **SAMSUNG 40" TV**, model LN40D550K1F, with two tiered STAND, 2011
 - **BOSE STEREO SYSTEM, SURROUND SOUND and (2) SPEAKERS**, model AV3-2-1, serial no. 039540F72010942AZ (Excellent sound!).
 - **DOLBY DCX3400-M, PVR.**
 - **Sony Dream Machine Radio/Alarm Clock.**
 - **Toshiba 20" TV.**
- Toshiba **DVD player**.

HOUSEHOLD ITEMS

- 3 drawer **IKEA CHEST**.
 - (2) warming **TOWEL RACKS**.
 - **IKEA Queen Size COT**.
 - **Single fold up COT**.
 - **King size DUVET COVERS** (2) with matching sheets.
 - **Queen and double size MEMORY FOAM** (like new).
 - Small wooden **BLANKET CHEST** with lift up seat.
 - **Down filled throw pillows**.
- Mattress protectors.

KITCHEN ITEMS

- (2) Braun Mixers.
- **Magic Bullet** with approx. 17 accessories.
- PC electric hand mixer.
- Proctor Silex **electric mixer**.
- (2) Proctor Silex **crook pots** (1 large, 1 small).

- **CUISINART GRIDDLER.**
- Hamilton Beach **electric CAN OPENER.**
- Glass & tin **BAKING DISHES.**
- Pots & pans.
- Strainers.
- Lagostina **frying pans (2).**
- Turkey platter.
- Large **roasting pan.**
- **DANBY Microwave.**
- Hamilton Beach **ICE CREAM MAKER.**

GARDEN ITEMS

- Selection of pots, garden hoses, rake, hand tools.
- Patio **Garden Swing.**
- Watering can.
- Resin bird bath.
- "Log" water fountain.

MISCELLANEOUS

- **ELNA SEWING MACHINE**, model 2004.
- **GBC Shredder**, model SC32.
- Adjustable **OFFICE CHAIR**, seat lifts up.
- **Canon MP600 Scanner**, printer, copies.
- Small wooden **SHOE RACK.**
- **Apartment size CHEST FREEZER.**
- 3 drawer arborite **CHEST.**
- 6 shelf arborite **BOOKCASE.**
- Lots of CD's and cassettes
- Selection of **LP RECORDS** (including some Bluegrass).
- Small wooden stand, lower shelf.

Estate Sale Pros

L i v i n g E s t a t e S a l e

- Selection of **Ladies Clothing** (Size L, XL), purses and scarves.
- Ladies Size 10 shoes and boots.
- 2 wheeled dolly.
- Selection of Rubbermaid storage containers.
- Fold up lawn chairs.
- Card table.
- Set of 4 fold up chairs.
- Car **bike carrier**.
- **ENCORE 1500 TREADMILL.**
- Mah Jong set.
- **Sunstream RAM-X KAYAK.**

PLUS MUCH, MUCH, MORE.