

LUNDSTRÖM
COLLECTION
SPRING SUMMER 2012

AUGUST 17TH
CANADA/USA



milan

Delivery: January 1 - 30th, 2012

- 4 Sharkskin Suiting
- 4 Vine Jacquard
- 4 Wicker Suiting
- 5 Eyelet Lace
- 5 Monotone Paisley
- 5 Rosette Swirl Dot Chiffon
- 5 Swirl Dot Chiffon
- 6 Abstract Floral Silk Cotton
- 6 Manhattan Jersey
- 6 Lux Matte Jersey
- 7 Sorona Shield
- 7 Fine Stretch Cotton Shirting
- 7 Ponte Stretch



miami

Delivery: February 1 - 28th, 2012

- 9 Peony Floral Printed Cotton
- 9 Stretch Cotton Sateen
- 9 Peony Printed Jersey
- 9 Summer Jersey
- 10 Garden Floral Chiffon
- 10 Vintage Lace
- 10 Eyelet Lace
- 10 Fine Stretch Cotton Shirting
- 11 Lux Matte Jersey
- 11 Faux Animal Print Jersey



marrakesh

Delivery: March 1 - 30th, 2012

TBA



milan

Delivery: January 1 - 30th, 2012

SHARKSKIN SUITING 62% COTTON 27% LINEN 11% VISCOSE



Petrol



C56020
SHRUNKEN TRENCH
????
Size: 2 - 16



C46070
DOUBLE BREASTED FITTED JACKET
01 181 255 385
Size: 2 - 16



C01020
CLASSIC FLAT FRONT TROUSER
01 134 255 285
Size: 2 - 16



C01030
FLAT FRONT ANKLE PANT
01 119 255 255
Size: 2 - 16



C10010
CLASSIC PENCIL SKIRT
01 96 255 205
Size: 2 - 16

SHARKSKIN SUITING (cont'd) 62% COTTON 27% LINEN 11% VISCOSE



Petrol



C22040
SLEEVELESS LINER
01 78 255 165
Size: 2 - 16



C34140
SLEEVELESS DRESS WITH COLLAR DETAIL
01 167 255 355
Size: 2 - 16

VINE JACQUARD 52% COTTON 48% POLYESTER



Black/Ivory



C46030
SHORT BOAT NECK JACKET - LINED
01 162 255 345
Size: 2 - 16



C10020
A-LINE SKIRT
01 119 255 255
Size: 2 - 16



C34010
SCOOP NECK SUNBURST PLEATED DRESS
01 162 255 345
Size: 2 - 16

WICKER SUITING 44% VISCOSE 32% COTTON 24% POLYAMIDE



Black



C11030
PENCIL SKIRT
01 129 255 275
Size: 2 - 16



C46080
SHORT JEWEL NECK JACKET
01 167 255 355
Size: 2 - 16



C34150
SPLIT LEVEL HEM DRESS
01 181 255 385
Size: 2 - 16

EYELET LACE 77% RAYON 23% NYLON



C34130
WAIST DRAWSTRING SLEEVELESS DRESS
????
Size: 2 - 16

MONOTONE PAISLEY 100% POLYESTER



C20010
2 TONE SHIRT
01 125 255 265
Size: 2 - 16



C20080
2 TONE DRAWSTRING BLOUSE
01 109 255 235
Size: 2 - 16



C34020
HIP DRAPE SLEEVELESS DRESS
01 186 255 395
Size: 2 - 16



C22010
REVERSIBLE ELONGATED TANK TOP
01 73 255 155
Size: 2 - 16

ROSETTE SWIRL DOT CHIFFON 100% POLYESTER



C22050
SLEEVELESS TOP
01 68 255 145
Size: 2 - 16



C11040
A LINE BANDED SKIRT
01 101 255 215
Size: 2 - 16

SWIRL DOT CHIFFON 100% POLYESTER



C34030
CAP SLEEVE DRAPE DRESS
01 177 255 375
Size: 2 - 16



C05010
SOFT SHORT
01 96 255 205
Size: 2 - 16



ABSTRACT FLORAL SILK COTTON 70% COTTON 30% SILK



C20040
LONG SLEEVE SHIRT
01 115 255 245
Size: 2 - 16



C23120
CAP SLEEVE BLOUSE WITH CONTRAST
01 78 255 165
Size: 2 - 16

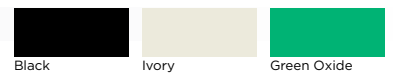


C11020
FULL SKIRT WITH YOKE
01 134 255 285
Size: 2 - 16



C33010
BOAT NECK FITTED DRESS
01 186 255 395
Size: 2 - 16

MANHATTAN JERSEY 94% VISCOSE 6% SPANDEX



C23040
CAP SLEEVE TOP WITH CONTRAST
01 59 255 125
Size: XS - XL



C20020
3/4 SLEEVE TOP WITH RUFFLE
01 64 255 135
Size: XS - XL



C22120
TANK TOP WITH RUFFLE
01 59 255 125
Size: XS - XL



C32010
TIE FRONT 3/4 SLEEVE DRESS
01 92 255 195
Size: 2 - 16

LUX MATTE JERSEY 70% ACETATE 20% POLYAMIDE 10% ELASTANE



C20090
KNOT FRONT TOP
01 82 255 175
Size: XS - XL



C41140
SOFT DRAWSTRING TOPPER
01 115 255 245
Size: XS - XL



C23110
DRAPE NECKLINE TANK
????
Size: XS - XL



C01040
SOFT PANT
01 92 255 195
Size: XS - XL



C33040
DRAPED DRESS WITH DRAPED TOP
????
Size: XS - XL

LUX MATTE JERSEY (cont'd) 70% ACETATE 20% POLYAMIDE 10% ELASTANE



C34080
DRAPE NECKLINE TANK DRESS
01 129 255 275
Size: XS - XL



C11050
SOFT PLEATED SKIRT
01 139 255 295
Size: XS - XL

SORONA SHIELD 67% SORONA POLYESTER 33% POLYESTER



Black



C46090
SHORT TIERED JACKET
01 139 255 295
Size: 2 - 16

FINE STRETCH COTTON SHIRTING 98% COTTON 2% ELASTANE



White



C20300
TUNIC SHIRT WITH PLEATED HEM
01 106 255 225
Size: 2 - 16



C22080
FRONT TIE SLEEVELESS SHIRT
????
Size: 2 - 16

PONTE STRETCH 95% VISCOSE 5% ELASTANE



Black



C41160
SHORT BELTED JACKET
????
Size: 2 - 16



C01080
BOOT CUT PANT
????
Size: 2 - 16



C34180
SHEATH DRESS
????
Size: 2 - 16



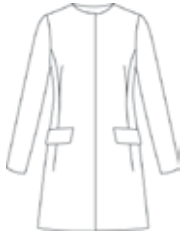
miami

Delivery: February 1 - 28th, 2012



Ocean Mix

PEONY FLORAL PRINTED COTTON 97% COTTON 3% ELASTANE



C45010
JEWEL NECK LONG JACKET
01 204 255 435
Size: 2 - 16



C01060
FLAT FRONT CAPRI PANT
01 73 255 155
Size: 2 - 16



C11010
PENCIL SKIRT WITH PIPING DETAIL
01 82 255 175
Size: 2 - 16



C34040
TANK DRESS WITH PIPING DETAIL
01 125 255 265
Size: 2 - 16

STRETCH COTTON SATEEN 97% COTTON 3% SPANDEX



White



C46040
SHORT JACKET WITH PLEAT DETAIL
????
Size: 2 - 16



C46050
FUNNEL NECK FRONT ZIP JACKET
????
Size: 2 - 16



C01050
BOOT LEG FLAT FRONT TROUSER
01 87 255 185
Size: 2 - 16



C01010
FLAT FRONT CAPRI PANT
01 64 255 135
Size: 2 - 16

PEONY PRINTED JERSEY 96% VISCOSE 45 ELASTANE



Ocean Mix



C22070
FRONT DRAPE NECK TOP
01 72 255 155
Size: XS - XL



C22060
DRAWSTRING DRAPE COLLAR TOP
01 92 255 195
Size: XS - XL

SUMMER JERSEY 94% VISCOSE 6% ELASTANE



Ocean

Quince



C22090
DRAPE TANK WITH CHIFFON COLLAR
????
Size: XS - XL



C22110
RACER BACK TANK TOP
????
Size: XS - XL



C41120
SOFT DRAWSTRING TOPPER
01 92 255 195
Size: XS - XL



C32020
TIE FRONT 3/4 SLEEVE DRESS
01 92 255 195
Size: XS - XL



GARDEN FLORAL CHIFFON 100% POLYESTER



C20050
PICOT TRIMMED SOFT SHIRT
01 139 255 295
Size: 2 - 16



C23030
SOFT TIE CAP SLEEVE BLOUSE
01 134 255 285
Size: 2 - 16



C34070
SLEEVELESS SOFT SIDE DRAPED DRESS
01 214 255 455
Size: 2 - 16

VINTAGE LACE 90% VISCOSE 10% POLYAMIDE



C33020
HALF SLEEVE LACE DRESS
????
Size: 2 - 16

EYELET LACE 77% RAYON 23% NYLON

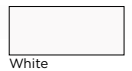


C46060
SHORT BOAT NECK JACKET
????
Size: 2 - 16



C34100
SCOOP NECK SUNBURST DRESS
????
Size: 2 - 16

FINE STRETCH COTTON SHIRTING 98% COTTON 2% ELASTANE



C20030
TUNIC SHIRT WITH PLEATED HEM
????
Size: 2 - 16



C22080
FRONT TIE SLEEVELESS SHIRT
????
Size: 2 - 16

LUX MATTE JERSEY 70% ACETATE 20% POLYAMIDE 10% ELASTANE



Sapphire



C20090
KNOT FRONT TOP
01 82 255 175
Size: XS - XL



C41140
SOFT DRAWSTRING TOPPER
01 115 255 245
Size: XS - XL



C23110
DRAPE NECKLINE TANK
????
Size: XS - XL



C01040
SOFT PANT
01 92 255 195
Size: XS - XL



C33040
DRESS WITH DRAPE TOP
01
Size: XS - XL

LUX MATTE JERSEY (cont'd) 70% ACETATE 20% POLYAMIDE 10% ELASTANE



Sapphire



C34080
DRAPE NECKLINE TANK DRESS
01 129 255 275
Size: XS - XL



C11050
SOFT PLEATED SKIRT
01 139 255 295
Size: XS - XL

FAUX ANIMAL PRINT JERSEY 95% VISCOSE 5% ELASTANE



Black



C21010
CAP SLEEVE 2 WAY TUNIC
01 68 255 145
Size: XS - XL

AGENT LISTING

CANADA

Corporate Office, Eleventh Floor Apparel

Laura James, Sales Manager 416-696-2818 ext 225

Customer Service 1-800-665-4632

info@eleventhfloorapparel.com

Ontario, Joan MacKay 416-696-2818 ext 277

Quebec, Jacqueline Salama & Chantale Blanchette 514-387-3919

Western Canada, Dan & Vera Matwichyna 604-683-3730

Maritimes, Karin Spencer 902-823-2099

UNITED STATES

North East & South Central, 212 Showroom NYC, Michelle Vella 212-302-0243

Southern Atlantic, Jerry & Teddy Lessner 404-851-0184

North Central, Richard Zollett & Sherri Kirschbaum 312-832-9333