

I-794 Lake Freeway / Hoan Bridge Project Update

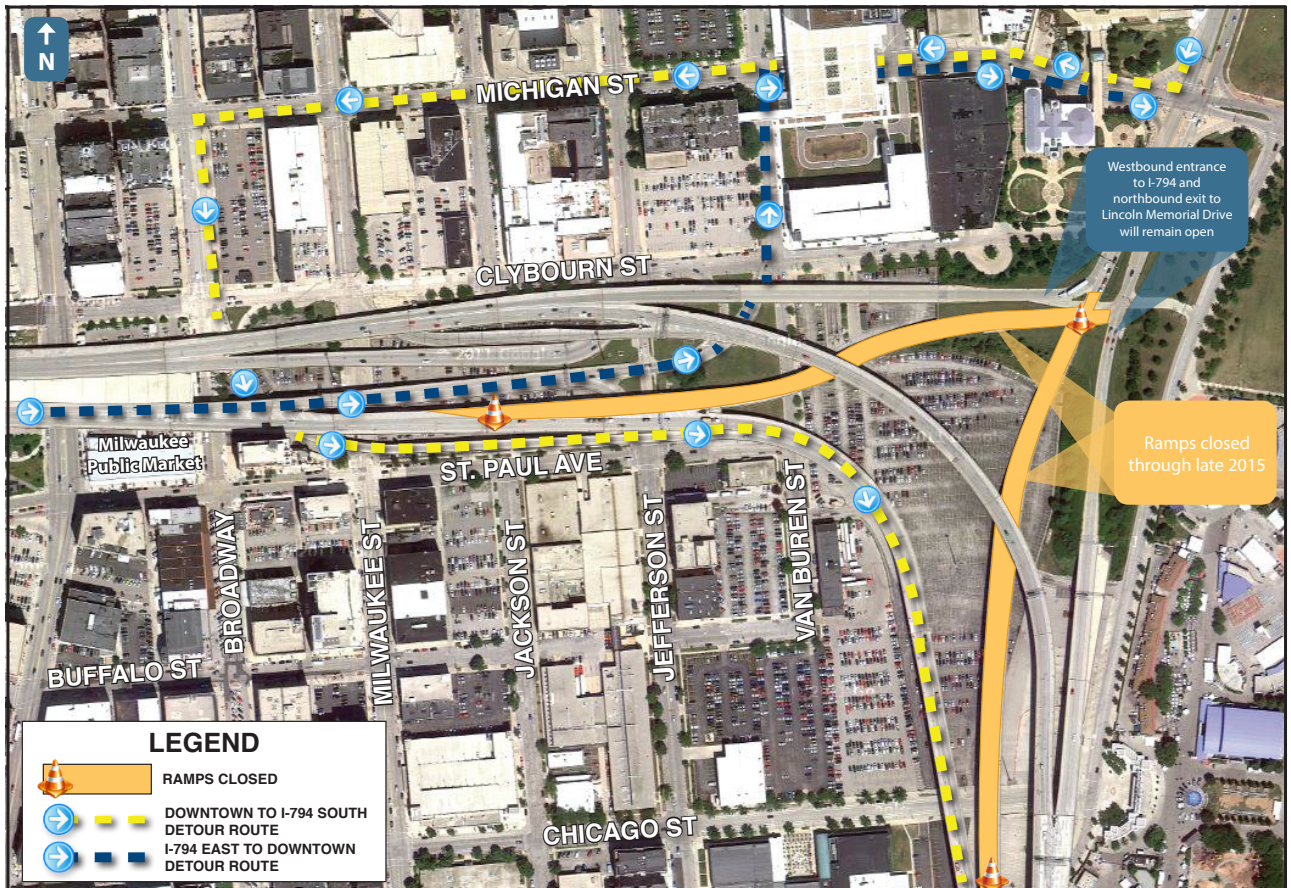


**I-794 LAKE FREEWAY /
HOAN BRIDGE
WORK TO BEGIN**

In mid-October, work will begin in preparation for the I-794 Lake Freeway / Hoan Bridge Project. This work includes improving local intersections and building ramps and crossovers to prepare for construction. As part of this work, the I-794 East exit to Lincoln Memorial Drive will close from early November 2013 until Fall 2015. Motorists are advised to take the Jackson / Van Buren Street exit to Michigan Street and travel east to Lincoln Memorial Drive. (see map below) The Lincoln Memorial Drive southbound entrance ramp to I-794 East (Southbound) will also close during this time. Motorists should utilize the Broadway Street entrance ramp to access I-794 East (Southbound) (see map below).

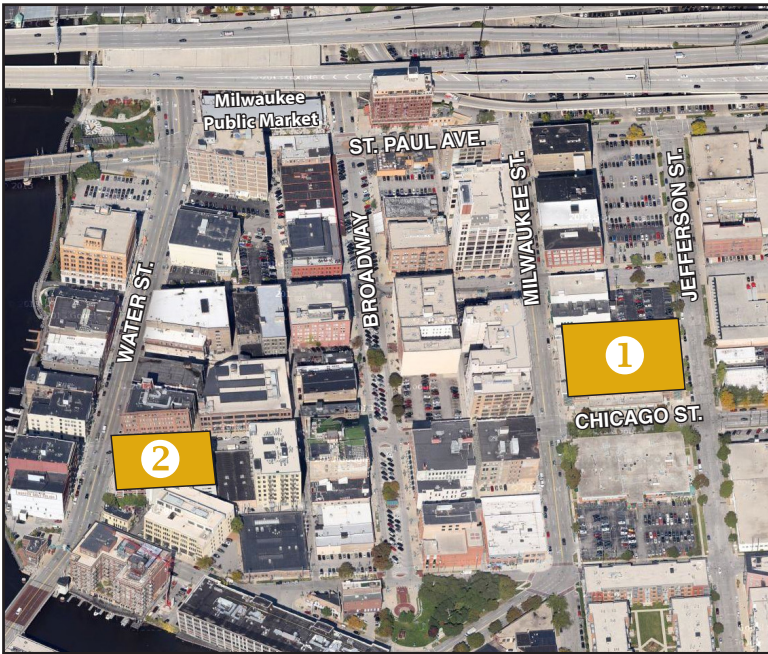
In late 2013 / early 2014 additional traffic changes will take place. This will include lane restrictions and additional ramp closures. Periodic updates will be sent throughout the project to remind motorists of upcoming closures, detour routes and other project related impacts.

**LINCOLN MEMORIAL DRIVE DETOURS
EARLY NOVEMBER 2013 TO LATE 2013**



ACCESS TO THE HISTORIC THIRD WARD AND DOWNTOWN MILWAUKEE MAINTAINED

While WisDOT anticipates keeping as much access within the construction area open as possible, there will be ramp closures during construction. When specific ramps are closed, signs will be posted to help guide people along alternate routes to and from the Third Ward and Downtown.



PARKING IMPACTS

There will be parking lot impacts for up to two years, between Water Street and Jackson Street, and on-street parking impacts along Michigan, Broadway and Milwaukee Streets.

Please contact the lot operators for details on available parking.

The Historic Third Ward's two public parking structures will be available throughout construction and located at:

- ① 212 N. Milwaukee Street (Corner of Milwaukee Street and Chicago Street - entrance on Milwaukee Street)
- ② 225 E. Chicago Street (Corner of Water Street and Chicago Street - entrance on Chicago Street)

Visit ParkMilwaukee.com for detailed parking availability during construction.

"IN THIS TOGETHER"

BUSINESS STRATEGIES AND ASSISTANCE

"In This Together" is a WisDOT program that targets statewide businesses facing road construction in their community. The program's goal is to help businesses maintain business while construction is underway.

WisDOT recognizes that businesses located in work zones have special needs. It is critical that customers have access and continue to patronize the businesses, in spite of roadwork inconvenience.

Strategies that the project team can assist businesses with include:



- Personalized Direction Sheets
- Business Signage during Full Closures
- Website links
- Customized Messages to Customers

WHAT TO EXPECT DURING CONSTRUCTION

Some construction activities are likely to create noise and/or dust. Be assured that we always work hard to minimize the impact of these events, but, if you have a concern, please do not hesitate to contact us so that we can address the issue immediately. Work that may be especially noisy or dusty will include:

- pile driving • pavement breaking and crushing
- retaining wall construction • excavation
- trucking • night construction



[@wihoanbridge](https://twitter.com/wihoanbridge)
[/wihoanbridge](https://www.facebook.com/wihoanbridge)
www.projects.511wi.gov



Keep in mind, the City of Milwaukee is currently undertaking the rehabilitation of the St. Paul Bridge. This project has been coordinated with the I-794 Lake Freeway / Hoan Bridge Project.

For more information on the St. Paul Bridge Rehabilitation project, please visit [http://](http://city.milwaukee.gov/mpw/supportforbusiness/projectsummaries/StPaulBridgeRehabilitation.htm)

city.milwaukee.gov/mpw/supportforbusiness/projectsummaries/StPaulBridgeRehabilitation.htm

Contact Information:

Carolynn Gellings, P.E., WisDOT Project Manager
141 NW Barstow Street, P.O. Box 798, Waukesha, WI 53187
(262) 548-8716 / carolynn.gellings@dot.wi.gov

