

## IT Training for all your needs:

- Microsoft Technical
- Cisco
- VMware
- CompTIA
- CITRIX
- Security
- Microsoft Office
- Project Management
- Business Skills
- Design and Media

## Our Official Training Partners:



**Microsoft** Partner  
Gold Learning



More Courses, More Flexibility, Scheduled More Often

# TABLE OF CONTENTS

3	Learning Modalities
4	Top Certification Programs
5	Microsoft Career Paths
8	Microsoft Technical Training
14	Cisco Career Paths
18	Cisco Technical Training
22	Technical Training
26	VMware Training
28	PC Desktop Applications Training
32	Business Skills Training
36	Project Management Training
38	Worldwide Locations



## LEARNING METHODS AND CLASS TIMES

### **ILT** Instructor-Led Training

Certified instructors guide learners through material in a classroom setting where they can participate in group activities, complete labs, and ask questions.

### **OLL** Online LIVE®

New Horizons Online LIVE® removes geographical boundaries from learning by bringing students and instructors together synchronously in a virtual live classroom. This innovative program provides students with all of the benefits of being in a dynamic interactive learning environment — while enabling students to study from work, home, or from a New Horizons center.

### **ML** Mentored Learning®

New Horizons Mentored Learning® is a Microsoft Innovation Award-winning training methodology that allows students to learn at their own pace with a certified instructor. With Mentored Learning®, students choose when they want to study by leveraging flexible learning schedules that free them from being constrained by the traditional 9-5 multiday class schedule.

### **OLA** Online ANYTIME®

Flexible, focused and fast alternative to learning in a classroom environment. Self-paced to ensure you learn the skills you need.

Visit our website at [www.newhorizons.com](http://www.newhorizons.com) for a complete listing of courses. The list of courses is updated constantly, ensuring current titles contain up-to-the-minute information!

**AT NEW HORIZONS**, New Horizons Computer Learning Centers Integrated Learning® is a complete method of training through all stages of the learning lifecycle –Access, Learn, Reinforce, Support and Validate – delivered through flexible learning options including Instructor Led Classroom, Online LIVE® (virtual classroom), Mentored Learning® (personal instruction) and Online Anytime® (self-paced e-learning). New Horizons provides you with more courses, more flexibility and scheduled more often.



**ILT**

**Instructor-Led Training**

**CLASSROOM ILT** As the foundation of our integrated learning approach, the classroom experience has become a more enriching, dynamic and valuable learning experience for students. Classroom Learning students have their own networked environments, which enable instructors to manage hands-on lab demonstrations and exercises that mirror the professional environment. Our state of the art, fully configured live lab environment, provides students hands-on access to the systems and applications taught in our classrooms, empowering them to learn in the classroom as well as learning on their own schedules. Classroom Learning has been enhanced to include Web-based resources, such as tutorials and simulations, during and after class. A post assessment is completed by every student to gauge the return on a company's investment and measure increased productivity.



**OLL**

**Online LIVE**

**ONLINE LIVE®** New Horizons Online LIVE® removes geographical boundaries from learning by bringing students and instructors together synchronously in a virtual live classroom. This innovative program provides students with all of the benefits of being in a dynamic interactive learning environment — while enabling students to study from work, home, or from a New Horizons center. OLL classes follow the same framework as our traditional instructor-led training. By combining lecture, group discussions, hands-on simulated labs and vendor authorized curriculum - our certified trainers provide instruction through our collaborative eLearning platform. Our fully configured live lab environment, provides students hands-on access to the systems and to use the same applications taught in our classrooms, therefore making remote instruction seamless. With a robust schedule and varied open-enrollment training schedule, chances are the class you want to learn begins next week.



**ML**

**Mentored Learning**

**MENTORED LEARNING®** Mentored Learning® is a Microsoft Innovation Award–winning training methodology that allows students to learn at their own pace with a certified instructor. With Mentored Learning®, students choose when they want to study by leveraging flexible learning schedules that free them from being constrained by the traditional 9–5 multiday class schedule. This is accomplished through a learning environment which provides students with simultaneous access to information delivered via audio and video, a simulated production environment, and a mentor to guide them through the process and provide one-on-one support. Our real-time, cloud-based lab solution allows students to access their labs easily while they are learning. Students control the content covered and the pace at which they learn so they can focus on the specific skills they need to achieve their goals. Hands-on practice reinforces those skills and one-on-one support and guidance from a certified instructor increase comprehension and retention of course material. The result is a truly learner-centric training solution that meets the needs of a multitude of students with varying skill levels and learning



**OLA**

**Online ANYTIME**

**ONLINE ANYTIME®** is a self-paced e-learning method that is convenient and easy. You can fit learning into your busy schedule, whether you are in the office, at home, or on the road. Your courses are available when you are, any time of the day or night. Online ANYTIME is convenient and easy. Learning can be fit into any busy schedule, either at the office, on the road or at home. Courses are available anytime from anywhere. Online ANYTIME Learning is a Web-based training platform and features the same content as our world-renowned instructor-led training.

With more than 3,000 courses, there is something for everyone, from high-level technical training to basic desktop applications and business skills. Plus, the online courses are completely searchable so when you want to learn a specific skill, you can pinpoint the exact part of the course you need to view.

## Top Certification Training Programs

**AT NEW HORIZONS**, we know that technology is integrated into every aspect of business today and is vital in helping organizations achieve and maintain a competitive advantage. IT departments must align themselves with business strategies and deliver clear value in solving business problems. It is critical that individuals in IT roles be proficiently trained and skilled to support business goals and objectives.

**MICROSOFT CERTIFICATION:** As part of the largest network of Microsoft Gold and Silver Learning Partners, New Horizons offers Microsoft certification training using only Microsoft Official Curriculum and taught by Microsoft Certified Trainers (MCTs). Certification training includes courses mapping to Microsoft Certified Technology Specialist (MCTS), Microsoft Certified IT Professional (MCITP), Microsoft Certified Professional Developer (MCPD), Microsoft Certified Solutions Administrator (MCSA), Microsoft Certified Solutions Expert (MCSE), Microsoft Office Specialist (MOS), and the new Microsoft Technology Associate (MTA).

**VMWARE CERTIFICATION:** New Horizons delivers authorized VMware world-class certification training designed to validate and recognize IT professionals with the technical capabilities and real-world experience needed to effectively install, manage, deploy and support VMware products and solutions.

**CISCO CERTIFICATION:** Cisco certifications are quickly becoming the most sought after certifications in IT. By becoming Cisco certified, you demonstrate the unique ability to manage, secure and administer networks run on Cisco equipment. New Horizons offers authorized Cisco courses to help obtain your certification goals towards CCNA, CCNP, CCSP and more!

**COMPTIA CERTIFICATION:** As a member of CompTIA, New Horizons has courses that follow the exam objectives of CompTIA's certification programs developed in conjunction with its member organizations. Available certification tracks include: A+, Network+, Security+, Storage+, CompTIA Advanced Security Practitioner (CASP), IT Project+, and Linux+.

**SECURITY CERTIFICATION:** New Horizons offers top security courses and certifications. These include EC-Council's Certified Ethical Hacker (CEH) and Computer Hacking Forensic Investigator (CHFI) certifications, and the Certified Information Systems Security Professional (CISSP) certification from ISC<sup>2</sup> which provides IT Systems Engineers, Security Engineers, and Security Architects with the knowledge of security theories and practices covered in the information systems security Common Body of Knowledge (CBK).

**CITRIX:** Citrix technologies put IT professionals at the forefront of virtualization, networking, and cloud innovation. Popular certifications include Citrix Certified Integration Architect (CCIA), Citrix Certified Administrator (CCA) (CCAA), and Citrix Certified Enterprise Engineer (CCEE).

**LINUX CERTIFICATION:** Linux certification requires extensive knowledge of the Linux Operating System. New Horizons can help you prepare for popular Linux certifications such as Novell's Certified Linux Professional and CompTIA's Linux+.

**NOVELL CERTIFICATION:** The Novell technical education program is the only one that helps you integrate multi-vendor environments and products. And all Novell courses at New Horizons are taught by Certified Novell Instructors (CNIs). Certification tracks available include: Certified Novell Administrator (CNA), Certified Novell Engineer (CNE), Master Certified Novell Engineer (Master CNE), and Certified Directory Engineer (CDE.)

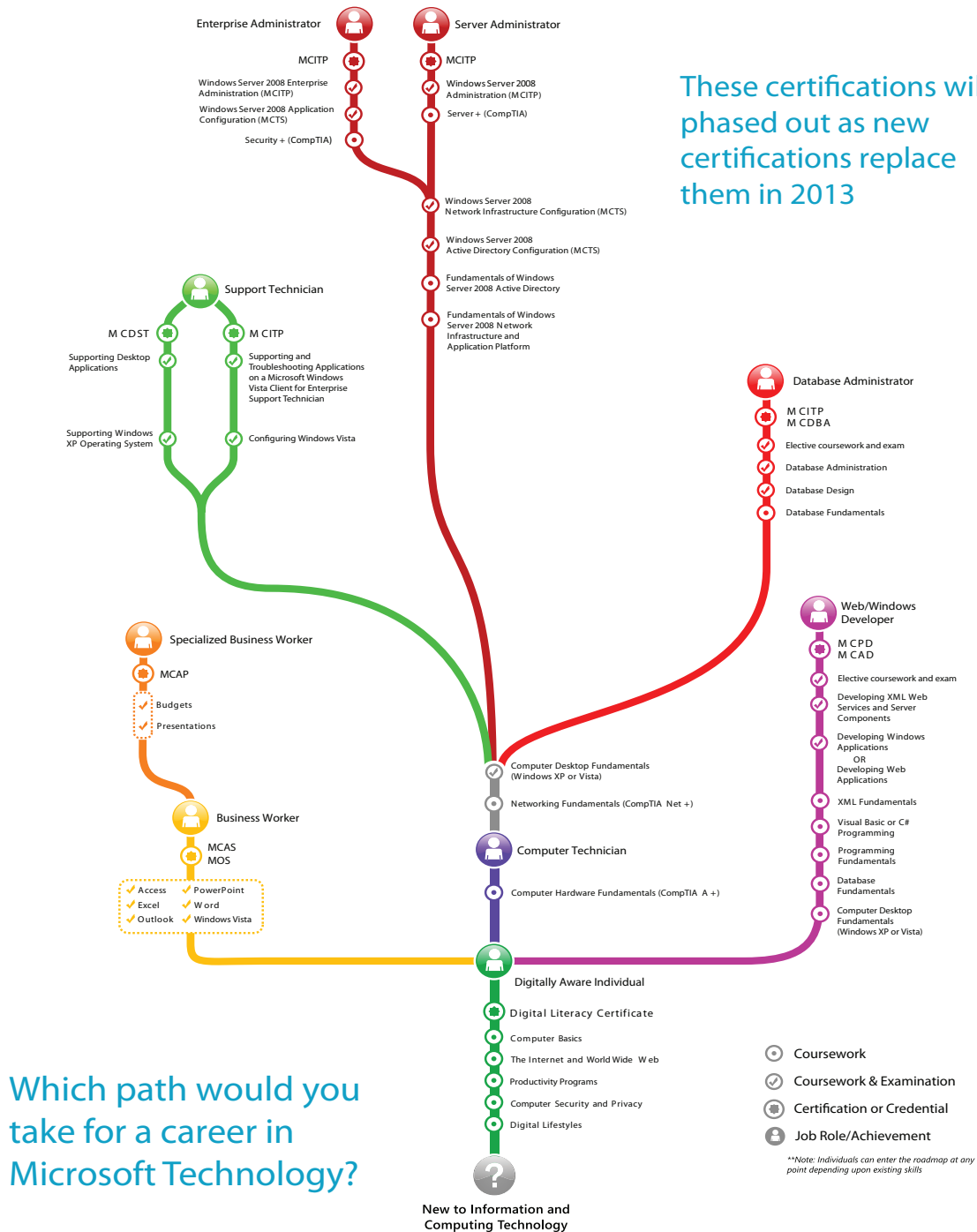
**INFORMATION TECHNOLOGY INFRASTRUCTURE LIBRARY (ITIL):** ITIL focuses on key activities that bring optimal service quality, with a reasonable and justifiable cost, and is supported by accredited training organizations, and implementation and assessment tools. Services in IT Service Management are available at the Foundation, Practitioner, and Manager level.

**PROJECT MANAGEMENT:** Project Management training from New Horizons will help you keep your projects within their budget and delivered on time. Whether your goal is to learn the basics of project management, become certified in project management, or learn project management software, New Horizons has the courses and training you need. New Horizons partners with leading project management vendors including Microsoft, CompTIA and the Project Management Institute (PMI).

**HEALTHCARE INFORMATION MANAGEMENT:** This program will give you the skills and knowledge to acquire a top-quality position in the medical billing and coding industry. Hands-on, interactive teaching methods, combined with certified instructors and real world documents allow for the best learning in the industry. The Healthcare information Management Program can help you achieve the following certifications: CMAA – Certified Medical Administrative Assistant, CBCS - Certified Billing and Coding Specialist, and CPC - Certified Professional Coder.

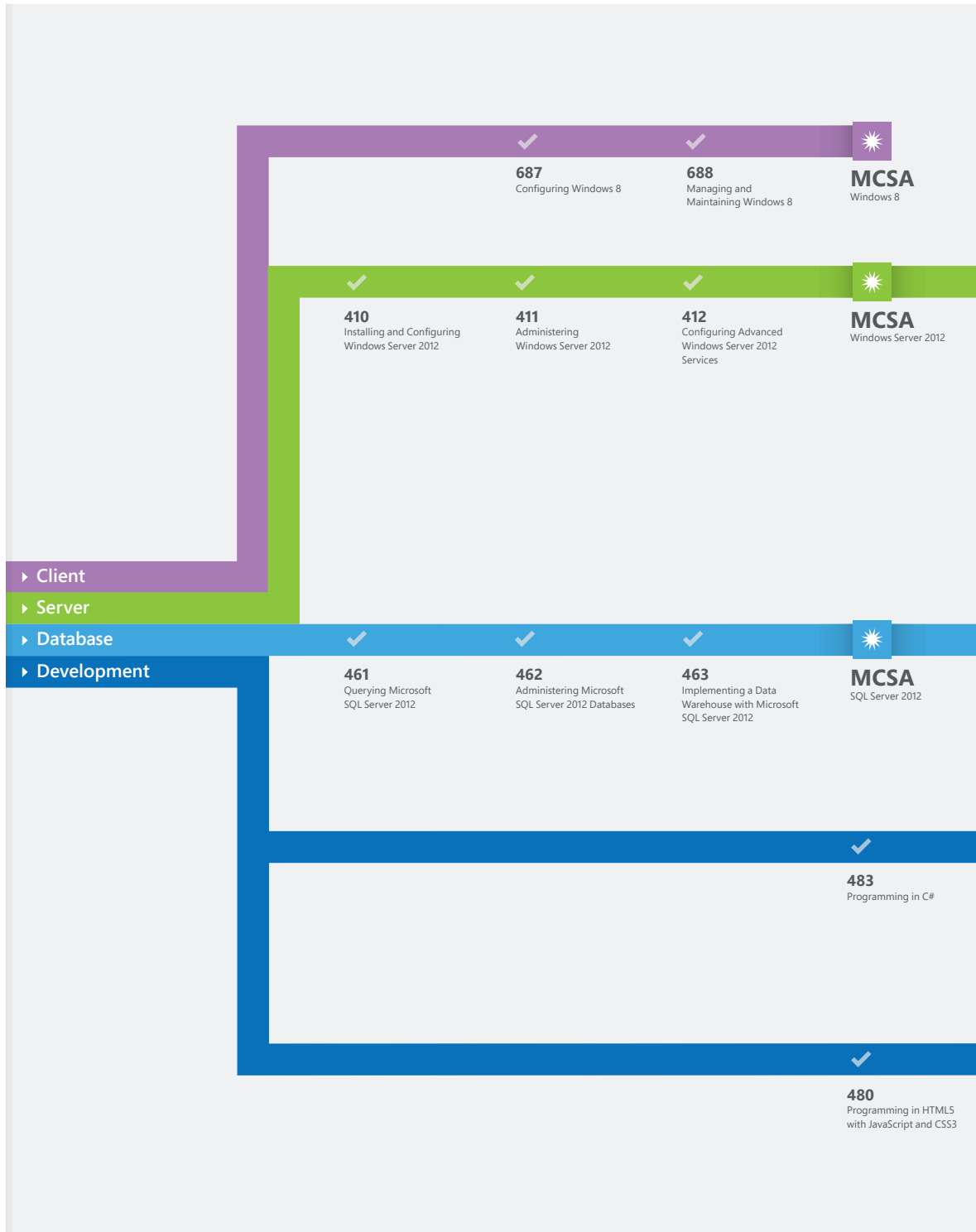
## Microsoft Certified Professional Career Path

These certifications will be phased out as new certifications replace them in 2013



# Microsoft Certified Professional Career Path

Whether you're an experienced IT professional or new to the field, we have the training and certification path that will help lead you to success. Our classes are taught by Microsoft Certified Trainers, so you can be confident that the lesson material is accurate, complete, and up to date. Great training leads to Microsoft Certification—the premier credential of IT professionals worldwide. Certification is available for a diverse spectrum of job roles and responsibilities, and validates your ability to get the job done right.



# Microsoft Certified Professional Career Path

## Certification Destinations:

**MCSE**  
Desktop Infrastructure



**415**  
Implementing a  
Desktop Infrastructure



**416**  
Implementing Desktop  
Application Environments



**413**  
Designing and Implementing  
a Server Infrastructure



**414**  
Implementing an Advanced  
Server Infrastructure



**246**  
Monitoring and Operating  
a Private Cloud with  
System Center 2012



**247**  
Configuring and Deploying a  
Private Cloud with System Center 2012



**464**  
Developing Microsoft  
SQL Server 2012 Databases



**465**  
Designing Database Solutions  
for Microsoft SQL Server 2012



**466**  
Implementing Data Models  
and Reports with Microsoft  
SQL Server 2012



**467**  
Designing Business  
Intelligence Solutions with  
Microsoft SQL Server 2012



**484**  
Essentials of Developing  
Windows Store Apps using C#



**485**  
Advanced Windows Store App  
Development using C#



**481**  
Essentials of Developing  
Windows Store Apps using  
HTML5 and JavaScript



**482**  
Advanced Windows Store  
App Development using  
HTML5 and JavaScript



**486**  
Developing ASP.NET 4.5  
MVC Web Applications



**487**  
Developing Windows Azure  
and Web Services

**MCSE**  
Data Platform

**MCSE**  
Business Intelligence

**MCS D**  
Windows Store Apps – C#

**MCS D**  
Windows Store Apps – HTML5

**MCS D**  
Web Apps



## Microsoft Technical Training

### IT PROFESSIONAL

#### WINDOWS 7

##### (6292) INSTALLING AND CONFIGURING WINDOWS 7 CLIENT – 3 DAYS

This course is intended for IT professionals who are interested in expanding their knowledge base and technical skills on the Windows 7 Client. In this course, students learn to install, upgrade, and migrate to Windows 7 client. Students then configure Windows 7 client for network connectivity, security, maintenance, and mobile computing. **ILT OLL ML**

##### (6293) TROUBLESHOOTING AND SUPPORTING WINDOWS 7 IN THE ENTERPRISE – 3 DAYS

This course teaches students with experience in Windows XP and Vista in a Tier 2 support environment, how to support the operating system and solve technical troubleshooting problems in a Windows 7 and Windows Server 2008 R2 networking environment. **ILT OLL ML**

##### (6294) PLANNING AND MANAGING WINDOWS 7 DESKTOP DEPLOYMENTS AND ENVIRONMENTS – 5 DAYS

This course will teach students how to plan and deploy Windows 7 desktops in large organizations. They will also learn how to design, configure, and manage the Windows 7 client environment. **ILT OLL ML**

##### (50322) CONFIGURING AND ADMINISTERING WINDOWS 7 - 5 DAYS

Students will learn to configure and administer Microsoft Windows 7 as a standalone installation or in a corporate environment as a part of a Windows Active Directory domain. **ILT OLL**

##### (50331) WINDOWS 7 ENTERPRISE DESKTOP SUPPORT TECHNICIAN – 5 DAYS

This five-day instructor-led course provides students with the knowledge and skills needed to isolate, document and resolve problems on a Windows 7 desktop or laptop computer. It will also help test takers prepare for the 70-685 exam. **ILT OLL**

#### WINDOWS 8

##### (20687) CONFIGURING WINDOWS 8 – 5 DAYS

Throughout the course, students will use Windows PowerShell 3.0, and its graphical user interface (GUI) to configure and manage the system. Students will also use the scripting editor to create and examine PowerShell scripts used to manage the system. **ILT OLL**

##### (20688) MANAGING AND MAINTAINING WINDOWS 8 – 5 DAYS **ILT OLL**

#### SYSTEM CENTER 2012

##### (10747) ADMINISTERING SYSTEM CENTER 2012 CONFIGURATION MANAGER – 5 DAYS

Students will gain the knowledge and skills to configure and manage a System Center 2012 Configuration Manager site and its associated site systems in the role of Configuration Manager administrators. **ILT OLL**

##### (10748) DEPLOYING SYSTEM CENTER 2012 CONFIGURATION MANAGER – 3 DAYS

Students will learn how to plan and deploy a System Center 2012 Configuration Manager hierarchy, including a central administration site (CAS), one or more primary sites and secondary sites, and all associated site systems. **ILT OLL**

##### (10750) MONITORING AND OPERATING A PRIVATE CLOUD WITH SYSTEM CENTER 2012 5 DAYS

This course describes how to monitor and operate a private cloud with Microsoft System Center 2012. This course focuses on how to manage and administer the private cloud, and it describes how you can monitor key infrastructure elements and more. **ILT OLL**

##### (10751) CONFIGURING AND DEPLOYING A PRIVATE CLOUD WITH SYSTEM CENTER 2012 5 DAYS

This course describes private cloud configuration and deployment with Microsoft System Center 2012. **ILT OLL**

##### (50524) INSTALLING AND CONFIGURING SERVICE LEVEL DASHBOARD – 2 DAYS

Students will gain the knowledge and skills to create Service Level Dashboards to monitor the Service Level Objectives defined in System Center Operations Manager 2007 R2. **ILT OLL**

#### WINDOWS SERVER 2012

##### (20410) INSTALLING AND CONFIGURING WINDOWS SERVER 2012 – 5 DAYS

Students will learn to implement a core Windows Server 2012 Infrastructure in an existing enterprise environment. **ILT OLL**

##### (20411) ADMINISTERING WINDOWS SERVER 2012 – 5 DAYS

Students will learn the administration tasks necessary to maintain a Windows Server 2012 infrastructure, such as user and group management, network access and data security. **ILT OLL**



**NEW HORIZONS** has the world's largest network of Certified Microsoft Learning Partners. We offer organizations and individuals the widest selection of Microsoft Official Curriculum titles, each one delivered by Microsoft Certified Trainers (MCTs). Microsoft training helps improve team productivity, reduce downtime, increase employee satisfaction and loyalty, and helps IT professionals and developers master technologies to improve career opportunities. Whether you are working toward certification or just enriching your knowledge, Microsoft training from New Horizons can help you reach your goals.

**(20412) CONFIGURING ADVANCED WINDOWS SERVER 2012 SERVICES – 5 DAYS**

Students will learn advanced configuration and services tasks necessary to deploy, manage and maintain Windows Server 2012 infrastructure, such as identity management, identity federation, network load balancing, business continuity and disaster recovery. **ILT OLL**

**(20413) DESIGNING AND IMPLEMENTING A SERVER INFRASTRUCTURE – 5 DAYS**

This course provides you with the skills and knowledge needed to plan, design, and deploy a physical and logical Windows Server 2012 Active Directory Domain Services (AD DS) infrastructure. **ILT OLL**

**(20414) IMPLEMENTING AN ADVANCED SERVER INFRASTRUCTURE – 5 DAYS**

In this course, students will learn how to plan and implement some of the more advanced features available in Windows Server 2012. **ILT OLL**

**(20415) IMPLEMENTING A DESKTOP INFRASTRUCTURE – 5 DAYS**

This course provides guidance on planning and deploying desktops by using several technologies such as User State Migration Tool (USMT), Microsoft Deployment Toolkit (MDT), Virtual Desktop Infrastructure (VDI), and more. **ILT OLL**

**(20416) IMPLEMENTING DESKTOP APPLICATION ENVIRONMENTS – 5 DAYS**

This course provides students with the skills and knowledge to be able to design, deploy and manage a physical as well as a virtual Windows Server 2012 application management infrastructure. **ILT OLL**

**(20417) UPGRADING YOUR SKILLS TO MCSA WINDOWS SERVER 2012 – 5 DAYS**

The student will learn new features and functionality in Windows Server 2012 around Management, Networking Infrastructure, Storage, Access Control, Hyper-V, High Availability, and Identity Federation. **ILT OLL**

**WINDOWS SERVER 2008**

**(6425) CONFIGURING WINDOWS SERVER 2008 ACTIVE DIRECTORY DOMAIN SERVICES 5 DAYS**

This course provides in-depth training on implementing, configuring, managing and troubleshooting Active Directory Domain Services (AD DS) in Windows Server 2008 and Windows Server 2008 R2 environments. **ILT OLL ML**

**(10159) UPDATING YOUR WINDOWS SERVER 2008 TECHNOLOGY SPECIALIST SKILLS TO R2 – 3 DAYS**

Students will learn Windows Server 2008 Technology Specialist skills and new features of Windows Server 2008 R2. The course facilitates accelerated learning of Windows Server 2008 R2 features and features enabled in Windows Server 2008 R2 for Windows 7. **ILT OLL ML**

**(10215) IMPLEMENTING AND MANAGING MICROSOFT SERVER VIRTUALIZATION 5 DAYS**

The course provides details on how to deploy and manage Hyper-V and Remote Desktop Services on Windows Server 2008 R2. The course also provides details on how to manage a server virtualization environment by using System Center products. **ILT OLL ML**

**(50404) OVERVIEW OF ACTIVE DIRECTORY RIGHTS MANAGEMENT SERVICES WITH WINDOWS SERVER 2008 R2 – 2 DAYS**

This course provides students with the knowledge to understand the role that Microsoft Active Directory Rights Management Services (AD RMS) plays in a wider infrastructure, and how it interacts with other Microsoft technologies. **ILT OLL ML**

**(6416) UPDATING YOUR NETWORK INFRASTRUCTURE AND ACTIVE DIRECTORY SKILLS TO WINDOWS SERVER 2008 – 5 DAYS**

This course provides students with the knowledge and skills to work with Network Infrastructure and Active Directory technologies in Windows Server 2008. It is intended for individuals who already have experience with Network Infrastructure and Active Directory technologies in Windows Server 2000 or Windows Server 2003 to upgrade their skills to Windows Server 2008. **ILT OLL ML**

**(6418) DEPLOYING WINDOWS SERVER 2008 3 DAYS**

This course provides students with an understanding of migrating and deploying Windows Server 2008 R2. You will learn how to automate server deployment, as well as provide guidelines, best practices that will help you migrate to Windows Server 2008 R2. **ILT OLL ML**

**(6419) CONFIGURING, MANAGING, AND MAINTAINING WINDOWS SERVER 2008 SERVERS – 5 DAYS**

This course combines five days worth of training content from the Network Infrastructure Technology Specialist, Active Directory Technology Specialist, and IT Professional Server Administrator courses of Windows Server 2008. **ILT OLL ML**

**(6428) CONFIGURING AND TROUBLESHOOTING WINDOWS SERVER 2008 TERMINAL SERVICES 2 DAYS**

This course provides students with the knowledge and skills to configure, manage, monitor, and troubleshoot a Terminal Services (TS) environment. The course focuses on configuring of TS core functionality, TS licensing, TS Gateway, and TS Web Access. **ILT OLL ML**

**(6433) PLANNING AND IMPLEMENTING WINDOWS SERVER 2008 – 5 DAYS**

The course content and exercises direct you toward making decisions and providing guidance to others. This course reflects the decision-making tasks that a server administrator undertakes. **ILT OLL ML**

**(6434) AUTOMATING WINDOWS SERVER 2008 ADMINISTRATION WITH MICROSOFT WINDOWS POWERSHELL – 3 DAYS**

This course provides students with the knowledge and skills to utilize Windows PowerShell for administering

and automating administration of Windows Server 2008. It focuses on cmdlets, script structure and flow control, language syntax, and implementation details of scripting administrative tasks using COM, WMI, and .NET foundations. **ILT OLL ML**

**(6435) DESIGNING A WINDOWS SERVER NEW 2008 NETWORK INFRASTRUCTURE – 5 DAYS**

This course will provide students with an understanding of how to design a Windows Server 2008 Network Infrastructure that meets business and technical requirements for network services. **ILT OLL ML**

**(6437) DESIGNING A WINDOWS SERVER 2008 APPLICATIONS INFRASTRUCTURE – 3 DAYS**

This course will prepare IT professionals for the role of Enterprise Administrator. Students will learn how to design application infrastructure solutions based on Windows Server 2008 to meet varying business and technical requirements. **ILT OLL ML**

**(6438) IMPLEMENTING AND ADMINISTERING WINDOWS SHAREPOINT SERVICES 3.0 IN WINDOWS SERVER 2008 – 2 DAYS**

This course provides the knowledge and skills that IT Professionals need to configure Microsoft Windows SharePoint Services in Windows Server 2008. **ILT OLL**

**(6439) CONFIGURING AND TROUBLESHOOTING WINDOWS SERVER 2008 APPLICATIONS INFRASTRUCTURE – 5 DAYS**

This course provides the knowledge and skills that IT This course introduces students to a series of Windows Server 2008 technologies that are used in common business scenarios, and are often the technical underpinnings for business applications. **ILT OLL**

**ILT** Instructor-Led Training

**OLL** OnLine LIVE - Virtual ILT

**ML** Mentored Learning



# Microsoft Technical Training

## (6423) IMPLEMENTING AND MANAGING WINDOWS SERVER 2008 CLUSTERING 3 DAYS

This course introduces Windows Server 2008 clustering and provides students with the knowledge and skills to implement, maintain, and troubleshoot clusters.

[ILT](#) [OLL](#) [ML](#)

## (6421) CONFIGURING AND TROUBLESHOOTING A WINDOWS SERVER 2008 NETWORK INFRASTRUCTURE – 5 DAYS

This course provides students with the knowledge and skills to configure and troubleshoot a Windows Server 2008 network infrastructure. You will learn to implement and configure secure network access and implement fault tolerant storage technologies. Students will gain an understanding of the network technologies most commonly used with Windows Server 2008 and IP-enabled networks. Students will also learn how to secure servers and maintain update compliance.

[ILT](#) [OLL](#) [ML](#)

## (6426) CONFIGURING AND TROUBLESHOOTING IDENTITY AND ACCESS SOLUTIONS WITH WINDOWS SERVER 2008 ACTIVE DIRECTORY 3 DAYS

This course provides in-depth knowledge on configuring and troubleshooting Identity and Access (IDA) solutions with Windows Server 2008 Active Directory.

[ILT](#) [OLL](#) [ML](#)

## (6420) FUNDAMENTALS OF WINDOWS SERVER 2008 NETWORK AND APPLICATIONS INFRASTRUCTURE – 5 DAYS

This course introduces students to network and applications infrastructure concepts and configurations provided by Windows Server 2008. Students will be able to acquire a fundamental understanding in order to pursue advanced topics available for certification in the network and applications infrastructure areas.

[ILT](#) [OLL](#) [ML](#)

## WINDOWS POWERSHELL

### (10325) AUTOMATING ADMINISTRATION WITH WINDOWS POWERSHELL – 5 DAYS

This course provides students with the knowledge and skills to utilize Windows PowerShell for administering and automating administration of Windows based servers.

[ILT](#) [OLL](#)

### (50412) IMPLEMENTING ACTIVE DIRECTORY FEDERATION SERVICES 2.0 – 4 DAYS

Students will learn terminology, user interfaces, and common configuration scenarios for AD FS, how to design AD FS environments and supporting technology such as a Public Key Infrastructure, and how to design AD FS for security and high availability.

[ILT](#) [OLL](#)

### (50414) MICROSOFT WINDOWS POWERSHELL V2 FOR ADMINISTRATORS – 4 DAYS

Provides students with the knowledge and skills to leverage Microsoft Windows PowerShell v2 to administer their Windows environment. Both the command line environment and the scripting capabilities inherent in Microsoft's automation engine are discussed.

[ILT](#) [OLL](#) [ML](#)

## DYNAMICS 2013

### (80433) REPORTING IN MICROSOFT DYNAMICS® NAV 2013 – 2 DAY

[ILT](#) [OLL](#)

### (80434) FIXED ASSETS IN MICROSOFT DYNAMICS® NAV 2013 – 1 DAY

[ILT](#) [OLL](#)

### (80435) APPLICATION SETUP IN MICROSOFT DYNAMICS® NAV 2013 – 2 DAY

[ILT](#) [OLL](#)

### (80436) C/SIDE INTRODUCTION IN MICROSOFT DYNAMICS® NAV 2013 – 5 DAY

[ILT](#) [OLL](#)

### (80437) C/SIDE SOLUTION DEVELOPMENT IN MICROSOFT DYNAMICS® NAV 2013 – 5 DAY

[ILT](#) [OLL](#)

### (80438) INSTALLATION AND CONFIGURATION IN MICROSOFT DYNAMICS® NAV 2013 – 2 DAY

[ILT](#) [OLL](#)

### (80439) INTRODUCTION IN MICROSOFT DYNAMICS® NAV 2013 – 2 DAY

[ILT](#) [OLL](#)

### (80440) TRADE IN MICROSOFT DYNAMICS® NAV 2013 – 2 DAY

[ILT](#) [OLL](#)

### (80450) DELIVERING MICROSOFT DYNAMICS® SOLUTIONS WITH SURE STEP – 2 DAY

[ILT](#) [OLL](#)

### (80534) FINANCE ESSENTIAL IN MICROSOFT DYNAMICS® NAV 2013 – 3 DAY

[ILT](#) [OLL](#)

### (80535) FINANCE ADVANCED IN MICROSOFT DYNAMICS® NAV 2013 – 3 DAY

[ILT](#) [OLL](#)

## DYNAMICS CRM 2011

### (80290) MARKETING AUTOMATION IN MICROSOFT DYNAMICS CRM 2011 – 1 DAY

This course introduces the capabilities of Sales Management in Microsoft Dynamics CRM that allow you to track and manage the sales process from potential to close.

[ILT](#) [OLL](#)

### (80291) SALES MANAGEMENT IN MICROSOFT DYNAMICS CRM 2011 – 1 DAY

This course introduces the capabilities of Sales Management in Microsoft Dynamics CRM that allow you to track and manage the sales process from potential to close.

[ILT](#) [OLL](#)

### (80292) SERVICE MANAGEMENT IN MICROSOFT DYNAMICS CRM 2011 – 1 DAY

Students will learn how to use the knowledge base and discusses how organizations can browse, locate, and share information in the repository. The course also discusses how to create, manage and use teams and queues in Microsoft Dynamics CRM.

[ILT](#) [OLL](#)

### (80293) SERVICE SCHEDULING IN MICROSOFT (DYNAMICS CRM 2011 – 1 DAY

This course discusses the scheduling process, scheduling engine, and scheduling service activities in detail since they are key entry points in the scheduling process.

[ILT](#) [OLL](#)

### (80294) MICROSOFT DYNAMICS CRM 2011 CUSTOMIZATION AND CONFIGURATION 3 DAYS

This course describes the techniques required to customize Microsoft Dynamics CRM to meet the specialized needs of businesses.

[ILT](#) [OLL](#)

### (80296) MICROSOFT DYNAMICS CRM 2011 INSTALLATION AND DEPLOYMENT – 2 DAYS

The course describes the components used within a Microsoft Dynamics CRM 2011 deployment, installation instructions for the Microsoft Dynamics CRM Server, the E-mail Router, Microsoft Dynamics CRM for Office Outlook, and more.

[ILT](#) [OLL](#)

## EXCHANGE SERVER 2013

### (20341) CORE SOLUTIONS OF MICROSOFT EXCHANGE SERVER 2013 – 5 DAYS

[ILT](#) [OLL](#)

### 20342 ADVANCED SOLUTIONS OF MICROSOFT EXCHANGE SERVER 2013 – 5 DAYS

[ILT](#) [OLL](#)

## EXCHANGE SERVER 2010

### (10165) UPDATING YOUR SKILLS FROM MICROSOFT EXCHANGE SERVER 2003 OR EXCHANGE SERVER 2007 TO EXCHANGE SERVER 2010 – 5 DAYS

This course supports the large numbers of customers still running Exchange 2003 or Exchange 2007 in upgrading their skills and environments to Exchange 2010 Service Pack 1 (SP1).

[ILT](#) [OLL](#)

### (10135) CONFIGURING, MANAGING AND TROUBLESHOOTING MICROSOFT EXCHANGE 2010 – 5 DAYS

This course provides students with the knowledge and skills to configure and manage an Exchange Server 2010 messaging environment, as well as provide guidelines, best practices, & considerations that will help you optimize your Exchange Server deployment.

[ILT](#) [OLL](#)

### (10233) DESIGNING AND DEPLOYING MESSAGING SOLUTIONS WITH MICROSOFT EXCHANGE 2010 – 5 DAYS

This course provides students with the knowledge and skills to design and deploy messaging solutions with Microsoft Exchange Server 2010. It describes how to gather requirements, design and deploy the various server roles in Exchange Server 2010. It explores the various options for implementing messaging security, policies, and compliance and examines the high availability, disaster recovery options and how to develop a troubleshooting plan. Finally, the course describes how to plan the transition from earlier versions of Exchange Server to Exchange Server 2010 and the integration of Exchange Server 2010 with other messaging systems.

[ILT](#) [OLL](#)

### (10508) PLANNING, DEPLOYING, AND MANAGING MICROSOFT EXCHANGE 2010 UNIFIED MESSAGING – 3 DAYS

Students will learn upgrading from Microsoft Exchange Server 2007 UM to Exchange 2010 UM, Microsoft Office Communications Server 2007 integration, and tools and processes to support Unified Messaging planning, installation/setup, and implementation.

[ILT](#) [OLL](#) [ML](#)

### (10533) DEPLOYING, CONFIGURING, AND ADMINISTERING MICROSOFT LYNC SERVER 2010 – 5 DAYS

Students will learn upgrading from Microsoft Exchange Server 2007 UM to Exchange 2010 UM, Microsoft Office Communications Server 2007 integration, and tools and processes to support Unified Messaging planning, installation/setup, and implementation.

[OLL](#) [ML](#)

### (10534) PLANNING AND DESIGNING A MICROSOFT LYNC SERVER 2010 SOLUTION 5 DAYS

In this course, students learn how to plan and design a Lync Server 2010 system. The labs in this course utilize the Lync Server 2010 Planning Workbook and Planning Tool.

[ILT](#) [OLL](#)

Microsoft Software Assurance offers a broad range of value-added benefits in one program, combining the latest software with tools and resources to help you deploy, manage, and migrate software. Software Assurance Training Vouchers (SATVs) are just one benefit and can be redeemed at New Horizons for Microsoft Official Curriculum courses. Contact your Account Executive for more information.

**(20336) CORE SOLUTIONS OF MICROSOFT® LYNC® SERVER 2013 – 5 DAYS** ILT OLL

**EXCHANGE SERVER 2007 / 2003**

**(5047) INTRODUCTION TO INSTALLING AND MANAGING MS EXCHANGE SERVER 2007 3 DAYS**

This course teaches students how to configure and manage a messaging environment in accordance with technical requirements, how to install Exchange Server 2007 and manage routing, client access and the backup and restore of databases. ILT OLL ML

**(5049) MANAGING MESSAGING SECURITY USING MS EXCHANGE SERVER 2007 – 1 DAY**

This course provides messaging specialists with the knowledge and skills to manage messaging security and policies. ILT OLL ML

**(5051) MONITORING AND TROUBLESHOOTING MS EXCHANGE SERVER 2007 – 2 DAYS**

This course teaches messaging specialists to monitor and troubleshoot an Exchange Server 2007 messaging system. ILT OLL ML

**(5050) RECOVERING MESSAGING SERVERS AND DATABASES USING MS EXCHANGE SERVER 2007 1 DAY**

This course teaches messaging specialists to recover Exchange mailboxes and servers in a variety of disaster scenarios. ILT OLL ML

**(5053) DESIGNING A MESSAGING INFRASTRUCTURE USING MICROSOFT EXCHANGE SERVER 2007 – 3 DAYS**

This course provides students with the knowledge and skills to design and secure a messaging infrastructure using Microsoft Exchange Server 2007. ILT OLL ML

**(5054) DESIGNING A HIGH AVAILABILITY MESSAGING SOLUTION USING MICROSOFT EXCHANGE SERVER 2007 – 2 DAYS**

This course teaches messaging engineers to design a high availability messaging solution using Microsoft Exchange Server 2007. Students will create a high availability design to meet service level agreement requirements and learn strategies for gaining approval for the design. ILT OLL ML

**MICROSOFT FOREFRONT**

**(50382) IMPLEMENTING FOREFRONT IDENTITY MANAGER 2010 – 4 DAYS**

Students will learn the features and capabilities of Microsoft Forefront Identity Manager 2010 (FIM), with an overview of the solution scenarios that FIM addresses. ILT OLL

**(50383) UPGRADING IDENTITY LIFECYCLE MANAGER 2007 TO FOREFRONT IDENTITY MANAGER 2010 – 4 DAYS**

Students already acquainted with Microsoft Identity Lifecycle Manager 2007 (ILM) will gain additional knowledge and skills they need to plan for a Microsoft

Forefront Identity Manager 2010 (FIM) deployment. ILT OLL

**(50402) IMPLEMENTING FOREFRONT UNIFIED ACCESS GATEWAY 2010 – 3 DAYS**

Students will learn to design and deploy remote access solutions using Microsoft Forefront Unified Access Gateway 2010 (UAG). ILT OLL

**OFFICE COMMUNICATIONS SERVER**

**(5177) IMPLEMENTING AND MAINTAINING INSTANT MESSAGING USING MS OFFICE COMMUNICATIONS SERVER 2007 – 1 DAY**

This course teaches instant messaging functionalities available in Microsoft Office Communications Server 2007, the architecture in the Standard and Enterprise Editions, and considerations involved in implementing them. ILT OLL ML

**(5178) IMPLEMENTING AND MAINTAINING AUDIO/VISUAL CONFERENCING AND WEB CONFERENCING USING MS OFFICE COMMUNICATIONS SERVER 2007 – 2 DAYS**

This course provides students with the knowledge and skills to plan, deploy, and manage audio/visual and Web conferencing by using Microsoft Office Communications Server 2007. ILT OLL

**(5179) IMPLEMENTING AND MAINTAINING TELEPHONY USING MICROSOFT OFFICE COMMUNICATIONS SERVER 2007 – 2 DAYS**

This course teaches students how to implement and maintain an Office Communications Server 2007 telephony solution. The course covers the topologies supported by Office Communications Server 2007 for deploying a telephony solution for an organization. ILT OLL

**SHAREPOINT**

**(50470) MICROSOFT SHAREPOINT SERVER 2010 FOR THE SITE OWNER/POWER USER 2 DAYS**

This course is designed for the site owner/"power user" of a SharePoint site who needs to know how to create sites and lists, manage user access and customize lists and pages. This class uses the SharePoint Server 2010 version of SharePoint. ILT OLL

**(10174) CONFIGURING AND ADMINISTERING MICROSOFT SHAREPOINT 2010 – 5 DAYS**

Students will learn how to install, configure, and administer Microsoft SharePoint and also how to manage and monitor sites and users by using Microsoft SharePoint 2010. ILT OLL ML

**(10175) MICROSOFT SHAREPOINT 2010, APPLICATION DEVELOPMENT – 5 DAYS**

This course provides existing .NET developers with practical information and labs that enables them to build solutions on the Microsoft SharePoint 2010 platform. ILT OLL ML

**(10231) DESIGNING A MICROSOFT SHAREPOINT 2010 INFRASTRUCTURE – 5 DAYS**

This course teaches IT Professionals to design and plan the deployment of Microsoft SharePoint 2010. ILT OLL ML

**(10232) DESIGNING AND DEVELOPING MICROSOFT SHAREPOINT SERVER 2010 APPLICATIONS – 5 DAYS**

In this course, students learn the skills and best practices that are required to help organizations design and develop effective SharePoint applications. ILT OLL ML

**(50403) IMPLEMENTING ACTIVE DIRECTORY RIGHTS MANAGEMENT SERVICES WITH EXCHANGE AND SHAREPOINT – 4 DAYS**

This course provides students with the knowledge and skills to deploy Microsoft Active Directory Rights Management Services (AD RMS), and to understand the role AD RMS plays in a wider infrastructure and how it interacts with other Microsoft technologies. ILT OLL ML

**(50429) SHAREPOINT 2010 BUSINESS INTELLIGENCE – 5 DAYS**

This course explores how to use SharePoint as your platform for Business Intelligence. Journey through the SharePoint Business Intelligence Center, Excel Services, Reporting Services, Analysis Service, Performance Point and PowerPivot. ILT OLL ML

**(50478) SHAREPOINT 2010 ADVANCED FOUNDATION DEVELOPMENT – 5 DAYS**

This course focuses on SharePoint Foundation 2010 fundamental building blocks such as features, application pages, site pages, Web Parts, custom list types, site columns, content types, custom workflows and site definitions. ILT OLL ML

**(50547) MICROSOFT SHAREPOINT 2010 SITE COLLECTION AND SITE ADMINISTRATION 5 DAYS**

Students will learn to manage, administer and modify a SharePoint 2010 site based on business needs and objectives. The course will also focus on different aspects of Governance, Office 2010 integration, workflows and web parts. ILT OLL

**(5061) IMPLEMENTING MICROSOFT OFFICE SHAREPOINT SERVER 2007 – 3 DAYS**

This course provides students with the knowledge and skills required to implement MS Office SharePoint Server 2007 successfully in their organization. ILT OLL ML

**(10802) MICROSOFT SHAREPOINT 2010 SEARCH FOR IT PROFESSIONALS – 3 DAYS**

This course prepares IT Professionals to administer enterprise search solutions using Microsoft SharePoint® Server 2010 and Microsoft FAST Search Server 2010 for SharePoint. ILT OLL

ILT Instructor-Led Training

OLL OnLine LIVE - Virtual ILT

ML Mentored Learning

  
www.newhorizons.com

# Microsoft Technical Training

## (10805) MICROSOFT SHAREPOINT 2010 SEARCH FOR APPLICATION DEVELOPERS 3 DAYS

In this course, students will learn how to develop enterprise search applications for Microsoft SharePoint 2010. This course builds on the search-related material in 10175A Microsoft SharePoint 2010 Application Development. **ILT OLL**

## (10806) MICROSOFT FAST SEARCH SERVER 2010 FOR SHAREPOINT FOR APPLICATION DEVELOPERS – 2 DAYS

This course is designed to highlight the differentiating features of Microsoft FAST Search Server 2010 for SharePoint, and enable participants to implement effective search-driven applications using this add-on. **ILT OLL**

## INTERNET INFORMATION SERVICES

### (2576) IMPLEMENTING AND ADMINISTERING MICROSOFT INTERNET INFORMATION SERVICES 6.0 – 3 DAYS

This course provides students with the knowledge and skills to implement and administer IIS 6.0. The course focuses on the IIS 6.0 architectural features that improve reliability, security, manageability and performance. **ILT OLL**

### (6427) CONFIGURING AND TROUBLESHOOTING INTERNET INFORMATION SERVICES IN WINDOWS SERVER 2008 – 3 DAYS

This course, the students will learn to install, configure, maintain, and troubleshoot an Internet Information Services (IIS) 7.0 Web Server in Windows Server 2008. **ILT OLL ML**

## MANAGEMENT INSTRUMENTATION

### (6451) PLANNING, DEPLOYING AND MANAGING MICROSOFT SYSTEMS CENTER CONFIGURATION MANAGER 2007 – 5 DAYS

This course provides students with the knowledge and skills to plan, deploy, and manage Configuration Manager 2007. **ILT OLL**

### (50028) MANAGING SYSTEM CENTER OPERATIONS MANAGER 2007 – 5 DAYS

Provides the knowledge and skills to manage a Systems Center Operations Manager 2007 management group and is intended to develop the necessary skills to install and manage Operations Manager 2007 management servers and supporting roles.

## SQL SERVER 2012

### (10774) QUERYING MICROSOFT SQL SERVER 2012 – 5 DAYS

Students will learn technical skills required to write basic Transact-SQL queries for Microsoft SQL Server 2012. This course is the foundation for all SQL Server-related disciplines: Database Administration, Database Development and Business Intelligence. **ILT OLL**

### (10775) ADMINISTERING MICROSOFT SQL SERVER 2012 DATABASES – 5 DAYS

Students will gain the knowledge and skills to maintain a Microsoft SQL Server 2012 database. The course focuses on teaching individuals how to use SQL Server 2012 product features and tools related to maintaining a database. **ILT OLL**

### (10776) DEVELOPING MICROSOFT SQL SERVER 2012 DATABASES – 5 DAYS

Students will learn logical table design, indexing and

query plans, as well as the creation of database objects including views, and stored procedures, along with parameters, and functions. Also covered is procedure coding. **ILT OLL**

### (10777) IMPLEMENTING A DATA WAREHOUSE WITH MICROSOFT SQL SERVER 2012 – 5 DAYS

Students will learn how to create a data warehouse with SQL Server 2012, implement ETL with SQL Server Integration Services, and validate and cleanse data with SQL Server Data Quality Services and SQL Server Master Data Services. **ILT OLL**

### (10778) IMPLEMENTING DATA MODELS AND REPORTS WITH MICROSOFT SQL SERVER 2012 5 DAYS

Students will learn how to implement self-service analytics and reporting, to implement multidimensional analysis solutions, create PowerPivot and tabular data models, and deliver rich data visualizations with PowerView and SQL Server Reporting Services. **ILT OLL**

### 20465 DESIGNING DATABASE SOLUTIONS FOR MICROSOFT® SQL SERVER® 2012 – 5 DAYS

**ILT OLL**

### (20467) DESIGNING BUSINESS INTELLIGENCE SOLUTIONS WITH MICROSOFT® SQL SERVER® 2012– 5 DAYS

**ILT OLL**

### (50592) ADVANCED SQL AZURE – 4 DAYS

Students will learn the basics around server and database provisioning, valid Azure TSQL, and how security is implemented and managed. Advanced topics include partitioning with sharding, database design optimization, backup and synchronization. **ILT OLL**

## SQL SERVER 2008

### (2778) SQL SERVER: WRITING QUERIES USING T-SQL 2008 – 4 DAYS

In this course, students will learn about the features that are available in SQL Server like how to design and create a database, and how to build basic queries using Transact-SQL, the language of SQL Server.. **ILT OLL ML**

### (10337) UPDATING YOUR MICROSOFT SQL SERVER 2008 BI SKILLS TO SQL SERVER 2008 R2 – 3 DAYS

This course focuses on the new features SQL Server 2008 R2 for BI specialists. **ILT OLL ML**

### (6158) UPDATING YOUR SQL SERVER 2005 SKILLS TO SQL SERVER 2008 – 3 DAYS

This course provides students with the knowledge and skills to upgrade their SQL Server 2005 skills to SQL Server 2008. **ILT OLL**

### (6231) MAINTAINING A MICROSOFT SQL SERVER 2008 DATABASE – 5 DAYS

This course provides students with the knowledge and skills to maintain a Microsoft SQL Server 2008 database. The course focuses on teaching individuals how to use SQL Server 2008 product features and tools related to maintaining a database. **ILT OLL ML**

### (6232) IMPLEMENTING A MICROSOFT SQL SERVER 2008 DATABASE – 5 DAYS

This course provides students with the knowledge and skills to implement a Microsoft SQL Server 2008

database. The course focuses on teaching individuals how to use SQL Server 2008 product features and tools related to implementing a database. **ILT OLL ML**

### (6234) IMPLEMENTING AND MAINTAINING MICROSOFT SQL SERVER 2008 ANALYSIS SERVICES – 3 DAYS

This course discusses how to use the Analysis Services development tools to create an Analysis Services database and an OLAP cube, and how to use the Analysis Services management and administrative tools to manage an Analysis Services solution. **ILT OLL ML**

### (6235) IMPLEMENTING AND MAINTAINING MICROSOFT SQL SERVER 2008 INTEGRATION SERVICES – 3 DAYS

This course teaches students how to implement an Integration Services solution in an organization. The course discusses how to develop, deploy, and manage Integration Services packages. **ILT OLL ML**

### (6236) IMPLEMENTING AND MAINTAINING MICROSOFT SQL SERVER 2008 REPORTING SERVICES – 3 DAYS

This course teaches students how to implement a Reporting Services solution in an organization, including how to use the Reporting Services development tools to create reports and how to use the Reporting Services management and administrative tools to manage a Reporting Services solution. **ILT OLL ML**

### (6317) UPGRADING YOUR SQL SERVER 2000 DBA SKILLS TO SQL SERVER 2008 – 5 DAYS

This course provides students with the knowledge and skills to upgrade their SQL Server 2000 skills to SQL Server 2008. **ILT OLL**

## DEVELOPER

### VISUAL STUDIO 2010

### (20480) PROGRAMMING IN HTML5 WITH JAVASCRIPT AND CSS3 - 5 DAYS

Students will gain the knowledge and skills to develop HTML5 web applications using Microsoft Visual Studio 2010. **ILT OLL**

### (10953) PROGRAMMING HTML5 - 3 DAYS

Students will gain the knowledge and skills to develop HTML5 web applications using Microsoft Visual Studio 2010. **ILT OLL**

### (10262) DEVELOPING WINDOWS APPLICATIONS WITH MICROSOFT VISUAL STUDIO 2010 - 5 DAYS

In this course, experienced developers who know the basics of Windows Forms development gain more advanced Windows Client design and development skills. **ILT OLL**

### (10263) DEVELOPING WINDOWS COMMUNICATION FOUNDATION SOLUTIONS WITH MICROSOFT VISUAL STUDIO 2010 3 DAYS

This course provides participants with the knowledge and skills to develop distributed applications using WCF 4 and Microsoft Visual Studio 2010. **ILT OLL ML**

### (10264) DEVELOPING WEB APPLICATIONS WITH MICROSOFT VISUAL STUDIO 2010 5 DAYS

In this course, students will learn to develop advanced ASP.NET MVC and Web Forms applications using .NET Framework 4 tools and technologies. ASP.NET MVC will be introduced and compared with Web Forms so

Microsoft Software Assurance offers a broad range of value-added benefits in one program, combining the latest software with tools and resources to help you deploy, manage, and migrate software. Software Assurance Training Vouchers (SATVs) are just one benefit and can be redeemed at New Horizons for Microsoft Official Curriculum courses. Contact your Account Executive for more information.

that students know when each should/could be used.

**ILT** **OLL** **ML**

**(10265) DEVELOPING DATA ACCESS SOLUTIONS WITH MICROSOFT VISUAL STUDIO 2010 - 5 DAYS**

Experienced developers who know the basics of data access (CRUD) in Windows client and Web application environments will learn to optimize their designs and develop better performing data access code by using the ADO.NET Entity Framework, and ADO.NET.

**ILT** **OLL**

**(10267) INTRODUCTION TO WEB DEVELOPMENT WITH MICROSOFT VISUAL STUDIO 2010 - 5 DAYS**

This course provides knowledge and skills on developing Web applications by using Microsoft Visual Studio 2010.

**ILT** **OLL**

**(10550) PROGRAMMING IN VISUAL BASIC WITH MICROSOFT® VISUAL STUDIO® 2010 – 5 DAYS**

This course teaches students Visual Basic language syntax, program structure, and implementation by using Microsoft Visual Studio 2010 and the Microsoft .NET Framework 4.

**ILT** **OLL** **ML**

**VISUAL STUDIO 2008 / 2005**

**(2310) DEVELOPING WEB APPLICATIONS USING MICROSOFT VISUAL STUDIO 2008 5 DAYS**

This course will teach introductory-level Web developers the fundamentals of Web application development and best practices for Microsoft Web development technologies, including ASP.NET 3.5, ASP.NET AJAX Extensions, LINQ, and Silverlight. This course focuses on using the Microsoft Visual Studio 2008 development environment and the Microsoft .NET Framework 3.5 to create a Web application that delivers dynamic content to a Web site.

**ILT** **OLL** **ML**

**(6214) EFFECTIVE TEAM DEVELOPMENT USING MICROSOFT VISUAL STUDIO TEAM SYSTEM 3 DAYS**

This course provides students with the knowledge and skills to manage source control management, a configurable build process, tools that aid in test driven development, and process workflow all integrated directly into Visual Studio 2008.

**ILT** **OLL**

**(6215) IMPLEMENTING AND ADMINISTERING MICROSOFT VISUAL STUDIO 2008 TEAM FOUNDATION SERVER – 2 DAYS**

This course provides students with the knowledge and skills to implement and administer Microsoft Visual Studio 2008 Team Foundation Server. The course focuses on installation and configuration details, team projects, work items, version control, Team Build, and reporting.

**ILT** **OLL**

**(6460) VISUAL STUDIO 2008: WINDOWS NEW PRESENTATION FOUNDATION – 3 DAYS**

This course provides students with the knowledge and skills to build and configure a Windows Presentation Foundation (WPF) solution.

**ILT** **OLL** **ML**

**(6461) VISUAL STUDIO 2008: WINDOWS COMMUNICATION FOUNDATION – 3 DAYS**

Provides students with the knowledge and skills to build and configure a Windows Communication Foundation (WCF) solution.

**ILT** **OLL** **ML**

**(6462) VISUAL STUDIO 2008: WINDOWS WORKFLOW FOUNDATION – 2 DAYS**

Provides students with the knowledge and skills to build and configure a Windows Workflow Foundation (WF) solution.

**ILT** **OLL** **ML**

**(6463) VISUAL STUDIO 2008: ASP.NET 3.5 2 DAYS**

This course provides students with the knowledge and skills to create a fully functional Web application by using ASP.NET 3.5. This course is intended for application developers who know how to create applications in Visual Studio 2005 or 2008.

**ILT** **OLL** **ML**

**(6464) VISUAL STUDIO 2008: ADO.NET 3.5 2 DAYS**

This course provides students with the knowledge and skills to access and modify data by using ADO.NET 3.5. This course is intended for application developers who know how to create applications in Visual Studio 2005 or 2008.

**ILT** **OLL** **ML**

**MICROSOFT VIRTUALIZATION**

**(10324) IMPLEMENTING AND MANAGING MICROSOFT DESKTOP VIRTUALIZATION 5 DAYS**

The course explains how to configure and manage a MED-V deployment. Then, it describes the procedures for deploying an App-V solution by implementing App-V servers and clients and by sequencing applications.

**ILT** **OLL** **ML**

**.NET PROGRAMMING / APPLICATION DEVELOPMENT**

**(20483) PROGRAMMING IN C# – 5 DAYS**

This course provides students with the knowledge and skills to develop applications in the .NET Framework 3.5 using the C# 3.0 programming language. This course features an overview of all language-related features.

**ILT** **OLL**

**(2311) ADVANCED WEB APPLICATION DEVELOPMENT USING MICROSOFT ASP.NET 5 DAYS**

This course provides students with the knowledge and skills that are needed to successfully design and implement Web applications using Microsoft ASP.NET. This course is intended for existing ASP.NET developers who are writing solutions using Microsoft ASP.

**ILT** **OLL**

**(2349) PROGRAMMING WITH THE MICROSOFT .NET FRAMEWORK (MICROSOFT VISUAL C# .NET) 5 DAYS**

This course helps application developers understand the Microsoft .NET Framework. In addition to offering an overview of the .NET Framework and an introduction to key concepts and terminology, the course provides a series of labs, which introduce and explain .NET Framework features that are used to code, debug, tune, and deploy applications.

**ILT** **OLL**

**(2555) DEVELOPING MICROSOFT .NET APPLICATIONS FOR WINDOWS (VISUAL C# .NET) – 5 DAYS**

Provides students with the skills required to build Microsoft Windows Forms applications by using the Microsoft .NET Framework. This course is a part of the Microsoft Visual C# .NET curriculum and is intended to provide C# programmers with the skills required to create Windows Forms applications by using the .NET Framework. The course will cover the major topics for

Windows client application programming on the .NET Framework.

**ILT** **OLL** **ML**

**(2565) DEVELOPING MICROSOFT .NET APPLICATIONS FOR WINDOWS (VISUAL BASIC .NET) – 5 DAYS**

Provides students with the skills required to build Microsoft Windows Forms applications by using the Microsoft .NET Framework. Topics include Windows Forms, GDI+, simple data access, interoperating with unmanaged code, threading and asynchronous programming issues, simple remoting, Web access, XML Web services consumption, debugging, security, and deployment issues for desktop applications.

**ILT** **OLL** **ML**

**(2609) INTRODUCTION TO C# PROGRAMMING WITH MICROSOFT .NET – 5 DAYS**

This course enables developers to design and develop object-oriented applications for the Web and Microsoft Windows by using Microsoft Visual C# .NET and the Microsoft Visual Studio .NET environment.

**ILT** **OLL**

**(10266) PROGRAMMING WITH C# USING MICROSOFT .NET FRAMEWORK 4 – 5 DAYS**

The course focuses on C# program structure, language syntax, and implementation details with .NET Framework 4.0. This course describes the new enhancements in the C# 4.0 language by using Visual Studio 2010.

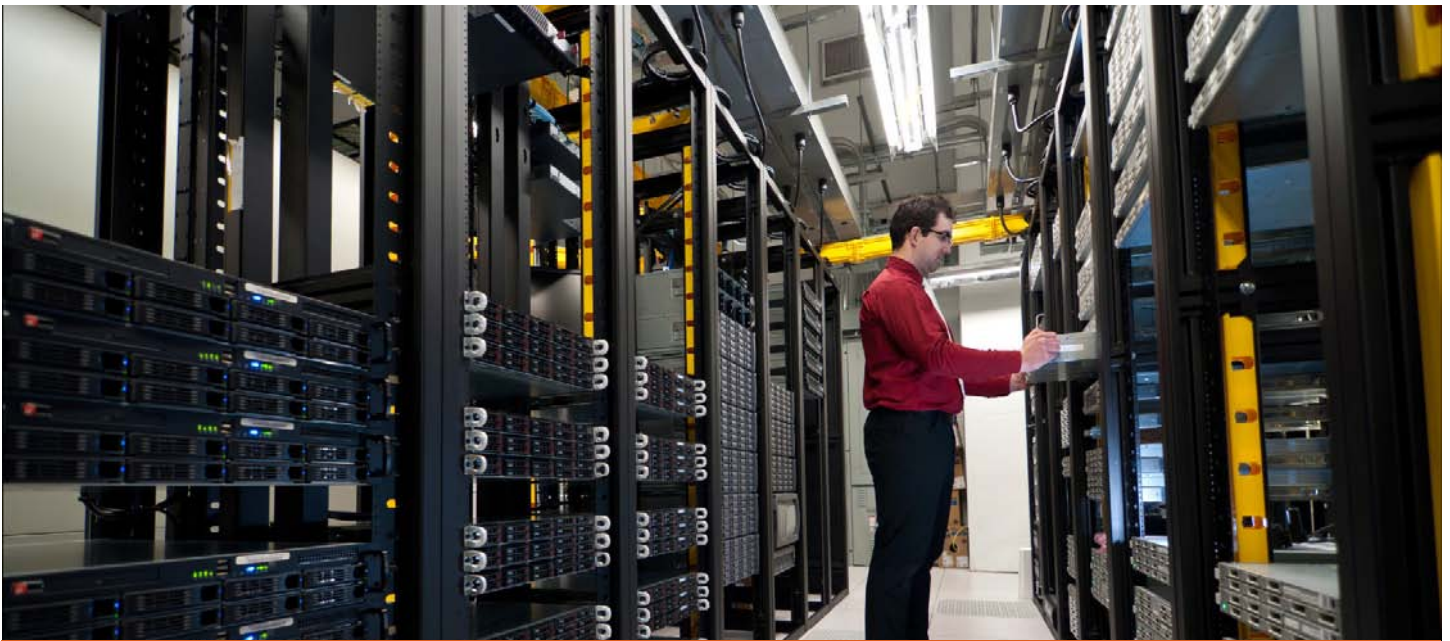
**ILT** **OLL** **ML**

**ILT** Instructor-Led Training

**OLL** OnLine LIVE - Virtual ILT

**ML** Mentored Learning

  
**New Horizons®**  
 Computer Learning Centers  
[www.newhorizons.com](http://www.newhorizons.com)



## Cisco CCNA Certification Training

**CISCO CCNA CERTIFICATION:** The Cisco® CCNA network associate certification validates the ability to install, configure, operate, and troubleshoot medium-size routed and switched networks, including implementation and verification of connections to remote sites in a WAN. This new curriculum includes basic mitigation of security threats, introduction to wireless networking concepts and terminology, and performance-based skills. This new curriculum also includes (but is not limited to) the use of these protocols: IP, Enhanced Interior Gateway Routing Protocol (EIGRP), Serial Line Interface Protocol Frame Relay, Routing Information Protocol Version 2 (RIPv2), VLANs, Ethernet, access control lists (ACLs).

The four CCNA certification paths are:

- CCNA Network Associate Certification
- CCNA - Security Certification
- CCNA - Voice Certification
- CCNA - Wireless Certification

### CISCO CCNA CERTIFICATION AND SPECIALIZATIONS:

#### ICND1 - INTERCONNECTING CISCO NETWORKING DEVICES PART 1

**Course Summary:**

This course focuses on providing the skills and knowledge necessary to install, operate, and troubleshoot a small branch office Enterprise network, including configuring a switch, a router, and connecting to a WAN and implementing network security.

**Certification:**

CCENT upon completion of exam 640-822 ICND1

**Pre-requisites:**

None

#### ICND2 - INTERCONNECTING CISCO NETWORKING DEVICES PART 2

**Course Summary:**

This course focuses on skills and knowledge necessary to install, operate, and troubleshoot a small to medium-size branch office Enterprise network, including configuring several switches and routers, connecting to a WAN and implementing network security.

**Certification:**

CCNA upon completion of exam 640-816 ICND2. Students can also achieve their CCNA certification through successful completion of single exam.

**Pre-requisites:**

ICND1

#### CCNAX - CISCO® INTERCONNECTING CISCO NETWORKING DEVICES: ACCELERATED

**Course Summary**

This course is an accelerated time format alternative to completion of ICND1 and ICND2, focusing on skills and knowledge necessary to install, operate, and troubleshoot a small to medium-size branch office Enterprise network, including configuring several switches and routers, connecting to a WAN and implementing network security.

**Certification**

CCNA upon successful completion of single exam 640-802 CCNA

**Pre-requisites**

None

# Cisco CCNA Certification Training

## CISCO CCNA SECURITY

### IINS - IMPLEMENTING CISCO IOS NETWORK SECURITY

#### **Course Summary**

Students will focus on comprehensive security policies and how they affect networks, and perform tasks to secure the office network using Cisco IOS security features through web-based GUIs and the command-line interface on the Cisco routers and switches. Current holders of the CCNA certification will also be able to earn their CCNA Security certification through attending this course and successful completion of exam 640-553 IINS.

#### **Certification**

CCNA Security upon completion of exam 640-553 IINS

#### **Pre-requisites**

This course is designed for students that have knowledge and skills equivalent to those learned in Interconnecting Cisco Networking Devices Part 1 (ICND1), Interconnecting Cisco Networking Devices Part 2 (ICND2), working knowledge of the Windows Operating System, and knowledge of Cisco IOS networking and concepts.

## CISCO CCNA VOICE

### INTRODUCING CISCO VOICE AND UNIFIED COMMUNICATIONS ADMINISTRATION (ICOMM) V8.0

#### **Course Summary:**

Introducing Cisco Voice and Unified Communications Administration (ICOMM) v8.0 teaches learners how to maintain and operate a Cisco Unified Communications solution that is based on Cisco Unified Communications Manager, Cisco Unified Communications Manager Express, Cisco Unity Connection, and Cisco Unified Presence. This course provides the learners with the knowledge and skills to achieve associate-level competency in Cisco Unified Communications. This course introduces the architecture, components, functionalities, and features of Cisco Unified Communications solutions and describes how daily job tasks, such as system monitoring, moves, adds, and changes are performed on Cisco Unified Communications Manager, Cisco Unified Communications Manager Express, Cisco Unity Connection, and Cisco Unified Presence.

#### **Certification:**

CCNA Voice (upon completion of required exam 640-461 ICOMM v8.0)

#### **Pre-requisites:**

The knowledge and skills that a learner must have before attending this course are as follows:

- Working knowledge of converged voice and data networks
- Basic knowledge of Cisco IOS gateways
- Basic knowledge of Cisco Unified Communications Manager and Cisco Unity Connection

## CISCO CCNA WIRELESS

### IUWNE - IMPLEMENTING CISCO UNIFIED WIRELESS NETWORKING ESSENTIALS

#### **Course Summary:**

Students will receive information and practice activities to prepare them to help design, install, configure, monitor, and conduct basic troubleshooting tasks for a Cisco wireless LAN (WLAN) in small and medium size business (SMB) and enterprise installation. The goal of the IUWNE v1.0 is to provide students with information and practice activities to prepare them to help design, install, configure, monitor and conduct basic troubleshooting tasks of a Cisco WLAN in SMB and Enterprise installations.

#### **Certification:**

CCNA Wireless upon completion of exam 640-722 IUWNE

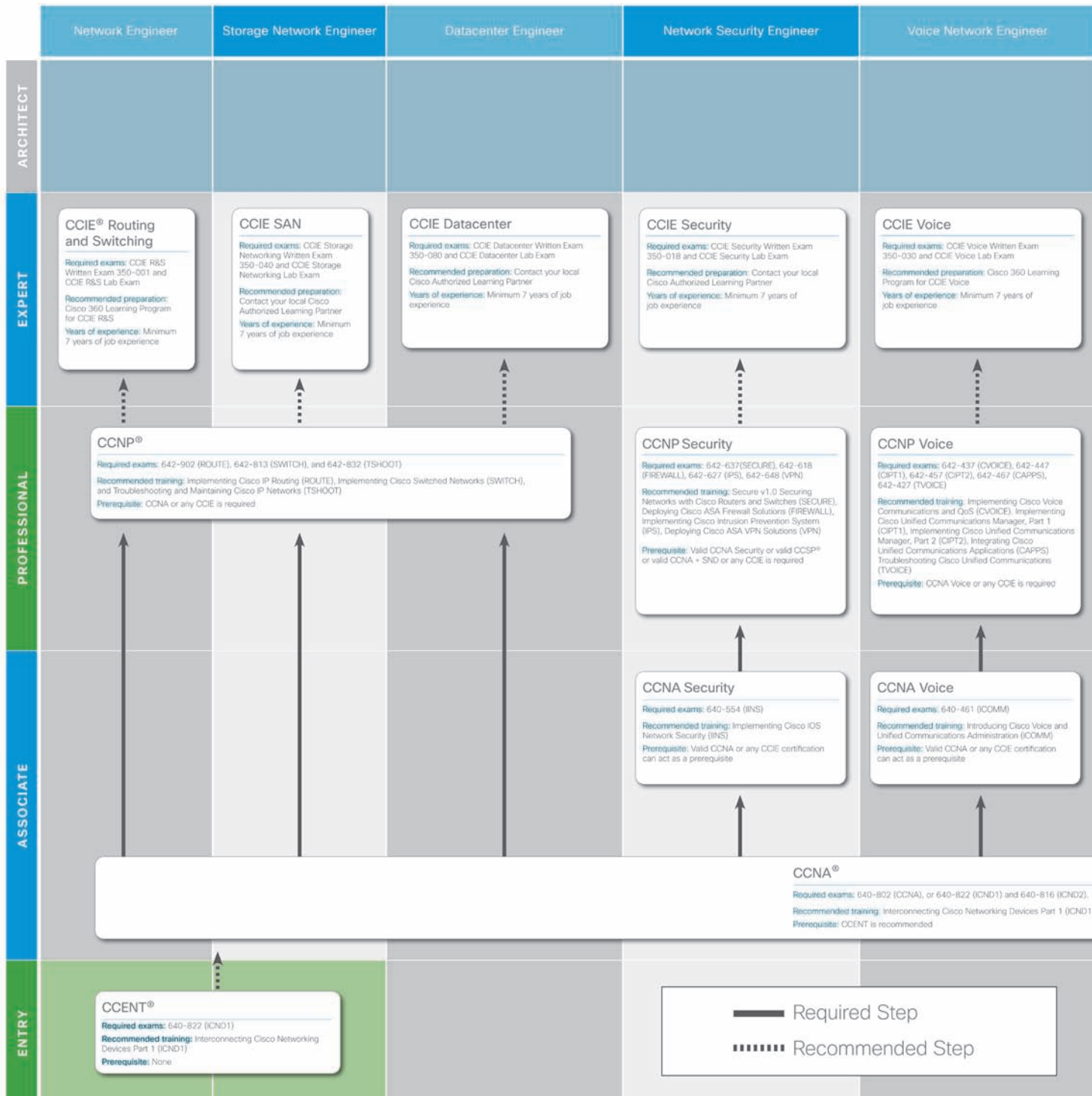
#### **Pre-requisites:**

This course is designed for students that have knowledge and skills equivalent to those learned in Interconnecting Cisco Networking Devices (ICND) Part 1 and Part 2. It is also recommended that students have a basic knowledge of Cisco Lifecycle Services, SONA, Wireless standards (EEE), Wireless regulator environment (FCC, ETSI, and so on) and Wireless certification organization (Wi-Fi Alliance).

# Cisco Certification Training Paths

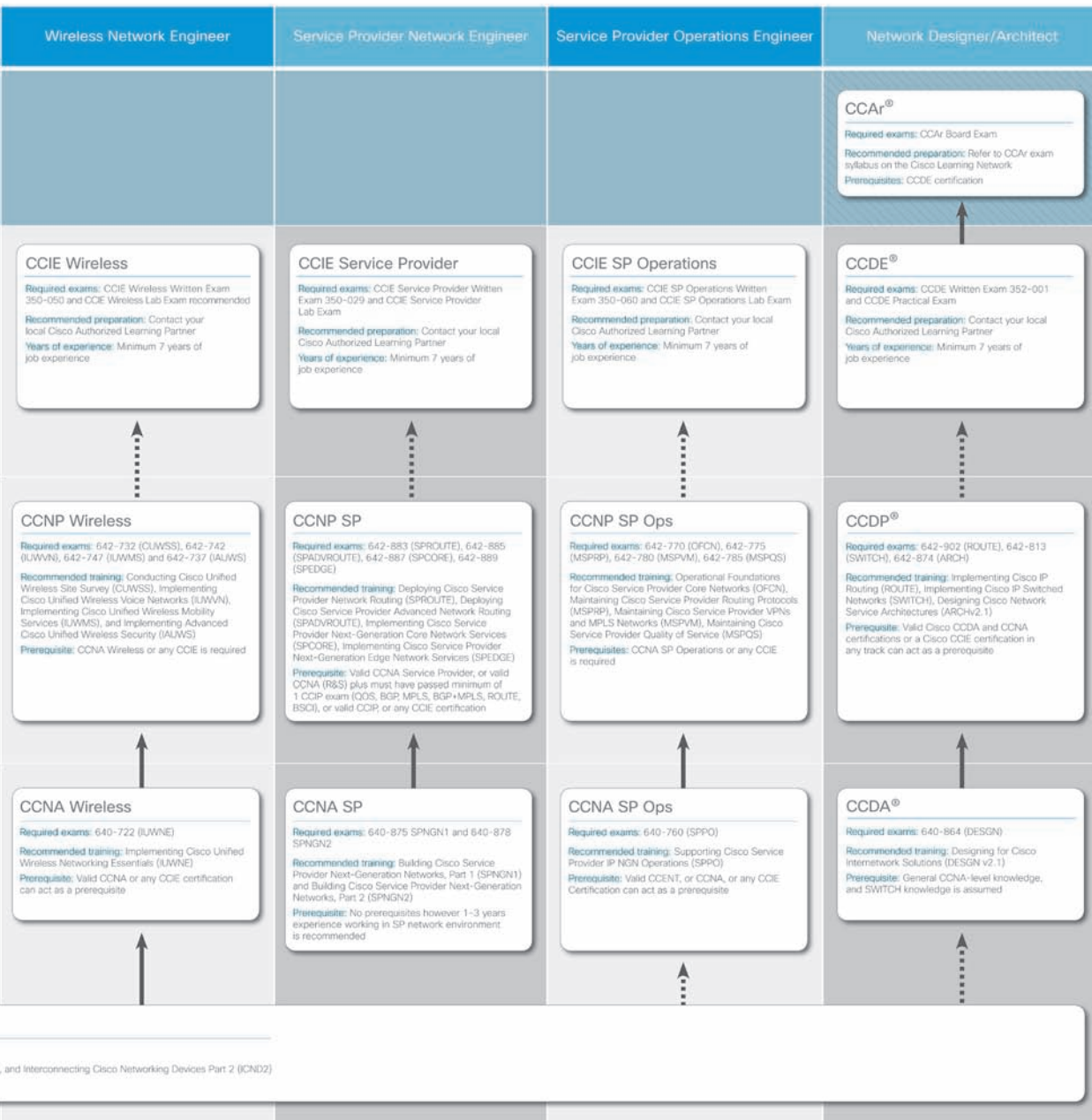
## Set a Path to Success in IT Networking

Cisco Certifications help you launch and advance your IT Networking career. Choose a career path that meets your goals for professional and financial rewards.





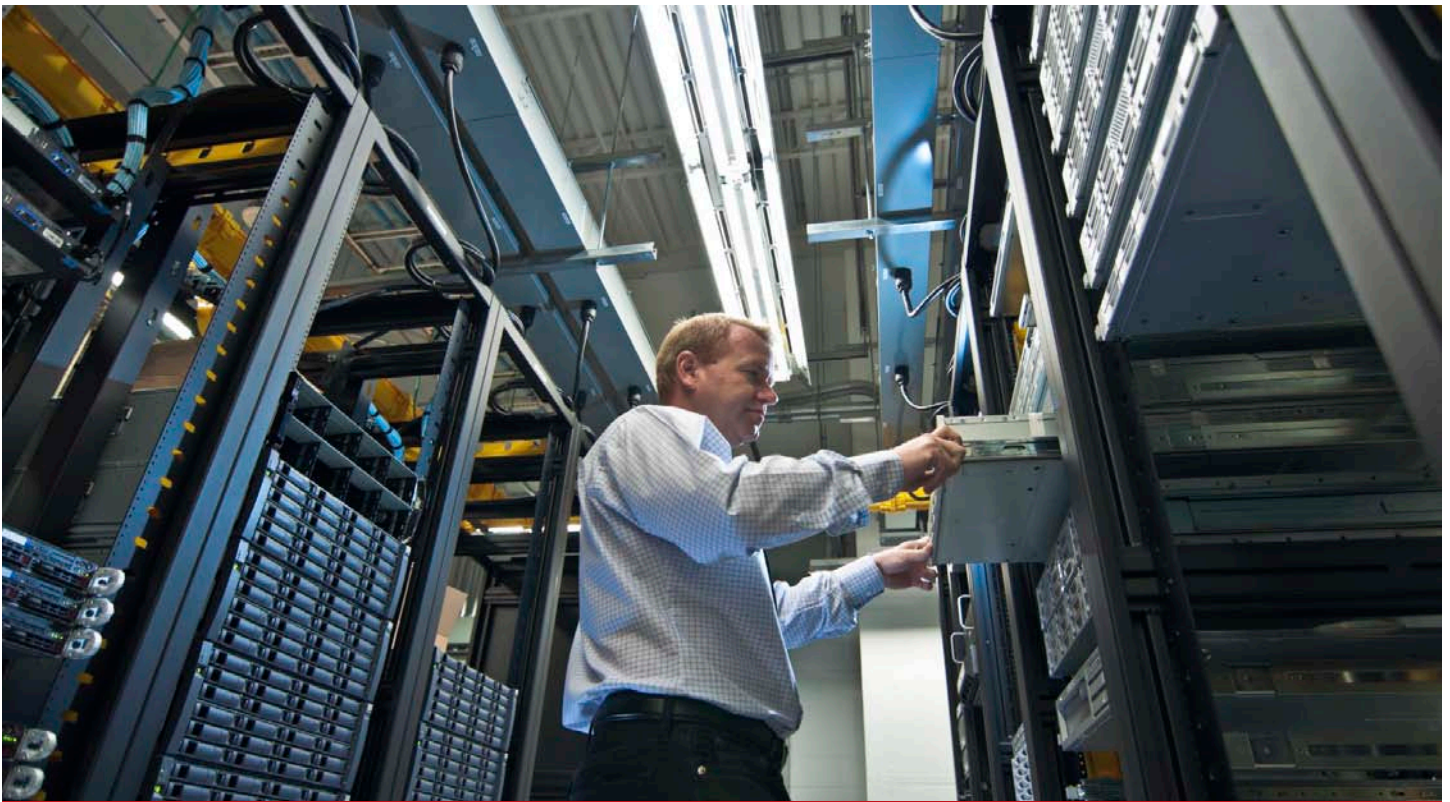
# Cisco Certification Training Paths



and Interconnecting Cisco Networking Devices Part 2 (ICND2)

## Enhance Your Core Knowledge with Specialist Certifications

- [Collaboration](#)
- [Data Center](#)
- [Security](#)
- [Operating System Software](#)
- [Video](#)
- [Virtual Classroom Instruction](#)



## Cisco Technical Training

### CISCO TRAINING

Individuals who get formal training on Cisco technologies demonstrate higher productivity, make fewer errors and possess more of the skills valued by employers and customers than those who simply go through on-the-job training. Whether you are an experienced network professional or just starting a career in technology, Cisco training and certifications open up new IT networking career opportunities.

#### CISCO® ADMINISTERING CISCO® UNIFIED CONTACT CENTER ENTERPRISE V1.0 (AUCCE) 5 DAYS

This course will give students an understanding of the Cisco Unified CCE system, the Intelligent Contact Management (ICM) routing application, and the Cisco Outbound Option. **ILT OLL**

#### CISCO® ADMINISTERING CISCO® UNIFIED COMMUNICATIONS MANAGER (ACUCM) 8.0 3 DAYS

The course teaches the concepts of IP of the system from the perspective of server administration, including its function, features, and configuration. This is an entry-level course that begins with the basic concepts of IP telephony. **ILT OLL**

#### CISCO® ADMINISTERING CISCO® UNITY CONNECTION V8.0 (AUC) – 2 DAYS

This course describes Cisco Unity Connection implementation opportunities and challenges and the tools and skills that are required to manage the environment on an ongoing basis. **ILT**

#### CISCO® ADVANCED SERVICES IMPLEMENTING CISCO® IDENTITY SERVICES ENGINE SECURE SOLUTIONS V1.0 (ISE) – 5 DAYS

Students will implement network services using Cisco Catalyst and Nexus switches, wireless products, ASAs for VPN based posture assessment and policy

enforcement using NAC platforms, solution design, sizing and resiliency and platform troubleshooting. **ILT OLL**

#### CISCO® CONDUCTING CISCO® UNIFIED WIRELESS SITE SURVEY V2.0 (CUWSS) 5 DAYS

Students will gain a firm understanding of how to conduct a site survey and explore WLAN topologies for voice and data as well as Cisco Context-Aware Services. **ILT OLL**

#### CISCO® CONFIGURING BGP ON CISCO® ROUTERS (BGP) – 5 DAYS

This course covers the theory of BGP, configuration of BGP on Cisco IOS routers, detailed troubleshooting information, and hands-on exercises that provide learners with the skills that they need to configure and troubleshoot BGP networks. **ILT OLL**

#### CISCO® DATA CENTER UNIFIED COMPUTING SYSTEM C-SERIES TROUBLESHOOTING V1.0 (DCUCSCTS) – 2 DAYS

The student will learn to troubleshoot Level 2 UCS (Unified Computing System) C-Series issues. **ILT OLL**

#### CISCO® DATA CENTER UNIFIED COMPUTING IMPLEMENTATION V4.0 (DCUCI) – 5 DAYS

Students will learn how to configure and manage Cisco UCS servers with consolidated I/O networking for LAN and SAN connectivity and learn how to virtualize server properties to enable simple and rapid mobility of server images between physical servers. **ILT OLL**

#### CISCO® DEPLOYING CISCO® ASA FIREWALL FEATURES (FIREWALL) – 5 DAYS

Students will gain the knowledge and skills needed to choose, configure, and troubleshoot the majority of perimeter security features of Cisco ASA adaptive security appliance to reduce risk to the IT infrastructure and its applications. **ILT OLL**

#### CISCO® DEPLOYING CISCO® ASA VPN SOLUTIONS (VPN) – 5 DAYS

This course aims at choosing, configuring, and troubleshooting the majority of Cisco ASA adaptive security appliance remote access and site-to-site VPN features to reduce risk to IT infrastructure and its applications. **ILT OLL**

#### CISCO® DEPLOYING CISCO® UNIFIED CONTACT CENTER ENTERPRISE V1.0 (DUCCE) 5 DAYS

This course will give students an understanding of the Cisco Unified CCE deployment capabilities, processes, fault tolerance, installation, and basic troubleshooting. **ILT OLL**

#### CISCO® DEPLOYING CISCO® UNIFIED INTELLIGENCE CENTER V1.0 (DUIC) 3 DAYS

This course is designed to make the task of creating reports from disparate data sources easier on the customer, and present a consistent user interface and a common tool to access the varied data across multiple Cisco product families. **ILT OLL**

#### CISCO® DESIGNING CISCO® DATA CENTER NETWORK INFRASTRUCTURE (DCNID) 5 DAYS

This course enables students to create Data Center network design that optimizes availability, scalability, performance, and security. **ILT OLL**

#### CISCO® DESIGNING CISCO® DATA CENTER UNIFIED FABRIC V3.0 (DCUFD) – 5 DAYS

The course covers architectural components of Cisco Nexus and Cisco Catalyst switching lines, Cisco IOS and Cisco Nexus Operating System (NX-OS) software architecture, as well as management from the network design perspective. **ILT OLL**

#### CISCO® DESIGNING CISCO® RF NETWORKS (DRFN) – 3 DAYS

Students will learn all of the RF design skills that are needed to design municipal, public safety, and campus mesh networks. **ILT**

**NEW HORIZONS HAS BEEN RECOGNIZED** as the Cisco Learning Partner of the Year (U.S. and Canada) for our performance and accomplishments as a Cisco channel partner. As a Cisco Learning Partner Associate, New Horizons employs Certified Cisco Systems Instructors and delivers Cisco authorized and approved content, including product-specific training, technology training and Cisco certification-preparation courses.

CLCs = Cisco Learning Credits are each worth \$100 of Cisco Authorized Training. To redeem Cisco Learning Credits at New Horizons, please contact your Account Executive.

**CISCO® HEALTH INFORMATION NETWORKING 5 DAYS**

Students will gain knowledge and skills that can be applied toward entry-level specialist careers in healthcare networking. Health Information Networking is a blended curriculum with both online and classroom learning. **ILT OLL**

**CISCO® IMPLEMENTING CISCO® CATALYST 4500 SERIES SWITCHES (RSCAT4K) – 3 DAYS**

The course covers the key components and procedures that are needed to install, configure, manage, and troubleshoot the Cisco Catalyst 4500E Series Switches in the network environment. **ILT OLL**

**CISCO® IMPLEMENTING CISCO® MPLS V2.3 (MPLS) – 5 DAYS**

An introduction to MPLS concepts, installation, migration, operation, inspection, and troubleshooting will be covered in this 5-day course. An overview of MPLS, MPLS operation, and MPLS VPN deployment will be taught as well. **ILT OLL**

**CISCO® INTEGRATING CISCO® UNIFIED COMMUNICATIONS APPLICATIONS V8.0 (CAPP5) – 5 DAYS**

Students learn the integration options of Cisco Unified Presence, Cisco Unity Express, and Cisco Unity Connection. It describes voice messaging deployment scenarios, Cisco Unified Presence features, and troubleshooting mechanisms. **ILT OLL**

**CISCO® INTRODUCING CISCO® VOICE AND UNIFIED COMMUNICATIONS ADMINISTRATION V8.0 (ICOMM) – 5 DAYS**

Students learn the architecture, components, functionalities, and features of Cisco Unified Communications solutions and describes how daily job tasks, like system monitoring, moves, adds, and changes are performed on Cisco Unified Communications Manager. **ILT OLL**

**CISCO® INTRODUCTION TO 802.1X OPERATIONS FOR CISCO® SECURITY PROFESSIONALS V1.0 (8021X) – 3 DAYS**

Students will gain the foundational knowledge of IEEE 802.1X protocol; the skills that are needed to configure the Cisco Identity Services Engine (ISE) for 802.1X operation; hands-on experience configuring a network for 802.1X-based network services. **ILT OLL**

**CISCO® IMPLEMENTING CISCO® IOS NETWORK SECURITY (IINS) – 5 DAYS**

Students will focus on comprehensive security policies and how they affect networks, and perform tasks to secure the office network using Cisco IOS security features through web-based GUIs and the command-line interface on the Cisco routers and switches. **ILT OLL**

**CISCO® IMPLEMENTING CISCO® IOS UNIFIED COMMUNICATIONS (IIUC) – 5 DAYS**

Students will be able implement and configure small to medium sized IP Telephony solutions. UC

products covered during labs include the Cisco Unified Communications Manager Express / Cisco Unity Express and the UC500 Smart Business Communications System. **ILT OLL**

**CISCO® IMPLEMENTING CISCO® UNIFIED WIRELESS MOBILITY SERVICES (IUWMS) 5 DAYS**

This course is designed to help learners prepare for the CCNP-Wireless certification, a professional-level certification specializing in the wireless field. The IUWMS course is a component of the CCNP-Wireless curriculum. **ILT OLL**

**CISCO® IMPLEMENTING CISCO® UNIFIED WIRELESS NETWORKING ESSENTIALS (IUWNE) 5 DAYS**

This course provides students with information and practice activities to prepare them to help design, install, configure, monitor and conduct basic troubleshooting tasks of a Cisco WLAN in SMB and Enterprise installations. **ILT OLL**

**CISCO® DESIGNING FOR CISCO® INTERNETWORK SOLUTIONS (DESGN) 5 DAYS**

This course will enable students to gather internetworking requirements, identify solutions, and design the network infrastructure and elements to ensure the basic functionality of the proposed solutions. **ILT OLL**

**CISCO® DESIGNING CISCO® NETWORK SERVICE ARCHITECTURE (ARCH) – 5 DAYS**

Students will learn how to perform the conceptual, intermediate, and detailed design of a network infrastructure that supports desired network solutions over intelligent network services to achieve effective performance, scalability, and availability. **ILT OLL ML**

# Upgrade Your Career With Cisco Training



The Cisco Certified Network Associate (CCNA) certification is the first-level certification offered by Cisco that validates the foundational network knowledge needed to install, operate, and secure mid-sized routed and switched networks.

The CCNA certification path is an excellent start for those who are pursuing a career managing and implementing larger, multilayer switched networks. Whether you are an experienced network professional or considering a career in technology, Cisco Career Certifications open up new IT networking career opportunities in exciting industries, from fashion to film production, law, healthcare, and more!

Visit [www.newhorizons.com](http://www.newhorizons.com) today for more information!

**ILT** Instructor-Led Training

**OLL** OnLine LIVE

**ML** Mentored Learning



[www.newhorizons.com](http://www.newhorizons.com)

# Cisco Technical Training

## CISCO® IMPLEMENTING CISCO® IP ROUTING (ROUTE) – 5 DAYS

This course is designed to provide professionals of medium to large network sites with information on the use of advanced routing in implementing scalability for Cisco routers that are connected to LANs and WANs. [ILT](#) [OLL](#)

## CISCO® IMPLEMENTING CISCO® SWITCHED NETWORKS (SWITCH) – 5 DAYS

This course is designed to help students prepare to plan, configure, and verify the implementation of complex enterprise switching solutions for campus environments using the Cisco Enterprise Campus Architecture. [ILT](#) [OLL](#)

## CISCO® IMPLEMENTING CISCO® INTRUSION PREVENTION SYSTEM (IPS) – 4 DAYS

The course covers important new IPS 6.0 features. The IPS 6.0 course takes a task-oriented approach to teaching the skills to deploy, configure, and administer Cisco IPS sensors. [ILT](#) [OLL](#) [ML](#)

## CISCO® IMPLEMENTING CISCO® UNIFIED COMMUNICATIONS IP TELEPHONY PART 1 V8.0 (CIPT1) – 5 DAYS

Students will perform post-installation tasks, configure Cisco Unified Communications Manager, implement Media Gateway Control Protocol (MGCP) and H.323 gateways, and build dial plans to place on-net and off-net phone calls. [ILT](#) [OLL](#)

## CISCO® IMPLEMENTING CISCO® UNIFIED COMMUNICATIONS IP TELEPHONY PART 2 V8.0 (CIPT2) – 5 DAYS

Students will apply a dial plan for a multisite environment including TEHO, configure survivability for remote sites during WAN failure and implement solutions to reduce bandwidth requirements in the IP WAN. [ILT](#) [OLL](#)

## CISCO® IMPLEMENTING CISCO® QUALITY OF SERVICE (QOS23) – 5 DAYS

This course provides students with knowledge of IP QoS requirements, conceptual models using Differentiated Services (DiffServ), Integrated Services (IntServ) and Best Effort (over provisioning), and the implementation of IP QoS on Cisco IOS switches. [ILT](#) [OLL](#)

## CISCO® IMPLEMENTING ADVANCED CISCO® TELEPRESENCE VIDEO SOLUTIONS PART 1 V1.0 (PAIATVS1) – 5 DAYS

This course is designed to empower the partner with the capacity to install, configure, maintain, and troubleshoot a Cisco TelePresence network so that 80 percent of all field activity is unassisted. [ILT](#) [OLL](#)

## CISCO® IMPLEMENTING ADVANCED CISCO® TELEPRESENCE VIDEO SOLUTIONS PART 2 V1.0 (PAIATVS2) – 5 DAYS

This course prepares students to configure, maintain, and troubleshoot additional features of the Cisco TelePresence Video Communication Server (VCS), including provisioning. [ILT](#) [OLL](#)

## CISCO® IMPLEMENTING ADVANCED CISCO® UNIFIED WIRELESS SECURITY (IAUWS) 2.0 5 DAYS

The student will learn to use appropriate security policies and best practices to secure the wireless network from security threats and to ensure the proper

implementation of security standards and configuration of security components. [ILT](#) [OLL](#)

## CISCO® IMPLEMENTING CISCO® ADVANCED STORAGE NETWORKING SOLUTIONS V4.0 (IASNS) – 5 DAYS

Students will learn advanced topics for Cisco MDS 9000 Series storage networks, including building virtual and heterogeneous SAN fabrics, configuring management and security services, configuring an Internet Small Computer Interface (iSCSI), and more. [ILT](#) [OLL](#)

## CISCO® IMPLEMENTING CISCO® DATA CENTER NETWORK INFRASTRUCTURE 2 (DCNI-2) – 5 DAYS

This course provides the skills and knowledge necessary to install, operate, and troubleshoot a small to medium-size branch office Enterprise network, including configuring switches and routers, connecting to a WAN and implementing network security. [ILT](#) [OLL](#)

## CISCO® IMPLEMENTING CISCO® DATA CENTER UNIFIED FABRIC V4.0 (DCUFI) 5 DAYS

This program designed for systems, field and consulting systems engineers, technical solutions architects, and Cisco integrators and partners who install and implement the Cisco Nexus 7000 and 5000 Switch, and the Cisco Nexus 2000 Fabric Extender. [ILT](#)

## CISCO® IMPLEMENTING CISCO® EXPRESS TELEPRESENCE VIDEO SOLUTIONS V1.0 (PAIETVS) – 2 DAYS

In this course, students will install and operate a basic Cisco TelePresence network. [ILT](#)

## CISCO® IMPLEMENTING CISCO® IOS TELEPHONY AND UNIFIED COMMUNICATIONS EXPRESS V8.5 (IITUCX) – 5 DAYS

Students will learn how to implement Cisco Unified Communications Manager Express and Cisco Unity Express using the CLI and GUI interfaces. [ILT](#) [OLL](#)

## CISCO® IMPLEMENTING CISCO® IOS UNIFIED COMMUNICATIONS (IUUC) – 5 DAYS

Students will be able to implement and configure small to medium sized IP Telephony solutions. UC products covered during labs include the Cisco Unified Communications Manager Express / Cisco Unity Express and the UC500 Smart Business Communications System. [ILT](#) [OLL](#)

## CISCO® IMPLEMENTING CISCO® IOS UNIFIED COMMUNICATIONS PART 2 (IUUC2) – 5 DAYS

Students will focus on comprehensive security policies and how they affect networks, and perform tasks to secure the office network using Cisco IOS security features through web-based GUIs and the command-line interface on the Cisco routers and switches. [ILT](#) [OLL](#)

## CISCO® IMPLEMENTING CISCO® MULTICAST V2.0 (MCAST) – 5 DAYS

This course covers the fundamentals of IP multicasting which include multicast applications, sources, receivers, group management, and IP multicast routing protocols (such as Protocol Independent Multicast [PIM] used within a single administrative domain. [ILT](#) [OLL](#)

## CISCO® IMPLEMENTING CISCO® NAC APPLIANCE (CANAC) – 3 DAYS

The NAC Appliance (Cisco Clean Access) solution allows administrators to authenticate, authorize,

interrogate and remediate users and their machines enforcing policy based access control on the network. [ILT](#) [OLL](#)

## CISCO® IMPLEMENTING CISCO® SECURE ACCESS CONTROL SYSTEM V5.2 (ACS) 3 DAYS

Students will learn how to provide secure access to network resources by using the Cisco Secure Access Control System (ACS) version 5.2, which interoperates with security features in Cisco IOS Software. [ILT](#) [OLL](#)

## CISCO® IMPLEMENTING CISCO® SECURITY MONITORING, ANALYSIS AND RESPONSE SYSTEM (MARS) – 4 DAYS

The Cisco Security Monitoring Analysis and Response System (CS-MARS) is part of the Cisco Security Management Suite which provides security monitoring for network security devices and host application made by Cisco or non-Cisco providers. [ILT](#) [OLL](#)

## CISCO® IMPLEMENTING CISCO® STORAGE NETWORK SOLUTIONS (ICSNS) – 5 DAYS

This course is a five-day training program that is designed for systems and field engineers who implement storage networking solutions with the Cisco MDS 9000 Series Switch platform. [ILT](#) [OLL](#)

## CISCO® IMPLEMENTING CISCO® TELEPRESENCE SOLUTIONS IMMERSIVE V1.1 (ITSI) – 5 DAYS

Implementing Cisco TelePresence Solutions Immersive is a combination of Implementing Cisco TelePresence Solutions (ITS) v1.1 and Physical Installation of Cisco TelePresence Systems (PITS) v1.0. [ILT](#)

## CISCO® IMPLEMENTING CISCO® UNIFIED MESSAGING V8.0 (IUM) – 5 DAYS

The goal of this course is to teach systems engineers how to design and implement Cisco Unity solutions. This class will prepare you to install, upgrade, configure, maintain, and troubleshoot new and existing Cisco Unity installations. [ILT](#) [OLL](#)

## CISCO® IMPLEMENTING CISCO® UNIFIED WEB AND E-MAIL INTERACTION MANAGER ENTERPRISE V2.0 (UEIME) – 5 DAYS

This course is intended for installation engineers, system administrators, database administrators, and others who are responsible for installing and maintaining a Cisco Unified E-Mail and Web Interaction Manager installation. [ILT](#) [OLL](#)

## CISCO® IMPLEMENTING CISCO® UNIFIED WIRELESS VOICE NETWORKS (IUWVN) 5 DAYS

Students will gain a firm understanding of how to integrate voice over wireless LAN (VoWLAN) services into the WLAN and how to implement quality of service (QoS) and high-bandwidth applications into the wireless network. [ILT](#)

## CISCO® IMPLEMENTING CISCO® UNITY CONNECTION V8 (IUC) – 5 DAYS

Describes Cisco Unity Connection installation, implementation, integration, and networking, and presents Cisco Unity Connection with the focused goal of providing engineers and installers with the necessary skills to implement Cisco Unity Connection. [ILT](#)

## CISCO® IMPLEMENTING CISCOWORKS® LMS 4.0 (CWLMS) – 5 DAYS

Students learn CiscoWorks LAN Management Solution (LMS) 4.0 to manage their network. The focus is to find the correct tools within CiscoWorks to document the network inventory, manage device configurations,

control software updates, monitor performance. **ILT OLL**

### **CISCO® IMPLEMENTING THE APPLICATION CONTROL ENGINE SERVICE MODULE V2.0 (ACESM) – 4 DAYS**

This course covers all of the key features of the Cisco ACE Module, including resource virtualization and management, server load balancing (Layers 3 and 4 and Layers 5 through 7), Secure Sockets Layer (SSL) termination and offload, and security features. **ILT OLL**

### **CISCO® INSTALLING CISCO® TELEPRESENCE VIDEO IMMERSIVE SYSTEMS V1.0 (PAITVIS) 2 DAYS**

This course will empower the student to install, configure, operate, and troubleshoot Cisco TelePresence System T3 products. **ILT**

### **CISCO® INTERCONNECTING CISCO® NETWORKING DEVICES PART 1 (ICND1) 5 DAYS**

This course focuses on providing the skills and knowledge necessary to install, operate, and troubleshoot a small branch office Enterprise network, including configuring a switch, a router, and connecting to a WAN and implementing network security. **ILT ML**

### **CISCO® INTERCONNECTING CISCO® NETWORKING DEVICES PART 2 (ICND2) 5 DAYS**

This course focuses on skills and knowledge necessary to install, operate, and troubleshoot a small to medium-size branch office Enterprise network, including configuring several switches and routers, connecting to a WAN and implementing network security. **ILT OLL**

### **CISCO® INTERCONNECTING CISCO® NETWORKING DEVICES ACCELERATED (CCNAX) 5 DAYS**

This course focuses on skills and knowledge necessary to install, operate, and troubleshoot a small to medium-size branch office Enterprise network. This course is an accelerated time format alternative to completion of ICND1 and ICND2. **ILT OLL**

### **CISCO® IPV6 FUNDAMENTALS, DESIGN AND DEPLOYMENT (IP6FD) – 5 DAYS**

This course aims at enabling learners to study and configure Cisco IOS Software IP version 6 (IPv6) features. The course is a technology course covering IPv6 design and implementation topics. **ILT OLL**

### **CISCO® MAINTAINING CISCO® SERVICE PROVIDER QUALITY OF SERVICE V1.0 (MSPQS) 3 DAYS**

This course is designed to provide learners with the knowledge needed to implement, monitor, and troubleshoot QoS policies in the service provider network core and at the edge using Cisco IOS or Cisco IOS XR Software. **ILT**

### **CISCO® MAINTAINING CISCO® SERVICE PROVIDER ROUTING PROTOCOLS V1.0 (MSPRP) – 5 DAYS**

Students will learn knowledge needed to provide support in a service-provider environment using an IGP such as Open Shortest Path First (OSPF) or Intermediate System-to-Intermediate System (IS-IS) and BGP. **ILT**

### **CISCO® MAINTAINING CISCO® SERVICE PROVIDER VPNS AND MPLS NETWORKS V1.0 (MSPVM) – 5 DAYS**

Students will be provided with the knowledge that is needed to provide support in a service provider environment for services that are based on MPLS.

These services include Cisco MPLS Traffic Engineering, Layer 3 and Layer 2 MPLS virtual private networks. **ILT**

### **CISCO® SECURING NETWORKS WITH ASA FUNDAMENTALS (SNAF) – 5 DAYS**

This task-oriented course teaches students the knowledge and skills needed to configure, maintain, and operate Cisco ASA 5500 Series Adaptive Security Appliances. **ILT OLL**

### **CISCO® SECURING NETWORKS WITH CISCO® ROUTERS AND SWITCHES (SNRS) – 5 DAYS**

This course is aimed at providing network specialists with the knowledge and skills needed to secure Cisco IOS router and switch-based networks. **ILT OLL**

### **CISCO® SECURING THE CISCO® ROUTERS AND SWITCHES (SECURE) – 5 DAYS**

This course aims at providing network security engineers with the knowledge and skills needed to secure Cisco IOS Software router- and switch-based networks, and provide security services based on Cisco IOS Software. **ILT OLL**

### **CISCO® SUPPORTING CISCO® SERVICE PROVIDER IP NGN OPERATIONS V1.0 (SSPO) 5 DAYS**

This course is designed to introduce entry-level personnel to the service provider network operations environment, processes-orientation, management tools, and methods. It gives students the opportunity to practice the primary job roles and tasks. **ILT OLL**

### **CISCO® TROUBLESHOOTING CISCO® UNIFIED COMMUNICATIONS SYSTEMS (TUC) 5 DAYS**

This course equips network professionals with the knowledge and skills required to troubleshoot Unified Communications Systems / solutions in Enterprise, Mid-Market, and Commercial deployments. **ILT OLL**

### **CISCO® TROUBLESHOOTING AND MAINTAINING CISCO® IP NETWORKS (TSHOOT) – 5 DAYS**

The course will provide information about troubleshooting and maintaining particular technologies, as well as procedural and organizational aspects of the troubleshooting and maintenance process. **ILT OLL ML**

### **CISCO® TROUBLESHOOTING CISCO® UNIFIED COMMUNICATIONS (TVOICE) – 5 DAYS**

Students learn the knowledge and skills that are required to troubleshoot Cisco Unified Communications systems and solutions in enterprise, midmarket, and commercial deployments in single-site and multisite environments. **ILT OLL**

### **CISCO® UNIFIED COMMUNICATIONS ARCHITECTURE AND DESIGN V8.0 (UCAD) 5 DAYS**

The course teaches students how to identify Cisco Unified Communications components and how to design Cisco Unified Communications call control solutions. These solutions include enterprise network infrastructure, LAN, WAN, and quality of service (QoS). **ILT**

### **CISCO® UNIFIED CONTACT CENTER EXPRESS & UNIFIED IP IVR DEPLOYMENT (UCCXD) 5 DAYS**

This course presented by training partners to systems engineers, Cisco Unified Communications system Partners, and customers who will be charged with deploying the Cisco Unified Contact Center Express (CCX) and Cisco Unified IP Interactive Voice Response. **ILT OLL ML**

### **CISCO® UNIFIED CONTACT CENTER EXPRESS ADVANCED 1.0 (UCCXA) – 4 DAYS**

Student will learn more advanced techniques in scripting and overall CRS functionality and implement features that extend the functionality of UCCX using many of the tools that are already available in the premium version. **ILT OLL**

### **CISCO® UNIFIED WIRELESS NETWORKING V7.2 (CUWN) – 4 DAYS**

In this course, you will learn the basics of how to install, configure, operate, and maintain a wireless network, both as an add-on to an existing wireless LAN (WLAN) and as a new Cisco Unified Wireless Networking solution. **ILT OLL**

### **CISCO® VOICE PORTAL IMPLEMENTATION V8.0 (CVPI) – 5 DAYS**

The purpose of this course is to define the tasks necessary for the Operation, Administration, Maintenance, and Provisioning (OAM&P) of Cisco Unified CVP as it is installed in a Comprehensive Cisco Unified Intelligent Contact Management (ICM) Enterprise environment. **ILT OLL**

### **CISCO® WIDE AREA APPLICATION SERVICES (CWAAS) – 5 DAYS**

Students will design and deploy a solution using Cisco WAAS that improves application performance over the WAN while enabling infrastructure consolidation. **ILT OLL**

### **CISCO® IMPLEMENTING CISCO® VOICE COMMUNICATIONS AND QOS V8.0 (CVOICE) 5 DAYS**

This course provides an understanding of converged voice and data networks and the challenges faced by the various network technologies. Students receive knowledge and skills required to integrate gateways and gatekeepers into an enterprise VoIP network. **ILT OLL**

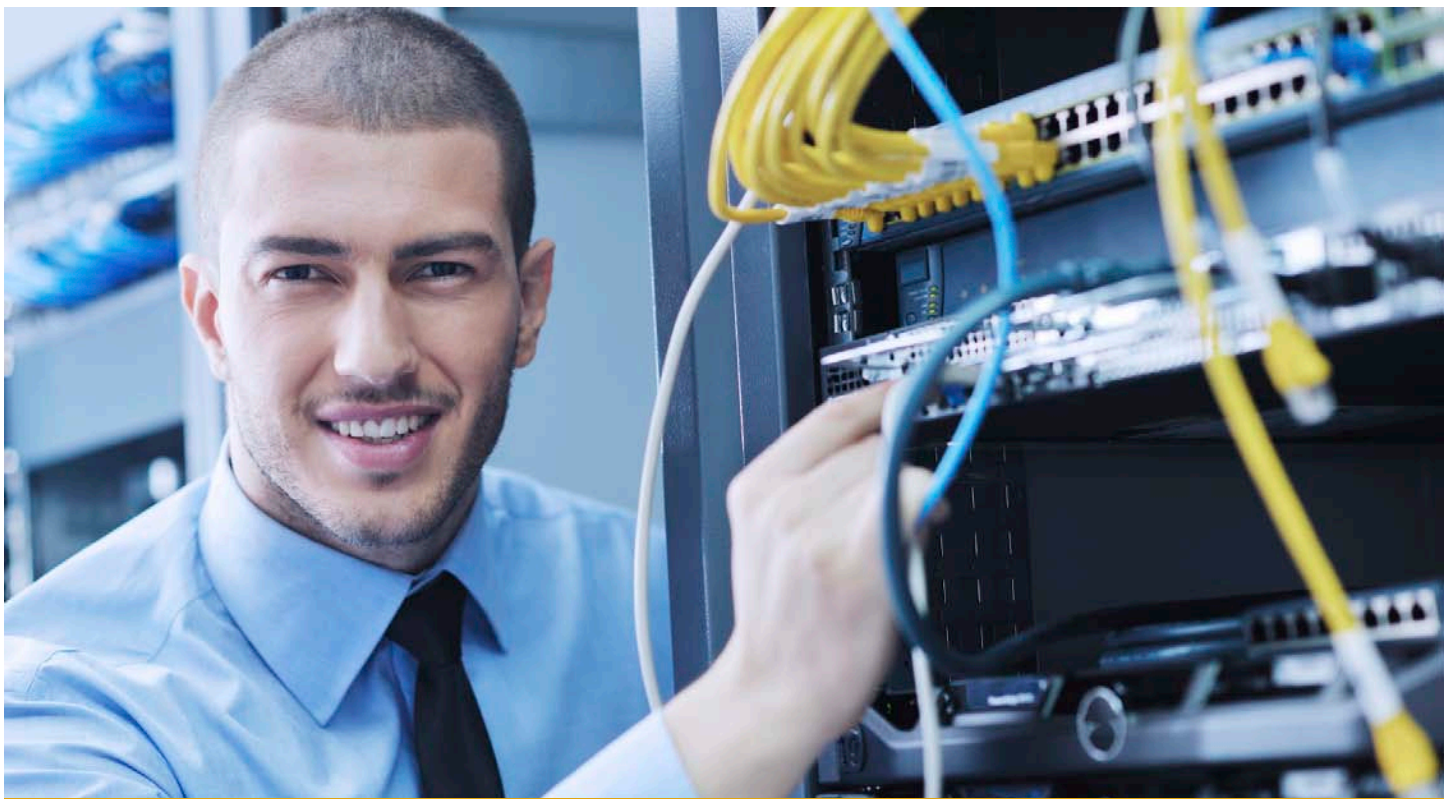
**ILT** Instructor-Led Training

**OLL** OnLine LIVE - Virtual ILT

**ML** Mentored Learning

  
**New Horizons®**  
Computer Learning Centers

[www.newhorizons.com](http://www.newhorizons.com)



## Technical Training

### COMPTIA

#### A+ CERTIFICATION (2012 OBJECTIVES) 5 DAYS

In this course, you will acquire the essential skills and information you will need to install, upgrade, repair, configure, troubleshoot, optimize, and perform preventative maintenance of basic personal computer hardware and operating systems. [ILT](#) [OLL](#) [ML](#)

#### COMPTIA ADVANCED SECURITY PRACTITIONER (CASP) – 5 DAYS

In this course, students will examine advanced security concepts, principles, and implementations that pertain to enterprise level security. [ILT](#) [OLL](#)

#### COMPTIA NETWORK+ CERTIFICATION (2011 OBJECTIVES) – 5 DAYS

The student will describe the major networking technologies, systems, skills, and tools in use in modern networks. Taking this course will help the student prepare for the N10-005 exam and certification. [ILT](#) [OLL](#) [ML](#)

#### COMPTIA SECURITY+ CERTIFICATION (2011 OBJECTIVES) – 5 DAYS

The CompTIA® Security+® (2011 Objectives) course is designed to help you prepare for the SY0-301 exam. Students will implement and monitor security on networks, applications, and operating systems, and respond to security breaches. [ILT](#) [OLL](#)

#### COMPTIA CONTINUING EDUCATION: SECURITY 2 DAYS

The student will implement and monitor security on networks, applications, and operating systems, and respond to security breaches. [ILT](#) [OLL](#)

#### COMPTIA STORAGE+ CERTIFICATION – 5 DAYS

Students will gain knowledge of storage concepts, components, and the ability to work on a storage networking environment. [ILT](#) [OLL](#)

#### LINUX ADVANCED SYSTEM AND NETWORK ADMINISTRATION - LPI CERTIFICATION 5 DAYS

In this course, students implement and manage web, file, and security features, troubleshoot system and network problems. The course includes skills needed to provide advanced features and services to users of the Linux network. [ILT](#)

#### LINUX SYSTEM ADMINISTRATION - LPI CERTIFICATION – 5 DAYS

In this course, students with basic knowledge of computer hardware and system administration will focus on Linux system administration and prepare to take the LPI 101 and 102 exams. Students will install, configure, and manage Linux systems. [ILT](#)

#### COMPTIA LINUX+ CERTIFICATION – 5 DAYS

Students will acquire the skills needed to install and support one or more distributions of the Linux operating system and learn information and skills that will be helpful as you prepare for CompTIA® Linux+™ Powered by LPI exams. [ILT](#)

### CITRIX

#### CVA-500-2I ARCHITECTING A CITRIX VIRTUALIZATION SOLUTION – 5 DAYS

This course will provide students with the key considerations for managing the project, assessing environment readiness and risks and designing the appropriate solution according to Citrix best practices. [ILT](#) [OLL](#)

#### (CNS-203-3) BASIC ADMINISTRATION FOR CITRIX NETSCALER 9.2 – 3 DAYS

Learners gain an understanding of NetScaler features such as load balancing, SSL offload, classic and advanced expressions, rate limiting and AppExpert templates. [OLL](#)

#### CVE-400-2I ENGINEERING A CITRIX VIRTUALIZATION SOLUTION – 5 DAYS

This course teaches Citrix engineers how to plan for and perform the tasks necessary to successfully

integrate the component technologies that make up a Citrix virtualization solution in a Windows Server 2008 environment. [ILT](#) [OLL](#)

#### (CVE-401) ENGINEERING A CITRIX VIRTUALIZATION SOLUTION – 5 DAYS

This course teaches Citrix engineers how to plan for and perform the tasks necessary to successfully integrate the component technologies that make up a Citrix virtualization solution in a Windows Server 2008 environment. [ILT](#) [OLL](#) [ML](#)

#### (CXA-300-1I) ADVANCED ADMINISTRATION FOR CITRIX XENAPP 5.0 FOR WINDOWS SERVER 2008 – 5 DAYS

Students are introduced to the tools used to monitor the XenApp farm, record farm activity and generate reports. In addition, students take the skills needed to maintain data and server integrity and to scale, optimize and troubleshoot the XenApp farm. [ILT](#) [OLL](#) [ML](#)

#### CNS-203-2I BASIC ADMINISTRATION FOR CITRIX XENAPP 9.3 – 5 DAYS

Learners gain an understanding of NetScaler features such as load balancing, SSL offload, classic and advanced expressions, rate limiting and AppExpert templates. Learners are guided through administrator tasks preparing them to manage Citrix NetScaler 9. [ILT](#) [OLL](#)

#### CBR-201-1 CITRIX BRANCH REPEATER 6.0 ADMINISTRATION – 2 DAYS

In this course, learners will be introduced to Citrix Branch Repeater 6.0 overview and gain the knowledge needed to execute this service delivery optimization and control solution for branch and mobile users. [ILT](#) [OLL](#)

#### CAG-200-1I IMPLEMENTING CITRIX ACCESS GATEWAY 9.0 ENTERPRISE EDITION – 2 DAYS

This course covers information administrators and other IT professionals need to successfully deploy and manage Access Gateway 9.0 Enterprise Edition and the Access Gateway Plug-ins. [ILT](#) [OLL](#)

**NEW HORIZONS IS PROUD** to offer IT professionals the most comprehensive learning experience. Through our partnerships with industry leaders such as CompTIA, Novell, Citrix, EC-Council, Business Objects and EXIN, we deliver training on the IT products and practices that drive business success.

**CXA-201-1I IMPLEMENTING CITRIX XENAPP 5.0 FOR WINDOWS SERVER 2008 – 5 DAYS**

This course provides the foundation necessary to effectively deploy and administer Citrix XenApp and its components, including Web Interface, Application Streaming, Load Manager, Installation Manager, and Secure Gateway. **ILT OLL ML**

**CXA-201-2L IMPLEMENTING CITRIX XENAPP 5.0 FOR WINDOWS SERVER 2008 – 5 DAYS**

This course provides the foundation necessary to effectively implement, deploy and administer Citrix XenApp and its components, including Web Interface, Application Streaming, Load Manager, Installation Manager, and Secure Gateway. **ILT OLL**

**(CXA-202-1I) IMPLEMENTING CITRIX XENAPP 5.0 FOR WINDOWS SERVER 2008 SKILLS UPDATE – 3 DAYS**

This course provides the foundation necessary to effectively implement, deploy and administer Citrix XenApp 5.0 and its components, including Web Interface, application streaming and Secure Gateway. **ILT OLL ML**

**CXA-204-2I BASIC ADMINISTRATION FOR CITRIX XENAPP 6 – 5 DAYS**

Students will receive training for installing Citrix XenApp 6 for Windows Server 2008 R2 and the associated Citrix plug-ins, administrative consoles and tools to configure resources, policies, server farm settings, printers, and virtualized applications. **ILT OLL**

**CXA-205-1I BASIC ADMINISTRATION FOR CITRIX XENAPP 6: SKILLS UPDATE – 3 DAYS**

In this course, students will be introduced to the new features in XenApp 6. students will also learn what's new in XenApp 6, review new Services, Citrix Licensing updates, Console changes, policies, HDX and Application Streaming enhancements. **ILT**

**CXA-206-1 CITRIX XENAPP 6.5 ADMINISTRATION – 5 DAYS**

Students will learn to install and configure Citrix XenApp 6.5 for Windows Server 2008 R2, Citrix Receiver and plug-ins, and administrative consoles and tools to configure resources, policies, server and farm settings, printers, virtualized applications. **ILT OLL**

**CXA-301-1 CITRIX XENAPP 6.5 ADVANCED ADMINISTRATION – 5 DAYS**

This course provides learners with the skills necessary to monitor, maintain, optimize and troubleshoot Citrix XenApp 6.5 environments running on Windows Server 2008 R2 software. **ILT OLL**

**CXD-202-1 CITRIX XENDESKTOP 5 ADMINISTRATION – 5 DAYS**

Students will learn how to select a desktop delivery model for each user group based on their needs, build proof-of-concept and production XenDesktop environments, assign virtual desktops to users and customize the user experience through policies. **ILT OLL**

**(CXD-200-1I) IMPLEMENTING CITRIX XENDESKTOP 3 – 2 DAYS**

In this Citrix XenDesktop 3 training course, students will learn to install, configure and manage Citrix XenDesktop 3. **ILT OLL ML**

**(CXS-200-1I) IMPLEMENTING CITRIX XENSERVER ENTERPRISE EDITION 5.0 2 DAYS**

This course prepares learners to deploy and manage XenServer Enterprise Edition 5.0 and XenCenter. Through hands-on labs, learners will gain experience in installing and configuring a virtualization server and connecting to the server with XenCenter; creating virtual machines and managing virtual machine life-cycle operations; and creating a XenServer resource pool and connecting to remote storage. **ILT OLL ML**

**CXS-202-2 CITRIX XENSERVER 5.6 ADMINISTRATION – 5 DAYS**

Students will learn skills necessary to configure and administer XenServer 5.6, XenCenter, and Provisioning Services 5.6. **ILT OLL**

**CXS-203-1 CITRIX XENSERVER 6.0 ADMINISTRATION – 5 DAYS**

Students will learn to effectively install, configure, administer, and troubleshoot XenServer 6.0. Students will also learn how to configure a Provisioning Services 6.0 host, and create and manage vDisks in a XenServer environment. **ILT OLL**

**(CXA-100-1I) PROVIDING HELP DESK SUPPORT FOR CITRIX XENAPP – 2 DAYS**

Students will learn to identify whether more complex issues are related to the XenApp product, the network or directory services. Help desk professionals can transfer cases to the appropriate person. **ILT OLL ML**

**INFORMATION SECURITY**

**CERTIFIED ETHICAL HACKER (CEH) – 5 DAYS**

This class will immerse the student into an interactive environment where they will be shown how to scan, test, hack and secure their own systems. Students then learn how intruders escalate privileges and what steps can be taken to secure a system. **ILT OLL ML**

**COMPUTER HACKING FORENSICS INVESTIGATOR (CHF) – 5 DAYS**

This course will provide participants the necessary skills to identify an intruder's footprints and to properly gather the necessary evidence to prosecute in the court of law. **ILT OLL ML**

**SECURITY+ CERTIFICATION (2008 OBJECTIVES) 5 DAYS**

In this course, students will build on knowledge and professional experience with computer hardware, operating systems, and networks as they acquire the specific skills required to implement basic security services on any type of computer network. **ILT OLL ML**

**CERTIFIED INFORMATION SYSTEMS AUDITOR (CISA) – 5 DAYS**

In this course students will perform evaluations of organizational policies, procedures, and processes to ensure that an organization's information systems align with overall business goals and objectives. **ILT OLL**

**CERTIFIED SOFTWARE QUALITY ENGINEER (CSQE) – 5 DAYS**

This course teaches to ASQ's objectives to certify understanding of software quality development and implementation, software inspection, testing, verification and validation. **ILT OLL**

**CERTIFIED SOFTWARE TESTER (CSTE) – 5 DAYS**

In this course, students will describe the various testing principles and concepts with a special focus on the Certified Software Tester (CSTE) examination objectives. **ILT OLL**

**ITIL**

**ITIL EXPERT MANAGING ACROSS THE LIFECYCLE (2011 EDITION) – 4 DAYS**

This course offers candidates the ability to achieve the ITIL Expert certification upon passing the ITIL Managing Across the Lifecycle exam as well as providing valuable knowledge that can be implemented in the workplace. **ILT**

**ITIL INTERMEDIATE CONTINUAL SERVICE IMPROVEMENT 2011 EDITION – 4 DAYS**

CSI (Continual Service Improvement) course is part of the ITIL® v3 Intermediate Lifecycle certification stream. The course prepares students to take the ITIL® v3 Continual Service Improvement Intermediate exam. **ILT OLL**

**ITIL INTERMEDIATE RELEASE CONTROL & VALIDATION 2011 EDITION – 5 DAYS**

The student will learn the RCV (Release, Control & Validation) part of the ITIL® v3 Intermediate Capability certification stream. The course prepares candidates to take the ITIL® v3 Release, Control & Validation Intermediate exam. **ILT OLL**

**ITIL INTERMEDIATE SERVICE DESIGN 2011 EDITION – 4 DAYS**

The student will learn the SD (Service Design) part of the ITIL® v3 Intermediate Lifecycle certification stream. The course prepares candidates to take the ITIL® v3 Service Design Intermediate exam as well as proving valuable workplace knowledge. **ILT OLL**

**ITIL INTERMEDIATE SERVICE OFFERINGS AND AGREEMENTS 2011 EDITION – 5 DAYS**

The Service Offerings & Agreements course is part of the ITIL® v3 Intermediate Capability certification stream. The course prepares candidates to take the ITIL® v3 Service Offerings & Agreements Intermediate exam. **ILT OLL**

- ILT** Instructor-Led Training
- OLL** OnLine LIVE - Virtual ILT
- ML** Mentored Learning



## Technical Training

### ITIL INTERMEDIATE SERVICE OPERATION 2011 EDITION – 4 DAYS

SO (Service Operation) course is part of the ITIL® v3 Intermediate Lifecycle certification stream. The course prepares students to take the ITIL® v3 Service Operation Intermediate exam as well as proving valuable workplace knowledge. **ILT OLL**

### ITIL V3 AWARENESS (IV3-101-2.10) – 1 DAYS

ITIL® v3 Awareness workshop provides a high level overview of IT Service Management and IT Service Management Best Practices based on ITIL version 3 (v3). Participants will learn principles, core elements and benefits of the Service Lifecycle approach. **ILT OLL**

## LINUX

### LINUX ADVANCED SYSTEM AND NETWORK ADMINISTRATION - LPI CERTIFICATION 5 DAYS

In this course, students implement and manage web, file, and security features, troubleshoot system and network problems. The course includes skills needed to provide advanced features and services to users of the Linux network. **ILT**

### LINUX SYSTEM ADMINISTRATION - LPI CERTIFICATION – 5 DAYS

In this course, students with basic knowledge of computer hardware and system administration will focus on Linux system administration and prepare to take the LPI 101 and 102 exams. Students will install, configure, and manage Linux systems. **ILT**

### COMPTIA LINUX+ CERTIFICATION – 5 DAYS

Students will acquire the skills needed to install and support one or more distributions of the Linux operating system and learn information and skills that will be helpful as you prepare for CompTIA® Linux+™ Powered by LPI exams. **ILT**

## JAVA

### INTRODUCTION TO PROGRAMMING USING JAVA SE 7 – 1 DAYS

Students will learn the basic concepts of programming using Java as the tool for learning. **ILT OLL**

### JAVA FUNDAMENTALS (JAVA SE 7) – 5 DAYS

Students will create basic applications using the Java SE 7 programming language and describe object-oriented concepts, Unified Modeling Language (UML) representation of object-oriented programming (OOP) concepts, and Java platforms and technologies. **ILT OLL**

### JAVA PROGRAMMING (JAVA SE 7) – 5 DAYS

Students will work with advanced features of Java. **ILT OLL**

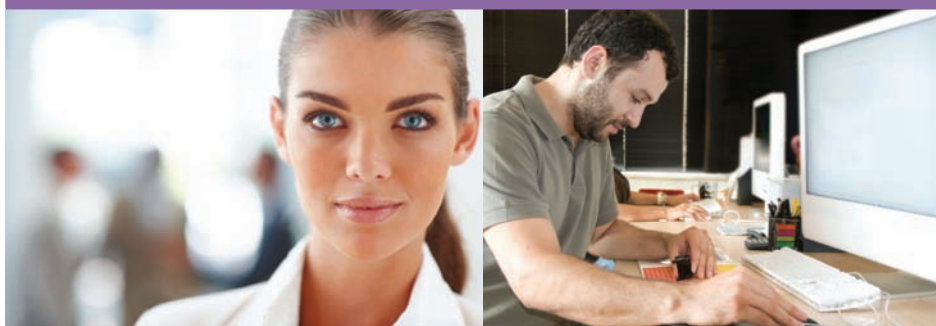
### AJAX TRAINING USING JSP – 3 DAYS

Students learn to make calls to the server with JavaScript and to manipulate XML content returned from the server. **ILT OLL**

### JAVASCRIPT ADVANCED PROGRAMMING AND AJAX – 2 DAYS

In this course, students will use the advanced techniques in JavaScript programming and Ajax to make your web pages highly functional. **ILT**

# Discover your Creative Side With Adobe Training



Whether you want to improve your skills, projects or resume, Adobe training and certification programs and resources can help you achieve your goals. Our courses feature hands-on tasks and real-world scenarios—in just a matter of days, you'll be more productive and embracing new technology standards

### Taking advantage of Adobe Creative Suite offerings, you will:

- Discover new tools and features to turn your ideas into amazing, print, web, video, interactive and mobile pieces
- Expand your design skills across more media with easy export of rich interactive documents
- Design and develop engaging interactive websites







# Private Group Classes

New Horizons offers private group classes that provide flexible, customizable training solutions to fit your organization's unique needs. Private training allows organizations to train an entire team or department with one unified learning experience, ensuring that everyone obtains the same knowledge and skills. Courses can be delivered "off the shelf", slightly modified or completely customized to meet your organizations learning initiatives. Private training can be delivered in any of our 300 training centers worldwide, on-site at your offices, or at a location of your choice.

New Horizons private group classes provide:

- Customized solutions to fit your training objectives
- Flexible scheduling to minimize downtime and maintain productivity
- Unified learning experience for all employees
- Real-world, objective-specific skills to ensure your project's success
- Reduced training costs

Contact your Account Executive to learn more about our private group class options.



## VMware Training

### **VMWARE® VIEW: INSTALL, CONFIGURE, MANAGE V5.1— 4 DAYS**

This hands-on training course builds your skills in the VMware® View™ suite of products: VMware View Manager, View Composer, and VMware ThinApp®. This course is based on the View 5.1 and ThinApp 4.7 releases. [OLL](#)

### **VMWARE® VCENTER SITE RECOVERY MANAGER: INSTALL, CONFIGURE, MANAGE V5.0 — 2 DAYS**

This course equips experienced VMware vSphere® administrators with the knowledge to install, configure, and manage VMware vCenter Site Recovery Manager™ 5.0. This course also equips vSphere administrators with the knowledge to assist in disaster planning. [OLL](#)

### **VMWARE® VSPHERE INSTALL, CONFIGURE, MANAGE V5.0 — 5 DAYS**

This course explores installation, configuration, and management of VMware vSphere®, which consists of VMware ESXi™ and VMware vCenter Server™. The course is based on ESXi 5.0 and vCenter Server 5.0. [ILT](#) [OLL](#)

### **VMWARE® VSPHERE: WHATS NEW? V5.0 — 2 DAYS**

This course explores features in VMware vCenter Server 5.0 & VMware ESXi 5.0. Topics include VMware vSphere 5 installation and how to upgrade from vSphere 4.x to vSphere 5.0. vSphere 5.0 is the first version of vSphere to include only the ESXi hypervisor. [ILT](#) [OLL](#)

### **VMWARE® VIEW: DESIGN BEST PRACTICES V5.0 — 2 DAYS**

This course presents a methodology for designing a VMware View solution for the VMware vSphere infrastructure. The design methodology includes recommendations for the type of information and data that must be gathered and analyzed to make design decisions. [OLL](#)

### **VMWARE® VSPHERE: FAST TRACK V5.0 5 DAYS**

Students will learn to install, configure, and manage VMware vSphere® 5, gaining advanced tasks and skills for configuring a highly available and scalable virtual infrastructure. Included is a prepaid voucher for the VMware Certified Professional 5 exam. [OLL](#)

## Upgrade Your Career With VCP Training

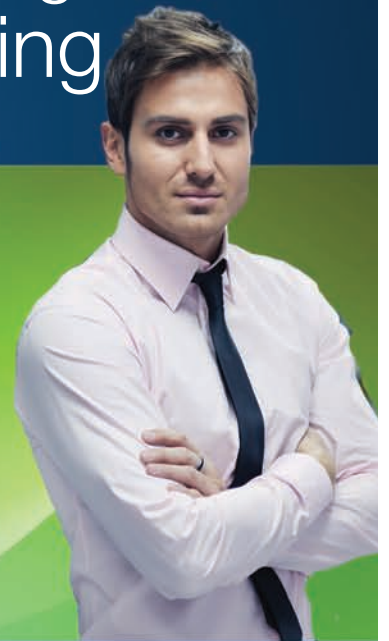
The VMware Certified Professional on vSphere 5 certification is the first-level certification offered by VMware that validates VMware world-class certifications designed to validate and recognize IT professionals with the technical capabilities and real-world experience needed to effectively install, manage, deploy and support VMware products and solutions.

Achieving VCP5 confirms that you have the education needed to successfully install, deploy, scale and manage VMware vSphere 5 environments as well as the skills obtained by a minimum of six months experience with VMware infrastructure technologies. Whether you are an experienced network professional or considering a career in technology, VMware Career Certifications open up new IT networking career opportunities in exciting industries, from fashion to film production, law, healthcare, and more!

Visit [www.newhorizons.com](http://www.newhorizons.com) today for more information!

# Expand Your Virtualization Knowledge With VMware Training

## YOUR SOURCE FOR AUTHORIZED VMWARE TRAINING



New Horizons delivers VMware world-class certifications designed to validate and recognize IT professionals with the technical capabilities and real-world experience needed to effectively install, manage, deploy and support VMware products and solutions.

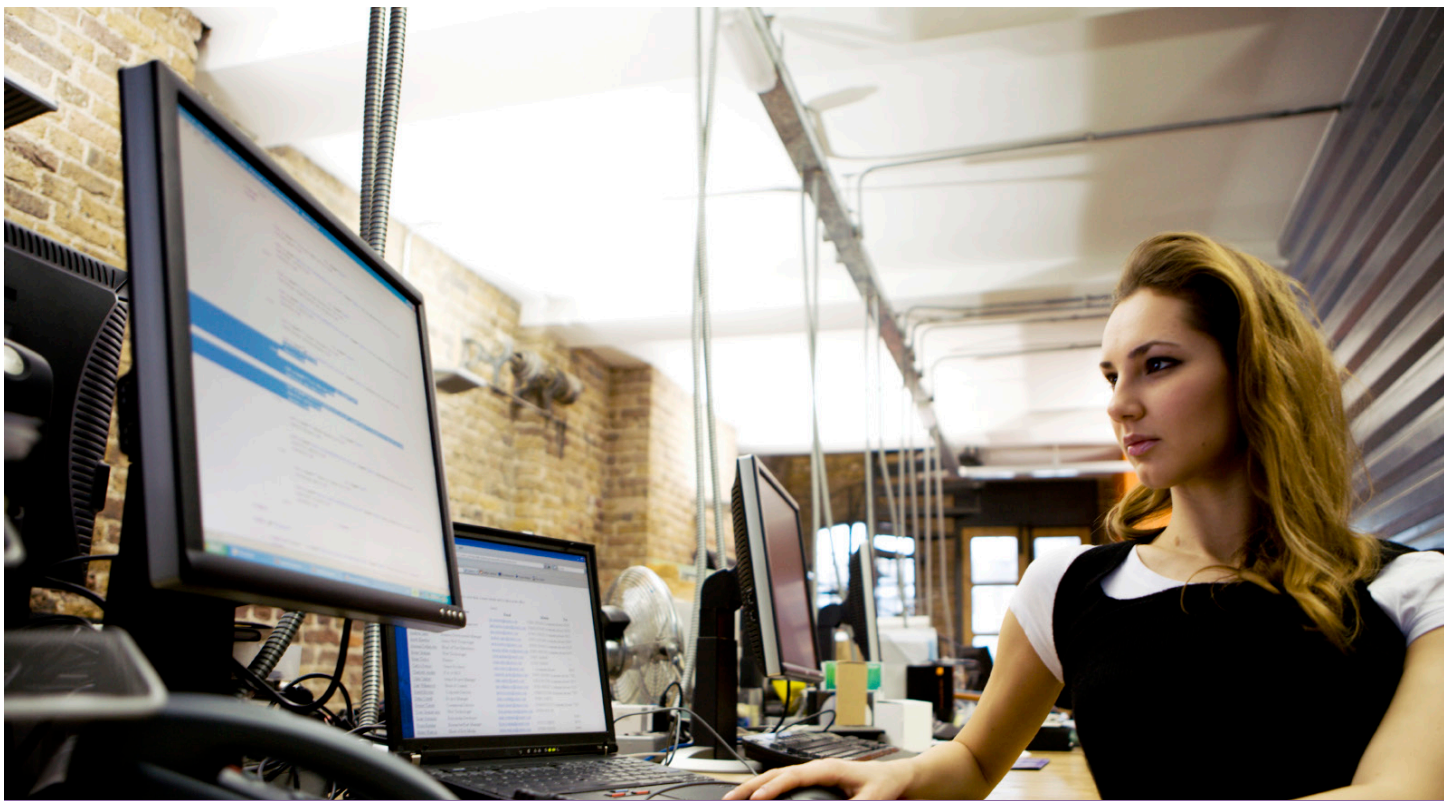
Whether you want to improve your skills, projects or resume, VMware training and certification programs and resources can help you achieve your goals. Our courses feature real-world scenarios—in just a matter of days, you'll be more productive and embracing new technology standards

### **VMware Certifications Prepare Staff To:**

- Improve company infrastructures security
- Improvement in the event of disaster recovery
- Reduce network restrictions based on geography
- Secure their company's digital assets

### **VCP Certification Enables Your Organization To:**

- Optimize and manage virtualized environments
- Reduce costs, become more agile, and improve application service levels
- Enable large-scale virtualization that drives growth, increases efficiency and mitigates risk



## PC Desktop Training



**THE MICROSOFT OFFICE SPECIALIST CERTIFICATION PROGRAM** is the credential required by academia and business, recognized globally as the premier credential chosen by individuals seeking to validate their knowledge, skills and abilities relating to the Microsoft Office systems. In academia, MOS promotes success in the classroom for students and instructors, and prepares students for an increasingly competitive workforce for business, MOS maximizes office productivity and efficiency for the organization and increases job satisfaction and heightens career achievement among employees. In workforce development, MOS prepares and places job candidates, ensuring they possess the skills employers require.

### ACCESS 2010 - PART 1 – 2 DAYS

In this course, students will create and modify new databases and their various objects. **ILT OLL ML**

### ACCESS 2010 - PART 2 – 2 DAYS

Students will create complex Access databases by structuring existing data, writing advanced queries, working with macros, and performing database maintenance. **ILT OLL ML**

### ACCESS 2010 - PART 3 – 1 DAY

In this course students will exchange data with other applications, automate business processes by using VBA code, and secure and share databases. **ILT OLL ML**

### ACCESS 2013 - PART 1 – 2 DAYS **ILT OLL**

### ACCESS 2013 - PART 2 – 2 DAYS **ILT OLL**

### ADOBE ACROBAT X PRO - LEVEL 1 – 1 DAY

In this course, students will use Adobe Acrobat? Pro to create and manage PDF documents. **ILT OLL ML**

### ADOBE ACROBAT X PRO - LEVEL 2 – 1 DAY

In this course, students will use Adobe® Acrobat? Pro to convert documents to PDF files, enhance and customize PDF documents for interactive use online, and prepare them for printing. **ILT OLL ML**

### ADOBE CAPTIVATE 5.0 - LEVEL 1 – 1 DAY

In this course, students will create software demonstrations and interactive training simulations using Adobe® Captivate® 5. **ILT OLL**

### ADOBE COLD FUSION 9 - LEVEL 1 – 1 DAY

Students will learn to build and deploy dynamic web applications using ColdFusion. **ILT OLL**

### ADOBE CONTRIBUTE CS4 – 1 DAY

In this course, students will administer and maintain a multi-user website using Adobe Contribute CS4. **ILT OLL**

### ADOBE CS5 - COMPREHENSIVE – 3 DAYS

The student will learn to use Adobe CS5 programs to create and manipulate web pages, print publications, images, animations, illustrations, and more. **ILT OLL**

### INTRODUCTION TO CSS – 2 DAYS

Students will learn to use Cascading Style Sheets to format HTML pages. **ILT OLL**

### ADOBE CREATIVE SUITE 5.5 - NEW FEATURES 1 DAY

In this course students will create software demonstrations and interactive training simulations using Adobe® Captivate® 4. **ILT OLL**

### CRYSTAL REPORTS 2011 - LEVEL 1 – 2 DAYS

In this course, students will learn how to create more sophisticated reports like subreports and cross-tabs. Also, they learn how to increase the speed and efficiency of their reports by using SQL queries and dictionaries. **ILT OLL ML**

### CRYSTAL REPORTS 2011 - LEVEL 2 - 2 DAYS

The student will learn to create complex reports using Crystal Reports' tools. **ILT OLL**

### ADOBE DREAMWEAVER CS5 - LEVEL 1 (MACINTOSH) 1 DAY

In this course, students will design, build, and upload a website. **ILT OLL**

### ADOBE DREAMWEAVER CS5 - LEVEL 2 (MACINTOSH) 1 DAY

In this course, students will develop professional-looking web pages using the Adobe® Dreamweaver® CS5 application. **ILT OLL ML**

### ADOBE DREAMWEAVER CS5 - LEVEL 1 – 1 DAY

In this course, students will design, build, and upload a website. **ILT OLL ML**

### ADOBE DREAMWEAVER CS5 - LEVEL 2 – 1 DAY

In this course, students will develop professional-looking web pages using the Adobe® Dreamweaver® CS5 application. **ILT OLL ML**

**WANT TO IMPROVE COMMUNICATIONS**, increase productivity, and streamline/automate processes—all of which can impact the bottom line? New Horizons offers more than 400 desktop applications courses in areas such as word processing, databases, graphics, desktop presentations, operating systems (and more!) that can help you meet your business goals. Courses are offered at multiple skill levels (Level 1, Level 2, Level 3) with curriculum that provides practical hands-on knowledge. Classes are available during the day or evening in multiple learning modalities – including on-site at your company’s location of choice.

**ADOBE DREAMWEAVER CS5 - LEVEL 3 – 1 DAY**

In this course, students will create and manage database-driven websites. **ILT OLL**

**ADOBE DREAMWEAVER CS5 - COMPREHENSIVE – 3 DAYS**

You will design, build, and upload a website, develop professional-looking web pages using the Adobe Dreamweaver CS5 application, and create and manage database-driven websites. **ILT OLL**

**ADOBE DREAMWEAVER CS6 - PART 1 – 1 DAY**

**ILT OLL**

**ADOBE DREAMWEAVER CS6 - PART 2 – 1 DAY**

**ILT OLL**

**EXCEL 2010 - PART 1 – 1 DAY**



In this course, students will create and edit basic Microsoft Office Excel 2010 worksheets and workbooks. **ILT OLL ML**

**EXCEL 2010 - PART 2 – 1 DAY**



The student will learn to use advanced formulas and work with various tools to analyze data in spreadsheets. You will also organize table data, present data as charts, and enhance the look and appeal of workbooks by adding graphical objects. **ILT OLL ML**

**EXCEL 2010 - PART 3 – 1 DAY**



The students will learn to automate some common Excel tasks, apply advanced analysis techniques to more complex data sets, troubleshoot errors, collaborate on worksheets, and share Excel data with other applications. **ILT OLL ML**

**EXCEL 2010 - PART 4 – 1 DAY**



In this course, students will use the advanced features of Microsoft® Office Excel® 2010 to attain proficiency as an Excel power user. **ILT OLL ML**

**EXCEL 2010 CERTIFICATION PREPARATION 3 DAYS**

Students will use the features of Microsoft® Office Excel® 2010 to attain proficiency as an Excel power user. **ILT OLL**

**EXCEL 2010 PIVOT TABLES – 0.5 DAY**



In this course, students will create and analyze PivotTable data. **ILT OLL ML**

**EXCEL 2010 POWERPIVOT – 1 DAY**



In this course, students will make use of the PowerPivot add-in to import data from various sources and create a dynamic report. **ILT OLL ML**

**EXCEL 2010 - VBA - 3 DAYS**

The student will learn to automate job tasks in Microsoft® Office Excel® 2010. **ILT OLL**

**EXCEL 2011 (MACINTOSH) - LEVEL 1 – 1 DAY**

In this course, students create and edit basic Microsoft® Office Excel® 2007 worksheets and workbooks. (Second Edition). **ILT OLL ML**

**EXCEL 2011 (MACINTOSH) - LEVEL 2 – 1 DAY**

In this course, students will use advanced formulas and work with various tools to analyze data in spreadsheets. Students will also organize table data, present data as charts, and enhance the look and appeal of workbooks by adding graphical objects. **ILT OLL ML**

**EXCEL 2013 - PART 1 - 1 DAY**

**ILT OLL**

**EXCEL 2013 - PART 2 - 1 DAY**

**ILT OLL**

**EXCEL 2013 - PART 3 - 1 DAY**

**ILT OLL**

**ADOBE FIREWORKS CS5 - LEVEL 1 – 2 DAYS**

In this course, students will use Adobe Fireworks CS5 to create vector graphics, edit bitmap graphics, optimize images, create and assign rollover effects, and create multiple pages for the web. **ILT OLL**

**ADOBE FLASH CS5 - LEVEL 1 (MACINTOSH) 2 DAYS**

In this course, students will create and manipulate a wide variety of objects ranging from simple graphic designs to complex animation sequences using the Adobe® Flash® CS5 application. **ILT OLL**

**ADOBE FLASH CS5 - LEVEL 2 (MACINTOSH) 2 DAYS**

In this course, students will plan, design, and develop complex Flash projects using the Adobe® Flash® CS5 application. **ILT OLL ML**

**ADOBE FLASH CS5 - LEVEL 1 – 2 DAYS**

In this course, students will create and manipulate a wide variety of objects ranging from simple graphic designs to complex animation sequences using the Adobe® Flash® CS5 application. **ILT OLL ML**

**ADOBE FLASH CS5 - LEVEL 2 – 2 DAYS**

In this course, students will plan, design, and develop complex Flash projects using the Adobe® Flash® CS5 application. **ILT OLL ML**

**ADOBE FLASH CS5 - LEVEL 3 – 1 DAY**

In this course, students will build Flash applications using advanced features of Flash CS5 and ActionScript 3.0. **ILT OLL ML**

**ADOBE FLASH CS5 - COMPREHENSIVE 3 DAYS**

Students will learn to create and manipulate a wide variety of objects; plan, design and develop complex Flash projects; and build Flash applications using the advanced features of the Flash CS5 and ActionScript 3.0 applications. **ILT OLL**

**ADOBE FLASH CS6 - PART 1 – 2 DAYS**

**ILT OLL**

**ADOBE FLASH CS6 - PART 2 – 2 DAYS**

**ILT OLL**

**ADOBE ILLUSTRATOR CS5 - LEVEL 1 (MACINTOSH) 1 DAY**

In this course, students will use Adobe Illustrator CS5 to create illustrations that include graphics and text. **ILT OLL**

**ADOBE ILLUSTRATOR CS5 - LEVEL 2 (MACINTOSH) 1 DAY**

In this course, students will create complex illustrations, manage color across a range of devices, work with graphs and variables, control how illustrations appear on print and the web, and preview them on mobile devices. **ILT OLL**

**ADOBE ILLUSTRATOR CS5 - LEVEL 1 - 1 DAY**

In this course, students will use Adobe Illustrator CS5 to create illustrations that include graphics and text. **ILT OLL**

**ADOBE ILLUSTRATOR CS5 - LEVEL 2 - 1 DAY**

In this course, students will create complex illustrations, manage color across a range of devices, work with graphs and variables, control how illustrations appear on print and the web, and preview them on mobile devices. **ILT OLL**

**ADOBE ILLUSTRATOR CS5 - COMPREHENSIVE 3 DAYS**

Students learn to create illustrations that include graphics and text, create complex illustrations, manage color across devices, work with graphs and variables, control how illustrations appear on print and the web, and preview on mobile devices. **ILT OLL**

**ADOBE ILLUSTRATOR CS6 - PART 1 –1 DAY**

**ILT OLL**

**ADOBE ILLUSTRATOR CS6 - PART 2 –1 DAY**

**ILT OLL**

**ILT Instructor-Led Training**

**OLL OnLine LIVE - Virtual ILT**

**ML Mentored Learning**



# PC Desktop Application Training

## ADOBE INDESIGN CS5 - COMPREHENSIVE 3 DAYS

Students will use the features of Adobe® InDesign® CS5 to create and design content for the web and print.

**ILT OLL**

## ADOBE INDESIGN CS5 - LEVEL 1 (MACINTOSH) 1 DAY

In this course, students will utilize Adobe® InDesign® CS5 to create and deliver eye-catching printed documents.

**ILT OLL**

## ADOBE INDESIGN CS5 - LEVEL 2 (MACINTOSH) 1 DAY

In this course, students will use the advanced features of Adobe® InDesign® CS5 to create and design content for the web and print.

**ILT OLL ML**

## ADOBE INDESIGN CS5 - LEVEL 1 – 1 DAY

In this course students will utilize Adobe® InDesign® CS5 to create and deliver eye-catching printed documents.

**ILT OLL ML**

## ADOBE INDESIGN CS5 - LEVEL 2 – 1 DAY

In this course, students will use the advanced features of Adobe® InDesign® CS5 to create and design content for the web and print.

**ILT OLL ML**

## ADOBE INDESIGN CS6 - PART 1 – 1 DAY

**ILT OLL**

## ADOBE INDESIGN CS6 - PART 2 – 1 DAY

**ILT OLL**

## INFOPATH 2010 - CREATING INFOPATH FORMS 1 DAY

In this course, students will learn how to use InfoPath to gather and share information by creating and implementing XML-based forms.

**ILT OLL ML**

## JAVASCRIPT - ENHANCING WEB PAGES 1 DAY

Students will learn how to add various JavaScript enhancements to Web sites.

**ILT OLL ML**

## LYNC 2010 FOR THE BUSINESS PROFESSIONAL – 0.5 DAY

This half-day course covers the essentials of using Lync 2010 for business. Students will learn how to initiate and answer Lync voice calls, how to engage in instant messaging with colleagues, and how to set up, conduct and participate in online meetings.

**ILT OLL**

## INTRODUCTION TO CLOUD COMPUTING 1 DAY

In this course, students will define cloud computing technology and describe its impact on IT scenario.

**ILT OLL**

## INTRODUCTION TO SQL - 2 DAY

Students will learn SQL to build applications or to generate business reports. The SQL learned in the course is applicable to all major databases.

**ILT OLL**

## INTRODUCTION TO GOOGLE ADWORDS 1 DAY

Students will be introduced to the world of search engine marketing, or SEM, and become familiar with the Google AdWords tool to best serve their online marketing needs.

**ILT OLL ML**

## GOOGLE ADWORDS FOR BUSINESSES – 1 DAY

In this course, students will create an AdWords account, run an ad campaign, and track the performance of ads.

**ILT OLL ML**

## GOOGLE APPS FOR BUSINESS– 2 DAYS

In this course, students will communicate and collaborate with others using the various applications in Google Apps.

**ILT OLL ML**

## IPAD BUSINESS PRODUCTIVITY - 1 DAY

In this course, students will define cloud computing technology and describe its impact on IT scenario.

**ILT OLL**

## MAKING GOOGLE WORK FOR YOU – 1 DAY

In this course, students will use products such as Google Chrome, Google Mail, Google Desktop, iGoogle, and Google Maps. Students will use Google gadgets and applications to communicate, collaborate, obtain, and download information from the Internet.

**ILT OLL ML**

## MICROSOFT SHAREPOINT DESIGNER 2010 - LEVEL 1 – 1 DAY

In this course students will use Microsoft® Office SharePoint® Designer 2010 to create and modify a SharePoint site.

**ILT OLL ML**

## MICROSOFT SHAREPOINT DESIGNER 2010 - LEVEL 2 – 1 DAY

In this course, students will extend a SharePoint site by including server-side controls and administer a SharePoint site.

**ILT OLL ML**

## MICROSOFT SHAREPOINT FOUNDATION 2010 - LEVEL 1 – 2 DAYS

In this course, students will use, create, and edit content in a team website. Students will also create and perform basic management of a team site using SharePoint Foundation 2010.

**ILT OLL ML**

## MICROSOFT SHAREPOINT FOUNDATION 2010 - LEVEL 2 - 2 DAYS

In this course, students will manage site collections and site components as a site collection administrator and as a site administrator.

**ILT OLL**

## MICROSOFT SHAREPOINT SERVER 2010 - INTRODUCTION – 1 DAY

In this course, students will collaborate with team members and share information with them using Microsoft SharePoint Server 2010.

**ILT OLL ML**

## OFFICE 365 - OFFICE WEB APPS – 1 DAY

**ILT OLL**

## (50588) OFFICE 365: A DAY IN THE LIFE OF THE END-USER – 1 DAY

This course provides students with the knowledge and skills to productively utilize Office 365. The course focuses on day in the life scenarios for working in Outlook Web Access (OWA), accessing new features of Outlook 2010.

**ILT**

## ONENOTE 2010 – 1 DAY

In this course, students will create, edit, organize, and enhance notes and also integrate them with other applications using Microsoft OneNote 2010.

**ILT OLL ML**

## OUTLOOK 2010 - PART 1 – 1 DAY



In this course students will use Outlook to compose and send email, schedule appointments and meetings, manage contact information, schedule tasks, and create notes.

**ILT OLL ML**

## OUTLOOK 2010 - PART 2 – 1 DAY



In this course, students will customize the Outlook environment, calendar, and mail messages, and will also track, share, assign, and quickly locate various Outlook items.

**ILT OLL ML**

## OUTLOOK 2010 - PART 3 – 1 DAY



In this course, students will work with the advanced features of Outlook.

**ILT OLL ML**

## OUTLOOK 2013 - PART 1 – 1 DAY

**ILT OLL**

## OUTLOOK 2013 - PART 2 – 1 DAY

**ILT OLL**

## OUTLOOK 2013 - PART 3 – 1 DAY

**ILT OLL**

## ADOBE PHOTOSHOP CS5 – COMPREHENSIVE 3 DAYS

Students will use the features of Adobe® InDesign® CS5 to create and design content for the web and print.

**ILT OLL ML**

## ADOBE PHOTOSHOP CS5 - LEVEL 1 (MACINTOSH) 2 DAYS

In this course students will use the different tools in Photoshop for selecting parts of images and identify the need for having layers in a Photoshop document. Students will also organize the different components of the design as layers.

**ILT OLL**

## ADOBE PHOTOSHOP CS5 - LEVEL 2 (MACINTOSH) 1 DAY

In this course, students will enhance your ability to create accurate masks and image effects, retouch images, work with video files, automate repetitive tasks, and integrate with other Adobe applications.

**ILT OLL**

## ADOBE PHOTOSHOP CS5 PHOTO PRINTING AND COLOR – 1 DAY

In this course, students will use color management techniques and color correct images to ensure optimal print output.

**ILT OLL**

## ADOBE PHOTOSHOP CS5 PHOTO PRINTING AND COLOR (MACINTOSH) 1 DAY

In this course, students will use color management techniques and color correct images to ensure optimal print output.

**ILT OLL**

## ADOBE PHOTOSHOP CS5 WEB PRODUCTION – 1 DAY

In this course, students will set Photoshop's unit preferences and save files in different formats to see how well each format balances image quality with file size reduction.

**ILT OLL**

## ADOBE PHOTOSHOP CS6 - PART 1 – 1 DAY

**ILT OLL**

## ADOBE PHOTOSHOP CS6 - PART 2 – 1 DAY

**ILT OLL**

## ADOBE PHOTOSHOP WEB PRODUCTION (MACINTOSH) – 1 DAY

Students will set Photoshop's unit preferences and save files in different formats to see how well each format balances image quality with file size reduction. Students will then calibrate their system's color display

as well as create a HTML web page. **ILT OLL**

#### **POWERPOINT 2010 - PART 1 – 1 DAY**

Students will explore the PowerPoint environment and create a presentation. Students will add graphical objects to a presentation and modify them. Students will also add tables and charts to a presentation to present data in a structured form. **ILT OLL ML**

#### **POWERPOINT 2010 - PART 2 – 1 DAY**

In this course students will enhance their presentation by using features that will transform it into a powerful means of communication. They will customize the PowerPoint interface to suit your requirements and use features to create presentations. **ILT OLL ML**

#### **POWERPOINT 2011 (MACINTOSH) – LEVEL 1 1 DAY**

In this course, students will work with Microsoft Office PowerPoint 2008 to create electronic presentations. **ILT OLL ML**

#### **POWERPOINT 2011 (MACINTOSH) – LEVEL 2 1 DAY**

Students will enhance your presentation by using features that will transform it into a powerful means of communication. Students will customize the PowerPoint interface to suit your requirements and use features to create dynamic presentations. **ILT OLL ML**

#### **POWERPOINT 2013 - PART 1 – 1 DAY** **ILT OLL**

#### **POWERPOINT 2013 - PART 2 – 1 DAY** **ILT OLL**

#### **PROJECT 2010 - PART 1 – 1 DAY**

In this course, students will create and manage a project schedule using Microsoft® Project 2010. **ILT OLL ML**

#### **PROJECT 2010 – PART 2 – 1 DAY**

Students will manage and customize project plans during the implementation stage of a project. **ILT OLL ML**

#### **PROJECT 2010 WEB APP – 1 DAY**

In this course, students will view and manage project related information. **ILT OLL ML**

#### **PROJECT MANAGEMENT ESSENTIALS – 3 DAY**

In this course, students will identify and apply generally recognized practices in project management. **ILT OLL ML**

#### **PUBLISHER 2010 - PART 1 – 1 DAY**

In this course, students will create, format, edit, and distribute publications. **ILT OLL ML**

#### **QUARKXPRESS 8.0 – LEVEL 1 – 1 DAY**

In this course, students will use QuarkXPress 8 to set up and lay out single-page and multiple-page documents. **ILT OLL ML**

#### **QUARKXPRESS 8.0 – LEVEL 2 – 1 DAY**

In this course, students will work on existing layouts using techniques to present content effectively and attractively and make them more professional-looking. **ILT OLL ML**

#### **QUICKBOOKS 2012 – LEVEL 1 – 1 DAY**

The student will be introduced to Quickbooks primary features as well as the new features and functionality of this version. **ILT OLL ML**

#### **QUICKBOOKS 2012 – LEVEL 2 – 1 DAY**

The student will be introduced to the primary features of Quickbooks 2012 and learn the new features and functionality of this version. **ILT OLL ML**

#### **VISIO PROFESSIONAL 2010 - LEVEL 1 – 1 DAY**

In this course, students will design and manage basic diagrams, workflows, and flowcharts. **ILT OLL ML**

#### **VISIO PROFESSIONAL 2010 - LEVEL 2 – 1 DAY**

In this course, students will create custom elements and a custom template, represent external data as a drawing, and share your work with others. **ILT OLL ML**

#### **WEB DESIGN WITH HTML5 AND CSS3 - LEVEL 1 - 1 DAY**

In this course, students will use HTML5 to create and design web pages. **ILT OLL**

#### **WINDOWS 7 - LEVEL 1 – 1 DAY**

Students will log on to Windows 7, explore its interface, identify the different components in the interface, customize the Windows 7 desktop, manage files and folders, use the common tools and programs available in Windows 7, and browse the Internet. **ILT OLL ML**

#### **WINDOWS 7 - LEVEL 2 – 1 DAY**

In this course, students will familiarize yourself with the advanced customization techniques and work with applications and programs in Windows® 7. In addition to this, students will also work with Internet Explorer 8. **ILT OLL ML**

#### **USING MICROSOFT WINDOWS 8 – 1 DAY**

**ILT OLL**

#### **WINDOWS 8 TABLET FOR BUSINESS USE 1 DAY** **ILT OLL**

#### **WINDOWS 8 TRANSITION FROM WINDOWS 7 1 DAY** **ILT OLL**

#### **WINDOWS SHAREPOINT SERVICES 3.0 - LEVEL 1 2 DAYS**

In this course, students will use, create and edit Windows SharePoint Services 3.0 content and create and manage a team site. **ILT OLL ML**

#### **WINDOWS SHAREPOINT SERVICES 3.0 - LEVEL 2 – 2 DAYS**

In this course, students will learn how manage team sites as a site owner and as a SharePoint Services administrator. **ILT OLL ML**

#### **WORD 2010 - PART 1 – 1 DAY**

In this course, students will create, edit, and enhance standard business documents using Microsoft® Office Word 2010. **ILT OLL ML**

#### **WORD 2010 - PART 2 – 1 DAY**

In this course, students will create complex documents and build personalized efficiency tools using Microsoft Office Word 2010. **ILT OLL ML**

#### **WORD 2010 - PART 3 – 1 DAY**

In this course, students will create, manage, revise, and distribute long documents. **ILT OLL ML**

#### **WORD 2011 (MACINTOSH) - LEVEL 1 – 1 DAY**

In this course, students create, edit, and format standard documents in Microsoft Office Word 2008 for Macintosh. **ILT OLL ML**

#### **WORD 2011 (MACINTOSH) - LEVEL 2 – 1 DAY**

In this course, students will create complex documents and build personalized efficiency tools using Microsoft Office Word 2011. **ILT OLL ML**

#### **WORD 2013 - PART 1 – 1 DAY** **ILT OLL**

#### **WORD 2013 - PART 2 – 1 DAY** **ILT OLL**

#### **WORD 2013 - PART 3 – 1 DAY** **ILT OLL**

**ILT** Instructor-Led Training

**OLL** OnLine LIVE - Virtual ILT

**ML** Mentored Learning

  
**New Horizons®**  
Computer Learning Centers  
[www.newhorizons.com](http://www.newhorizons.com)



## Business Skills Training

### GET AHEAD WITH CURRENT BUSINESS SKILLS!

Today's emerging business managers must have a complete and balanced skill-set to be productive within their organization and competitive in the marketplace.

**Build valuable business skills in classes like these:**

**BUSINESS WRITING:** Poor writing skills can leave a bad impression of you and your business. Learn how to use writing to effectively communicate information in the proper formats for various written pieces, such as business letters, e-mail messages, and memos.

**TIME MANAGEMENT:** Effectively manage your time by learning how to identify goals, create daily plans and increase productivity by controlling interruptions.

**MANAGERIAL LEADERSHIP:** Develop the skills to effectively motivate, empower, and lead people. Learn how to motivate employees during times of change and resolve conflicts.

**PROJECT TEAMS:** Building a team or working with other departments can be a source of conflict instead of success. Learn to build a project team that works together, communicates effectively and is motivated for success.

**Popular Course Combinations include:**

- Financial Management
- Excel and Financial Management:
- Business Etiquette
- Sales Skills (Basic)
- Strategic Decision Making
- Excel 2003 or 2007 (Levels 1, 2 & 3)
- Organizational Skills
- Project Management Fundamentals
- Effective Business Writing
- Outlook 2003 or 2007 (Levels 1, 2 & 3)
- Word 2003 or 2007 (Levels 1, 2 & 3)
- Business Accounting

#### BUSINESS CASE WRITING – 1 DAY

In this course, students will identify the elements of a business case, find out how to gather and present all the critical information, and make a compelling argument in favor of funding. **ILT**

#### ADVANCED BUSINESS WRITING – 1 DAY

In this course, student will learn how to choose the best document to use and prepare to write the document to help you achieve your business goals. **ILT**

#### ADVANCED COMMUNICATION SKILLS – 1 DAY

In this course, students will be shown how to apply advanced verbal and written communication techniques in the workplace. **ILT**

#### APPRAISING PERFORMANCE – 1 DAY

This course provides an overview of the basics of conducting performance appraisals. It provides guidelines and best practices for evaluating and improving the work performance of employees, thereby increasing quality and productivity. **ILT**

#### BUSINESS CRISIS MANAGEMENT – 1 DAY

In this course, students will manage business crises. **ILT**

#### CLIENT RELATIONSHIP MANAGEMENT – 1 DAY

In this course, students will manage client relationships during various phases of a project's life cycle. **ILT**

#### COACHING IN THE WORKPLACE – 1 DAY

In this course, students will learn how to coach in the workplace. **ILT**

#### CONSULTING SKILLS – 1 DAY

Students will develop the necessary skills to be a successful consultant, by learning from the best: industry expert Elaine Beich. Students will explore the basics of consulting and how it may affect their work and their organization. **ILT**



**MASTER THE CRITICAL SKILLS** that propel dynamic careers and grow successful businesses. Today's emerging business professionals must have a complete and balanced skill-set to be productive within their organizations and competitive in the marketplace. New Horizons has the solution: Business Skills Training. You can choose from an extensive list of seminar style courses that will give you the practical skills you'll use every day to get ahead in business.

\*NOTE: The PDU (Professional Development Unit) is the measuring unit used by PMI to quantify approved learning and professional service activities. For those students that are looking for PDUs, New Horizons Business Skills Training can be claimed for Continuing Certification Requirements (CCR) with PMI as Category 4 training.

### CREATING A WINNING MANAGEMENT STYLE 1 DAY

In this course, students will learn to adopt the best practices for a winning management style and to build an effective team. **ILT**

### CUSTOMER SERVICE – 1 DAY

In this course, students will explore the background and techniques of customer interactions. **ILT**

### CUSTOMER SERVICE VIA PHONE AND EMAIL 1 DAY

In this course, students practice skills and apply principles for providing customer service remotely, via telephone and the web. **ILT**

### DEALING WITH CHALLENGING CUSTOMER INTERACTIONS – 1 DAY

In this course, students will explore methods for dealing with common difficult customer interactions. **ILT**

### DEVELOPING AND PRESENTING SUCCESSFUL TRAINING FOR NON-TRAINING PROFESSIONALS – 1 DAY

In this course, students will learn how to develop and present successful training. **ILT**

### DEVELOPING YOURSELF AS A LEADER 1 DAY

This course will provide the methods to perform a personal assessment so that new managers can identify areas for improvement and apply strategies to develop and grow their leadership capabilities. **ILT**

### EFFECTIVE BUSINESS WRITING – 1 DAY

This course offers effective strategies to sharpen your writing skills by structuring your ideas logically, exercising diplomacy in letters and reports, and shaping your arguments. **ILT**

### EFFECTIVE CONTRACT NEGOTIATION FOR IT MANAGERS – 1 DAY

In this course, students will perform IT contract negotiations. **ILT**

### EFFECTIVE FACILITATION SKILLS – 1 DAY

In this course, students will strategically plan work sessions and create formal agendas, lead groups to generate new ideas through brainstorming events, and help people work through facilitated difficult sessions. **ILT**

### EFFECTIVE TIME MANAGEMENT – 1 DAY

In this course, students will practice techniques that will help them achieve more effective use of their time so that they can direct their energy towards the activities that will further their professional and personal goals. **ILT**

### EMOTIONAL INTELLIGENCE FOR MANAGERS 1 DAY

In this course, students will assess their current emotional intelligence capabilities, determine strengths, and identify areas for improvement. They will examine

how emotions affect behavior and how those behaviors impact relationships with others. **ILT**

### EMPLOYEE RELATIONS – 1 DAY

In this course, students will identify strategies for maintaining effective employee relations. **ILT**

### FUNDAMENTALS OF COMMUNICATION 1 DAY

This course provides an overview of the basic principles of business communication. It provides guidelines and best practices for effectively communicating in the workplace. **ILT**

### FUNDAMENTALS OF CUSTOMER SERVICE 1 DAY

This course provides guidelines and best practices for providing excellent customer service that will enable frontline associates and service staff in back-up and support roles to build, maintain, and increase a loyal customer base. **ILT**

### FUNDAMENTALS OF FINANCE FOR IT MANAGERS – 1 DAY

Students will identify the fundamental concepts of finance, the budgeting process, and how a budget is prepared. Students will also identify project costs and how to monitor and control them. Students will also explore some financial statements. **ILT**

### GETTING THE RESULTS WITHOUT THE AUTHORITY – 1 DAY

This course offers strategies to build relationships, identify the key people you will need to help complete your project, ask them for the assistance that you need, and orchestrate the process of moving your project forward to completion. **ILT**

### GIVING AND RECEIVING PERFORMANCE FEEDBACK – 1 DAY

In this course, students will give and receive performance feedback. **ILT**

### HAVING TOUGH TALKS – 0.5 DAY

In this course, students will use Lead Star's leadership communication skills to resolve challenging and sensitive performance and conduct problems. **ILT OLL**

### INTRODUCTION TO GOOGLE ANALYTICS 2 DAYS

This course introduces the student to web analysis using Google Analytics. **ILT OLL**

### ADVANCED GOOGLE ANALYTICS 1 DAY

This course continues from Introduction to Google Analytics. **ILT OLL**

### GOOGLE ANALYTICS FOR BUSINESSES 1 DAY

In this course, students will track and analyze websites and applications. **ILT**

### ADVANCED GOOGLE ADWORDS – 1 DAY

Students will take a deeper dive into understanding and optimizing search engine marketing campaigns, covering advanced features of Google AdWords. **ILT**

### GRAMMAR ESSENTIALS – 1 DAY

In this course, students will review the rules of grammar, identify common grammar errors, and refine their business writing style. **ILT**

### HIRING OUTSTANDING TEAMS – 1 DAY

In this course, students assess the team needs, attract candidates, interview them, select and hire the ideal candidate, and integrate the employee into their team. **ILT**

### HR OPTIMIZATION – 1 DAY

In this course, students will optimize your human resources practices. **ILT**

### INTRODUCTION TO EFFECTIVE PRESENTATIONS – 1 DAY

In this course, students will learn active listening skills to facilitate the exchange of ideas in meetings and presentations. They will also organize ideas to create coherent and convincing oral presentations. **ILT**

### INTERVIEWING SKILLS FOR MANAGEMENT 1 DAY

In this course, students will examine guidelines and strategies for making effective hiring decisions. This can reduce or even eliminate significant turnover and allow your company to focus instead on achieving production goals. **ILT**

### IT PROJECTS - INFLUENCING WITHOUT AUTHORITY – 1 DAY

In this course, students will influence others to get results in your IT projects without any formal authority. **ILT**

### LEADERSHIP SKILLS – 0.5 DAY

Students will develop critical leadership skills to be able to step forward with confidence as a leader in your organization. Students will develop practical, necessary skills such as managing your time well, communicating effectively, and delegating work. **ILT**

**ILT** Instructor-Led Training

**OLL** OnLine LIVE - Virtual ILT

**ML** Mentored Learning



[www.newhorizons.com](http://www.newhorizons.com)

## Business Skills Training

### LEADING IN TOUGH TIMES – 1 DAY

In this course, students will learn to lead during tough times. **ILT**

### LEADING VIRTUAL TEAMS – 1 DAY

In this course students practice skills and apply principles for leading virtual teams so teams can achieve high-performance status. **ILT**

### MANAGING INFORMATION EFFECTIVELY 1 DAY

In this course, students will apply important principles and skills to manage the information they have to do their job. **ILT**

### MANAGING MULTIGENERATIONAL TEAMS 1 DAY

In this course, students will recognize how generational differences affect a team's performance and conduct, students will change problematic behavior, leverage generational assets, and hire and retain members of a specific generation to complement teams. **ILT**

### MANAGING ORGANIZATIONAL GOALS 1 DAY

In this course, students will develop skills needed to establish tactical goals for their team based on organizational directives and general goals from their manager and create and manage action plans to achieve these goals. **ILT**

### MANAGING OUTSOURCED PROJECTS AS AN IT VENDOR – 1 DAY

In this course, students will examine the management of outsourced projects as an IT vendor. **ILT**

### MANAGING PROJECT TEAMS – 1 DAY

In this course, students will determine how to manage the team so that it remains effective. They will identify ways of building a team, apply strategies for managing a working team, and identify ways of effectively decommissioning a team. **ILT**

### MARKETING ESSENTIALS – 1 DAY

In this course, students will develop essential marketing skills. They will learn strategic and tactical skills to use to create, execute, and evaluate a marketing plan. **ILT**

### MOTIVATING YOUR EMPLOYEES – 1 DAY

This course will assist students in understanding and implementing strategies that will help to motivate their work force. **ILT**

### NEGOTIATING SKILLS – 1 DAY

In this course, students will perform the basic steps in a business negotiation. **ILT**

### POSITIVE WORK ENVIRONMENT – 1 DAY

In this course students will apply methods of overcoming a negative work environment and creating a positive work environment. **ILT**

### PRACTICAL LEADERSHIP – 1 DAY

In this course, students will learn the practical skills they need to be an effective leader in their organization. **ILT**

### PUBLIC PRESENTATIONS – 1 DAY

In this course, students will gain confidence in public speaking by practicing proven techniques for preparing and delivering effective public presentations. **ILT**

### RECRUITING THE WORKFORCE OF THE FUTURE – 1 DAY

In this course, students will develop the skills they need to develop the right-sized workforce for today's business needs. Students will also explore traditional hiring criteria and create new, more appropriate employee profiles. **ILT**

### SALES NEGOTIATION – 1 DAY

In this course, students will apply sales negotiation strategies when interacting with customers to achieve a mutually beneficial outcome. **ILT**

### SALES TERRITORY MANAGEMENT – 1 DAY

In this course, students will identify how to plan daily tasks efficiently, manage territory effectively, and maximize business success. **ILT**

### SEXUAL HARASSMENT AWARENESS FOR EMPLOYEES – 0.5 DAY

In this course, students will develop a working knowledge of how to prevent sexual harassment for non-management employees. **ILT**

### SEXUAL HARASSMENT AWARENESS FOR SUPERVISORS – 0.5 DAY

In this course, students will identify methods of educating and guiding supervisors and managers to prevent sexual harassment complaints and concerns. **ILT**

### SIX SIGMA GREEN BELT – 1 DAY

Students will implement Six Sigma as a Green Belt. **ILT**

### SIX SIGMA LEAN - INTRODUCTION – 1 DAY

In this course, students will identify the fundamental concepts of Lean Six Sigma. **ILT**

### LEAN SIX SIGMA MASTER BLACK BELT 5 DAYS

The Lean Six Sigma Master Black Belt program allows students to complete certification requirements faster than traditional Lean Six Sigma training programs. This course combines combines Six Sigma Methodology and Lean Thinking. **ILT OLL**

### STRATEGIC DEVELOPMENT OF TALENT 1 DAY

In this course, students will strategically develop talent in their organization. **ILT**

### TEAM SPONSORSHIP – 1 DAY

In this course, students will acquire skills and strategies to sponsor teams. **ILT**

### WOMEN IN LEADERSHIP – 1 DAY

Students will recognize leadership traits and compare their own leadership styles to those they have identified. Students will practice effective leadership skills and get around challenges that prevent female leaders from advancing in their careers. **ILT**



# Get Certified Today!

Certification makes you more attractive to employers. In today's competitive job market, you need every advantage you can get. You need technical skills, and you need proof of those skills. That's why more people like yourself are getting certified as a way to start a career in fast-growing fields like IT.

## CompTIA®

# Project Management Training Employment Trends

- Out of 13 advertisements for project manager jobs posted on CIO.com and Dice.com, 8 ads either require or prefer project management certification.
- All 8 ads are for mid- to senior-level IT project management positions that require anywhere from a minimum of 5 to 11+ more years of experience.
- 5 of the 8 ads say project management certification is “highly desirable,” “an advantage,” “preferred,” or “a plus.” The three ads that require certification all specify the Project Management Institute’s (PMI) Project Management Professional (PMP) credential.
- More and more CIOs believe in the importance of project management certifications, according to research from The Standish Group. The publisher of the CHAOS reports which track IT project success and failure rates says that two-thirds of CIOs it surveyed regard a PMI certification as valuable. The number of CIOs who require their project managers to be certified grew from 21% percent in 2005 to 31% percent by 2009.

Go to [www.newhorizons.com](http://www.newhorizons.com) to find the latest Project Management Courses!

## Classroom Rentals

Wondering where to hold your employee training?  
Reserve our classrooms for the day, week or year.

For more information about dates, times and locations  
contact your Account Executive today!

**ILT** Instructor-Led Training

**OLL** OnLine LIVE - Virtual ILT

**ML** Mentored Learning

  
**New Horizons**<sup>®</sup>  
Computer Learning Centers  
[www.newhorizons.com](http://www.newhorizons.com)



## Project Management Training

### BUSINESS SKILLS

#### PROJECT MANAGEMENT SKILLS FOR NON-PROJECT MANAGERS – 1 DAY

Learn how to strategically plan a project so you can achieve the desired results on time and on budget. Identify project requirements and resources, monitor the project's progress, and mitigate related obstacles so you can lead a team in bringing the project to a successful completion. **ILT**

#### PROJECT MANAGEMENT FUNDAMENTALS 1 DAY

In this course, students will identify effective project management practices and their related processes. They will examine the elements of sound project management and apply the generally recognized practices to successfully manage projects. **ILT OLL**

### PROJECT MANAGEMENT

#### CERTIFIED ASSOCIATE IN PROJECT MANAGEMENT (CAPM®) - FOURTH EDITION 3 DAYS

In this course students will apply the generally recognized practices of project management acknowledged by the Project Management Institute (PMI®) to manage projects successfully. **ILT OLL ML**

#### INTRODUCTION TO AGILE PROJECT MANAGEMENT – 1 DAY

In this course, students become familiar with the concepts of traditional project management and may have used the concepts to manage multiple projects. Students will use Agile project management. **ILT OLL ML**

#### INTRODUCTION TO PROJECT PORTFOLIO MANAGEMENT – 1 DAY

In this course, students become familiar with the basic concepts of Project Portfolio Management (PPM). **ILT OLL ML**

#### RISK MANAGEMENT PROFESSIONAL (PMI-RMP) CERTIFICATION – 3 DAYS

In this course, students will apply the generally recognized practices of project risk management acknowledged by the Project Management Institute (PMI) to manage project risks successfully. **ILT OLL**

#### PROJECT MANAGEMENT ESSENTIALS 3 DAYS

In this course, students will identify and apply generally recognized practices in project management. **ILT OLL ML**

#### PROJECT MANAGEMENT PROFESSIONAL (PMP®) CERTIFICATION PREPARATION 5 DAYS

In this course, students will apply the generally recognized practices of project management acknowledged by the Project Management Institute (PMI®) to successfully manage projects. **ILT OLL ML**

**ILT** Instructor-Led Training

**OLL** OnLine LIVE

**ML** Mentored Learning

  
New Horizons®  
Computer Learning Centers

[www.newhorizons.com](http://www.newhorizons.com)

# Why New Horizons Training?



Our Students Notice a Difference!

1. Over 98% of New Horizons clients would recommend New Horizons to others.

*Return on investment*

2. Over 98% of the students surveyed are very satisfied with overall instructor performance.

3. Over 70% of the new knowledge and skills learned at New Horizons is applied on the job within the first eight weeks.

*Enhance Efficiencies*

4. Over 70% of the students surveyed expect training to have a significant impact on the job productivity.

5. New Horizons training yields a 4:1 benefit-to-cost ratio relative to the predicted increase in performance (tied to a standard salary classification).

*Improve Productivity*

6. Over 98% of our clients utilize the knowledge and skills gained through New Horizons training in their job.

7. Over 59% of New Horizons students state that the training received was critical to their job performance.

8. New Horizons students spend over 79% of their time on the job using their new knowledge and skills gained through New Horizons training.

*Return On Investment*

9. Over 65% of the students surveyed say that New Horizons training had a significant impact on increasing quality.

10. In a ranking of the top Microsoft Partners for Learning Solutions, 13 out of the top 20 training providers listed were New Horizons centers.

**LOCATIONS** - With over 300 centers in 70 countries, New Horizons is the world's largest independent IT training company. Through an integrated learning approach that ensures that new knowledge can be applied to real life situations, New Horizons delivers a full range of technology and business skills training from basic application and desktop productivity tools to complex and integrated business systems.

**ALABAMA**

Birmingham: 205-942-2522

**ARIZONA**

Phoenix: 480-736-9300  
Pima: 520-290-5600  
Sierra Vista: 800-720-4012  
Tucson: 520-290-5600

**CALIFORNIA**

Anaheim: 714-221-3100  
Burbank: 818-333-4600  
Carlsbad: 858-880-2200  
Chula Vista: 858-880-2200  
Laguna Hills: 714-221-3100  
Los Angeles: 310-342-3500  
Palm Desert: 858-880-2200  
Sacramento: 916-609-4700  
San Bernardino: 888-825-6684  
San Diego: 858-880-2200  
San Francisco: 714-940-8000  
San Marcos: 858-880-2200

**COLORADO**

Colorado Springs: 888-589-9545  
Denver (Downtown): 888-800-6045  
Denver (Englewood): 888-800-6045

**CONNECTICUT**

Fairfield & New Haven Counties  
860-768-3777  
Hartford: 860-768-3777

**DELAWARE**

Wilmington: 610-270-8700

**DISTRICT OF COLUMBIA**

Washington, DC: (703) 749-4030

**FLORIDA**

Fort Lauderdale: 866-756-8200  
Gainesville: 352-378-8007  
Jacksonville: 904-564-9500  
Miami: 866-756-8200  
Orlando: 407-210-4200  
Pensacola: 850-434-3414  
Tampa: 813-387-3500  
West Palm Beach: 866-756-8200

**GEORGIA**

Atlanta: 770-270-2000

**ILLINOIS**

Chicago (Downtown): 1-888-236-2319  
Chicago (Rosemont Area): 1-888-236-2319  
O'Fallon: 314-429-3311

**INDIANA**

Indianapolis: 317-575-7600  
Purdue University: 317-575-7639

**IOWA**

Cedar Rapids: 319-294-9035  
Des Moines: 515-226-3265  
Quad Cities: 563-441-1515

**KANSAS**

Kansas City/Overland Park: 913-660-9999

**KENTUCKY**

Lexington: 859-266-2900  
Louisville: 502-426-8519

**LOUISIANA**

New Orleans: 888-473-3040

**MASSACHUSETTS**

Boston: 781-487-3200  
Waltham: 781-487-3200  
Worcester: 781-487-3200

**MICHIGAN**

Detroit: 1-888-237-3922  
Livonia: 1-888-237-3922  
East Lansing: 1-866-366-7050  
Grand Rapids: 1-866-366-7050  
Kalamazoo: 1-866-366-7050  
Troy: 1-888-237-3922

**MINNESOTA**

Minneapolis: 651-287-9950  
St. Paul: 651-287-9950  
Twin Cities: 651-287-9950

**MISSISSIPPI**

Biloxi: 504-849-6600

**MISSOURI**

Kansas City: 913-660-9999  
St. Louis: 314-429-3311

**NEBRASKA**

Lincoln: 402-331-4123  
Omaha: 402-331-4123

**NEVADA**

Las Vegas: 702-214-3910  
Reno: 775-851-4333

**NEW HAMPSHIRE**

Nashua: 603-882-4900

**NEW JERSEY**

Cherry Hill: 732-767-1000  
Iselin: 732-767-1000  
Parsippany: 732-767-1000  
Princeton: 732-767-1000

**NEW MEXICO**

Albuquerque: 888-610-5939

**NEW YORK**

Albany: 518-452-6444  
Long Island: 646-695-5700  
New York City: 646-695-5700  
Rochester: 315-449-3290  
Syracuse: 315-449-3290

**NORTH CAROLINA**

Charlotte: 704-930-0998  
Fayetteville: 916-336-1000  
Greensboro: 336-299-5022  
Raleigh-Durham: 919-336-1000

**OHIO**

Akron: 1-888-235-1954  
Cincinnati: 888-610-5939  
Cleveland: 1-888-235-1954  
Columbus: 614-798-1000  
Dayton: 888-614-2103

**OKLAHOMA**

Oklahoma City: 888-752-6450  
Tulsa: 888-594-1053

**OREGON**

Beaverton: 888-690-1015  
Eugene: 888-690-1015  
Portland: 888-690-1015  
Salem: 888-690-1015

**PENNSYLVANIA**

Allentown: 570-602-2700  
Harrisburg: 717-791-0200  
King of Prussia: 610-270-8700  
Lancaster: 717-791-0200  
Philadelphia: 610-270-8700  
Pittsburgh: 866-580-1009  
Reading: 570-602-2700  
Wilkes-Barre/Scranton: 570-270-2700

**RHODE ISLAND**

Providence: 401-654-5252

**SOUTH CAROLINA**

Charleston: 843-714-2040  
Columbia: 803-935-0555  
Greenville: 864-569-0008

**SOUTH DAKOTA**

Sioux Falls: 888-785-2545

**TENNESSEE**

Chattanooga: 423-892-3085  
Knoxville: 865-692-0105  
Memphis: 901-375-1533  
Nashville: 615-251-6955

**TEXAS**

Austin: 888-360-9208  
Dallas: 888-356-1246  
El Paso: 915-772-2365  
Fort Worth: 817-737-8997  
Houston: 713-552-1414  
San Antonio: 888-377-4153

**UTAH**

Salt Lake City: 801-952-4300

**VIRGINIA**

Richmond: 804-320-4600  
Tysons Corner: 703-749-4030

**WASHINGTON**

Seattle: 206-701-0311  
Spokane: 509-328-8077

**WEST VIRGINIA**

Charleston/Huntington: 304-345-7590

**WISCONSIN**

Appleton: 920-967-6000  
Madison: 608-206-2904  
Milwaukee: 414-607-5600  
The Fox Cities: 920-967-6000  
Wausau: 715-203-1388

**CANADA**

Toronto, Canada: 416-649-3691

**EUROPE**

Albania - Tirana: 355 4 22 40 706  
 Belgium - Viaanderen: 32 0 3 830 74 40  
 Belgium - Brussels: 32 0 3 830 74 40  
 Bulgaria - Sofia: 359 2 4210040  
 Czech Republic - Praha: 420 296 348 816  
 England - London: 44 0 8700 844438  
 Germany - Berlin: 0800 258 258 0  
 Germany - Bielefeld: 0800 258 258 0  
 Germany - Braunschweig: 0800 258 258 0  
 Germany - Bremen: 0800 258 258 0  
 Germany - Dortmund: 0800 258 258 0  
 Germany - Düsseldorf: 0800 258 258 0  
 Germany - Frankfurt: 0800 258 258 0  
 Germany - Hamburg: 0800 258 258 0  
 Germany - Hannover: 0800 258 258 0  
 Germany - Kiel: 0800 258 258 0  
 Germany - Leipzig: 0800 258 258 0  
 Germany - Mainz: 0800 258 258 0  
 Germany - Mannheim: 0800 258 258 0  
 Germany - Munich: 0800 258 258 0  
 Germany - Nuremberg: 0800 258 258 0  
 Germany - Oldenburg: 0800 258 258 0  
 Germany - Stuttgart: 0800 258 258 0  
 Ireland - Galway: 353 1 889 8700  
 Ireland - Dublin: 353 1 889 8700  
 Latvia - Riga: 371 67847600  
 Romania - Bucharest: 004 0213 211568  
 Slovakia - Bratislava: 421 55 7201 151  
 Slovakia - Košice: 421 55 7201 151  
 Spain - Barcelona: 34 93 418 64 01  
 Spain - Madrid: 34 91 571 71 61  
 Switzerland - Zurich: 0800 002210  
 The Netherlands - Amsterdam: 31 0 800 024 5000  
 The Netherlands - Eindhoven: 31 0 40 237 7732  
 The Netherlands - Enslo: 31 046 457 11 70  
 The Netherlands - Rotterdam: 31 0800 024 5000  
 The Netherlands - Utrecht: 31 030 750 850  
 The Netherlands - Zwolle: 31 (0)800 024 5000

**MIDDLE EAST**

Bahrain - Manama: 973 17535393  
 Israel - Tel Aviv: 972 3 710 0777  
 Jordan - Amman: 00962 6 5672118  
 Kuwait - Kuwait City: 965-222-40190  
 Lebanon - Beirut Central District: 961 1 989808  
 Lebanon - Beirut Zalka: 961 1 989808  
 Oman - Muscat: 0096824483330  
 Qatar, Doha: 974 44465000  
 Saudi Arabia - Abha: 800 1210121  
 Saudi Arabia - Ahsa: 800 1210121  
 Saudi Arabia - Al Baha: 800 1210121  
 Saudi Arabia - Al-Jubail: 800 1210121  
 Saudi Arabia - Al-Khobar: 800 1210121  
 Saudi Arabia - Bisha: 800 1210121  
 Saudi Arabia - Buraidah: 800 1210121  
 Saudi Arabia - Hafer-al Baten: 800 1210121  
 Saudi Arabia - Hail: 800 1210121  
 Saudi Arabia - Jazan: 800 1210121  
 Saudi Arabia - Jeddah: 800 1210121  
 Saudi Arabia - Khamis Mushait: 800 1210121

Saudi Arabia - Madinah Munawarah 800 1210121  
 Saudi Arabia - Makkah: 800 1210121  
 Saudi Arabia - Najran: 966 7 522 544 4 ext:109  
 Saudi Arabia - Riyadh: 966 14496140  
 Saudi Arabia - Tabouk: 966 442 11111  
 Saudi Arabia - Taif: 966 273 76600  
 Syria - Aleppo City: 963-21-268 9602  
 Syria - Damascus: 963 11 2311 100  
 U.A.E. - Abu Dhabi: 971 2 6266667  
 U.A.E. - Dubai: 971 4 3962222  
 Yemen - Sana'a: 967 1 448573

**AFRICA**

Egypt - Alexandria: 203 543 0820  
 Egypt - Cairo (Dokki): 002 02 837 1836  
 Egypt - Cairo (Nasr City): 002 02 4024902  
 Egypt - Dakhla: 20 50 2239667  
 Egypt - Mansoura: 50 223 9667  
 Ethiopia - Addis Ababa: 251 115 50 2026  
 Kenya - Nairobi: 254 2 2246145  
 Libya - Tripoli: 218 91 3400870  
 Nigeria - Abuja: 234 8036484640  
 Nigeria - Festac: 23 480 2864 2518  
 Nigeria - Ikeja-Lagos: 234 8028642518  
 South Africa - Cape Town: 27 21 419 3213  
 Tanzania - Arusha: 255 27 250 7395  
 Tanzania - Dar es Salaam: 255 22 21 18299  
 Uganda - Kampala: 256 31 2263067  
 Zimbabwe - Harare: 263 4 252675  
 Zimbabwe - Bulawayo: 263 77958391

**LATIN AMERICA**

Brazil - São Paulo: 55 11 3521 1111  
 Chile - Santiago: 56 2 657 6300  
 Costa Rica - San Jose: 506 2231 1101  
 Ecuador - Guayaquil: 593 4 2308460  
 Ecuador - Quito: 593 222 2000  
 El Salvador - San Salvador: 503 245 0399  
 Guatemala - Guatemala City: 502 24134000  
 Honduras - Tegucigalpa: 504 239 3300  
 Mexico - Mexico City: 2881 8800  
 Nicaragua - Managua: 505 222 2767  
 Panama - Panama City: 507 366 6888  
 Peru - Arequipa: 51 54 604444  
 Peru - Lima: 511 619 2900

**ASIA PACIFIC**

Australia - Brisbane: 61 7 3835 2600  
 Australia - Melbourne: 61 3 9670 3366  
 Australia - Newcastle: 61 2 4969 0690  
 Australia - Perth: 61 8 9265 9600  
 Australia - Sydney: 61 2 8263 5900  
 Bangladesh - Chittagong: 880 31 657507  
 Bangladesh - Dhaka: 88 02 8619503  
 Bangladesh - Gulshan: 880 171 7734612  
 Cambodia - Phnom Penh: 855 23 214 000  
 Guam - Hagatna: 671 633 4811  
 India - Ambala: 91 9813170107  
 India - Bangalore: 91 080 25595380 86  
 India - Belgaum: 91 0831 421 6997  
 India - Bhavnagar: 91 0278 2520481  
 India - Delhi: 91 11 24361514

Malaysia - Johor Bahru: 607 3310641  
 Malaysia - Kota Kinabalu: 6088 257 023  
 Malaysia - Kuala Lumpur: 603 2694 6455  
 Malaysia - Kuantan: 609 5143498  
 Malaysia - Kuching: 6082 412 189  
 Malaysia - Penang: 604 226 3588  
 Malaysia - Petaling Jaya: 603 7955 1800  
 Pakistan - Karachi: 9221 35317689  
 Singapore - Singapore: 65 6822 8282  
 South Korea - Kangnam: 82 2 554 7230  
 South Korea - Seoul: 82 2 723 7230  
 Vietnam - Ho Chi Minh: 84 8 38423333



**New Horizons**<sup>®</sup>  
Computer Learning Centers



More Courses, More Flexibility, Scheduled More Often