

# Mountain King Chalet

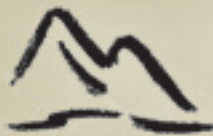
1080 square feet with loft

**Conestoga**  
LOG CABINS & HOMES

Crafted For Any Lifestyle



Spacious, Loft-Style Living  
That'll Welcome You Home.



**EAGLE ROCK**

• RESORT •

BLUE MOUNTAINS, PA

[www.eaglerockresort.com](http://www.eaglerockresort.com)

# Mountain King Chalet at



**EAGLE ROCK**

• RESORT •

BLUE MOUNTAINS, PA

[www.eaglerockresort.com](http://www.eaglerockresort.com)

As a vacation getaway or a weekend home in the woods, the Mountain King Chalet from Conestoga Log Cabins & Homes is an exceptional value in loft-style living. The Mountain King is a versatile log cabin highlighted by a great room, two spacious first-floor bedrooms, a charming loft and a covered front and side porch.

The Mountain King Chalet is built for rugged durability and easy maintenance with features like kiln-dried Everlast™ logs, strong, glue-laminated structural beams, a weather-tight interlocking corner system and a 45-year warranty metal roof system.

Conestoga Log Cabins are America's best-selling log cabins under 2,000 sq. ft. Fulfill your log cabin dream: The Mountain King Chalet at Eagle Rock Resort.



A 350 sq. ft. loft provides ample living and storage area and plenty of room for two full-sized beds

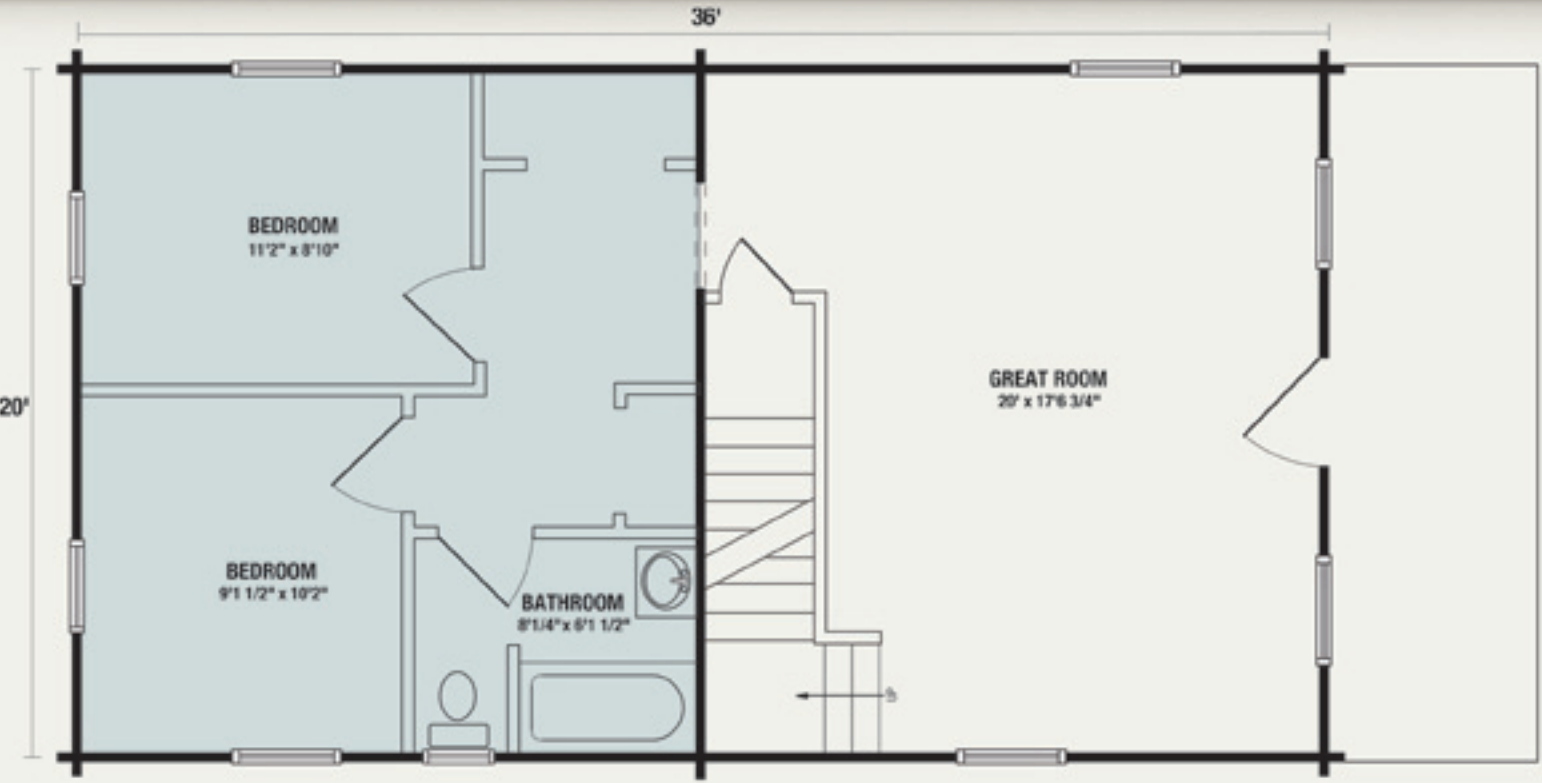


## Imagine yourself in the comfort of your own log cabin...



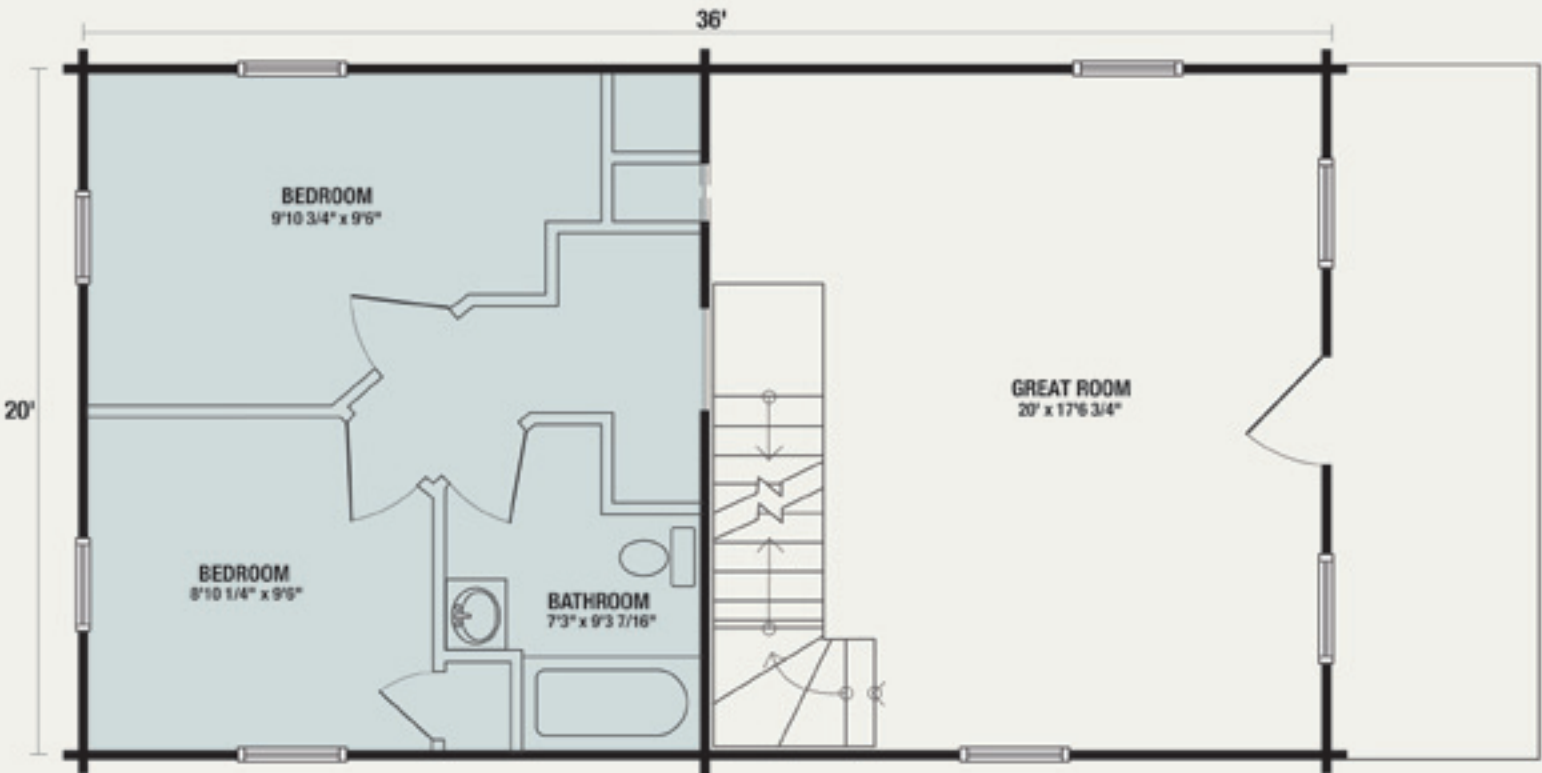
## surrounded by the beauty of Eagle Rock Resort.

# Mountain King Chalet Floor Plans



Mountain King Chalet with "Grand Haven" floor plan and loft - accommodates full basement

Bathroom fixtures are not included with the kit. Shaded area covered by loft.



Mountain King Chalet with "Lincoln" floor plan, center hall and loft

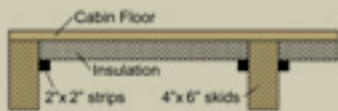
Bathroom fixtures are not included with the kit. Shaded area covered by loft.

# Options – Outfit Your Mountain King Chalet To Your Needs.

**Porch.** One of the most cost-effective ways to add living space to your cabin is to increase the size of the covered porch. The standard front porch is 6' deep by 20' wide. Front porches can be expanded to 8' or 10' or you can add a covered side porch in depths of 6', 8' or 10'. If you are considering adding porch area, budget \$20/sq. ft. of added space. (These numbers are for budget building purposes and do not include additional access doors, foundation materials, other materials or engineering services.) Call your Conestoga Project Consultant for details, engineering requirements and pricing.



**Insulation Kit.** The Mountain King offers a number of insulation options to meet even the most demanding application. The basic option kit includes 1-1/2" foam board insulation installed in the roof and floor (see inset). Insulation packages for demanding environments include using an R-38 insulation package in the roof. Call your Conestoga Project Consultant for details and pricing.



**Log Profile.** Our cabins are built with the Everlast™ Log - a stronger, more stable glue-laminated log with many advantages over conventional logs. The Everlast™ Log resists warping, twisting, checking, shrinkage and settling common to conventional logs. The Everlast™ Log can be used in unbroken lengths up to 28' eliminating butt joints common with conventional log construction. The Everlast™ Log is built of timber species which present superior working characteristics for cutting, drilling, nailing and staining.



Our Standard Everlast™ Log profile is the H-Log, which is flat on both exterior and interior faces. We offer an optional D-Log with a rounded exterior face and a flat interior face.

**Roof System.** Our standard roof system is designed to handle 50-lb. snow loads and 80-mph wind loads. If your local building codes require greater load capacity, our cabins can be engineered to meet the most demanding codes and standards.

Conestoga Log Cabins & Homes feature high quality steel roofs. All our roofs come with a 45-year warranty, zinc pretreatment, epoxy primer and are available in a number of colors (see inset below).



**Windows.** Conestoga features no maintenance, insulated Low E/Argon vinyl windows in our cabins. Window options include increasing window sizes. Please consult with your Conestoga Project Consultant to choose the windows that are best for your cabin.



**The Mountain King Chalet is factory-packaged as a pre-cut, pre-drilled kit that includes:**

- Everlast™ log walls in standard H or optional D profiles
- Interior stud walls with log siding
- 2" x 6" tongue-and-groove Southern Yellow Pine flooring
- 9 insulated windows
- 1 octagonal window
- 2" x 6" roof boards
- Steel exterior door and solid wood interior doors
- All window and door trim, inside and out
- Electrical package, including smoke detectors and lights
- Metal roof (see options for color choices) with 45-year warranty
- Loft and porch materials, including staircase and railings
- Hardware, spikes, nails and log gaskets

Contact Conestoga Log Cabins & Homes to learn more about America's best-selling log cabins under 2,000 square feet.

Please contact us today at  
**800-914-4606**  
[www.conestogalogcabins.com](http://www.conestogalogcabins.com)

Disclaimer: Prices and materials are subject to change without notice. Photos and floor plans are for illustration purposes only and may include non-standard items. Plans are subject to change based on changes and interpretations of the International Building Code (IBC) as well as state and local building codes and statutes.

246 North Lincoln Avenue Lebanon, PA 17046 800-914-4606 Fax: 717-306-4495  
ConestogaLogCabins.com © 2009 Peak Ventures, Inc. All rights reserved.

**Conestoga**  
LOG CABINS & HOMES  
Crafted For Any Lifestyle